

580 HILLSDALE STREET
WYANDOTTE, MICHIGAN

INDUSTRIAL FOR SALE
47,250 Square Feet Available

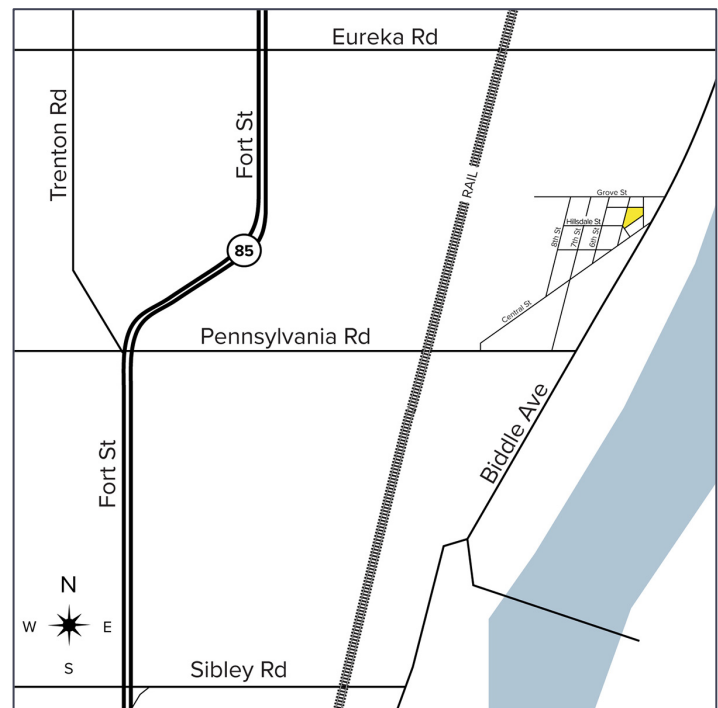


**SIGNATURE
ASSOCIATES**
KNOW SIGNATURE | KNOW RESULTS



PROPERTY FEATURES

- 47,250 square feet available
- 4,600 square feet office
- Clear heights of 20', 24' and 35'
- (6) 12' x 14', 14' x 14' grade level doors
- (1) exterior loading dock
- (13) cranes – (4) 25-ton, (1) 10-ton, (1) 5-ton, (2) 2-ton, (5) 0.5-1-ton jib cranes
- 3600 amps, 3-phase heavy power
- Fenced in, paved storage yard
- (28) parking spaces with vacated Albion Street available for additional parking
- Located on 2.550 acres
- Sale Price: \$3,213,000 (\$68.00/sq. ft.)



For more information, please contact:

BRAD VIERGEVER
(248) 799 3146
bviergever@signatureassociates.com

ALEX TIMMIS
(248) 359 0623
atimmis@signatureassociates.com

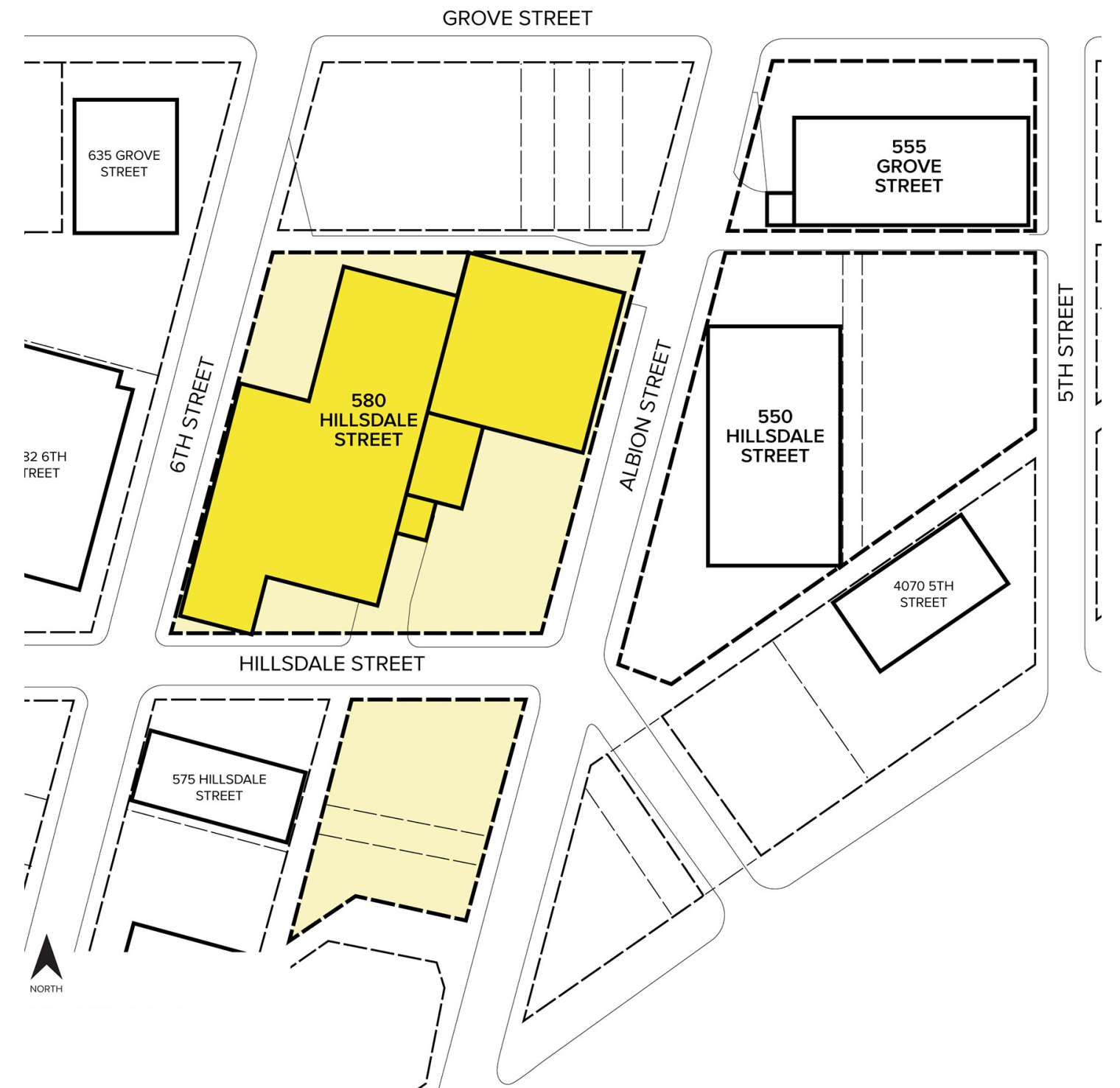
SIGNATURE ASSOCIATES
One Towne Square, Suite 1200
Southfield, MI 48076
www.signatureassociates.com

580 Hillsdale Street – Wyandotte, Michigan

Industrial For Sale

47,250
Square Feet
AVAILABLE

Site Plan



For more information, please contact:

BRAD VIERGEVER
(248) 799 3146
bviergever@signatureassociates.com

ALEX TIMMIS
(248) 359 0623
atimmis@signatureassociates.com

SIGNATURE ASSOCIATES
One Towne Square, Suite 1200
Southfield, MI 48076
www.signatureassociates.com

Information is subject to verification and no liability for errors or omissions is assumed. Price is subject to change and listing withdrawal.

580 Hillsdale Street – Wyandotte, Michigan

Industrial For Sale

47,250
Square Feet
AVAILABLE

Aerial



For more information, please contact:

BRAD VIERGEVER
(248) 799 3146
bviergever@signatureassociates.com

ALEX TIMMIS
(248) 359 0623
atimmis@signatureassociates.com

SIGNATURE ASSOCIATES
One Towne Square, Suite 1200
Southfield, MI 48076
www.signatureassociates.com

Information is subject to verification and no liability for errors or omissions is assumed. Price is subject to change and listing withdrawal.