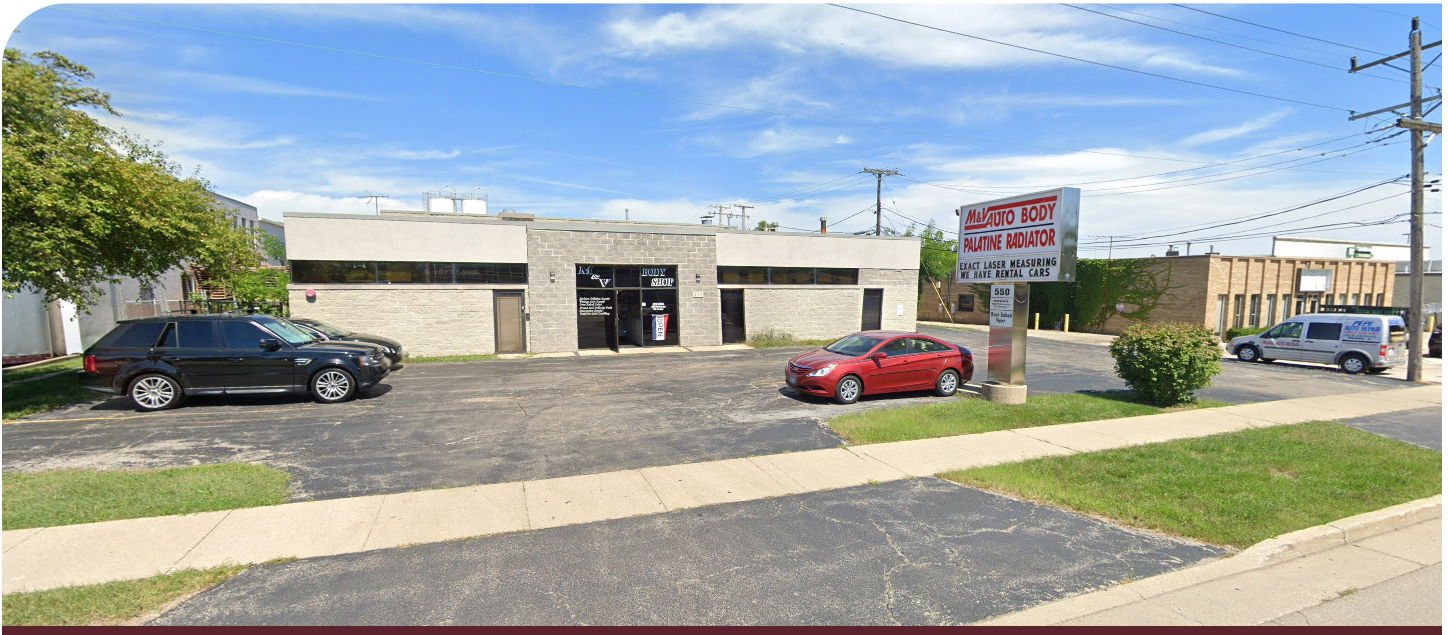


AVAILABLE FOR SALE
550 W. COLFAX STREET
PALATINE, IL 60067



BUILDING SPECIFICATIONS:

BUILDING SIZE:	10,448 SF with yard space
OFFICE:	±2,000 SF
SITE SIZE:	0.55 acres
CLEAR HEIGHT:	18'
LOADING:	2 drive-in doors (12' x 14' & 12' x 10')
YEAR BUILT:	1985
HVAC:	Heated floors
PARKING:	15 car parking spaces
POWER:	660 volt, 3-phase
TAXES:	\$6.22 PSF (2023) 02-15-102-074 (back) 02-15-102-073 (front)
SALE PRICE:	Subject to Offer
COMMENTS:	› Outside storage › Ideal uses include contractor, auto / truck repair and service



Todd Hendricks
Senior Vice President
thendricks@lee-associates.com
D 773.355.3025

Jeff Provenza
Principal
jprovenza@lee-associates.com
D 630.747.6350

All information furnished regarding property for sale, rental or financing is from sources deemed reliable, but no warranty or representation is made to the accuracy thereof and same is submitted to errors, omissions, change of price, rental or other conditions prior to sale, lease or financing or withdrawal without notice. No liability of any kind is to be imposed on the broker herein.

AVAILABLE FOR SALE
550 W. COLFAX STREET
PALATINE, IL 60067

LEE & ASSOCIATES
COMMERCIAL REAL ESTATE SERVICES



Todd Hendricks
Senior Vice President
thendricks@lee-associates.com
D 773.355.3025

Jeff Provenza
Principal
jprovenza@lee-associates.com
D 630.747.6350

All information furnished regarding property for sale, rental or financing is from sources deemed reliable, but no warranty or representation is made to the accuracy thereof and same is submitted to errors, omissions, change of price, rental or other conditions prior to sale, lease or financing or withdrawal without notice. No liability of any kind is to be imposed on the broker herein.