

FOR LEASE

290-294 Collins Street, Hartford, CT 06105

2,946± SF MEDICAL OFFICE SPACE AVAILABLE

\$13/SF NNN

MATTERPORT VIRTUAL WALKTHROUGH

HIGHLIGHTS

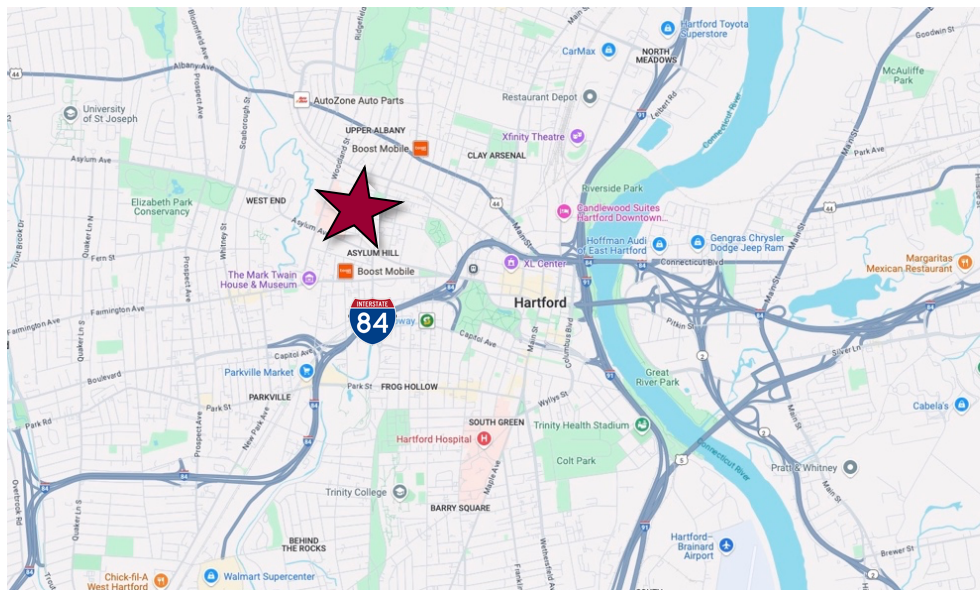
- 5,892± SF Building
- 2,956± SF Available
 - 2nd Floor Space
- 2 Story Building
- Pylon Signage
- Ample Parking
- 2 Blocks from St. Francis Hospital
- I-84, Exit 48
- Many Area Amenities

CONTACT

Thomas Wilkes

(860) 761-6018

twilkes@orlcommercial.com



WWW.ORLCOMMERCIAL.COM



2430 Silas Deane Highway, Rocky Hill, CT 06067 | ☎ (860) 721-0033 | 📠 (860) 721-7882

2 Summit Place, Branford, CT 06450 | ☎ (203) 488-1555 | 📠 (203) 315-4046

Broker of Record: Jay Morris | 860.721.0033 | jmoris@orlcommercial.com | License: REB.0755257

While the information contained herein has been obtained from sources deemed to be reliable, no guarantee is made as to its accuracy.



FOR LEASE

\$13/SF NNN

290 Collins Street, Hartford, CT 06105

2,946± SF MEDICAL OFFICE SPACE

MATTERPORT VIRTUAL WALKTHROUGH

BUILDING INFORMATION:

GROSS BLD. AREA 5,892± SF

AVAILABLE AREA 2,946± SF

NUMBER OF FLOORS 2

ROOF TYPE Flat, Tar & Gravel

YEAR BUILT 1970

MECHANICAL EQUIPMENT:

AIR CONDITIONING Central Air

HEAT Gas, Hot Water

SPRINKLERED TBD

ELECTRIC TBD

ELEVATOR(S) TBD

SITE INFORMATION:

SITE AREA 0.40± Acres

ZONING MX-1

PARKING Ample

SIGNAGE Pylon

VISIBILITY Excellent

FRONTAGE 103' on Collins St

HWY ACCESS I-84, Exit 48

TRAFFIC COUNT 5,700± ADT

TAXES:

ASSESSMENT \$1,164,450

MILL RATE 32.02

TAXES \$44,843

UTILITIES:

SEWER City

WATER City

GAS Yes

EXPENSES:

RE TAXES ☒ Tenant ☐ Landlord

UTILITIES ☒ Tenant ☐ Landlord

INSURANCE ☒ Tenant ☐ Landlord

MAINTENANCE ☒ Tenant ☐ Landlord

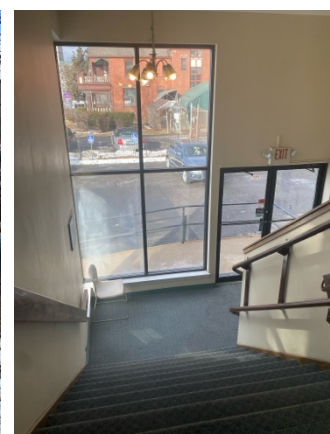
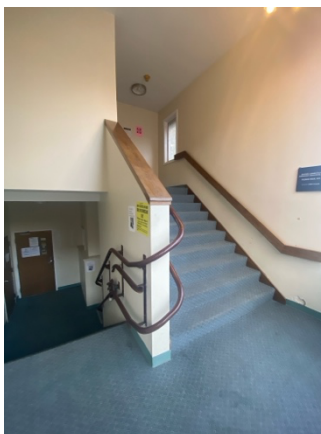
JANITORIAL ☒ Tenant ☐ Landlord

CONTACT

Thomas Wilkes

(860) 761-6018

twilkes@orlcommercial.com



WWW.ORLCOMMERCIAL.COM



2430 Silas Deane Highway, Rocky Hill, CT 06067 | ☎ (860) 721-0033 | 📠 (860) 721-7882

2 Summit Place, Branford, CT 06450 | ☎ (203) 488-1555 | 📠 (203) 315-4046

Broker of Record: Jay Morris | 860.721.0033 | jmorris@orlcommercial.com | License: REB.0755257

While the information contained herein has been obtained from sources deemed to be reliable, no guarantee is made as to its accuracy.