

LEASING NOW



9700 VILLAGE CENTER

GRANITE BAY
CA 95746

OFFICE & EXECUTIVE SUITES
BEAUTIFUL VIEWS IN QUIET GRANITE BAY

Suite 210- 1,609 RSF - Build to Suit



Jayna DeSoiza | 916.638.3890 | jayna@kcmre.com
CA DRE #01941191

Brian Rabe | 916.601.0578 | brabe@kcmre.com
CA DRE #01743359

9700 VILLAGE CENTER

EXECUTIVE OFFICE SUITES | FOR LEASE

PROPERTY PHOTOS



Highlights

- Medium and large private offices. Views available.
- Large glass windows
- Open conference room
- Large kitchenette/break room
- Quiet upscale neighborhood
- Large outdoor area overlooking private pond
- Five minutes to Roseville or Folsom
- Ten minutes to HWY 80

9700 VILLAGE CENTER

SUITE PLAN

COMING SOON

EXECUTIVE OFFICE SUITES | FOR LEASE



LEASE RATE

Starting at
\$850/month

Fiber high speed internet \$55/month.



231

232

233

236

235

234

KCM
COMMERCIAL
PROPERTY MANAGEMENT

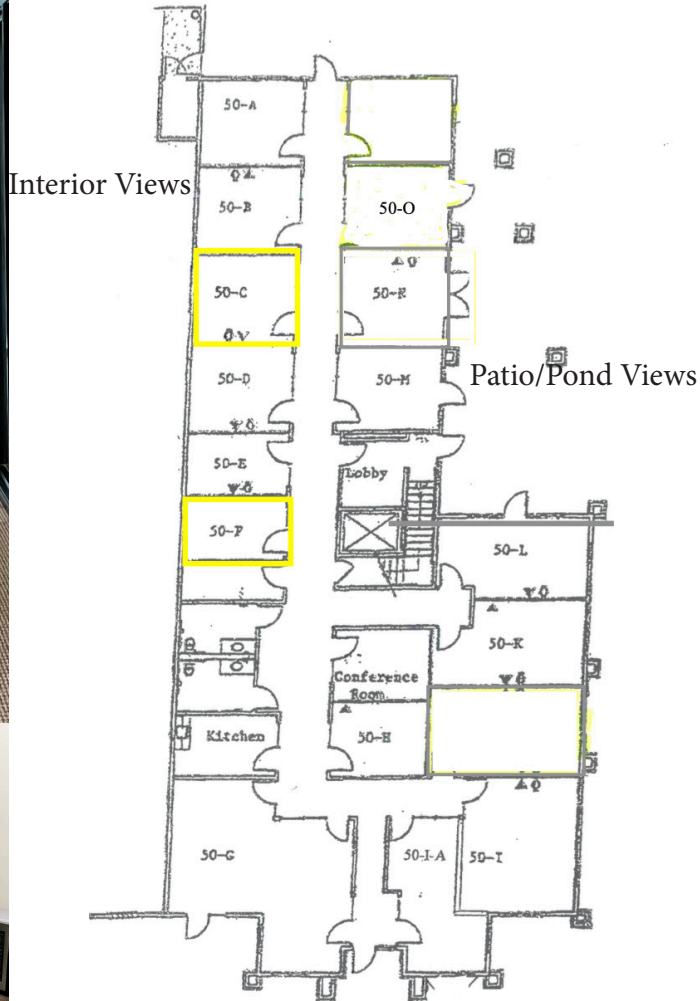
- Large private offices with windows
- Open lounge/conference area

- Large kitchenette/break room
- Brand new modern space plan

9700 VILLAGE CENTER

EXECUTIVE OFFICE SUITES | FOR LEASE

EXECUTIVE SUITE PLAN



LEASE RATE

**Starting at
\$775+/mo**

Executive Suite Details & Highlights

- Move in ready executive offices
- Large common area conference room
- Large common area kitchenette / break room

9700 VILLAGE CENTER

EXECUTIVE OFFICE SUITES | FOR LEASE

SUITE 210 PLAN



LEASE RATE

Starting at
\$2.10/mo

KCM

Fiber High Speed Internet \$55/mo

Suite 210 Details & Highlights

- 1,459 USF / 1,609 RSF
- Landlord TI build to suit - Inquire about details
- Pond Views • Private Restroom

9700 VILLAGE CENTER LOCATION AERIAL

OFFICE SPACE | FOR LEASE

