



FOR SALE



15401 SE MILL PLAIN BLVD

Office, Commercial, or Industrial Lot w/ Building On-Site

30,928 SF / 0.71 AC Lot w/ 900 SF Building

Sale Price: \$618,500 (\$20.00/SF)

15401 SE Mill Plain Blvd, Vancouver, WA 98684

- Approximately 30,928 SF Lot
- Along dynamic Mill Plain Corridor
- Owner-user, Development, or Redevelopment opportunity

CHARLIE KLEIER, CCIM

Senior Vice President | Licensed in OR & WA

360-921-2099 | charlie.kleier@capacitycommercial.com



PROPERTY SUMMARY

FOR SALE



PROPERTY DETAILS

Address	15401 SE Mill Plain Blvd, Vancouver, WA 98684
Lot Size	0.71 Acres / 30,928 SF
Building Size	900 SF
Zoning	OCI
Use Type	Office, Commercial, Industrial
Year Built / Renov	1940 / 2002
Sale Price	\$618,500 (\$20 / SF)

Location Features

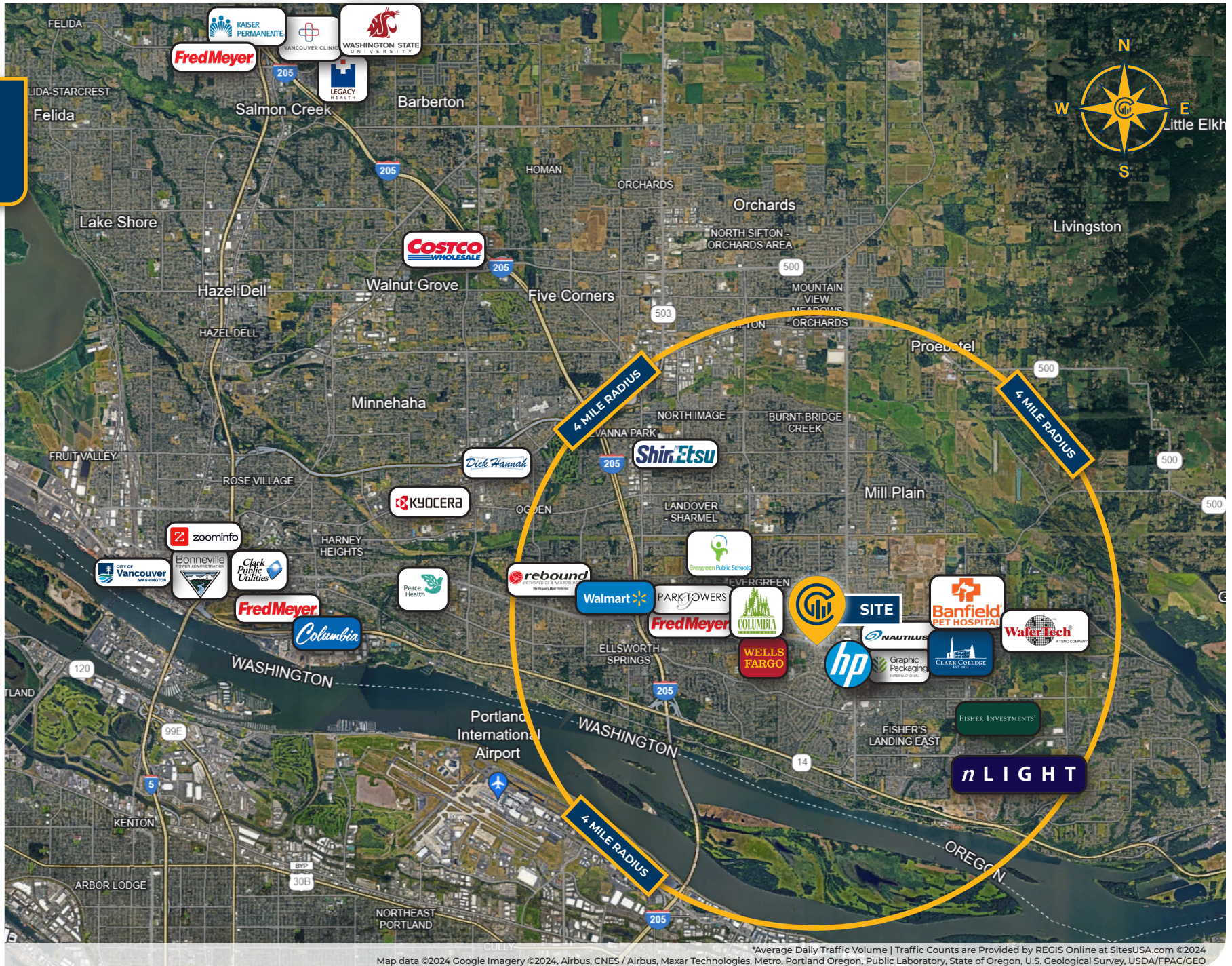
- Frontage on Mill Plain Boulevard
- In close proximity to I-205 and Hwy-14
- 8 Miles to Portland International Airport
- Minutes away from Clark County employers
- Surrounded by shopping, services, and transit

Nearby Highlights

- Banfield Pet Hospital
- Black Rock Coffee
- Cactus Ya Ya
- Chick-fil-A
- Columbia Crossing Shopping Center
- Columbia Tech Center
- Costco Wholesale
- Fisher Investments
- Gretchen Fraser Park
- Jorge's Margarita Factory
- New Seasons
- Peace Health
- Peet's Coffee
- Regal Cascade
- Safeway
- Walmart

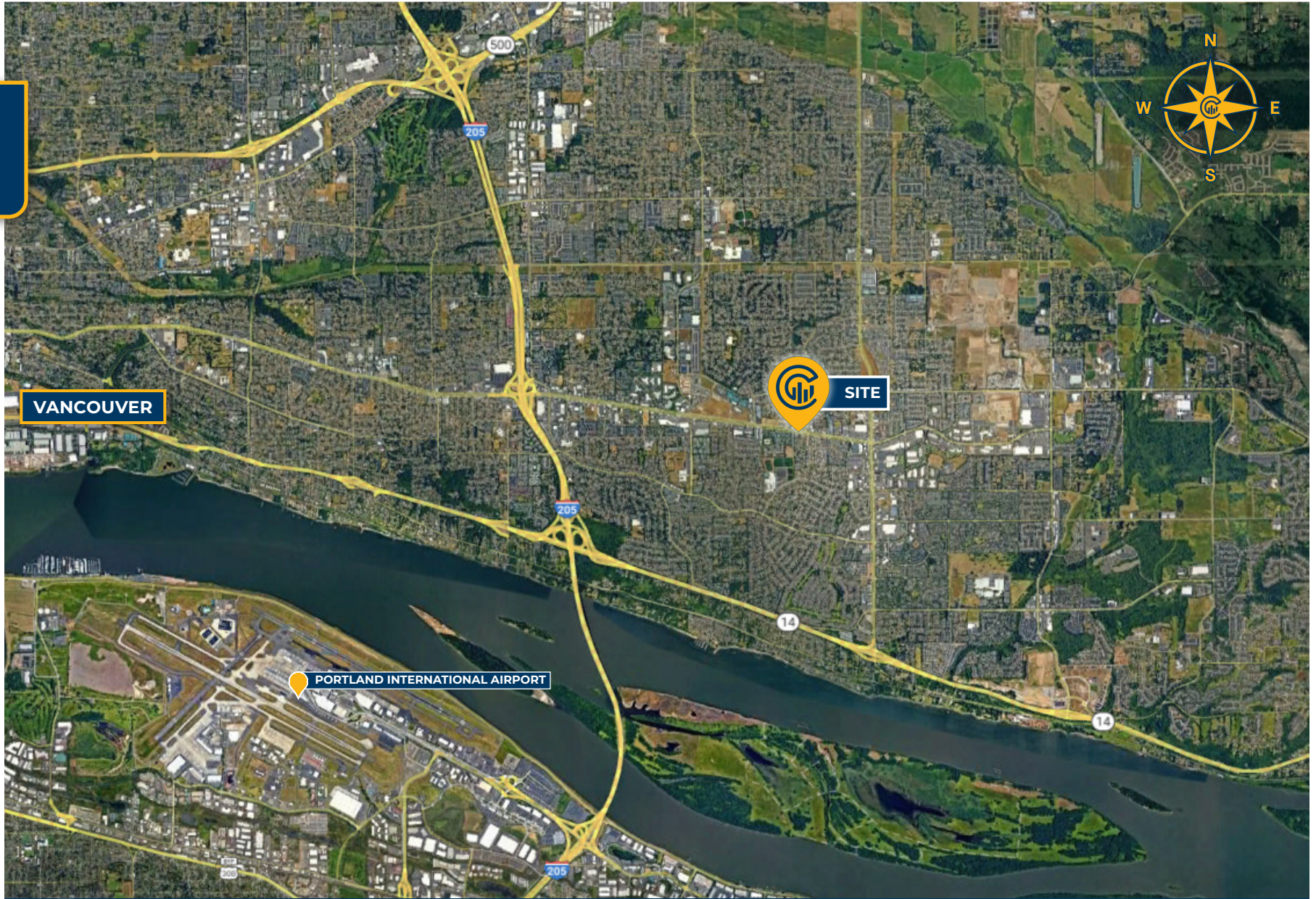


TOP EMPLOYERS MAP





LOCAL AERIAL MAP



VANCOUVER

 SITE

PORTLAND INTERNATIONAL AIRPORT



CHARLIE KLEIER, CCIM
Senior Vice President | Licensed in OR & WA
360-921-2099
charlie.kleier@capacitycommercial.com