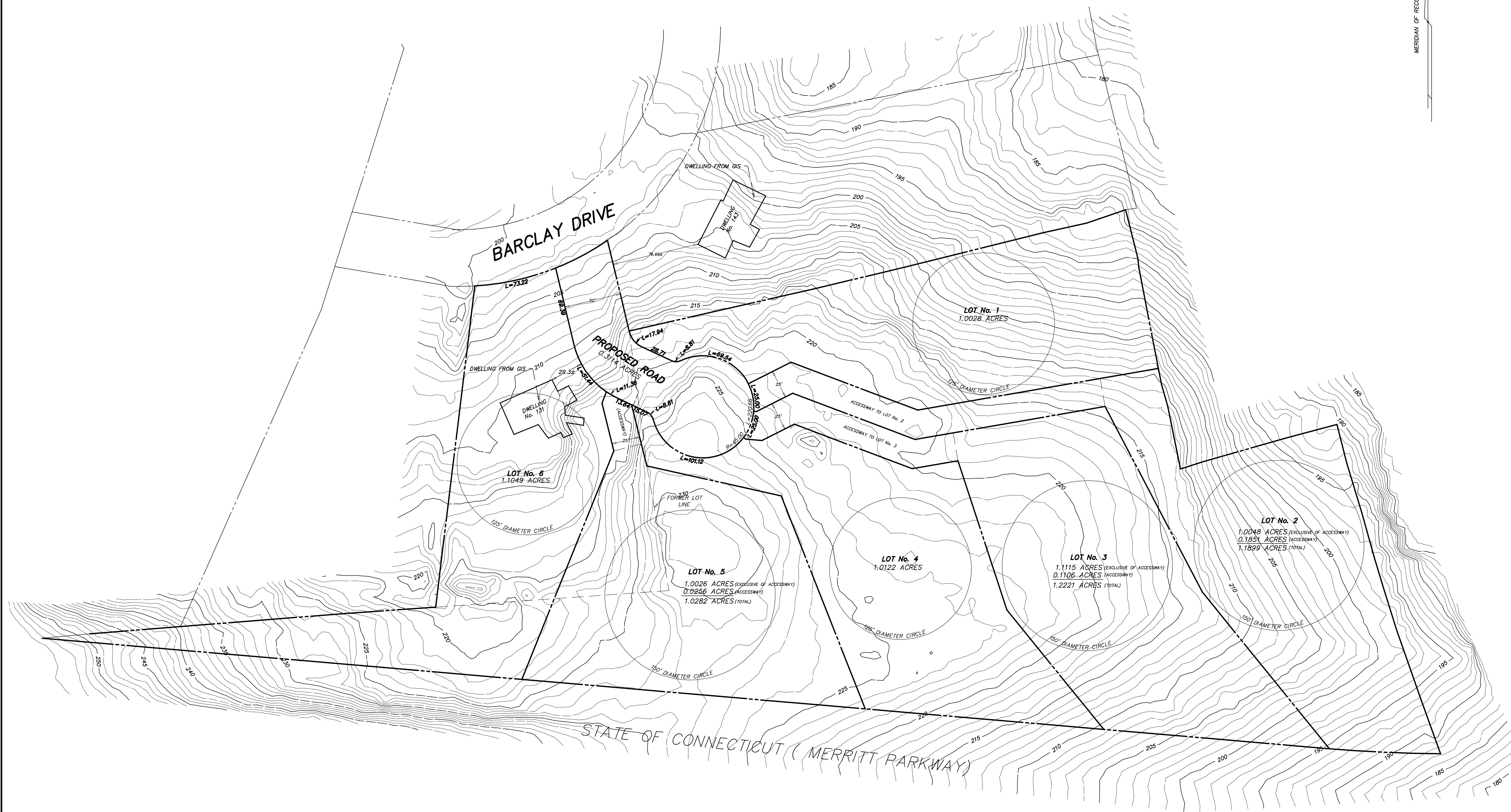


MERIDIAN OF RECORD



LOT AREA = 6.8714 ACRES (TOTAL)
D'ANDREA SURVEYING & ENGINEERING, P.C.

EDWIN W. RHODES, III CT LS No. 70436 SURVEYOR
RIVERSIDE, CONNECTICUT SEPTEMBER 28, 2022

CONTOUR INTERVAL = ONE FOOT
1 INCH = 40 FEET
SCALE
40 0 40
IN FEET

SKETCH # 2
DEPICTING
PROPOSED SUBDIVISION
AT
BARCLAY DRIVE
IN
STAMFORD, CONNECTICUT