



CALIBER

COMPANY



LAND FOR SALE

6580 NE 14th Street, Des Moines, IA 50313

MATT SHAW
515.360.2247
matt.shaw@calibercompany.com
Licensed in IA



CALIBER
COMPANY

6580 NE 14th Street, Des Moines, IA

FOR SALE



PROPERTY DESCRIPTION

Redevelopment opportunity located on NE 14th. This 1.14 acre parcel has a number of development opportunities with great visibility and 18,000 vehicles per day. Just 2 miles from I 80/35 access and 1 mile south of Ankeny. This property is located in Polk County jurisdiction and zoned General Commercial District. Located at the corner of NE 14th and NE 66th just east of Woodland Golf Course. The bar and grill is currently operating.



CALIBER

COMPANY

OFFERING SUMMARY

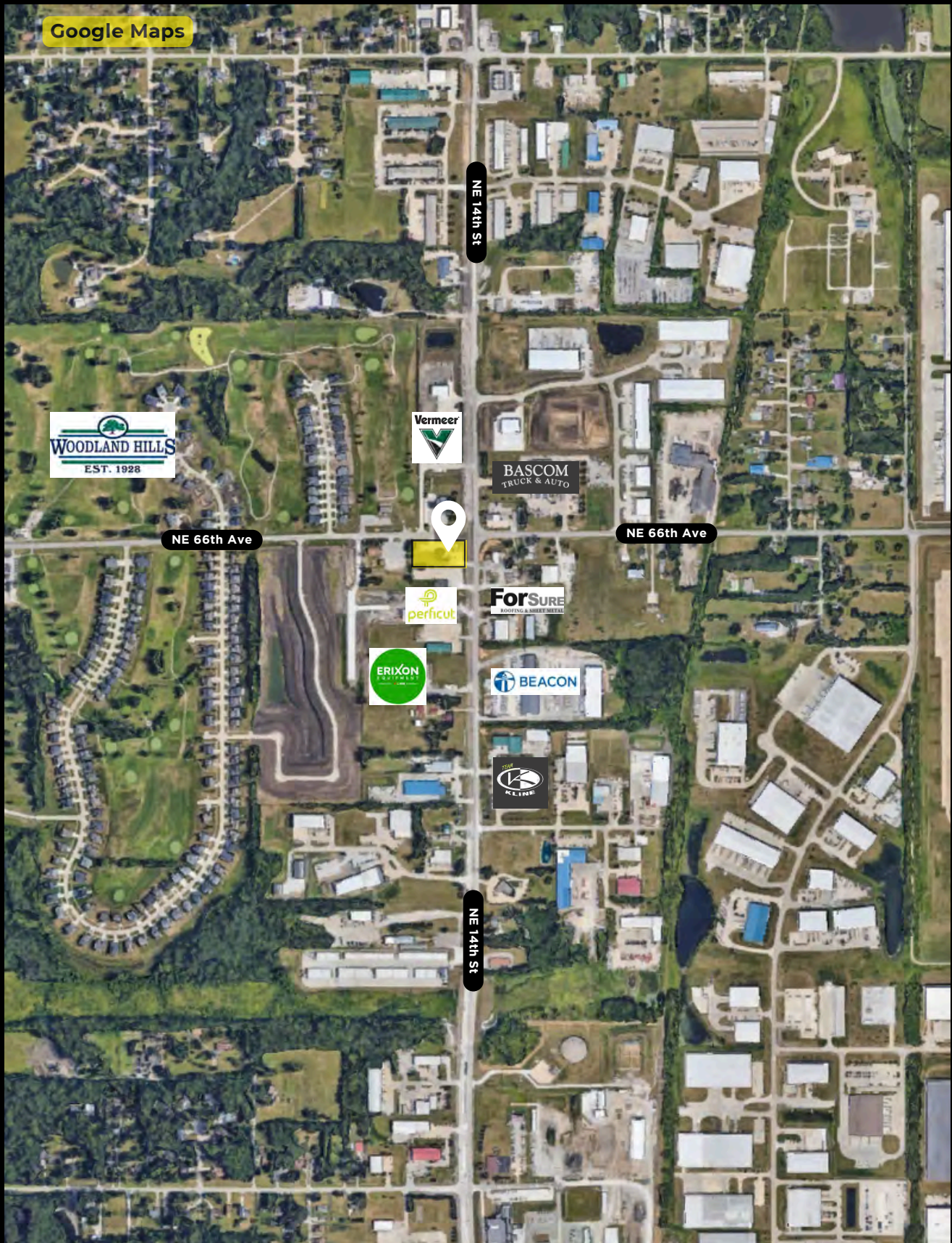
Price:	\$900,000
Zoning:	General Commercial District
VPD:	18,000
Lot Size:	1.14 Acres





CALIBER

COMPANY





CALIBER

COMPANY





CALIBER
COMPANY

LISTING AGENTS



COMMERCIAL AGENT

MATT SHAW

matt.shaw@calibercompany.com

(515) 360-2247

