

7108 N. Nebraska Ave., Tampa, FL 33604



FREE STANDING BUILDING

CLAREMEDICA

Primary Care Practice

Sonali Judd, MD

Dawn Crowley, APRN

PARKING IN REAR

7108

- ❖ 4,336 SF Free Standing 1-story Building
- ❖ “Plug & Play” Medical Clinic
- ❖ Nice medical clinic buildout – can accommodate two separate Medical practices
- ❖ Five offices, six exam rooms, Reception areas, X-Ray, Kitchen/Break Room
- ❖ Built in 1985 - Renovated in 2024
- ❖ Concrete Block Stucco construction
- ❖ 63’ Linear Feet of Frontage on Nebraska Ave
- ❖ Lot size: .45 acres
- ❖ 24 Parking Spaces, 1 HC - 5.5/1000 Parking Ratio
- ❖ Zoning: SH-CI Seminole Heights Comm. Intensive – City of Tampa
- ❖ Future Land Use: CC-35 Community Commercial-35
- ❖ Monument Sign on N. Nebraska Ave.
- ❖ Folio #: 161560-0100 PIN A-25-28-18-4E3-000001-00004.1
- ❖ Price Improvement - Now: \$1,084,000.00

[illegible]

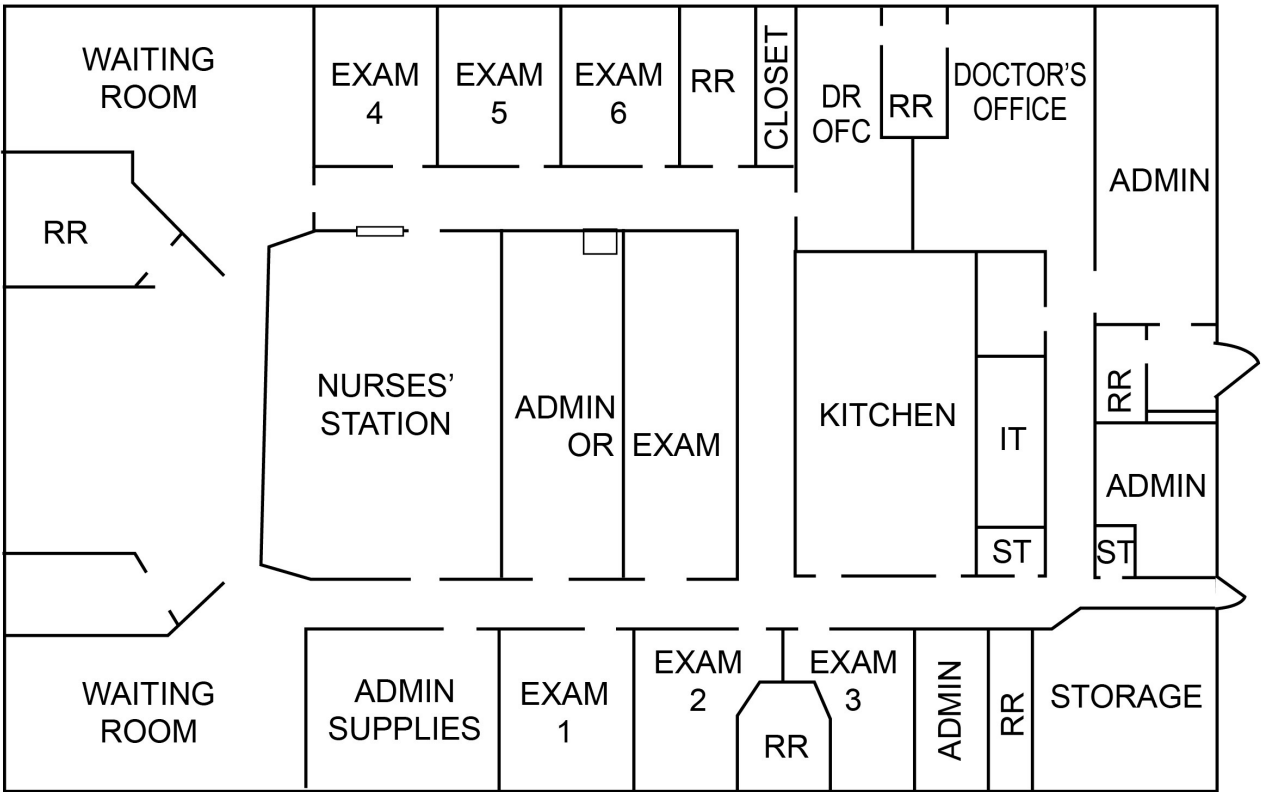
Elliott M. Ross, CCIM
O: 813.755.6700
C: 727.639.3800
elliottross@rossrealty.com

ROSS REALTY GROUP, INC.
Westshore Square
4600 W. Cypress St., Suite 525
Tampa, FL 33607

INTERIOR PHOTOS



FLOOR PLAN



Any information given herein is obtained from sources considered reliable. However, we are not responsible for misstatement of facts, errors, omissions, prior sale, withdrawal from market, modification of mortgage commitment, terms and considerations, or change in price without notice. The information supplied herein is for informational purposes only and shall not contain a warranty or assurance that said information is correct. Any person intending to rely upon the information supplied herein should verify said information independently.