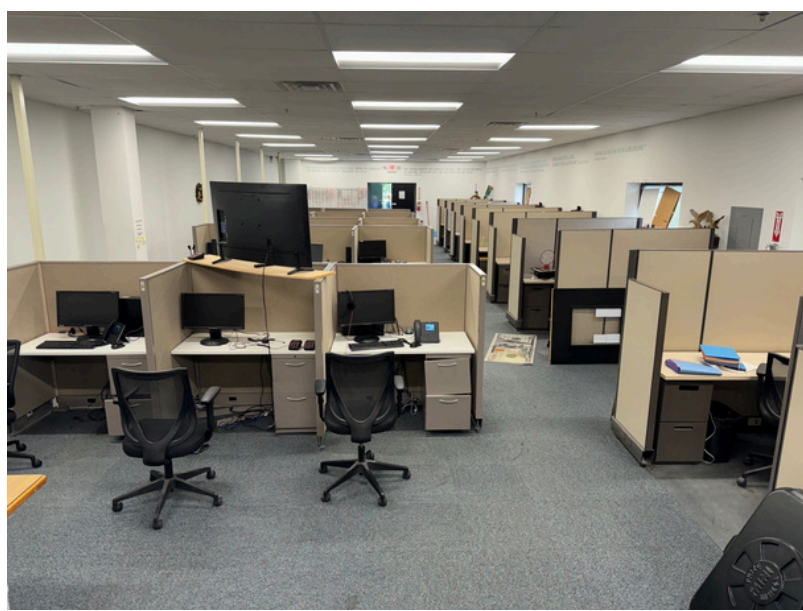


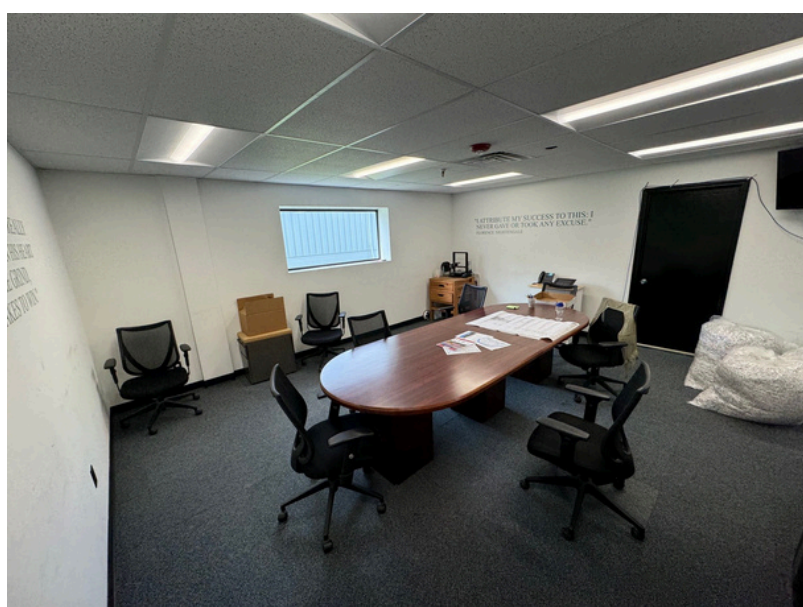
3,900 SF Office for Lease in Northeast Industrial District

1811 N. Topping Ave Kansas City, MO | \$15 PSF Full Service



\$15 PSF Full Service Minus Janitorial

- 26' x 150' Column Free Production Room with 9' Clear Height
- Conference Room
- Reception
- Break Room
- Private Office
- Bathrooms

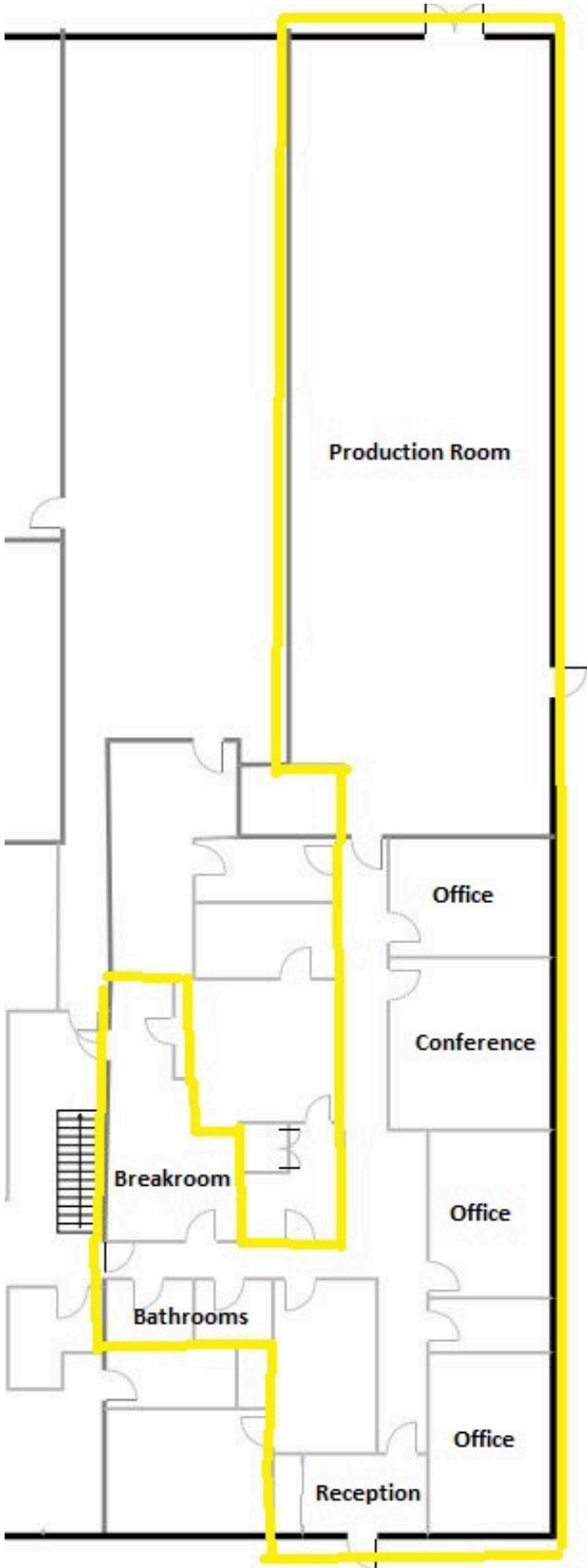


Josh Haith
Josh@Haith.com
O: (913) 888-3456 x 7
www.Haith.com



Jake LaFevers
Jake@Haith.com
O: (913) 888-3456
M: (816) 642-7287

3,900 SF Office for Lease in Northeast Industrial District
1811 N. Topping Ave Kansas City, MO

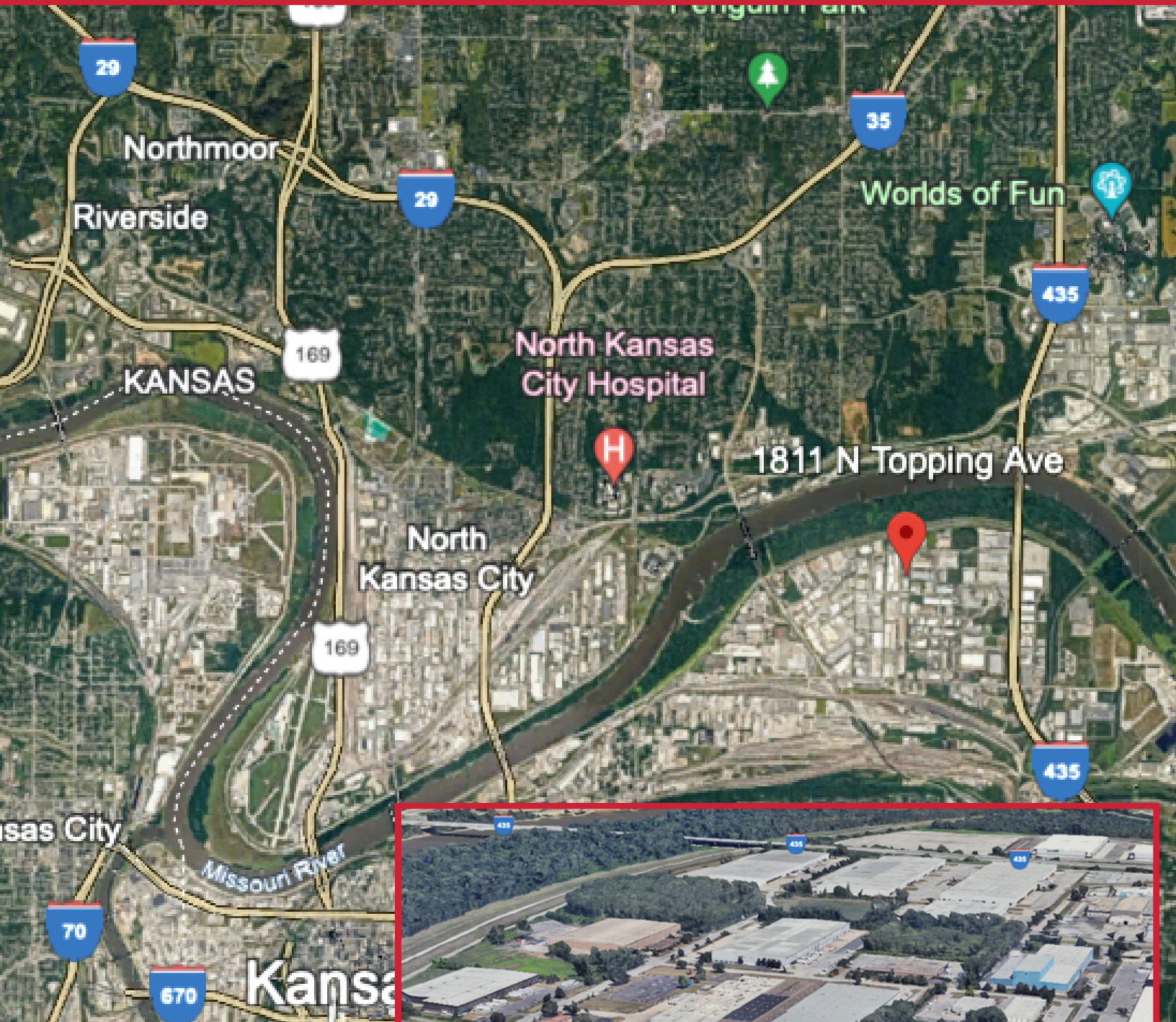


Josh Haith
Josh@Haith.com
O: (913) 888-3456 x 7
www.Haith.com



Jake LaFevers
Jake@Haith.com
O: (913) 888-3456
M: (816) 642-7287

3,900 SF Office for Lease in Northeast Industrial District 1811 N. Topping Ave Kansas City, MO



Josh Haith
Josh@Haith.com
O: (913) 888-3456 x 7
www.Haith.com



Jake LaFevers
Jake@Haith.com
O: (913) 888-3456
M: (816) 642-7287