

FOR LEASE

Raintree North Shopping Center

308 SW Greenwich Drive, Lee's Summit, MO 64082



- 1,512 +/- SF in Lot 6 outparcel (former nail salon)
- 1,244 +/- SF in Lot 4B outparcel (former 9Round)
- High Volume Price Chopper recently expanded to 75,000 SF.
- Two signalized intersections on 150 Hwy into shopping center.
- Walmart Super Center recently opened to the north.
- Lee's Summit's growth continues to accelerate in the areas surrounding Raintree North Shopping Center.



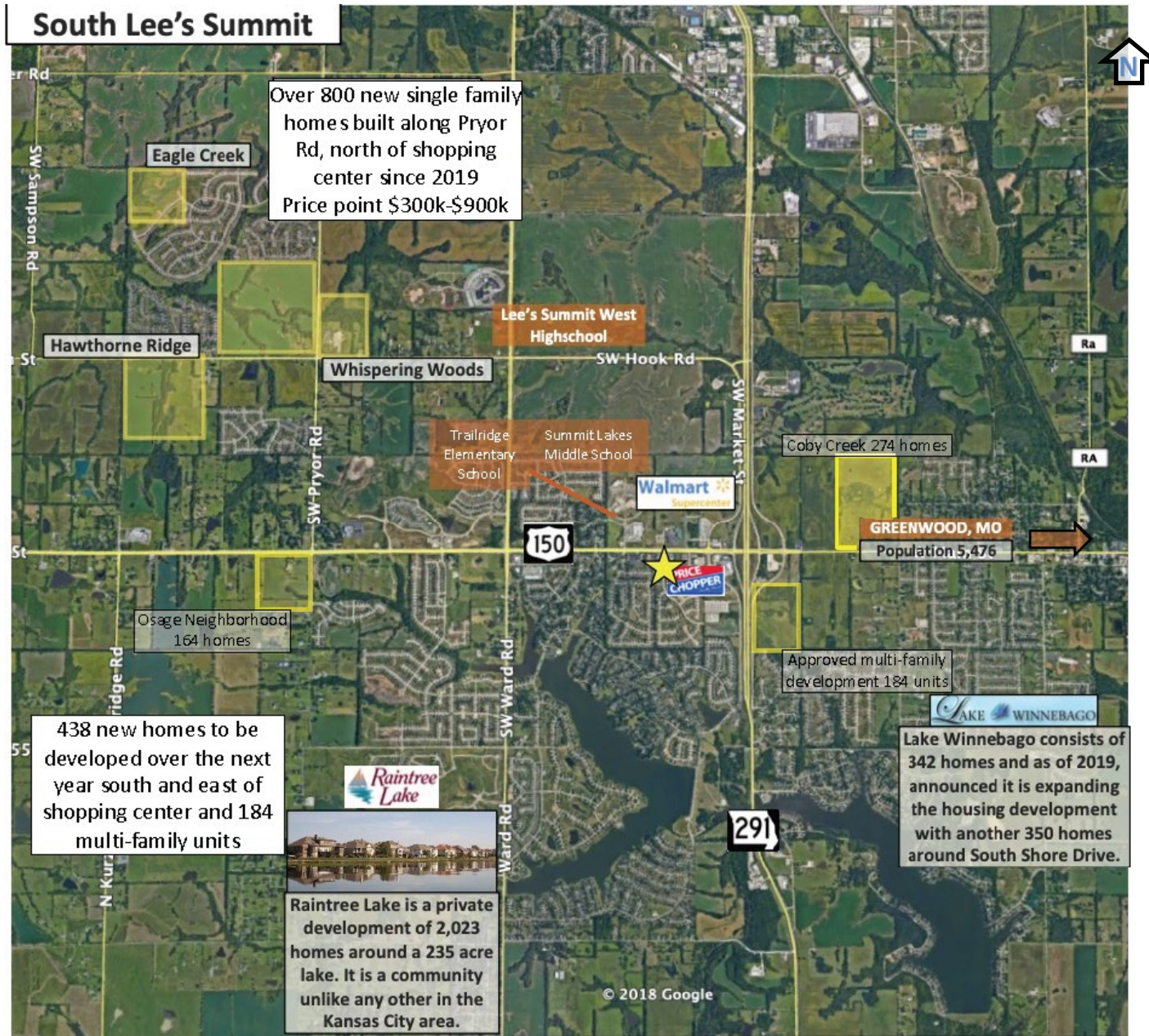
Adam Lyngar
adam@cadencekc.com
913.747.3326



FOR LEASE

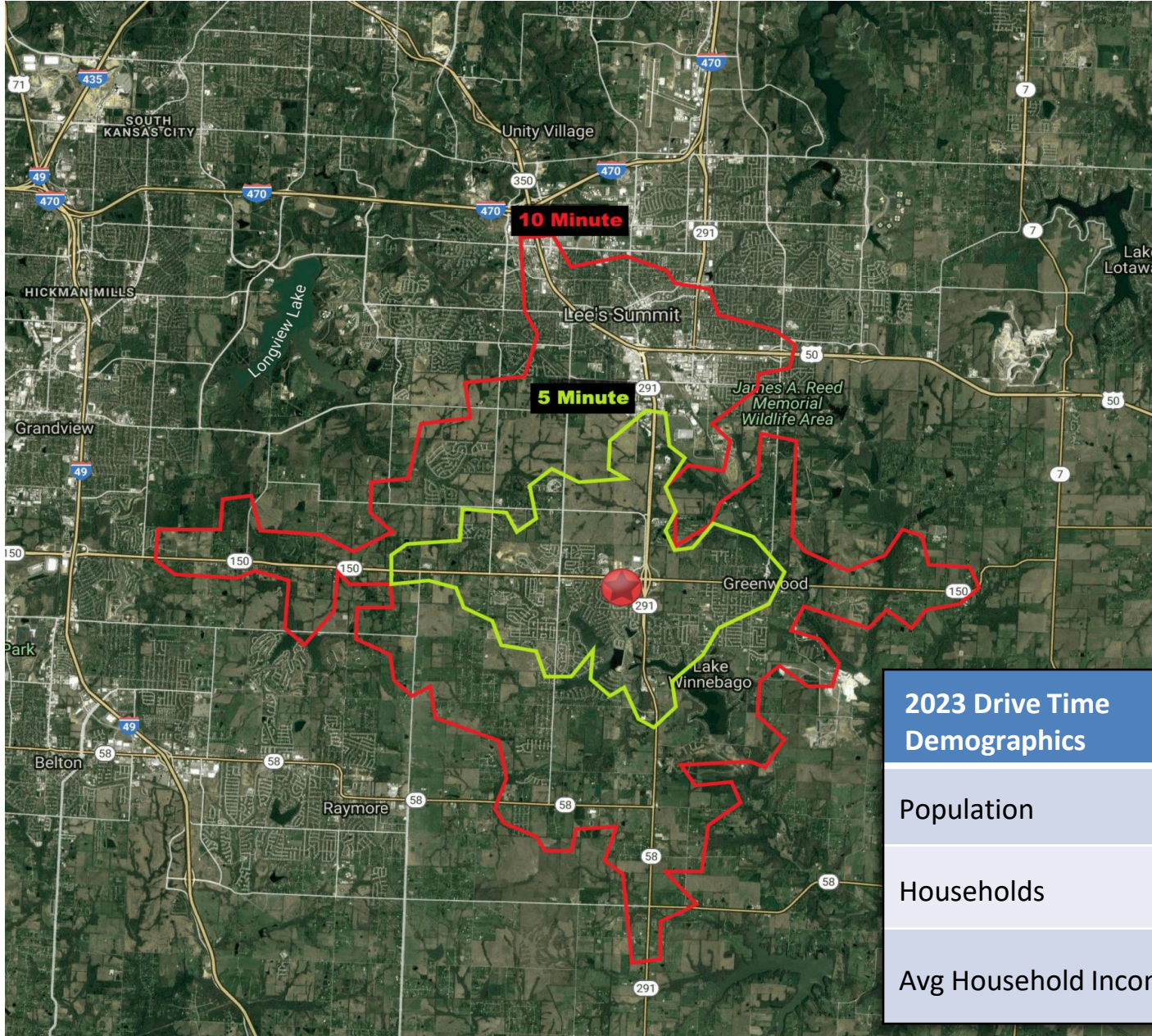
Raintree North Shopping Center

308 SW Greenwich Drive, Lee's Summit, MO 64082



FOR LEASE

Raintree North Shopping Center 308 SW Greenwich Drive, Lee's Summit, MO 64082



2023 Drive Time Demographics	5 minute	10 minute
Population	15,936	44,667
Households	5,918	18,068
Avg Household Income	\$110,001	\$94,421

FOR LEASE

Raintree North Shopping Center 308 SW Greenwich Drive, Lee's Summit, MO 64082

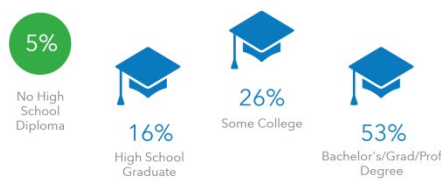
2020 Demographics

1 Mile

KEY FACTS



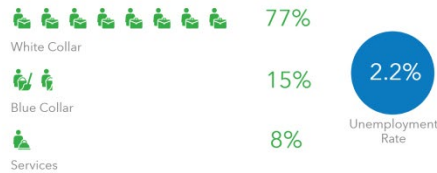
EDUCATION



BUSINESS



EMPLOYMENT



INCOME



Households By Income

The largest group: \$100,000 - \$149,999 (36.3%)
The smallest group: \$15,000 - \$24,999 (3.2%)

Indicator	Value	Difference
<\$15,000	3.6%	-1.9%
\$15,000 - \$24,999	3.2%	-4.6%
\$25,000 - \$34,999	4.3%	-4.0%
\$35,000 - \$49,999	6.9%	-5.3%
\$50,000 - \$74,999	12.7%	-8.2%
\$75,000 - \$99,999	14.5%	-0.6%
\$100,000 - \$149,999	36.3%	+19.3%
\$150,000 - \$199,999	10.8%	+1.8%
\$200,000+	7.6%	+3.5%

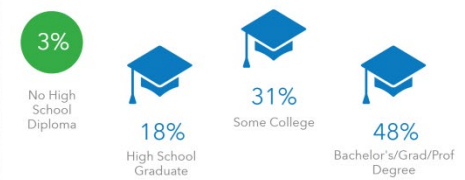
Bars show deviation from Cass County

3 Miles

KEY FACTS



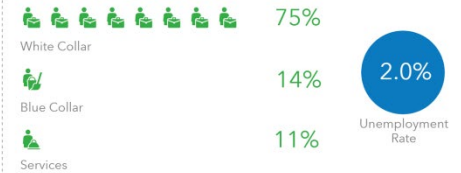
EDUCATION



BUSINESS



EMPLOYMENT



INCOME



Households By Income

The largest group: \$100,000 - \$149,999 (30.4%)
The smallest group: <\$15,000 (2.6%)

Indicator	Value	Difference
<\$15,000	2.6%	-2.9%
\$15,000 - \$24,999	3.4%	-4.4%
\$25,000 - \$34,999	5.0%	-3.3%
\$35,000 - \$49,999	7.0%	-5.2%
\$50,000 - \$74,999	14.1%	-6.8%
\$75,000 - \$99,999	14.8%	-0.3%
\$100,000 - \$149,999	30.4%	+13.4%
\$150,000 - \$199,999	12.9%	+3.9%
\$200,000+	9.9%	+5.8%

Bars show deviation from Cass County

Adam Lyngar
adam@cadencekc.com
913.747.3326

