



## STATE OF THE ART FEATURES

- Part of 8-Building Master-planned Industrial Park
- ±2,500 SF Finished Ground Floor Office Suites with ±2,500 SF of Finished Mezzanine
- 5 Dock High Loading Doors
- 1 Grade Level Loading Door
- 30' Clear Height
- 132' Fenced and Secured Concrete Truck Yard
- ESFR Fire Sprinkler System (K25 heads)
- 800-Amp, 277/480V, 3P, 4W House Panel with 1,200-Amp UGPS
- 4-ply Built-Up Roof with 15-yr NDL Warranty
- 2.5% Skylights
- White Scrim Insulation
- 55 Auto Parking Spaces
- Zoned MIP (Manufacturing Industrial Park)
- Close Proximity to Ontario International Airport
- Great Access to I-10, Hwy 60, Hwy 71, and I-15 Freeways

# OAKMONT MISSION RAMONA BUSINESS PARK

**BUILDING 3**  
±36,886 SF

**FOR LEASE OR SALE**

*For More Information, please contact:*

**MARK KEGANS, SIOR**  
909.974.4070  
mark.kegans@nrmk.com  
CA RE Lic #00866145

**RANDY LOCKHART**  
909.974.4067  
randy.lockhart@nrmk.com  
CA RE Lic #00974981

**RON WASHLE, SIOR**  
909.974.4071  
ron.washle@nrmk.com  
CA RE Lic #00978222

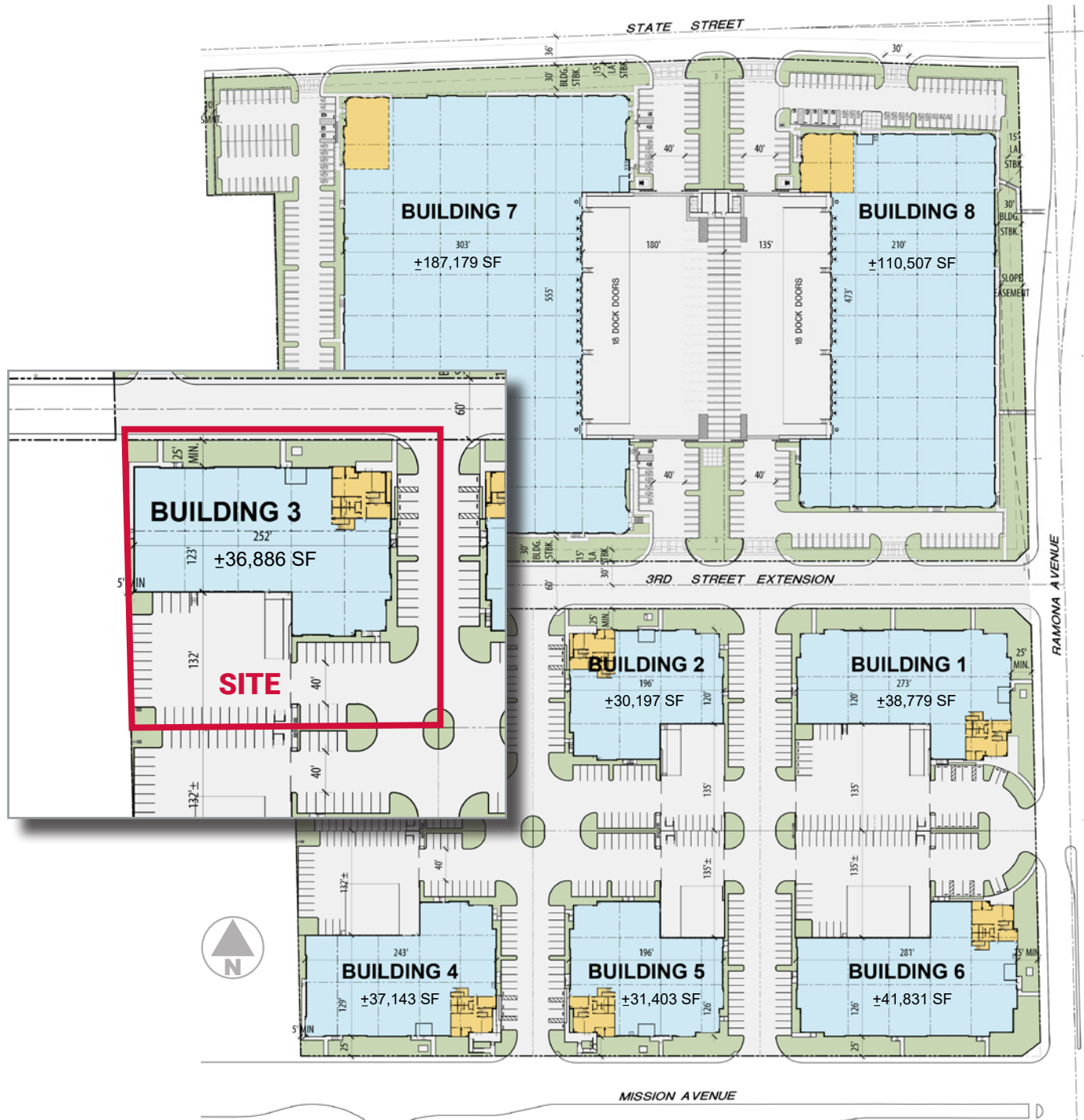
**STEVE SPRENGER**  
909.974.4078  
steve.sprenger@nrmk.com  
CA RE Lic #01202806

**NEWMARK**

**OAKMONT**  
INDUSTRIAL GROUP

# OAKMONT MISSION RAMONA BUSINESS PARK

Northwest Corner of Mission Blvd & Ramona Ave | Montclair, CA



For more information, please contact:

**MARK KEGANS, SIOR**  
909.974.4070  
mark.kegans@nrmk.com  
CA RE Lic #00866145

**RON WASHLE, SIOR**  
909.974.4071  
ron.washle@nrmk.com  
CA RE Lic #00978222

**RANDY LOCKHART**  
909.974.4067  
randy.lockhart@nrmk.com  
CA RE Lic #00974981

**STEVE SPRENGER**  
909.974.4078  
steve.sprenger@nrmk.com  
CA RE Lic #01202806

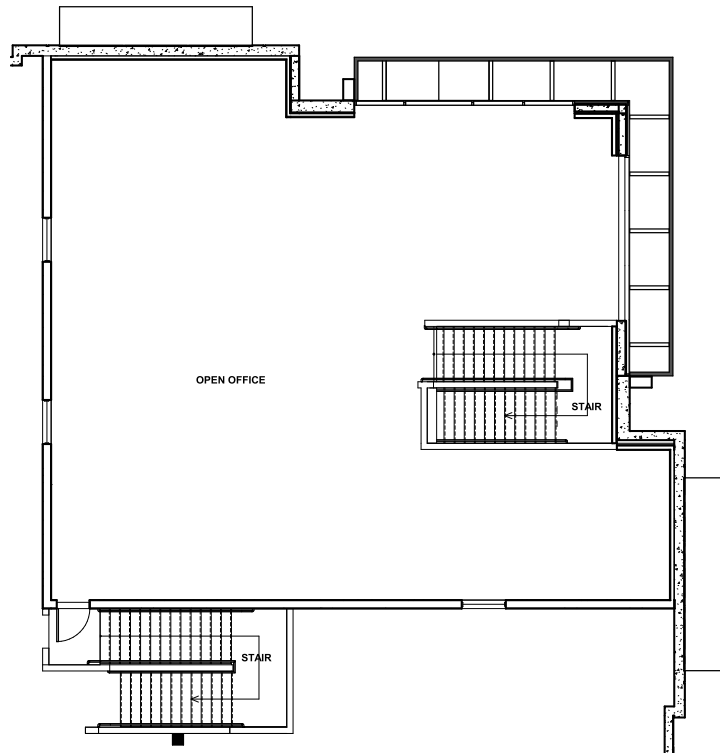
3281 East Guasti Road, Suite 370 | Ontario, CA 91761 | Corporate RE Lic. #01355491 | [www.nrmk.com](http://www.nrmk.com)  
Although all information furnished regarding property for sale, rental, or financing is from sources deemed reliable, such information has not been verified and no express representation is made nor is any to be implied as to the accuracy thereof and it is submitted subject to errors, omissions, change of price, rental or other conditions, prior sale, lease or financing, or withdrawal without notice and to any special conditions imposed by our principal.

# OAKMONT MISSION RAMONA BUSINESS PARK

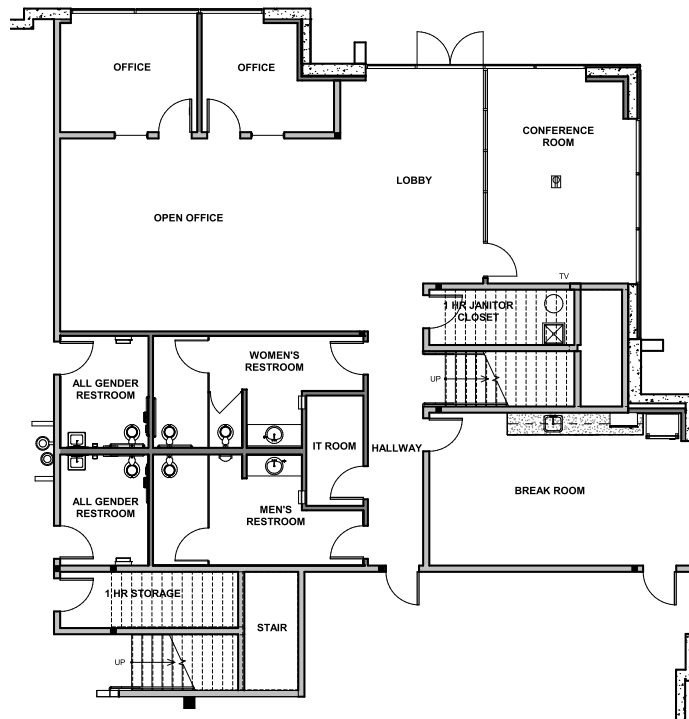
Northwest Corner of Mission Blvd & Ramona Ave | Montclair, CA

## BUILDING 3 Office Plans

**Mezzanine**  
±2,500 SF



**Ground Floor**  
±2,500 SF



*For more information, please contact:*

**MARK KEGANS, SIOR**  
909.974.4070  
mark.kegans@nmrk.com  
CA RE Lic #00866145

**RON WASHLE, SIOR**  
909.974.4071  
ron.washle@nmrk.com  
CA RE Lic #00978222

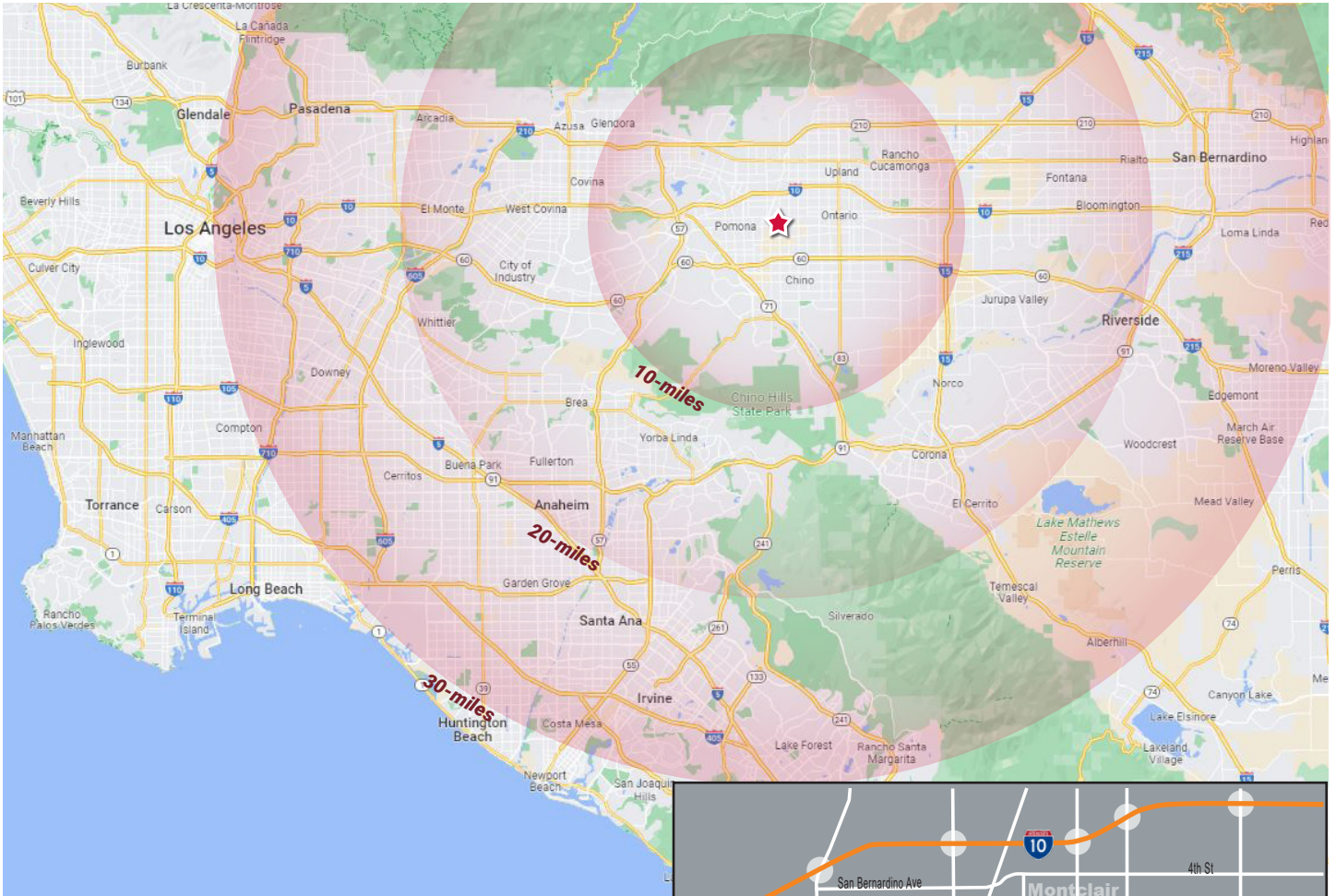
**RANDY LOCKHART**  
909.974.4067  
randy.lockhart@nmrk.com  
CA RE Lic #00974981

**STEVE SPRENGER**  
909.974.4078  
steve.sprenger@nmrk.com  
CA RE Lic #01202806

3281 East Guasti Road, Suite 370 | Ontario, CA 91761 | Corporate RE Lic. #01355491 | [www.nmrk.com](http://www.nmrk.com)  
Although all information furnished regarding property for sale, rental, or financing is from sources deemed reliable, such information has not been verified and no express representation is made nor is any to be implied as to the accuracy thereof and it is submitted subject to errors, omissions, change of price, rental or other conditions, prior sale, lease or financing, or withdrawal without notice and to any special conditions imposed by our principal.

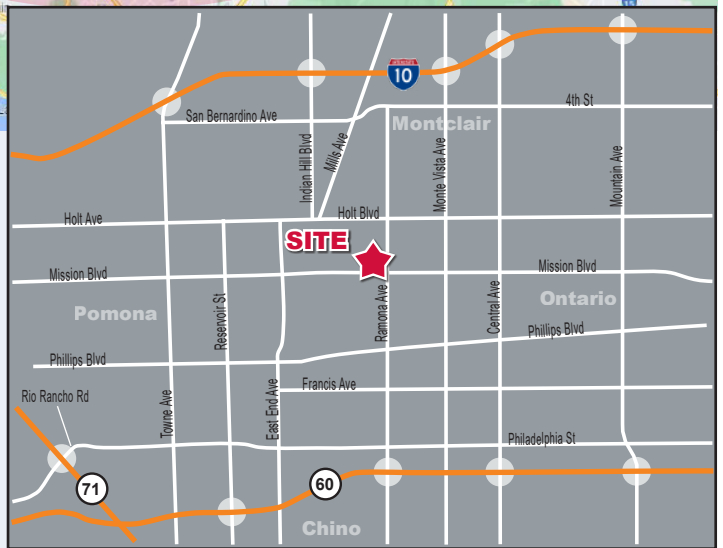
# OAKMONT MISSION RAMONA BUSINESS PARK

Northwest Corner of Mission Blvd & Ramona Ave | Montclair, CA



## Approximate Drive Distances:

I-10 (via Central Ave)	3.2 miles
Ontario International Airport	6.9 miles
CA-60 (via Ramona Ave)	1.9 miles
CA-71 (via Mission Blvd)	4.4 miles
Downtown Los Angeles	33 miles
John Wayne Airport	35 miles
Port of LA/Long Beach	50 miles
LAX	49 miles



For more information, please contact:

**MARK KEGANS, SIOR**  
 909.974.4070  
 mark.kegans@nrmk.com  
 CA RE Lic #00866145

**RON WASHLE, SIOR**  
 909.974.4071  
 ron.washle@nrmk.com  
 CA RE Lic #00978222

**RANDY LOCKHART**  
 909.974.4067  
 randy.lockhart@nrmk.com  
 CA RE Lic #00974981

**STEVE SPRENGER**  
 909.974.4078  
 steve.sprenger@nrmk.com  
 CA RE Lic #01202806