



# ALTO CENTER

MILL VALLEY'S CORE SHOPPING DESTINATION

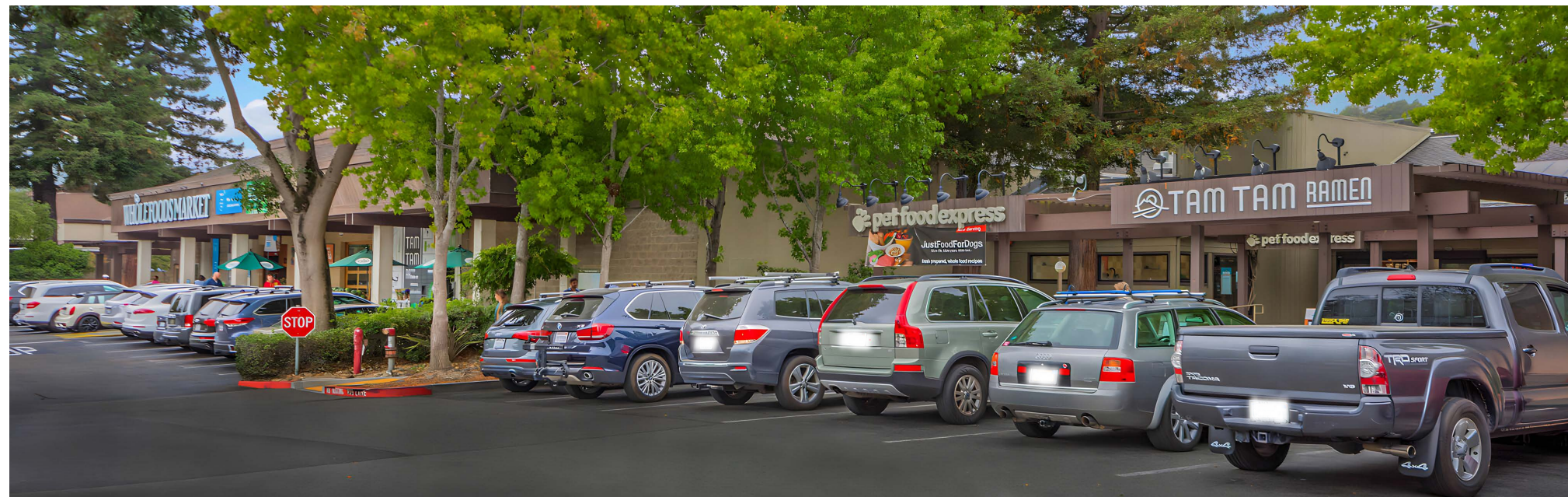
## JAMES CHUNG

(408) 400-7017  
jchung@theeoniccompany.com  
LIC #01408190



## SHELBY SWANSON

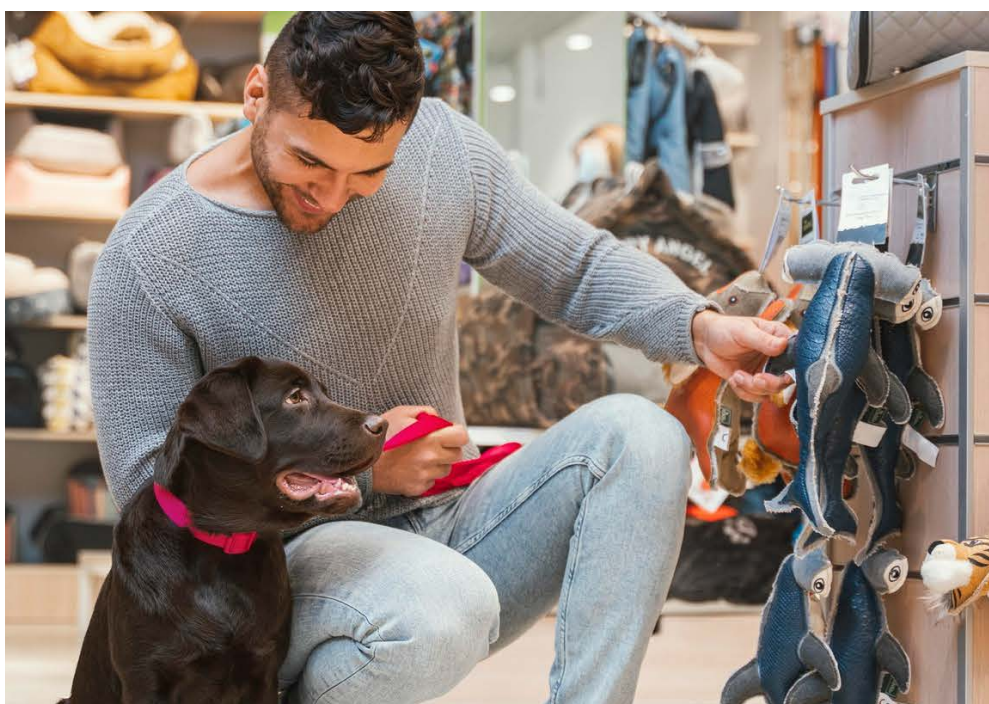
(408) 400-3879  
sswanson@theeoniccompany.com  
LIC #02075363







## PROJECT Highlights



- Alto Center has been a staple shopping center in Mill Valley since it was developed in 1961.
- Located at the intersection of East Blithedale and Lomita Drive – the major vehicular thoroughfare servicing Mill Valley to the 101 freeway with over 40,000 cars per day.
- Anchors include Whole Foods, Rite Aid, Pet Food Express, CVS and USPS.
- Rare second generation restaurant space available.



# SITE PLAN

## RETAILERS

- Rite Aid
- C2 Education
- Whole Foods
- USPS
- CVS
- Bank of America
- 01. Pet Food Express
- 03. Mendocino Farms
- 04. BFT Training
- 05. Vitality Bowls
- 06. AVAILABLE: 4,500 SF
- 07. AVAILABLE: 1,234 SF
- 08. UPS Store
- 09. AVAILABLE: 1,747 SF  
(2nd Generation Restaurant)
- 10. Holly Nails





**RETAIL MAP**

**WOODLANDS MARKET**

**MARIN COUNTRY MART**

- Bed Bath & Beyond
- Rustic Bakery

**BON AIR CENTER**

- Mollie Stone's
- CVS Pharmacy
- Gott's Roadside
- Susie Cakes

**LUCKY**

**THE MARKETPLACE**

- Archrival Sports
- Book Passage

**TOWN CENTER CORTE MADERA**

- The Container Store
- REI
- Safeway
- Crate & Barrel
- Urban Outfitters
- Ethan Allen
- RiteAid
- Bay Club
- Barnes & Noble

**ALTO CENTER**

**WHOLE FOODS MARKET**

**STRAWBERRY VILLAGE**

- Safeway
- West Elm

**MARIN GATEWAY SHOPPING CENTER**

- Target
- CVS
- Ross
- Starbucks
- West Marine

**SAN RAFAEL**

**THE HOME DEPOT**

**TARGET**

**MARIN CENTRAL PLAZA**

- Trader Joe's
- Cost Plus World Market
- BeMo
- The Vitamin Shoppe

**CORTE MADERA**

**PARADISE SHOPPING CENTER**

Nugget Market

**THE VILLAGE AT CORTE MADERA**

- Macy's
- Nordstrom
- Apple
- The Cheesecake Factory
- Anthropologie
- Pottery Barn
- Restoration Hardware
- Williams-Sonoma

**RICHMOND BRIDGE**

**Larkspur**

**Mill Valley**

**US 101**

**N**



An aerial map of the San Francisco Peninsula, specifically the area from San Rafael in the north to Sausalito in the south. The map is overlaid with a network of white lines representing major roads and highways, including US 101 and the Richmond Bridge. Various retail centers and shopping areas are highlighted with white callout boxes containing their names and lists of stores. The callouts are: 

- WOODLANDS MARKET**
- MARIN COUNTRY MART**: Bed Bath & Beyond, Rustic Bakery
- BON AIR CENTER**: Mollie Stone's, CVS Pharmacy, Gott's Roadside, Susie Cakes
- LUCKY**
- THE MARKETPLACE**: Archrival Sports, Book Passage
- TOWN CENTER CORTE MADERA**: The Container Store, REI, Safeway, Crate & Barrel, Urban Outfitters, Ethan Allen, RiteAid, Bay Club, Barnes & Noble
- ALTO CENTER** (highlighted with a red border)
- STRAWBERRY VILLAGE**: Safeway, West Elm
- MARIN GATEWAY SHOPPING CENTER**: Target, CVS, Ross, Starbucks, West Marine
- MARIN CENTRAL PLAZA**: Trader Joe's, Cost Plus World Market, BeMo, The Vitamin Shoppe
- THE VILLAGE AT CORTE MADERA**: Macy's, Nordstrom, Apple, The Cheesecake Factory, Anthropologie, Pottery Barn, Restoration Hardware, Williams-Sonoma
- PARADISE SHOPPING CENTER**: Nugget Market
- San Rafael**: THE HOME DEPOT, TARGET

 The map also shows the San Francisco Bay to the east, the Marin Peninsula to the west, and the Golden Gate Bridge in the distance. A north arrow is located in the bottom right corner. The title "RETAIL MAP" is in the top left corner.

An aerial map of the San Francisco Peninsula, specifically the area from San Rafael in the north to Sausalito in the south. The map is overlaid with a network of white lines representing major roads and highways, including US 101 and the Richmond Bridge. Various retail centers and shopping areas are highlighted with white callout boxes containing their names and lists of stores. The callouts are: 

- WOODLANDS MARKET**
- MARIN COUNTRY MART**: Bed Bath & Beyond, Rustic Bakery
- BON AIR CENTER**: Mollie Stone's, CVS Pharmacy, Gott's Roadside, Susie Cakes
- LUCKY**
- THE MARKETPLACE**: Archrival Sports, Book Passage
- TOWN CENTER CORTE MADERA**: The Container Store, REI, Safeway, Crate & Barrel, Urban Outfitters, Ethan Allen, RiteAid, Bay Club, Barnes & Noble
- ALTO CENTER** (highlighted with a red border)
- STRAWBERRY VILLAGE**: Safeway, West Elm
- MARIN GATEWAY SHOPPING CENTER**: Target, CVS, Ross, Starbucks, West Marine
- MARIN CENTRAL PLAZA**: Trader Joe's, Cost Plus World Market, BeMo, The Vitamin Shoppe
- THE VILLAGE AT CORTE MADERA**: Macy's, Nordstrom, Apple, The Cheesecake Factory, Anthropologie, Pottery Barn, Restoration Hardware, Williams-Sonoma
- PARADISE SHOPPING CENTER**: Nugget Market
- San Rafael**: THE HOME DEPOT, TARGET

 The map also shows the San Francisco Bay to the east and the Marin Peninsula to the west. A north arrow is located in the bottom right corner. The title "RETAIL MAP" is in the top left corner.

- RETAIL MAP**

**WOODLANDS MARKET**

**MARIN COUNTY MART**

  - Bed Bath & Beyond
  - Rustic Bakery

**BON AIR CENTER**

  - Mollie Stone's
  - CVS Pharmacy
  - Gott's Roadside
  - Susie Cakes

**LUCKY**

**THE MARKETPLACE**

  - Archrival Sports
  - Book Passage

**TOWN CENTER CORTE MADERA**

  - The Container Store
  - REI
  - Safeway
  - Crate & Barrel
  - Urban Outfitters
  - Ethan Allen
  - RiteAid
  - Bay Club
  - Barnes & Noble

**ALTO CENTER**

**WHOLE FOODS MARKET**

**STRAWBERRY VILLAGE**

  - Safeway
  - West Elm

**MARIN GATEWAY SHOPPING CENTER**

  - Target
  - CVS
  - Ross
  - Starbucks
  - West Marine

**MARIN CENTRAL PLAZA**

  - Trader Joe's
  - Cost Plus World Market
  - BeMo
  - The Vitamin Shoppe

**THE VILLAGE AT CORTE MADERA**

  - Macy's
  - Nordstrom
  - Apple
  - The Cheesecake Factory
  - Anthropologie
  - Pottery Barn
  - Restoration Hardware
  - Williams-Sonoma

**PARADISE SHOPPING CENTER**

Nugget Market

**THE HOME DEPOT**

**TARGET**

**San Rafael**

**Larkspur**

**Mill Valley**

**Corte Madera**

**Richmond Bridge**

**US 101**

**N**

**RETAIL MAP**

**WOODLANDS MARKET**

**MARIN COUNTRY MART**

- Bed Bath & Beyond
- Rustic Bakery

**BON AIR CENTER**

- Mollie Stone's
- CVS Pharmacy
- Gott's Roadside
- Susie Cakes

**LUCKY**

**THE MARKETPLACE**

- Archrival Sports
- Book Passage

**TOWN CENTER CORTE MADERA**

- The Container Store
- REI
- Safeway
- Crate & Barrel
- Urban Outfitters
- Ethan Allen
- RiteAid
- Bay Club
- Barnes & Noble

**ALTO CENTER**

**WHOLE FOODS MARKET**

**STRAWBERRY VILLAGE**

- Safeway
- West Elm

**MARIN GATEWAY SHOPPING CENTER**

- Target
- CVS
- Ross
- Starbucks
- West Marine

**San Rafael**

**THE HOME DEPOT**

**TARGET**

**MARIN CENTRAL PLAZA**

- Trader Joe's
- Cost Plus World Market
- BeMo
- The Vitamin Shoppe

**THE VILLAGE AT CORTE MADERA**

- Macy's
- Nordstrom
- Apple
- The Cheesecake Factory
- Anthropologie
- Pottery Barn
- Restoration Hardware
- Williams-Sonoma

**Corte Madera**

**PARADISE SHOPPING CENTER**

Nugget Market

**Richmond Bridge**

**Mill Valley**

**Larkspur**

**US 101**

**US 101**

**US 101**

**US 101**

**N**

- RETAIL MAP**

**WOODLANDS MARKET**

**MARIN COUNTRY MART**

  - Bed Bath & Beyond
  - Rustic Bakery

**BON AIR CENTER**

  - Mollie Stone's
  - CVS Pharmacy
  - Gott's Roadside
  - Susie Cakes

**LUCKY**

**THE MARKETPLACE**

  - Archrival Sports
  - Book Passage

**TOWN CENTER CORTE MADERA**

  - The Container Store
  - REI
  - Safeway
  - Crate & Barrel
  - Urban Outfitters
  - Ethan Allen
  - RiteAid
  - Bay Club
  - Barnes & Noble

**ALTO CENTER**

**WHOLE FOODS MARKET**

**STRAWBERRY VILLAGE**

  - Safeway
  - West Elm

**MARIN GATEWAY SHOPPING CENTER**

  - Target
  - CVS
  - Ross
  - Starbucks
  - West Marine

**San Rafael**

**THE HOME DEPOT**

**TARGET**

**MARIN CENTRAL PLAZA**

  - Trader Joe's
  - Cost Plus World Market
  - BeMo
  - The Vitamin Shoppe

**THE VILLAGE AT CORTE MADERA**

  - Macy's
  - Nordstrom
  - Apple
  - The Cheesecake Factory
  - Anthropologie
  - Pottery Barn
  - Restoration Hardware
  - Williams-Sonoma

**Corte Madera**

**PARADISE SHOPPING CENTER**

Nugget Market

**Richmond Bridge**

**Mill Valley**

**Larkspur**

**US 101**

**US 101**

**US 101**

**US 101**

**N**

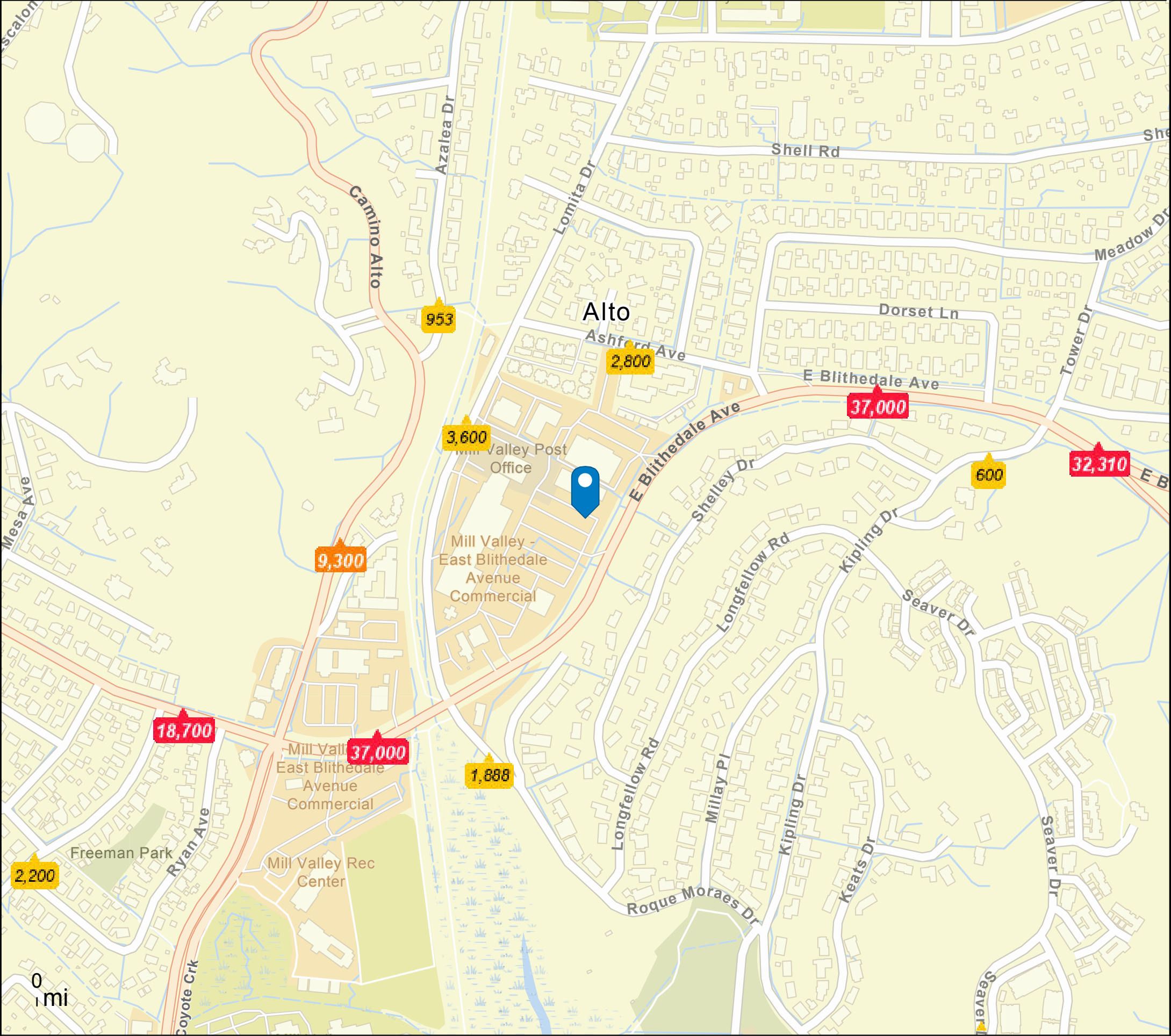




# THE DEMOGRAPHICS

	1 MILE	3 MILE	5 MILE
Total Population	12,705	60,932	118,168
Daytime Population	6,482	31,749	69,769
Average Household Income	\$219,383	\$229,105	\$214,978

- Average Daily Traffic Volume**
- ▲ Up to 6,000 vehicles per day
  - ▲ 6,001 - 15,000
  - ▲ 15,001 - 30,000
  - ▲ 30,001 - 50,000
  - ▲ 50,001 - 100,000
  - ▲ More than 100,000 per day





AERIAL  
VIEW





# ALTO CENTER

MILL VALLEY'S CORE SHOPPING DESTINATION

© 2025 the econic company. No warranty or representation, express or implied, is made to the accuracy or completeness of the information contained herein, and same is submitted subject to errors, omissions, change of price, rental or other conditions, withdrawal without notice, and to any special listing conditions imposed by the property owner(s). As applicable, we make no representation as to the condition of the property (or properties) in question.

## JAMES CHUNG

(408) 400-7017  
jchung@the**econic**company.com  
LIC #01408190

## SHELBY SWANSON

(408) 400-3879  
sswanson@the**econic**company.com  
LIC #02075363

