

# BEAUTIFUL OFFICE SUITE FOR LEASE

## Whitewater Professional Plaza - High Visibility On Cook Street

- Beautiful Well-Maintained Center
- Central Valley Location - Minutes from Hwy 111
- Elevator & Stairs
- Plenty of Parking



43100 Cook Street, Suite 201, Palm Desert, CA 92211



www.baxleyproperties.com  
Phone: 760-773-3310  
Fax: 760-773-3013  
73712 Alessandro Drive, Ste B-4,  
Palm Desert, CA 92260

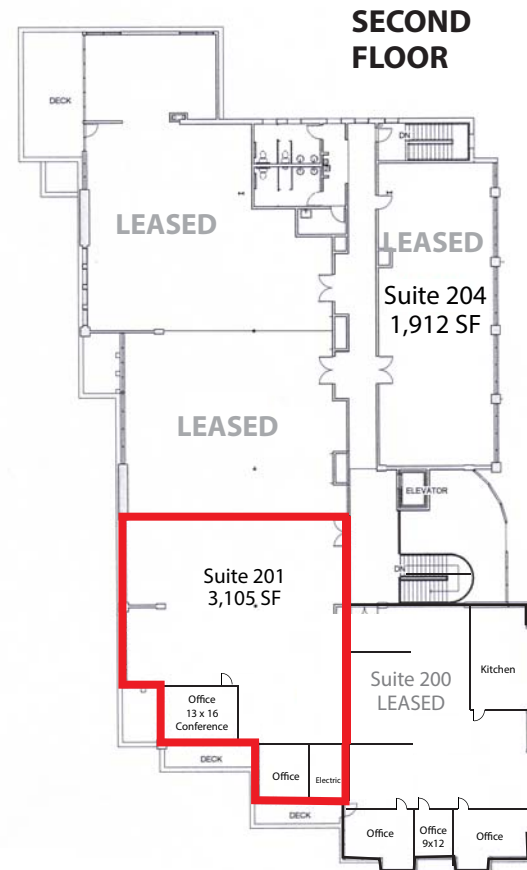
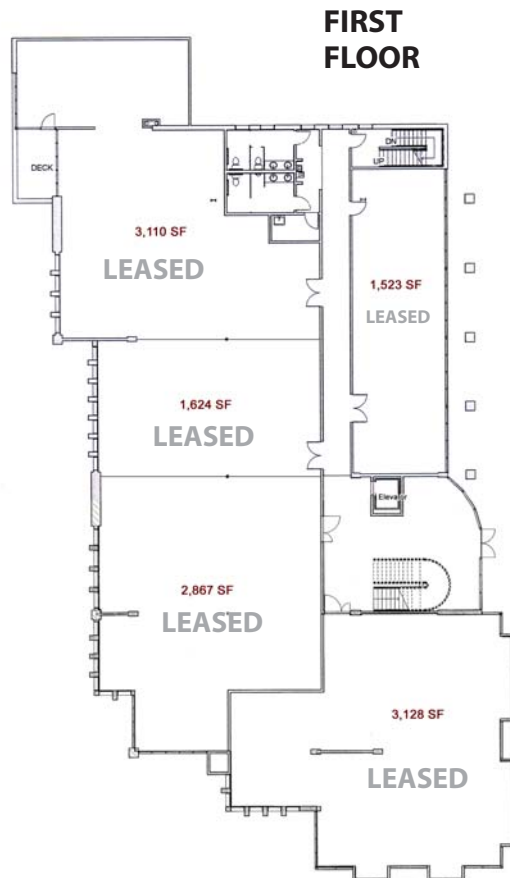
**Suite 201 - 3,105 SF (\$1.40/SF + NNN)**

**Matthew Longstreth**  
matthew@baxleyproperties.com  
**Off: 760-773-3310**  
**Cell: 949-293-1314**  
DRE# 01322594

# BEAUTIFUL OFFICE SUITE FOR LEASE

43100 Cook Street, Suites 201, Palm Desert, CA 92211

## Floor Plan

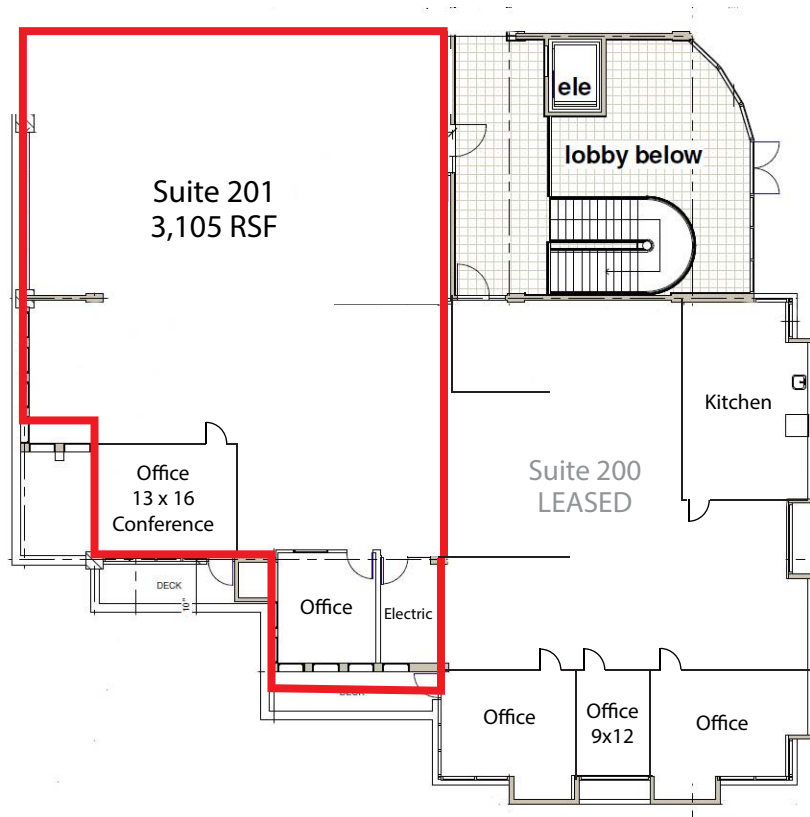


# BEAUTIFUL OFFICE SUITE FOR LEASE

## Floor Plan - 2nd Floor

43100 Cook Street, Palm Desert, CA 92211

### Suite 201



### FOR LEASE

Suite 201 - 3,105 RSF

**\$1.40/SF + \$.60/SF NNN**

- 15% Load Factor
- Large 2nd Floor Corner Office
- 2 Private Offices
- Large Bullpen
- Community Restrooms
- Plenty of Above Ground Covered Parking Spaces

