

50270 E. RUSSELL SCHMIDT BLVD.  
CHESTERFIELD TWP., MICHIGAN



**SIGNATURE  
ASSOCIATES**  
KNOW SIGNATURE | KNOW RESULTS

**INDUSTRIAL FOR LEASE**  
22,114 Square Feet Available



## PROPERTY FEATURES

- 22,114 square feet available
- 2,500 square feet office
- 20' clear height
- (1) 12' x 14' grade level door
- (2) truckwells
- Outstanding heavy manufacturing facility with well-appointed office
- Heavy power distribution throughout
- Large fenced storage yard
- Close-proximity to I-94
- Lease Rate: \$6.95/sq. ft. NNN



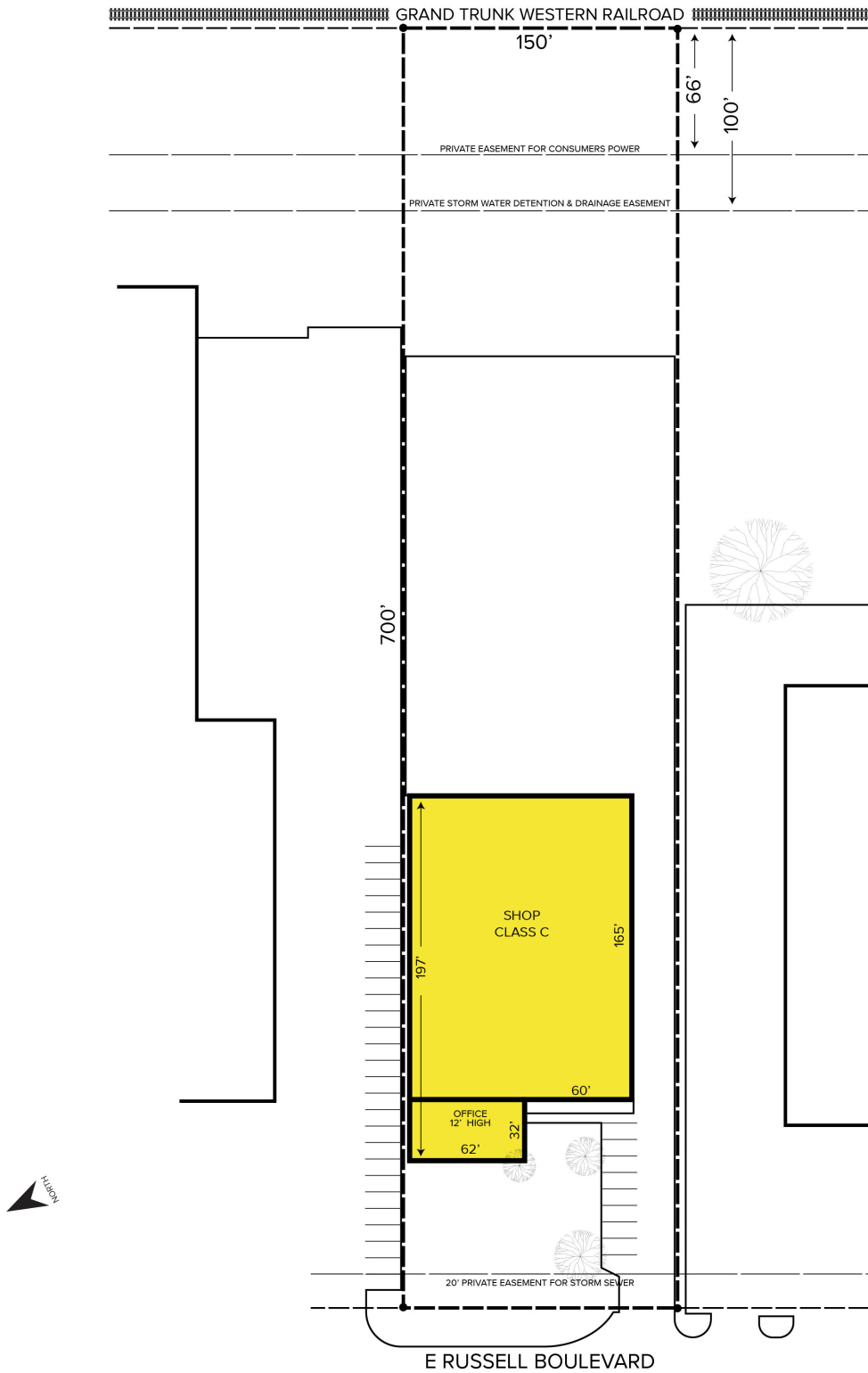
For more information, please contact:

**BEN WILKIEMEYER**  
(248) 359 0624  
bwilkiemeyer@signatureassociates.com

**PAUL SAAD**  
(248) 359 0652  
psaad@signatureassociates.com

**SIGNATURE ASSOCIATES**  
One Towne Square, Suite 1200  
Southfield, MI 48076  
www.signatureassociates.com

Site Plan



For more information, please contact:

**BEN WILKIEMEYER**  
(248) 359 0624  
bwilkiemeyer@signatureassociates.com

**PAUL SAAD**  
(248) 359 0652  
psaad@signatureassociates.com

**SIGNATURE ASSOCIATES**  
One Towne Square, Suite 1200  
Southfield, MI 48076  
www.signatureassociates.com

# 50270 E. Russell Schmidt Blvd. – Chesterfield Twp., MI Industrial For Lease

22,114  
Square Feet  
AVAILABLE

Aerial



For more information, please contact:

**BEN WILKIEMEYER**  
(248) 359 0624  
bwilkiemeyer@signatureassociates.com

**PAUL SAAD**  
(248) 359 0652  
psaad@signatureassociates.com

**SIGNATURE ASSOCIATES**  
One Towne Square, Suite 1200  
Southfield, MI 48076  
www.signatureassociates.com