

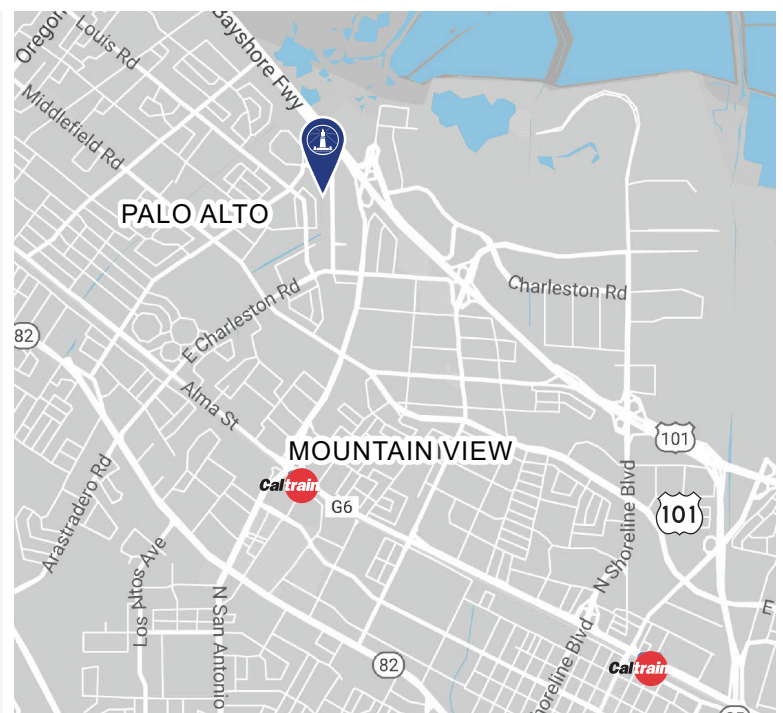


## ±259,000 SF FOR LEASE - HEAVY POWER, ADV. MFG/R&D/ INDUSTRIAL CAMPUS OPPORTUNITY IN PALO ALTO



### PROJECT FEATURES

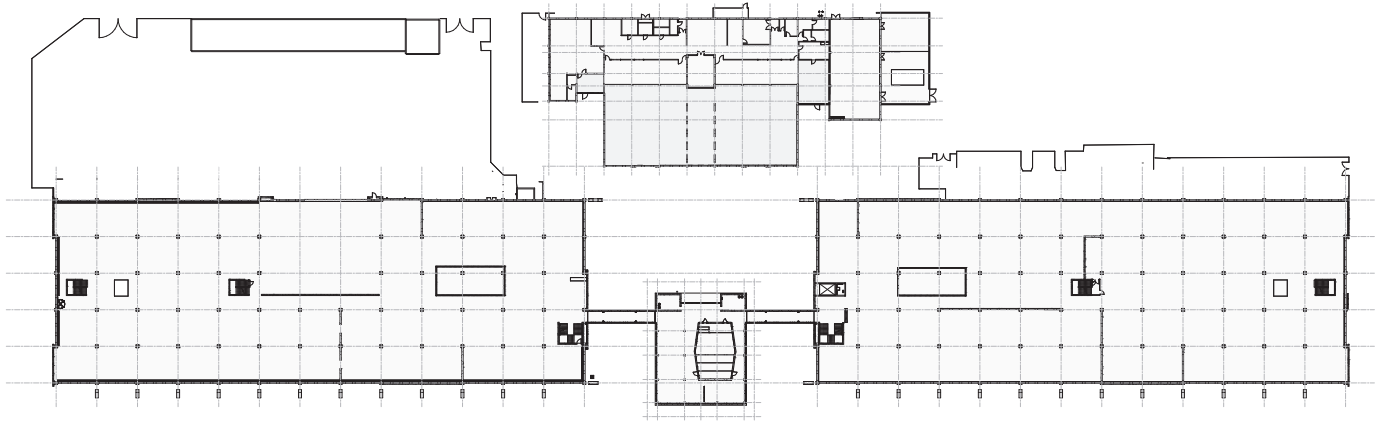
- Available Now
- South Palo Alto location, Highway 101 signage
- Two, 2-story wings connected by a central lobby and amenity building
- ±50,000 SF Floorplates
- Centralized lobby & amenities building securing the outdoor courtyard
- Separate amenity/cafe building
- Heavy power: 12,000 amps at 277/480v (6, 2,500 Amp, 480/277v panels)
- 14' deck to deck clear height, opportunity to remove parts of second floor for approx. 24-28' clear
- Abundant Parking: 703 parking stalls (2.71/1,000)
- Approx. 5 acres of parking/secured yard potential
- Flexible lease terms - call to discuss short and long term lease structures
- Convenient location overlooking Highway 101 at the San Antonio exit in Palo Alto
- Commuter bus system gives tenants access to Caltrain



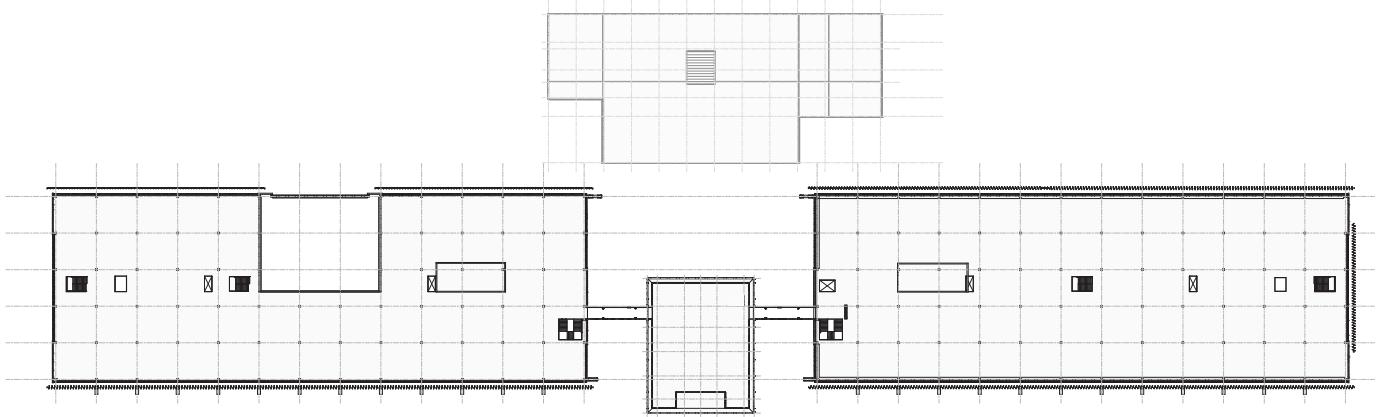




## FLOOR PLANS



**Level 1**

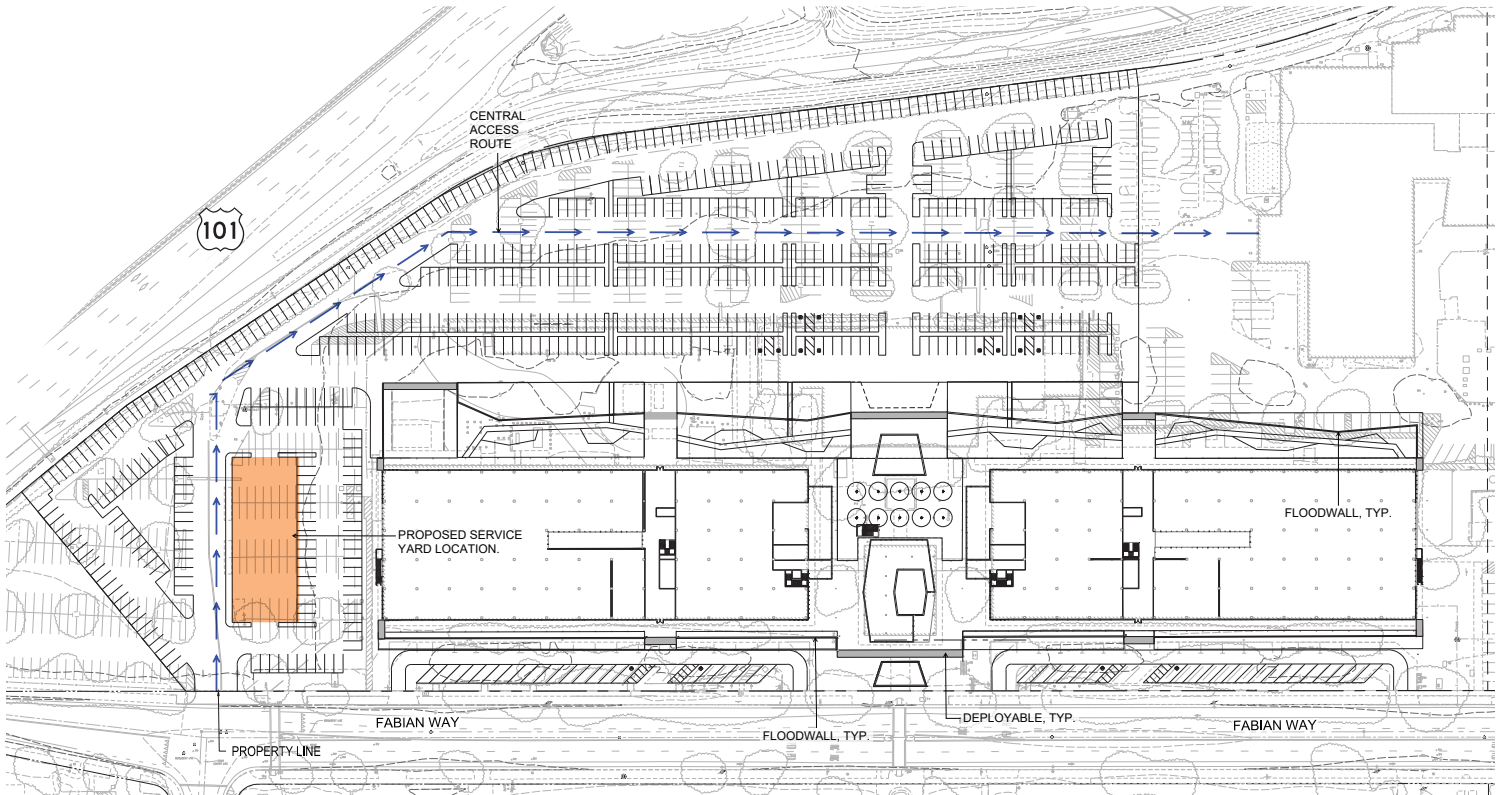


**Level 2**





**SITE PLAN**



**ALEXANDRIA CONTACT INFORMATION**

**Todd Miller**  
Senior Vice President  
Leasing

T: 415.554.8846 | M: 650.444.1295  
tmiller@are.com

**Jeanette Li**  
Senior Director  
Market Research & Leasing

T: 415.321.3816 | M: 415.610.1959  
jli@are.com

**Andrew Zink**  
Senior Director  
Vice President - Leasing

M: 415.971.5799  
azink@are.com

**BROKER CONTACT INFORMATION**

**Terry Haught**

Newmark  
T: 650.688.8498 | M: 650.520.5886  
terry.haught@nrmk.com  
CA RE License #00865107

**Randy Scott**

Newmark  
T: 650.688.8510 | M: 650.465.4222  
randy.scott@nrmk.com  
CA RE License #00852506

**Joe Kelly**

Newmark  
M: 408.314.7710  
joe.kelly@nrmk.com  
CA RE License #01420963

**Mary Hines**

Newmark  
T: 650.358.5271 | M: 510.541.1998  
mary.hines@nrmk.com  
CA RE License #01281208

**Jennifer Vergara**

Newmark  
T: 650.358.5265 | M: 408.655.8213  
jennifer.vergara@nrmk.com  
CA RE License #01355979

**ABOUT ALEXANDRIA**

**Alexandria Real Estate Equities, Inc. (NYSE:ARE)**, an S&P 500® company, is an urban office REIT uniquely focused on collaborative life science and technology campuses in AAA innovation cluster locations, including Greater Boston, San Francisco, New York City, San Diego, Seattle, Maryland, and Research Triangle Park. Alexandria has a longstanding and proven track record of developing Class A properties clustered in urban life science and technology campuses that provide its innovative tenants with highly dynamic and collaborative environments that enhance their ability to successfully recruit and retain world-class talent and inspire productivity, efficiency, creativity, and success.

A project owned and managed by ARE-San Francisco No. 12, LLC. The description of the property set forth herein is provided for informational purposes only without representation or warranty of any kind to its accuracy or completeness by ARE-San Francisco No. 12, LLC.

COPYRIGHT © 2022. ALEXANDRIA REAL ESTATE EQUITIES, INC. ALL RIGHTS RESERVED.