



FOR LEASE

# 115-203 E Hudson Avenue Royal Oak, MI

Industrial Flex Space Available

## Property Highlights

- 4,000 - 16,000 Square Feet on 1.01 Acres
- Completely Renovated Including New HVAC, Roof, Overhead Door and Façade
- 16' Clear Height
- (6) 14'x14' Overhead Doors
- Each Unit has an Office and Restrooms
- Close Proximity to Downtown Royal Oak
- Minutes away from Woodward Avenue, I-696 and I-75
- Ample Parking

## CONTACT US



**John Salsberry, SIOR**  
248 226 1636  
[john.salsberry@colliers.com](mailto:john.salsberry@colliers.com)

**Colliers Detroit**  
400 W 4<sup>th</sup> Street, Suite 350  
Royal Oak, MI 48067  
[colliers.com/detroit](http://colliers.com/detroit)



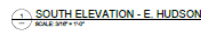
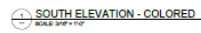
4,000 - 16,000 SF INDUSTRIAL FLEX SPACE FOR LEASE

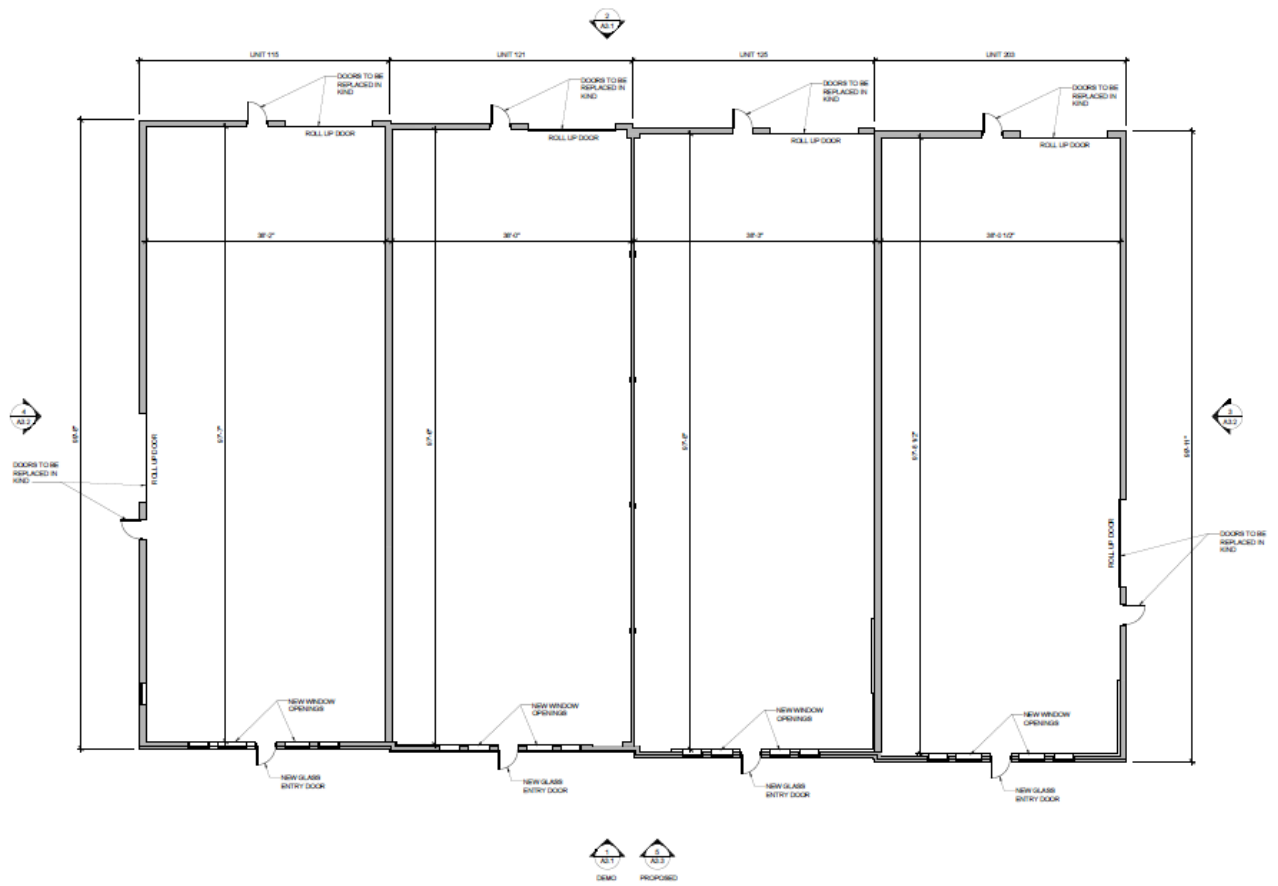
Colliers

## Renderings





[illegible]

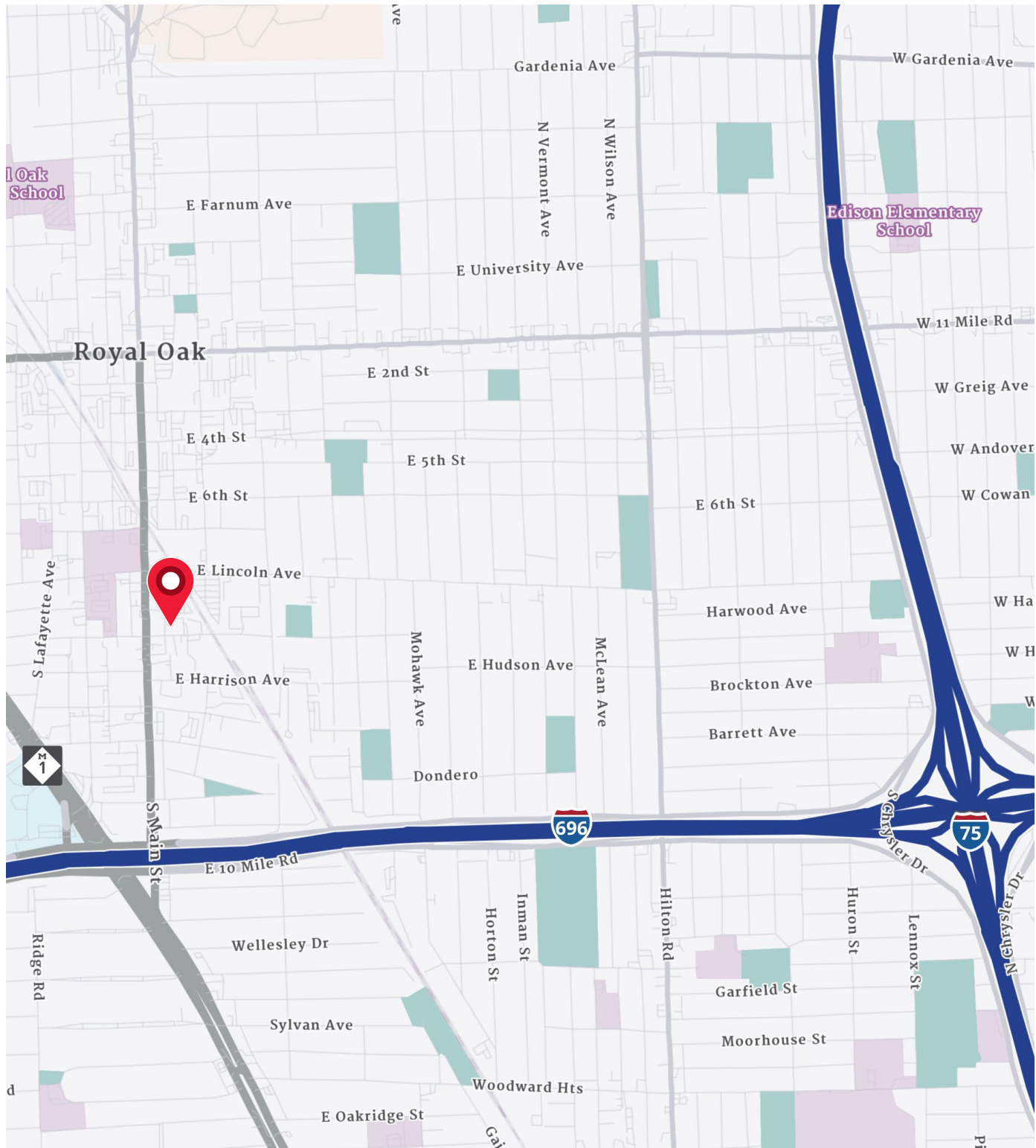


ARCHITECTURAL FLOOR PLAN  
ATT 1 SCALE: 1/8" = 1'-0"

4,000 - 16,000 SF INDUSTRIAL FLEX SPACE FOR LEASE

Colliers

## Location Map

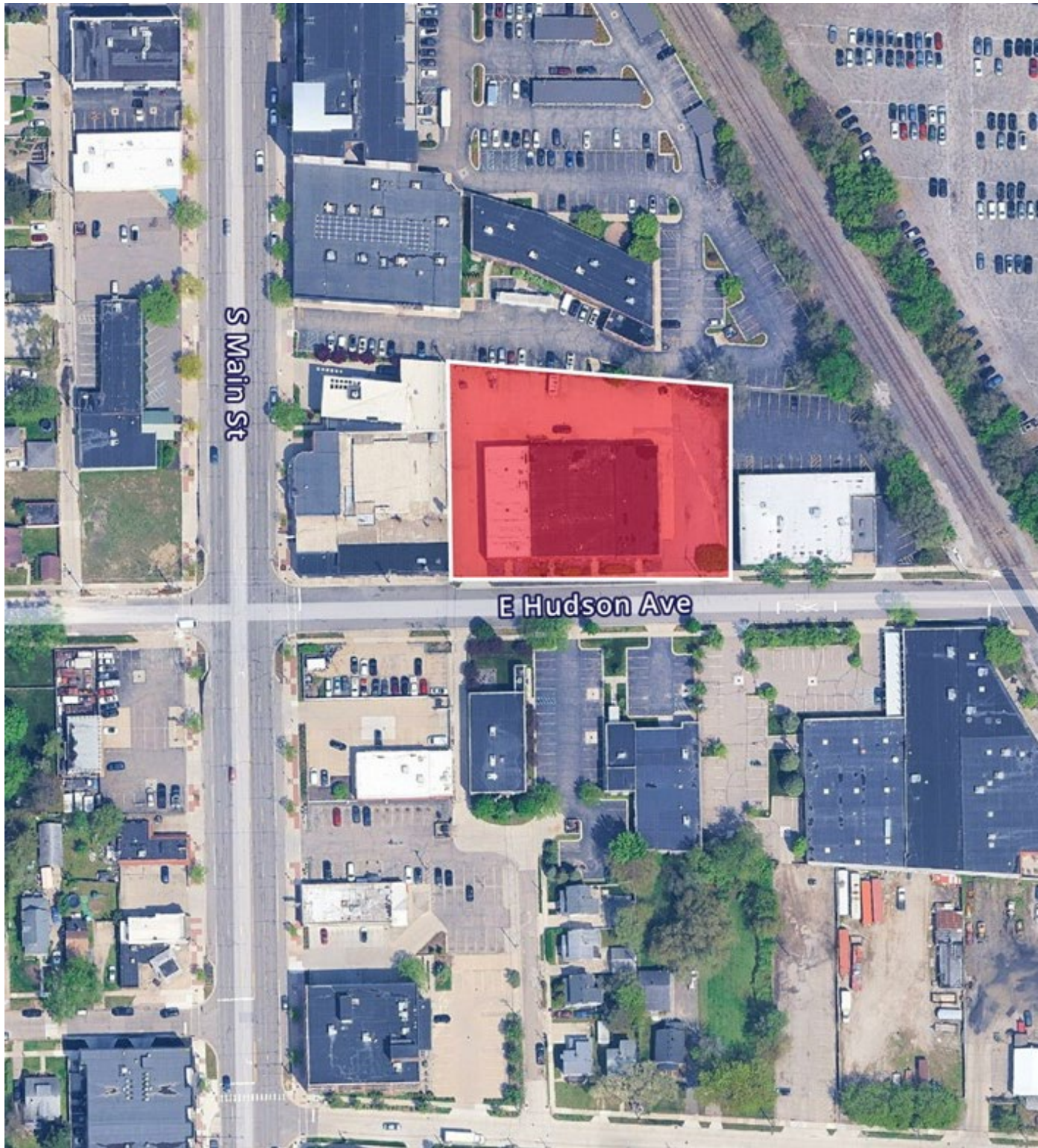




4,000 - 16,000 SF INDUSTRIAL FLEX SPACE FOR LEASE

Colliers

## Aerial Map

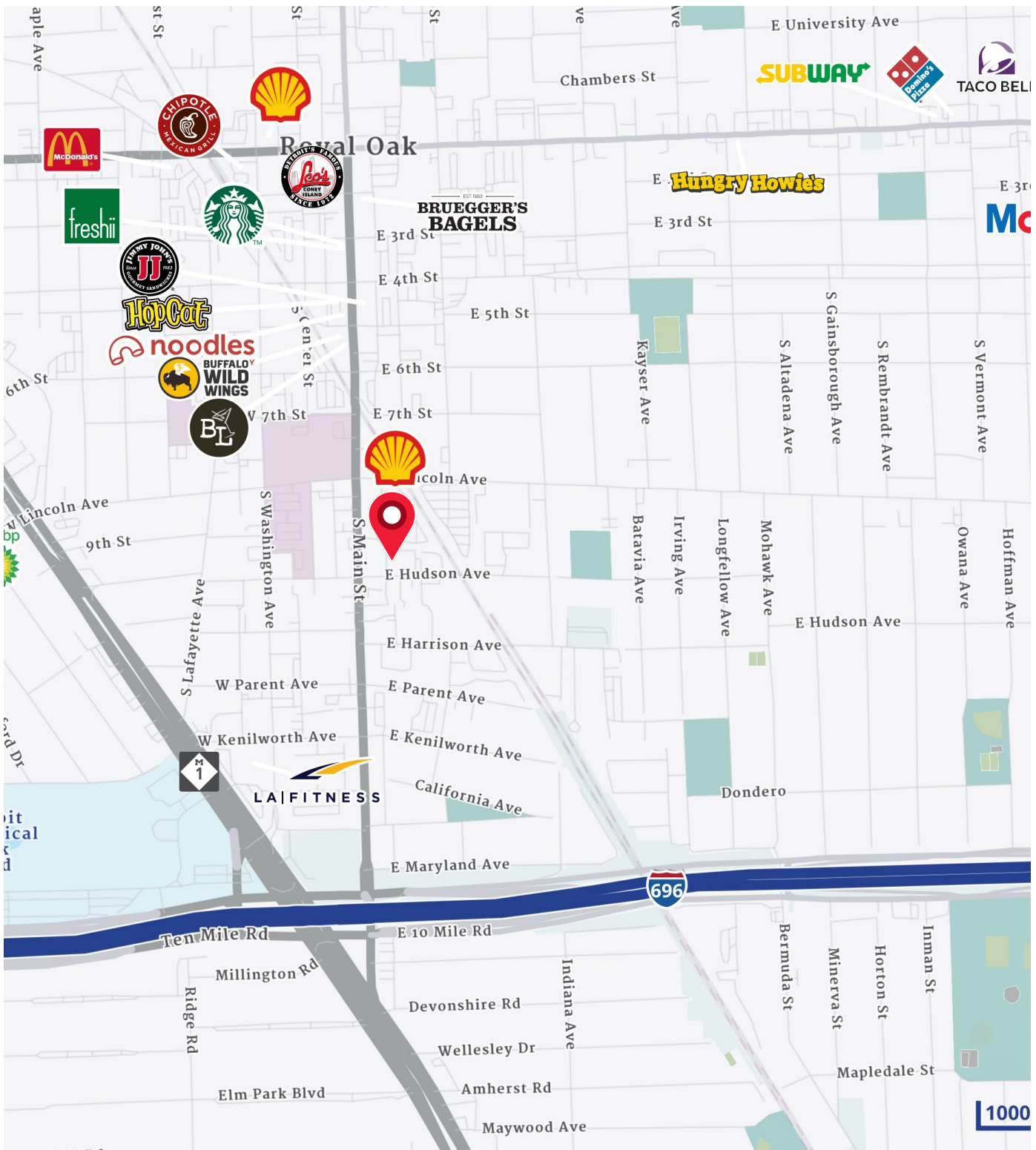




4,000 - 16,000 SF INDUSTRIAL FLEX SPACE FOR LEASE

Colliers

## Merchant Map



# Royal Oak Demographics

## Household & Population



**58,620**  
Current Total  
Population



**30,221**  
Current Total  
Households



**1.93**  
Average  
Household Size

## Income & Households Summary



**\$100,243**  
2024 Median  
Household  
Income



**\$130,320**  
Average  
Household  
Income



**\$67,191**  
Per Capita  
Income

## Household & Population Characteristics



**\$343,176**  
Median Home  
Value



**68.5%**  
Owner Occupied  
Housing Units



**37.4**  
Median  
Age

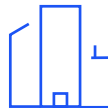


**48.8%**  
Female  
Population



**41.9%**  
% Married  
(15 or older)

## Business



**2,378**  
Total  
Businesses



**32,691**  
Total  
Employees

### Data Notes:

- Household population includes persons not residing in group quarters. Average Household Size is the household population divided by total households. Persons in families include the householder and persons related to the householder by birth, marriage, or adoption.
- Income represents the preceding year, expressed in current dollars. Household income includes wage and salary earnings, interest dividends, net rents, pensions, SSI and welfare payments, child support, and alimony.
- Per Capita Income represents the income received by all persons aged 15 years and over divided by the total population.



**John Salsberry, SIOR**  
248 226 1636  
john.salsberry@colliers.com