

CHICAGO INDUSTRIAL BUILDING WITH AMPLE LOADING AVAILABLE FOR FOR SALE

5328 N Northwest Hwy
Chicago IL



BUILDING SPECIFICATIONS

- **TYPE:** Industrial Building
- **Building Size:** ±17,350 sq. ft.
 - ±1,000 sq. ft. Office and separate restrooms
 - ±16,350 sq. ft. Warehouse
- **Land Size:** ±21,031 SF
- **Price: Subject to Offer**
- **2023 RE Taxes:** \$60,806.76 (\$3.50/sq. ft.)

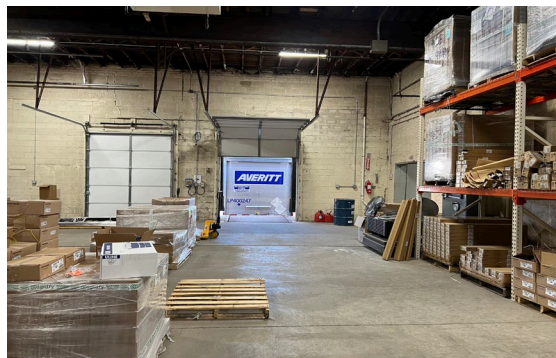
BUILDING FEATURES

- **Clear Heights:** 13'-14' 7"
- **Ceiling Heights:** 13' 7" – 17'
- **Loading:**
 - Two (2) exterior truck level docks
 - Two (2) drive-in doors
- **Power:** 800 Amps / 240 V
- **Zoning:** M1-2



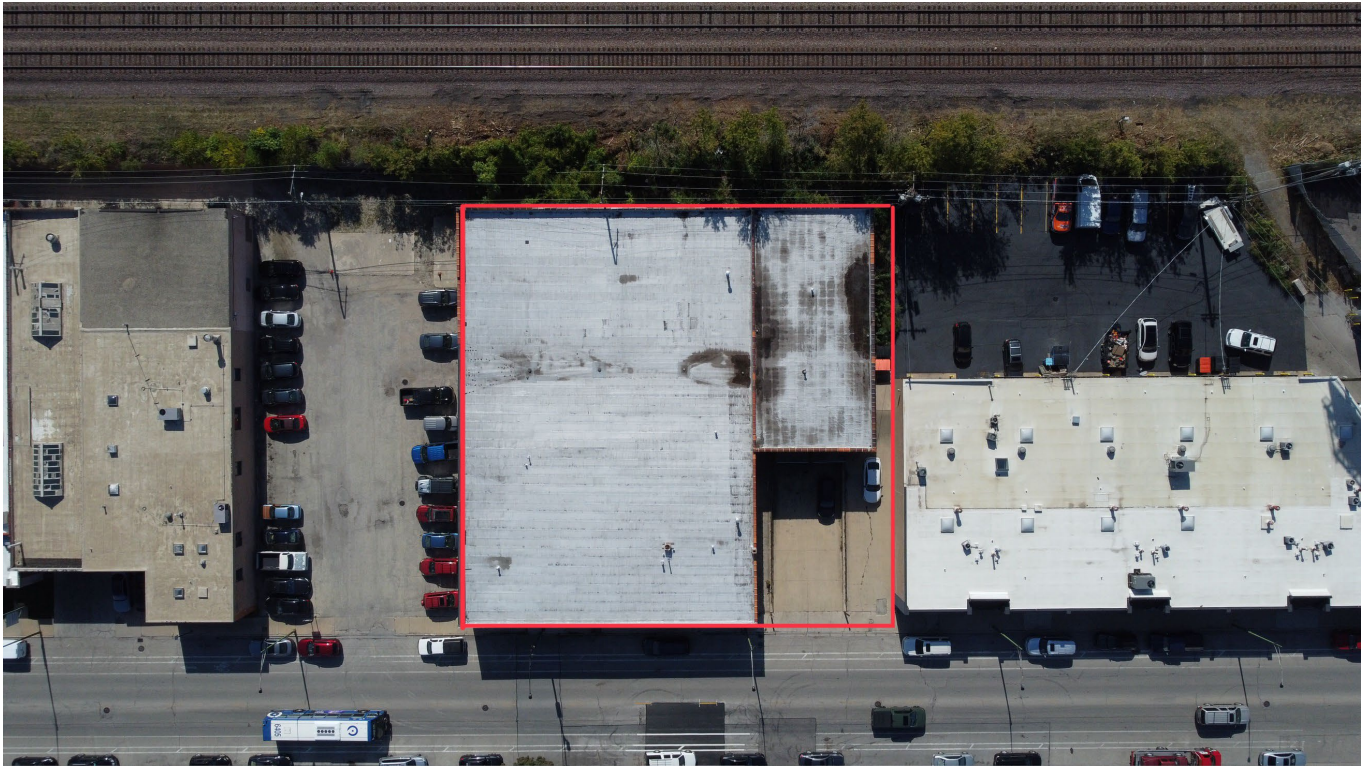
CHICAGO INDUSTRIAL BUILDING WITH AMPLE LOADING AVAILABLE FOR FOR SALE

5328 N Northwest
Highway
Chicago, IL



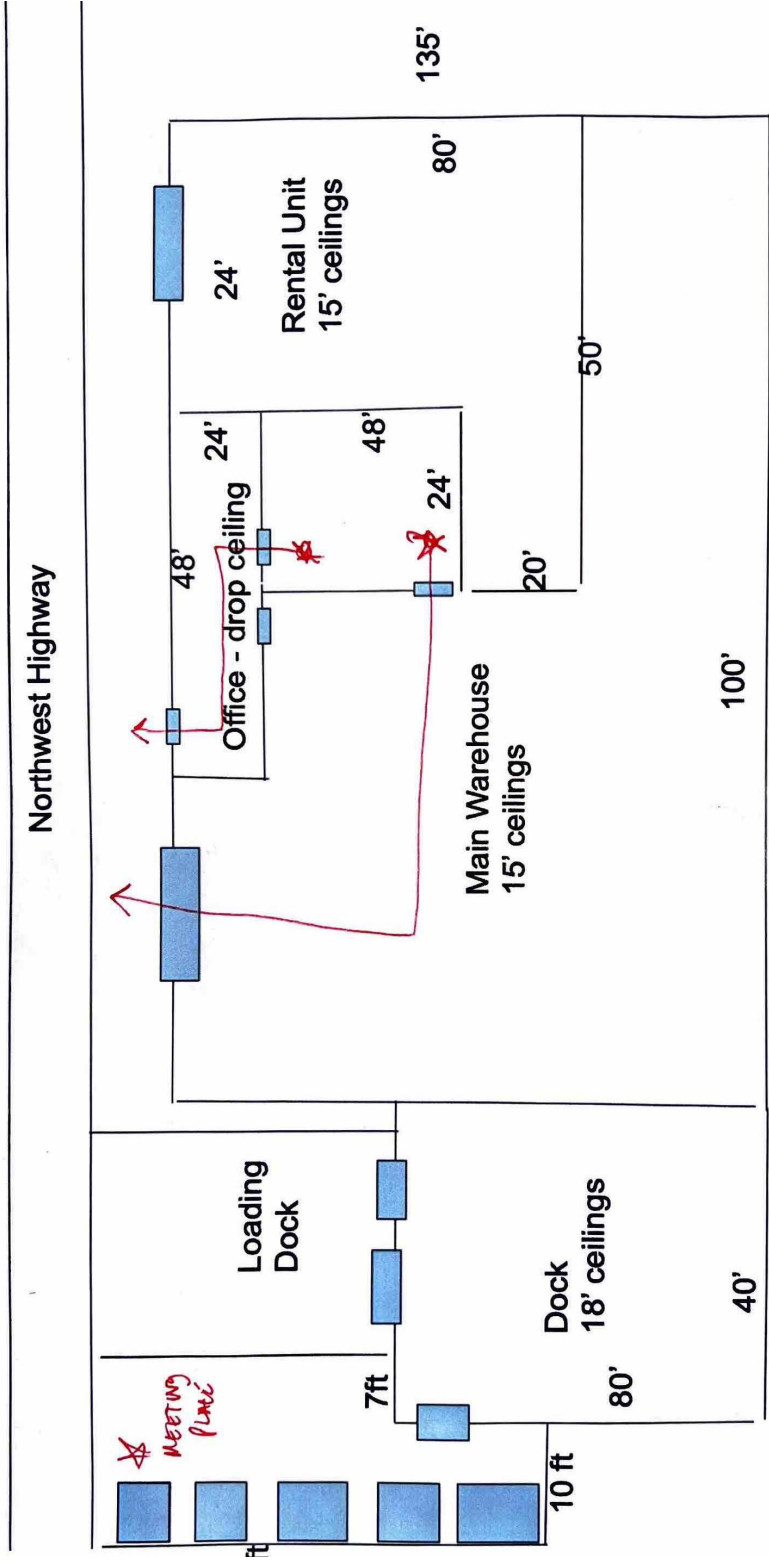
CHICAGO INDUSTRIAL BUILDING WITH AMPLE LOADING AVAILABLE FOR FOR SALE

5328 N Northwest
Highway
Chicago, IL



CHICAGO INDUSTRIAL FACILITY WITH AMPLE LOADING AVAILABLE FOR FOR SALE

5328 N Northwest
Highway
Chicago, IL



Fire Exit Safety Plan