

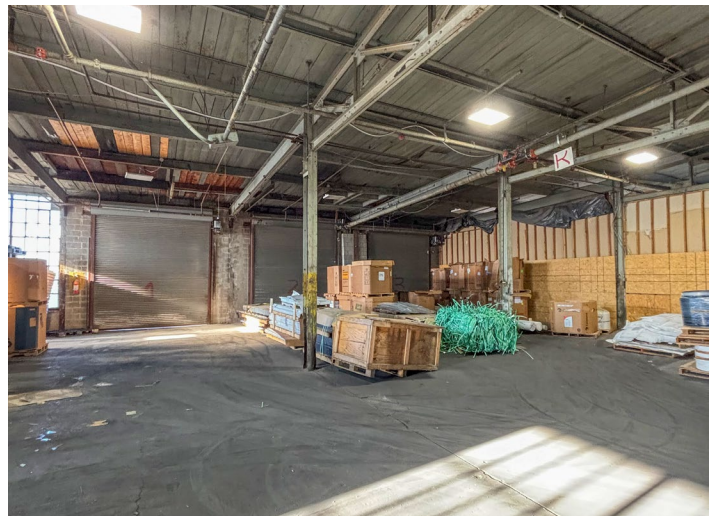
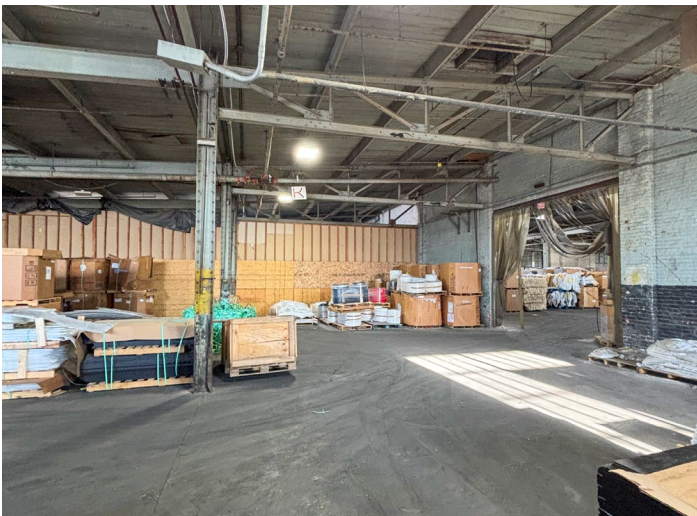
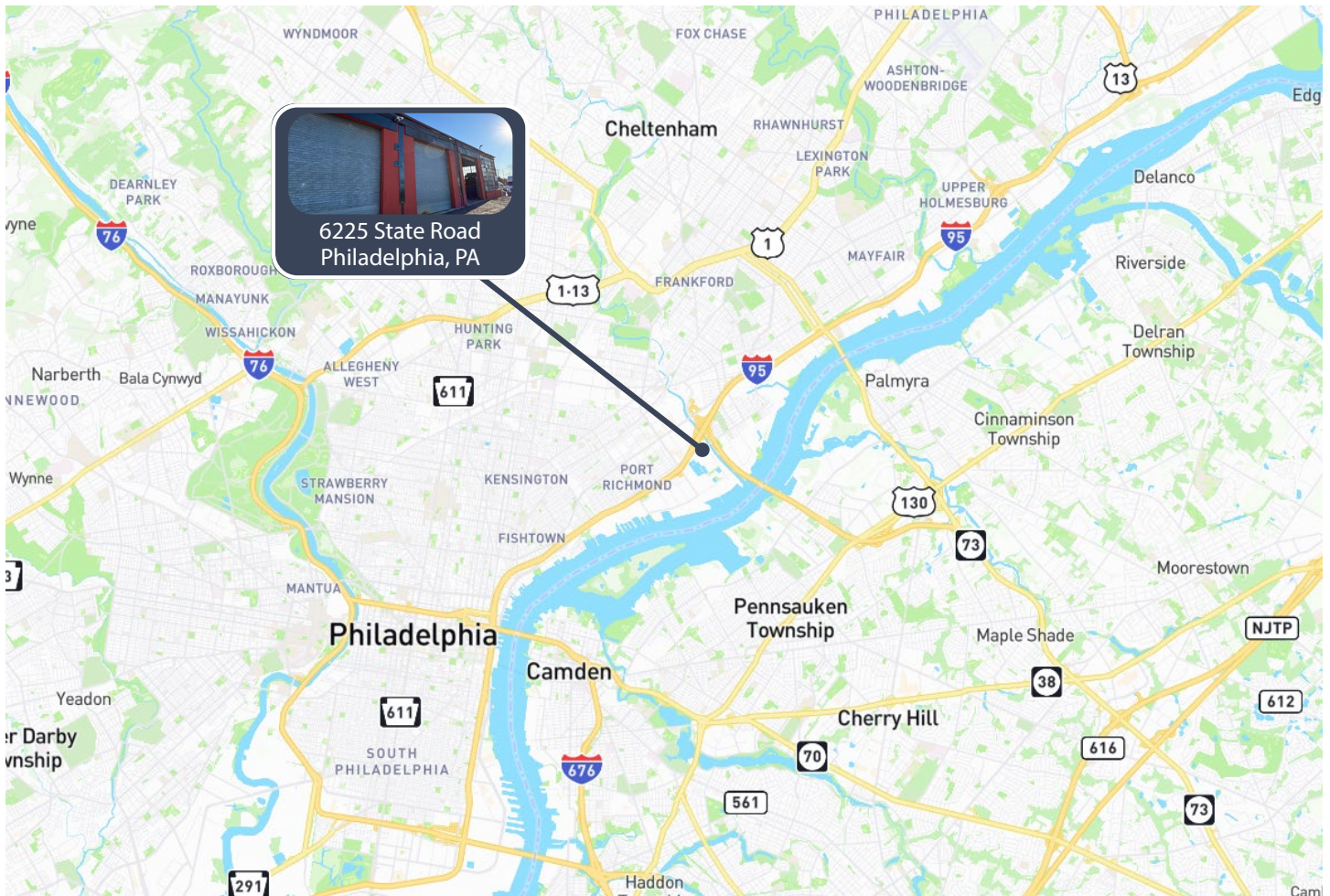


## **Industrial Warehouse Space Minutes from Major Highways** Ease of Access to I-95 and Route 73

- +/- 4,000 square feet available
- 20' clear ceiling height
- 3 drive-in doors
- Dock door access
- Term: Negotiable
- Zoning: I-2 Industrial - wide variety of uses permitted

**For further  
information**

**William Ciarlone**  
Associate  
+1 484 889 8491  
william.ciarlone@avisonyoung.com



**For further  
information**

**William Ciarlone**  
Associate  
+1 484 889 8491  
william.ciarlone@avisonyoung.com