

# UNITS AVAILABLE FOR LEASE

7151 RICHMOND ROAD, STE 201 A & B

Williamsburg, VA 23188



## PROPERTY DESCRIPTION

This Property has two side by side 1,200 sf units. They are zoned for General Business for most any business use. The location is excellent, i.e.: high traffic count, center of James City County, well maintained business park located on Richmond Road, easy access to I64. These units are full service and turn key. Richmond Road is the areas largest growth corridor, and commuter corridor. Some use allowed in this zone are: general office/administration, adult day care, medical offices. Available immediately.

## OFFERING SUMMARY

Lease Rate:	\$15.00 SF/yr (MG)
Available SF:	1,200 SF
Building Size:	2,400 SF

DEMOGRAPHICS	5 MILES	10 MILES	15 MILES
Total Households	16,235	44,066	61,531
Total Population	39,185	111,355	156,108
Average HH Income	\$113,891	\$123,099	\$121,468

**Douglas Kendall**  
(757) 803-0836



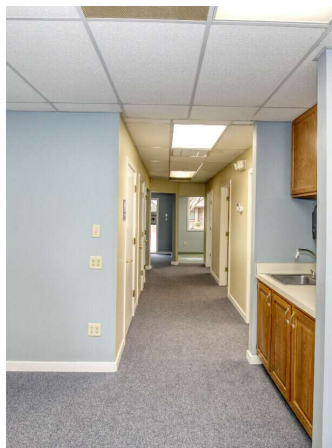
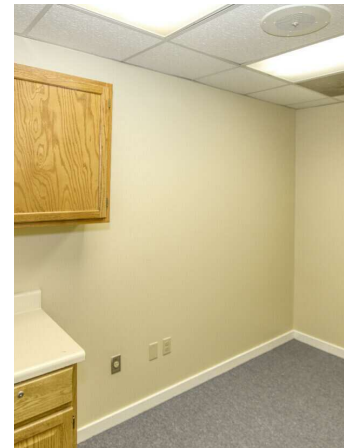
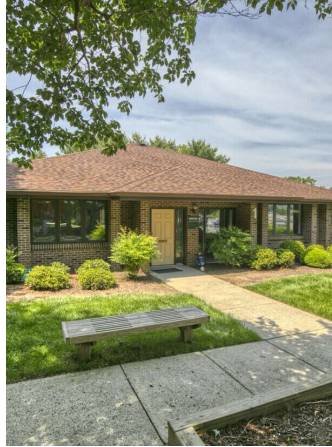
**COLDWELL BANKER  
COMMERCIAL**  
BROOKS REAL ESTATE



# UNITS AVAILABLE FOR LEASE

7151 RICHMOND ROAD, STE 101 & 102

Williamsburg, VA 23188



**Douglas Kendall**  
(757) 803-0836

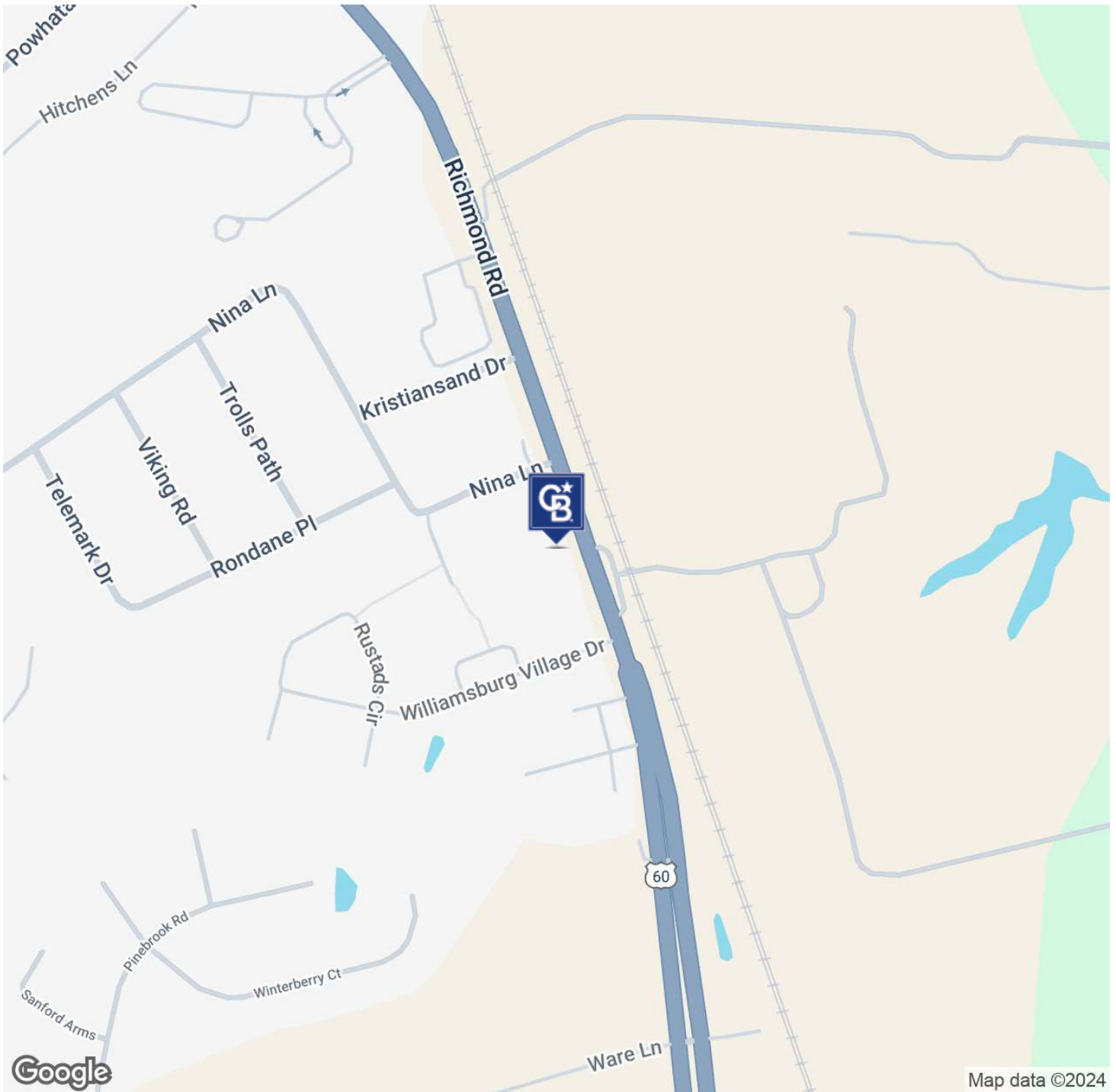


**COLDWELL BANKER  
COMMERCIAL**  
BROOKS REAL ESTATE

# UNITS AVAILABLE FOR LEASE

7151 RICHMOND ROAD, STE 201 A & B

Williamsburg, VA 23188



**Douglas Kendall**  
(757) 803-0836



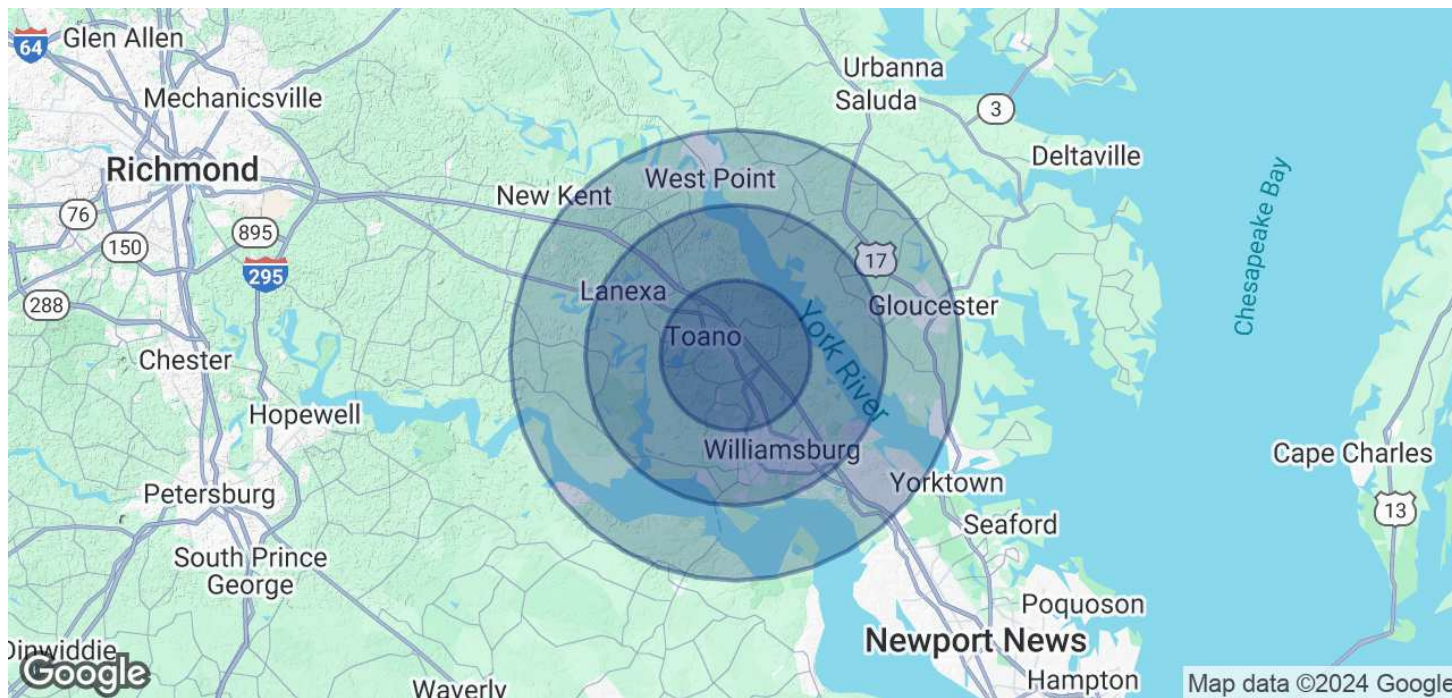
**COLDWELL BANKER  
COMMERCIAL**  
BROOKS REAL ESTATE



# UNITS AVAILABLE FOR LEASE

7151 RICHMOND ROAD, STE 201 A & B

Williamsburg, VA 23188



<b>POPULATION</b>	<b>5 MILES</b>	<b>10 MILES</b>	<b>15 MILES</b>
Total Population	39,185	111,355	156,108
Average Age	46	45	44
<b>HOUSEHOLDS &amp; INCOME</b>	<b>5 MILES</b>	<b>10 MILES</b>	<b>15 MILES</b>
Total Households	16,235	44,066	61,531
# of Persons per HH	2.4	2.5	2.5
Average HH Income	\$113,891	\$123,099	\$121,468
Average House Value	\$459,798	\$494,287	\$462,255

Demographics data derived from AlphaMap

**Douglas Kendall**  
(757) 803-0836



**COLDWELL BANKER  
COMMERCIAL**  
BROOKS REAL ESTATE