



# 4 SIXTH STREET GRIFFIN, GA 30223

**For Sale**  
**10± Acres Development Opportunity**

**BRIAN BRATTON, SIOR**  
*Senior Vice President*  
404.942.2028  
bbratton@kingindustrial.com

**STEVE RATCHFORD, SIOR, CCIM**  
*Senior Vice President*  
404.942.2003  
sratchford@kingindustrial.com

**King** Industrial  
Realty, Inc.

Industrial • Commercial • Investment  
404.942.2000 | [kingindustrial.com](http://kingindustrial.com)



## PROPERTY HIGHLIGHTS

- FEDERAL OPPORTUNITY ZONE
- Prime 10± Acre Master Planned Opportunity
- Double Frontage & Corner Lot Access
- Strategically Located Near Major Corridors
- High Demand Growth Pocket
- 8.7± Miles to I-75 via GA 16
- 1± Miles to the New Griffin-Spalding Regional Airport
- 33.5± Miles to Hartsfield Jackson Airport

### BRIAN BRATTON, SIOR

Senior Vice President

404.942.2028

bbratton@kingindustrial.com

### STEVE RATCHFORD, SIOR, CCIM

Senior Vice President

404.942.2003

sratchford@kingindustrial.com

Every effort has been made to provide accurate information, but no liability is assumed for errors or omissions.



Industrial • Commercial • Investment  
404.942.2000 | kingindustrial.com

# City of Griffin



**SUBJECT PROPERTY:  
4 Sixth Street**

**BRIAN BRATTON, SIOR**

Senior Vice President

404.942.2028

bbratton@kingindustrial.com

**STEVE RATCHFORD, SIOR, CCIM**

Senior Vice President

404.942.2003

sratchford@kingindustrial.com



Industrial • Commercial • Investment  
404.942.2000 | kingindustrial.com

# EAST GRIFFIN MILL VILLAGE OVERLAY



**Legend**

- East Griffin Mill Village Overlay
- County Parcels

**BRIAN BRATTON, SIOR**  
Senior Vice President  
404.942.2028  
bbratton@kingindustrial.com

**STEVE RATCHFORD, SIOR, CCIM**  
Senior Vice President  
404.942.2003  
sratchford@kingindustrial.com

**King** Industrial Realty, Inc. **CORFAC** INTERNATIONAL  
Industrial • Commercial • Investment  
404.942.2000 | kingindustrial.com

Every effort has been made to provide accurate information, but no liability is assumed for errors or omissions.



**BRIAN BRATTON, SIOR**

Senior Vice President

404.942.2028

bbratton@kingindustrial.com

**STEVE RATCHFORD, SIOR, CCIM**

Senior Vice President

404.942.2003

sratchford@kingindustrial.com



Industrial • Commercial • Investment  
404.942.2000 | kingindustrial.com

## New Griffin-Spalding Regional Airport

### BRIAN BRATTON, SIOR

Senior Vice President

404.942.2028

bbratton@kingindustrial.com

### STEVE RATCHFORD, SIOR, CCIM

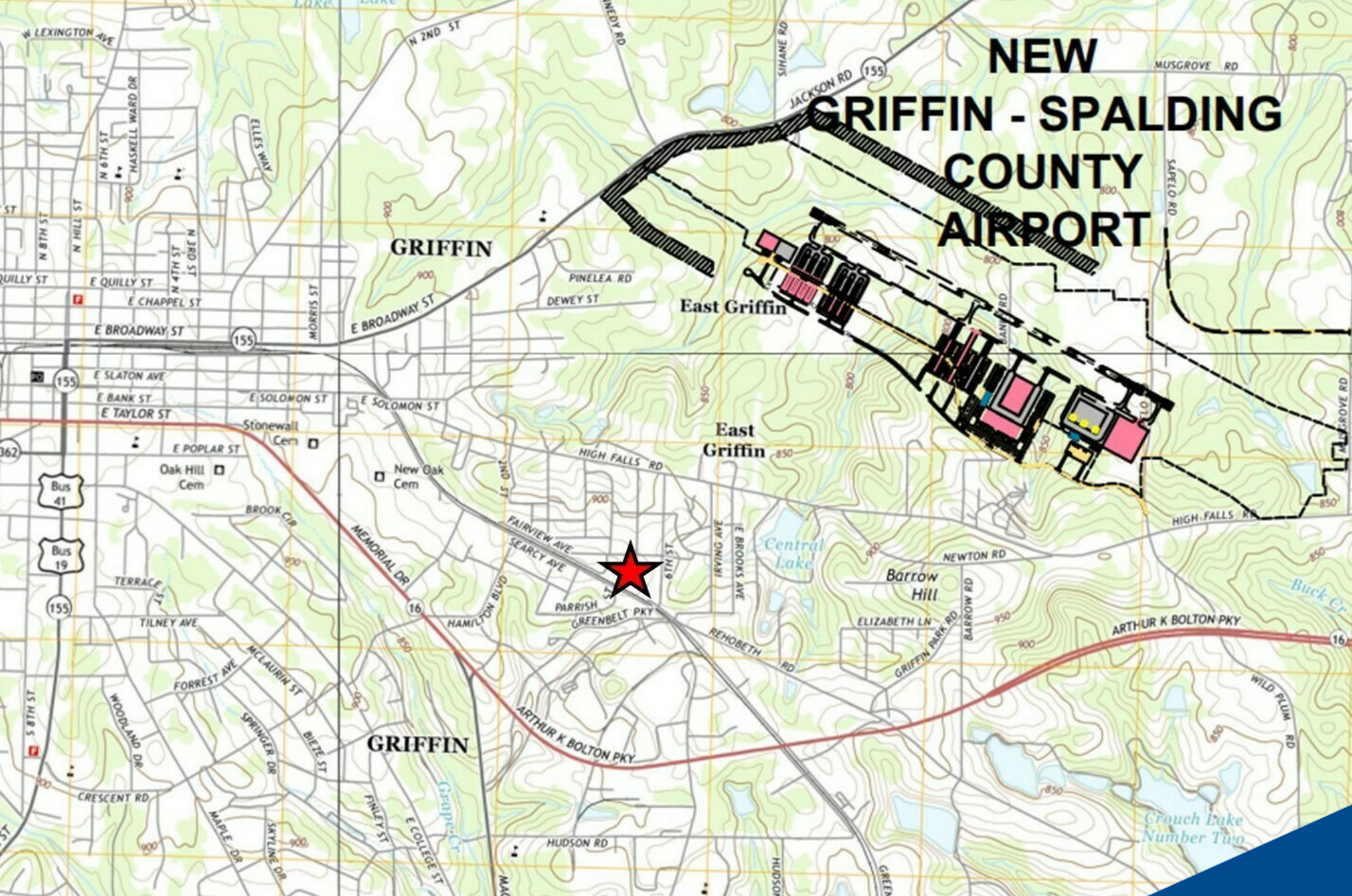
Senior Vice President

404.942.2003

sratchford@kingindustrial.com



Industrial • Commercial • Investment  
404.942.2000 | kingindustrial.com



# NEW GRIFFIN - SPALDING COUNTY AIRPORT

**BRIAN BRATTON, SIOR**

Senior Vice President

404.942.2028

bbratton@kingindustrial.com

**STEVE RATCHFORD, SIOR, CCIM**

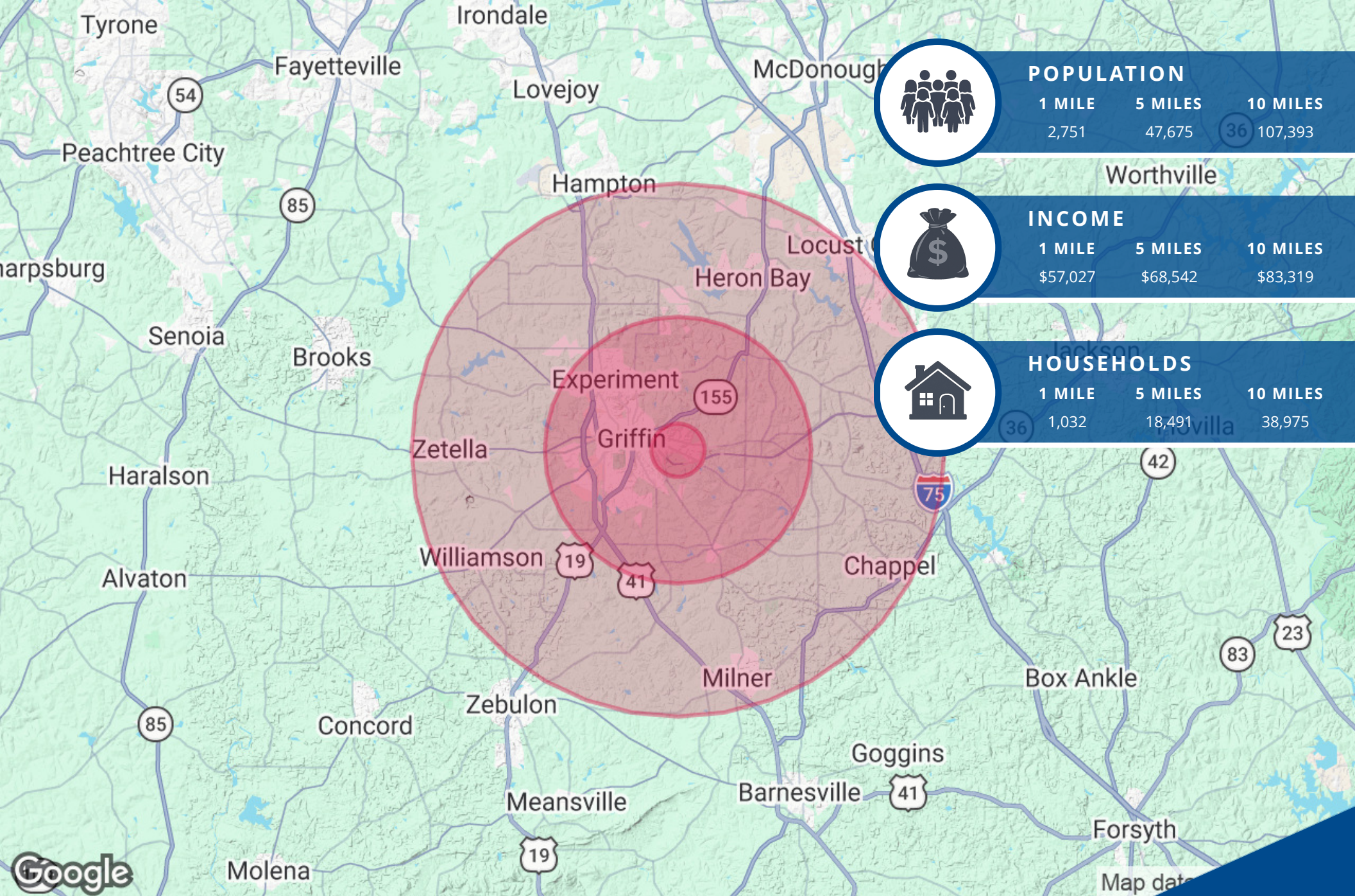
Senior Vice President

404.942.2003

sratchford@kingindustrial.com



Industrial • Commercial • Investment  
404.942.2000 | kingindustrial.com



**BRIAN BRATTON, SIOR**

Senior Vice President

404.942.2028

bbratton@kingindustrial.com

**STEVE RATCHFORD, SIOR, CCIM**

Senior Vice President

404.942.2003

sratchford@kingindustrial.com



Industrial • Commercial • Investment  
404.942.2000 | kingindustrial.com

EXCLUSIVELY LISTED BY:

**BRIAN BRATTON, SIOR**

*Senior Vice President*  
bbratton@kingindustrial.com  
404.942.2028

**STEVE RATCHFORD, SIOR, CCIM**

*Senior Vice President*  
sratchford@kingindustrial.com  
404.942.2003

**King** Industrial  
Realty, Inc.

Industrial • Commercial • Investment  
404.942.2000 | kingindustrial.com