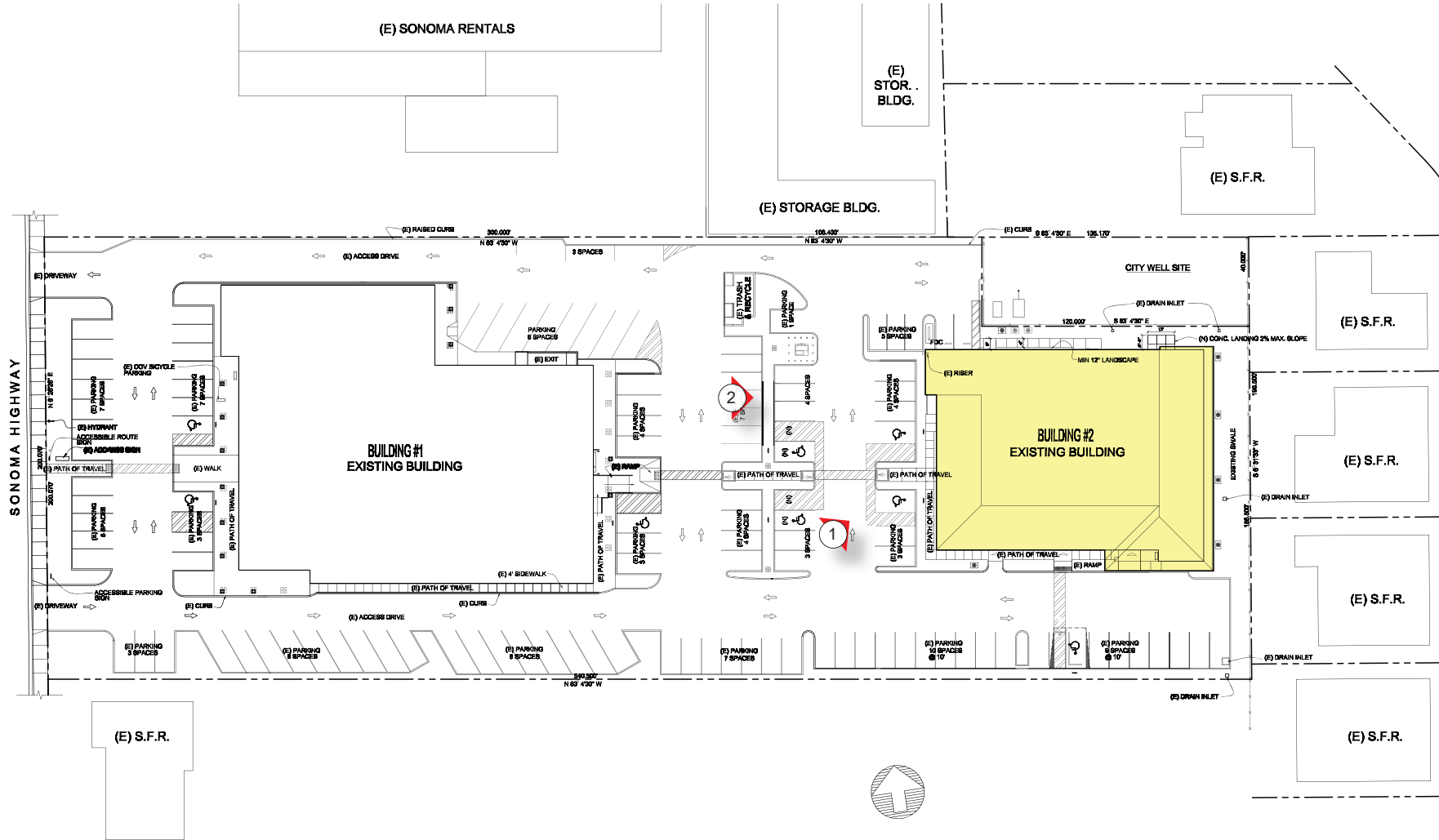
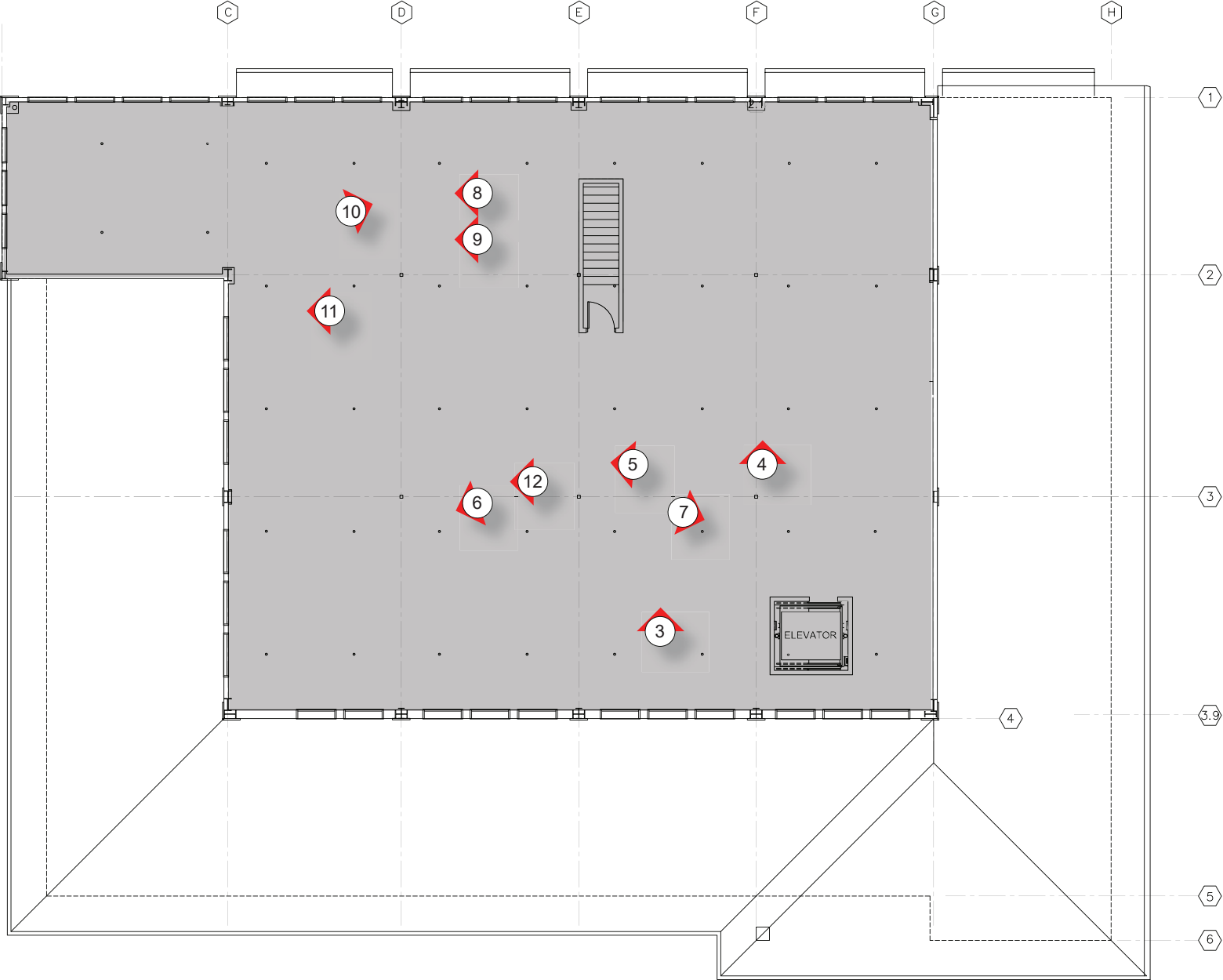
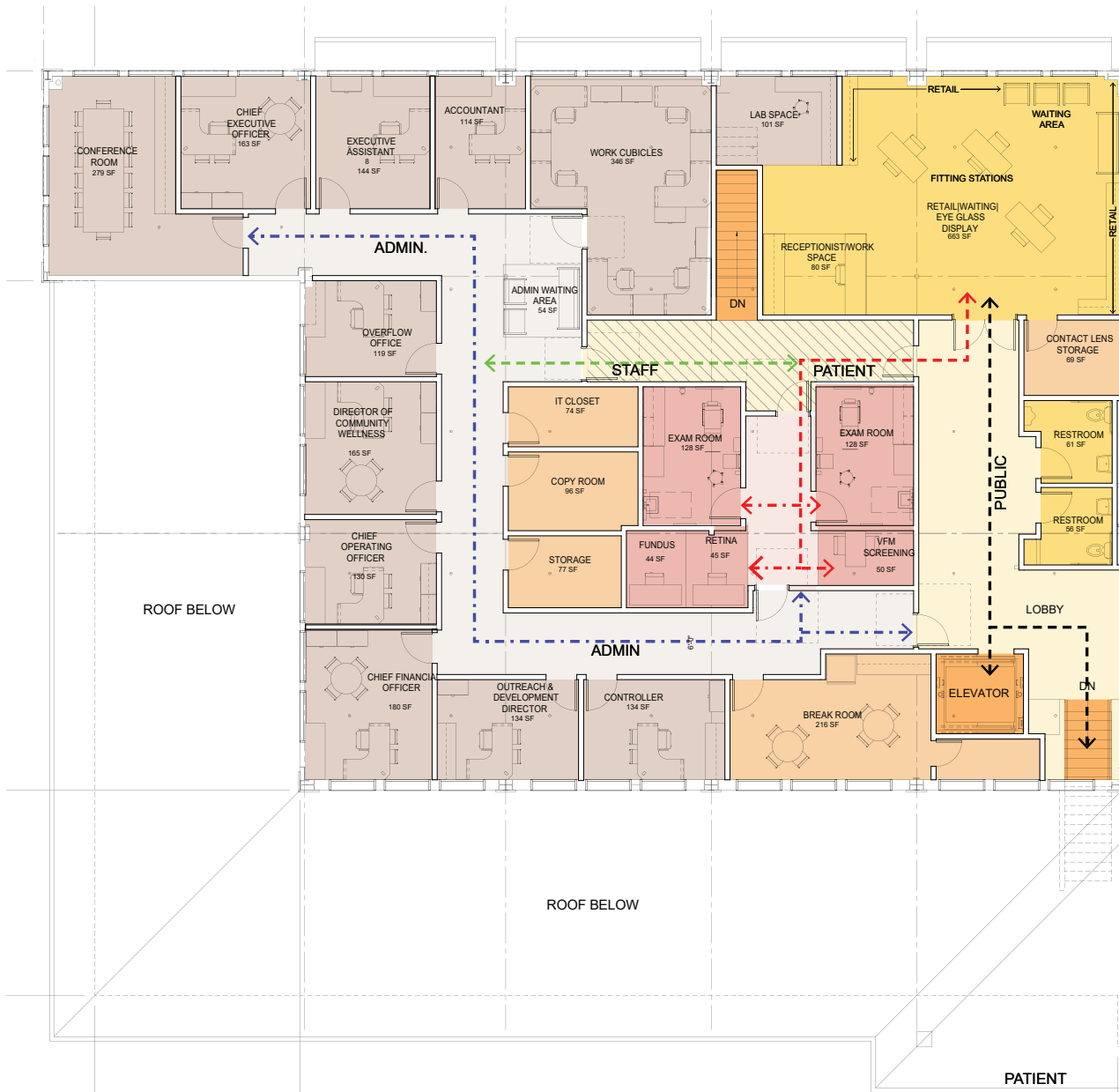


EXISTING CONDITIONS



EXISTING CONDITIONS





- | | | | |
|--|-----------------------|--|-----------------------------|
| | PUBLIC SPACE & RETAIL | | PUBLIC CIRCULATION |
| | ADMINISTRATIVE STAFF | | PATIENT & STAFF CIRCULATION |
| | VERTICAL CIRCULATION | | ADMINISTRATIVE CIRCULATION |
| | EXAM ROOMS TESTING | | |
| | SUPPORT | | |

- ← - - - - - → PUBLIC CIRCULATION
- ← - - - - - → PATIENT CIRCULATION
- ← - - - - - → ADMINISTRATIVE CIRCULATION
- ← - - - - - → STAFF CIRCULATION

The floor plan is designed to maintain a dedicated corridor access to the existing egress stairs and to plan the administrative and optometry suites from that corridor. The administrative suite resides at the west side of the space with the optometry suite at eastern and central locations. The retail space is directly accessible from the main lobby. Patient exam and testing are external of the retail space and away from exterior windows. Public, patient, staff, and administrative circulation are mostly separated with minimal overlap.