

# RETAIL SPACE FOR LEASE

485 MARIN BLVD. • JERSEY CITY

## DETAILS

**SIZE:** BETWEEN 1,266 SF - 1,528 SF

**FRONTAGE:** UP TO 80 FT

**ASKING RENT:** UPON REQUEST

**LEASE TYPE:** NNN

**POSSESSION:** IMMEDIATE



## PROPERTY HIGHLIGHTS

Prime **corner** location in Jersey City's **Hamilton Park** neighborhood

Anchored by an **18-story** luxury building with 397 high-end rental units

Across from **Newport Mall** with 131 stores

Excellent visibility with **12,000 cars** per day and up to 80 FT of frontage

Easy access to **PATH** and **Light Rail**

Robust demographics with growing population (18% increase since 2010)



**TOM DONOVAN**

Principal

M: 917.796.7381

[tdonovan@donovanrealtgroup.com](mailto:tdonovan@donovanrealtgroup.com)

**201 Montgomery St #263**

**Jersey City, NJ 07302**

**201.451.5054**

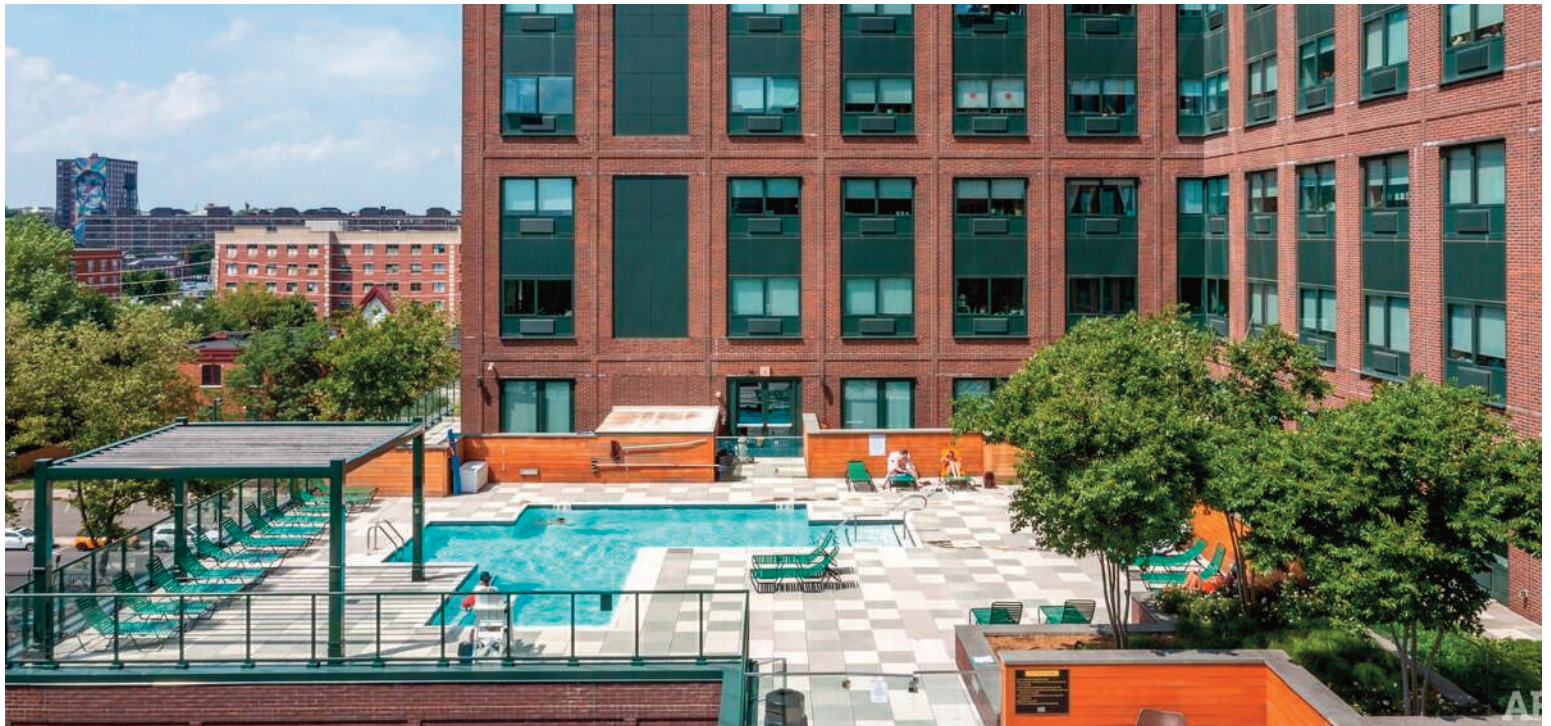
**[donovanrealtgroup.com](http://donovanrealtgroup.com)**

This information has been secured from sources we believe to be reliable, but we make no representations as to the accuracy of the information. References to square footage are approximate. Tenant must verify the information and bears all risk for any inaccuracies.



# RETAIL SPACE FOR LEASE

485 MARIN BLVD. • JERSEY CITY



**DONOVAN**  
REALTY & DEVELOPMENT, INC.

**TOM DONOVAN**

Principal

M: 917.796.7381

[tdonovan@donovanrealtgroup.com](mailto:tdonovan@donovanrealtgroup.com)

201 Montgomery St #263

Jersey City, NJ 07302

201.451.5054

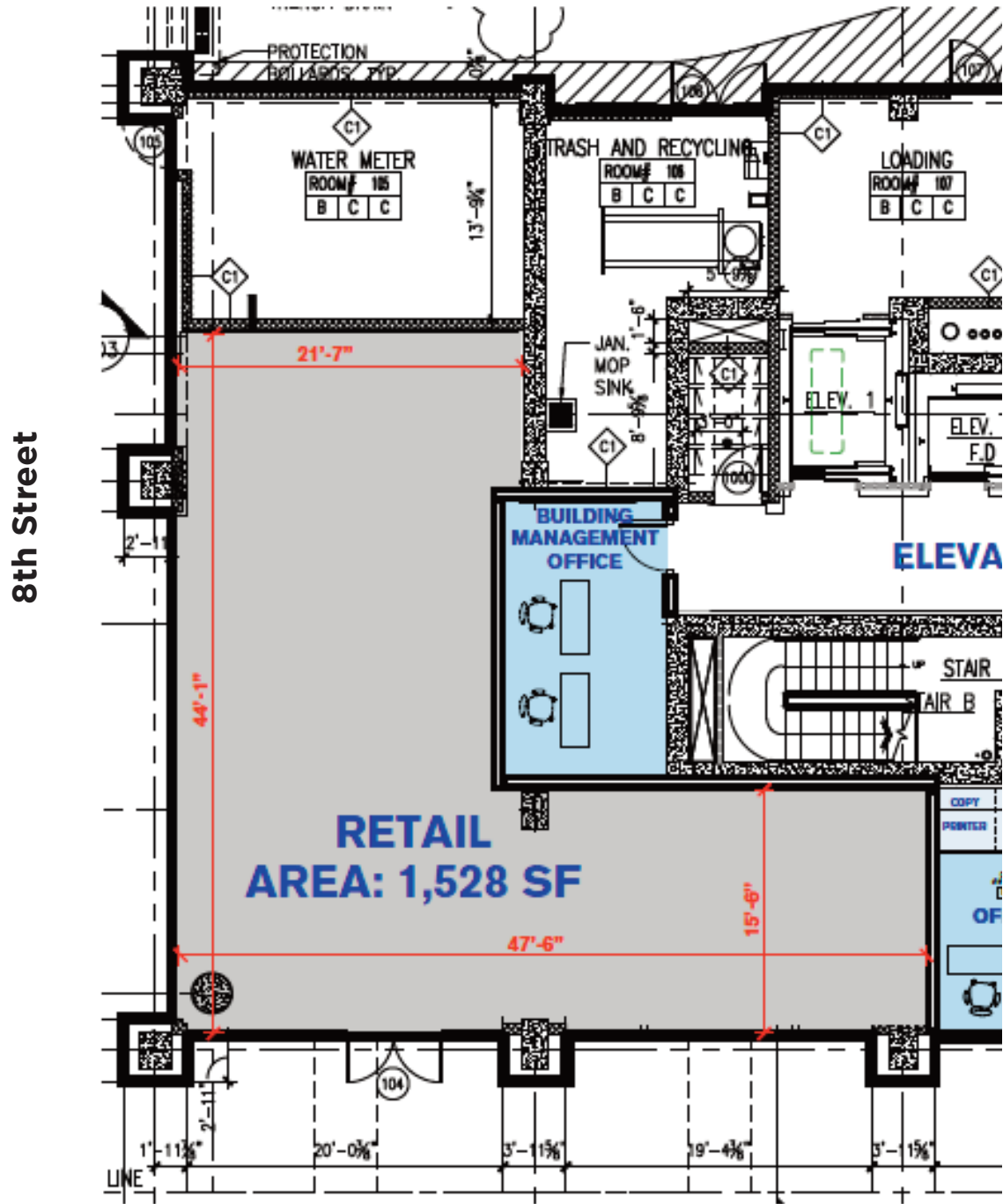
[donovanrealtgroup.com](http://donovanrealtgroup.com)

This information has been secured from sources we believe to be reliable, but we make no representations as to the accuracy of the information. References to square footage are approximate. Tenant must verify the information and bears all risk for any inaccuracies.



# RETAIL SPACE FOR LEASE

485 MARIN BLVD. • JERSEY CITY



**DONOVAN**  
REALTY & DEVELOPMENT, INC.

**TOM DONOVAN**

Principal

M: 917.796.7381

[tdonovan@donovanrealttygroup.com](mailto:tdonovan@donovanrealttygroup.com)

201 Montgomery St #263

Jersey City, NJ 07302

201.451.5054

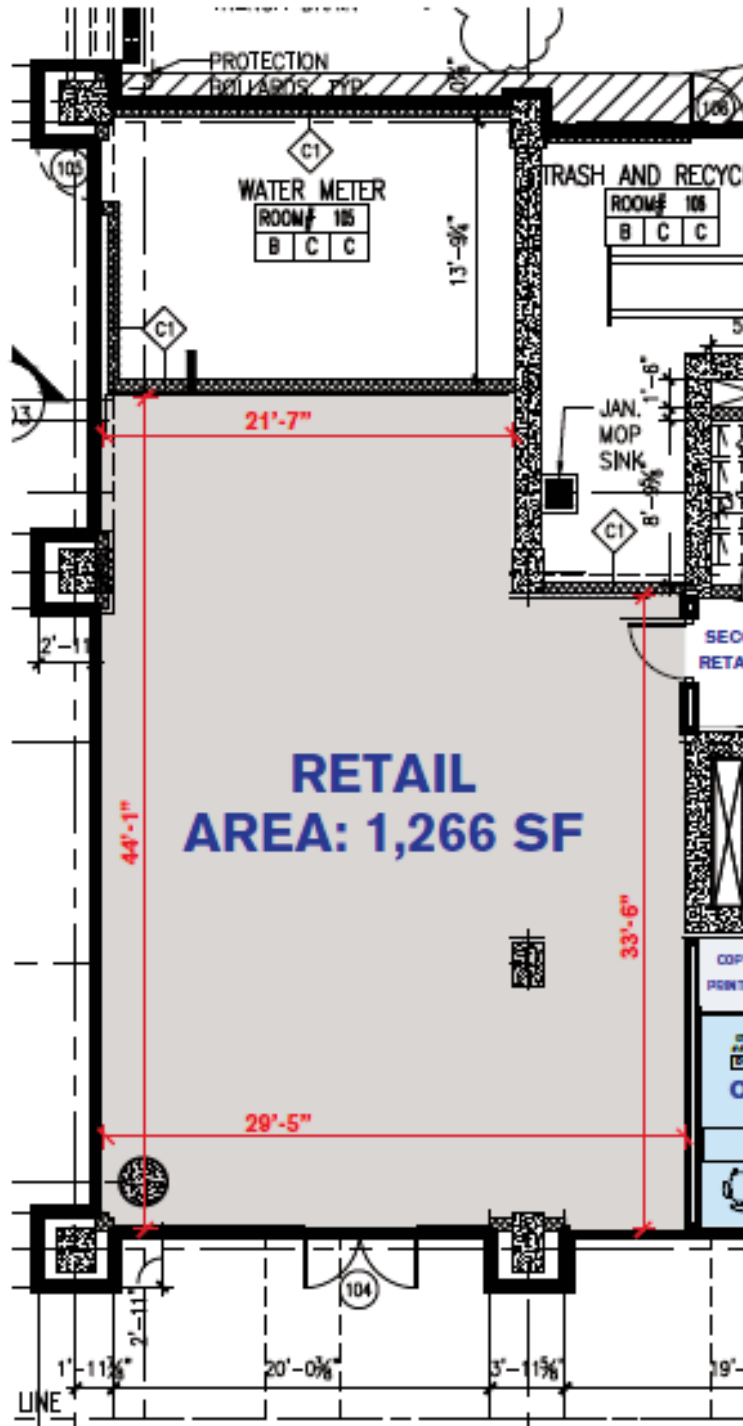
[donovanrealttygroup.com](http://donovanrealttygroup.com)

This information has been secured from sources we believe to be reliable, but we make no representations as to the accuracy of the information. References to square footage are approximate. Tenant must verify the information and bears all risk for any inaccuracies.

# RETAIL SPACE FOR LEASE

485 MARIN BLVD. • JERSEY CITY

8th Street



**TOM DONOVAN**

Principal

M: 917.796.7381

[tdonovan@donovanrealtygroup.com](mailto:tdonovan@donovanrealtygroup.com)

201 Montgomery St #263

Jersey City, NJ 07302

201.451.5054

[donovanrealtygroup.com](http://donovanrealtygroup.com)

This information has been secured from sources we believe to be reliable, but we make no representations as to the accuracy of the information. References to square footage are approximate. Tenant must verify the information and bears all risk for any inaccuracies.