

FOR LEASE



908 PARK STREET, REGINA, SK



OVERVIEW

The Building has recently undergone various exterior upgrades making this high-traffic destination a great home for your business. Traffic counts of over 17,000 vehicles per day along Park Street. Ideal for food, office and service type businesses.

PROPERTY PROFILE

BUILDING SIZE

±30,872 SF

AVAILABLE SPACE

±2,630 SF - ±5,260 SF

LEASE RATE

\$12.75 PSF

OCCUPANCY COSTS

\$5.48 PSF

LAND SIZE

1.6 acres

LEGAL DESCRIPTION

Lot D, Block 3, Plan 67R35362
Surface parcel 107129246

ZONING

IH

POSSESSION

Immediate

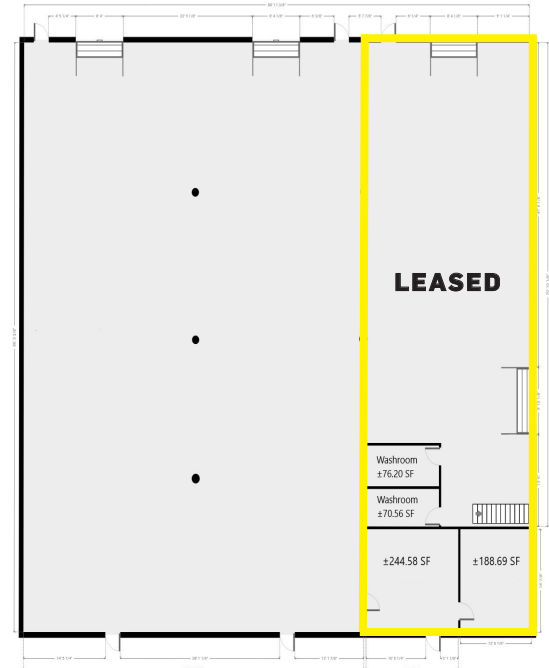
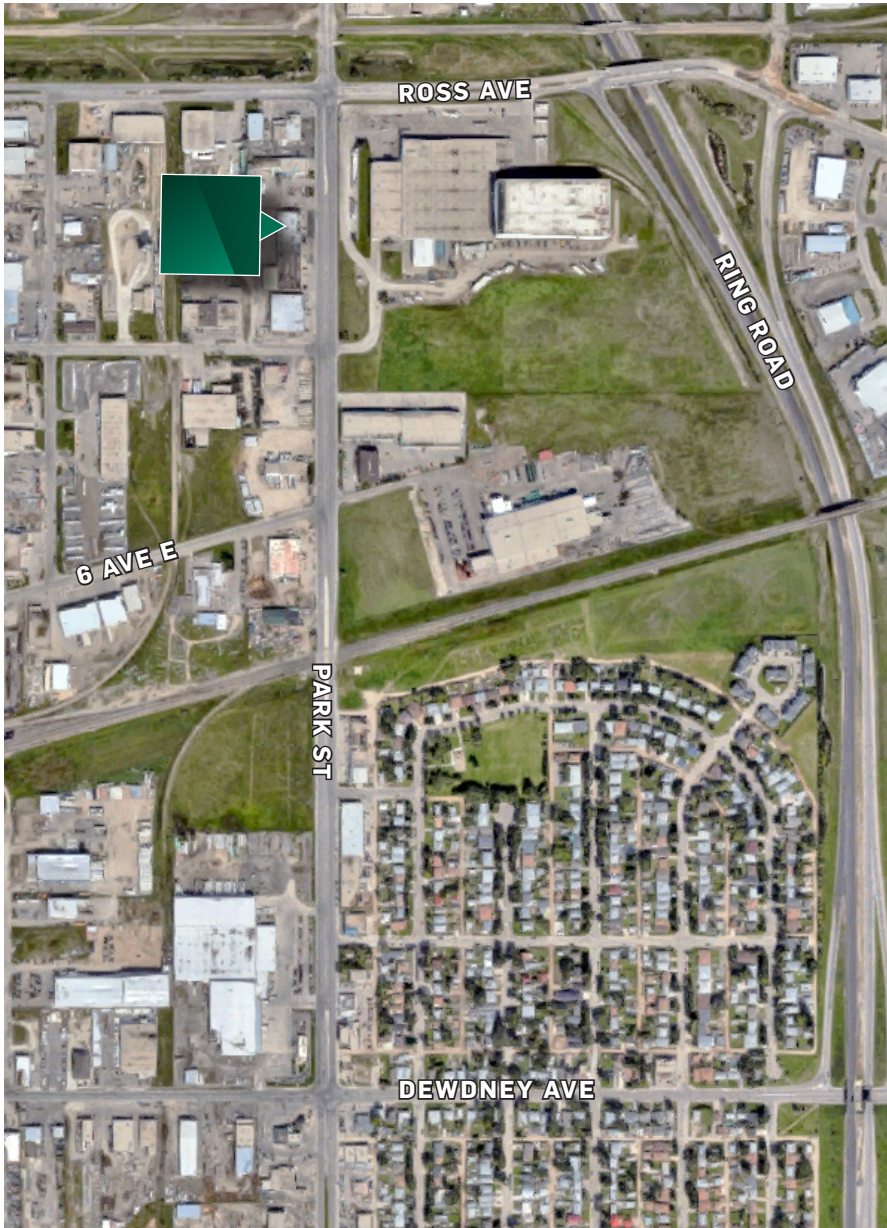
BUILDING DETAILS

- Dock loading for cubes & small trucks at rear of building.
- New facade.
- Various bay sizes.
- Tenant Improvement Allowance offered on 5 year deals with qualified tenants.

■ TRUST US TO PUT YOU ON THE MAP

ICRCOMMERCIAL.COM

908 PARK ST



THIS INFORMATION HAS BEEN SECURED FROM SOURCES THAT ICR COMMERCIAL REAL ESTATE BELIEVES TO BE RELIABLE, BUT WE MAKE NO REPRESENTATION OR WARRANTIES – EXPRESSED OR IMPLIED – AS TO THE ACCURACY OF INFORMATION. JAY E.I DAWSON M. | APRIL 2022

**SALES & LEASING
PROPERTY MANAGEMENT**
200 – 1055 PARK ST
REGINA, SK S4N 5H4
P: 306.721.6116
F: 306.721.1940

**SALES & LEASING
DOWNTOWN**
275 1ST AVENUE N
SASKATOON, SK S7K 1X2
P: 306.664.6116
F: 306.664.1940

**SALES & LEASING
NORTH**
840 48TH STREET E
SASKATOON, SK S7K 3Y4
P: 306.933.2929
F: 306.931.0882

**PROPERTY MANAGEMENT
DOWNTOWN**
100 – 261 1ST AVENUE N
SASKATOON, SK S7K 1X2
P: 306.664.6118
F: 306.664.1940

■ TRUST US TO PUT YOU ON THE MAP

ICRCOMMERCIAL.COM