



Spring Valley Village

Washington, DC

375 - 2,578 SF available



Washington

District of Columbia

- Trophy shopping center located in Washington, D.C.
- In close proximity to American University with 14,800 students
- Fully leased center with a carefully curated blend of daily essentials, top-tier dining options, and vital medical services, catering to diverse needs within a vibrant community
- Introducing a 214-unit mixed-use development, conveniently located across the street
- Introducing one of Northwest DC
- 450 feet of frontage and two signalized intersections along Massachusetts Ave, a bustling commuter thoroughfare



2026 Demographics

	0.25 mi.	0.5 mi.	1 mi.
Population	11,163	4,980	20,837
Daytime Population	207	3,564	10,255
Household Income	\$309,958	\$377,226	\$321,606
Traffic Counts	19,599 on Massachusetts Ave NW		

Area Retailers







Site Plan

3,065 SF available

Space #	Sq. Ft.	Tenant
4300-100	1,123	Modern Settlement
4301	3,221	Small Door Veterinary
4325-200	3,065	Available
4820	48,000	Crate & Barrel
4850	2,878	Compass Coffee
4850-100	3,630	Pizzeria Paradiso
4850-200	7,270	Spring Valley Pediatrics
4860	3,534	Capital One
4866	2,864	Millie's
4872	3,863	Bluestone Lane
4874	3,863	Bluestone Lane

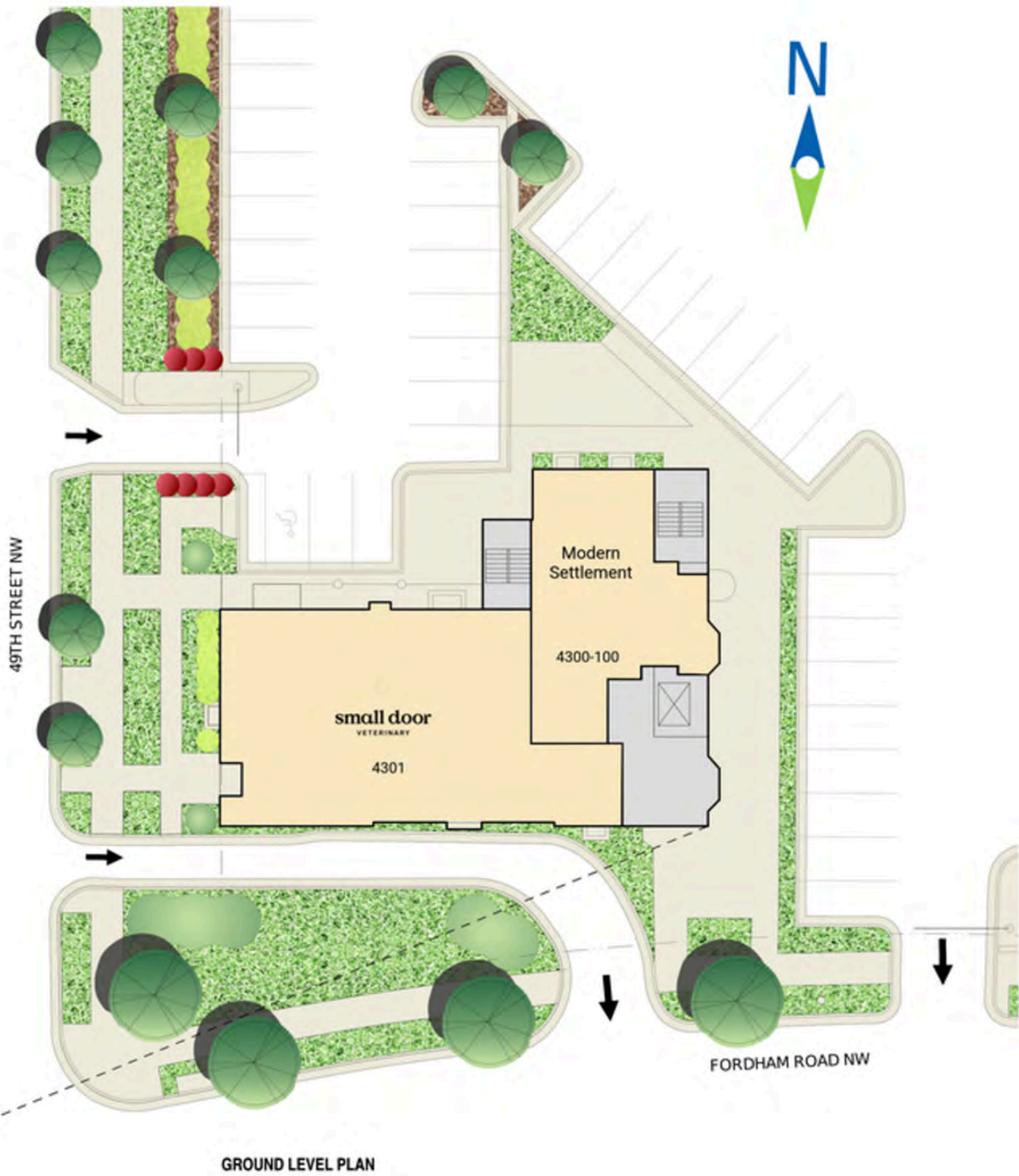
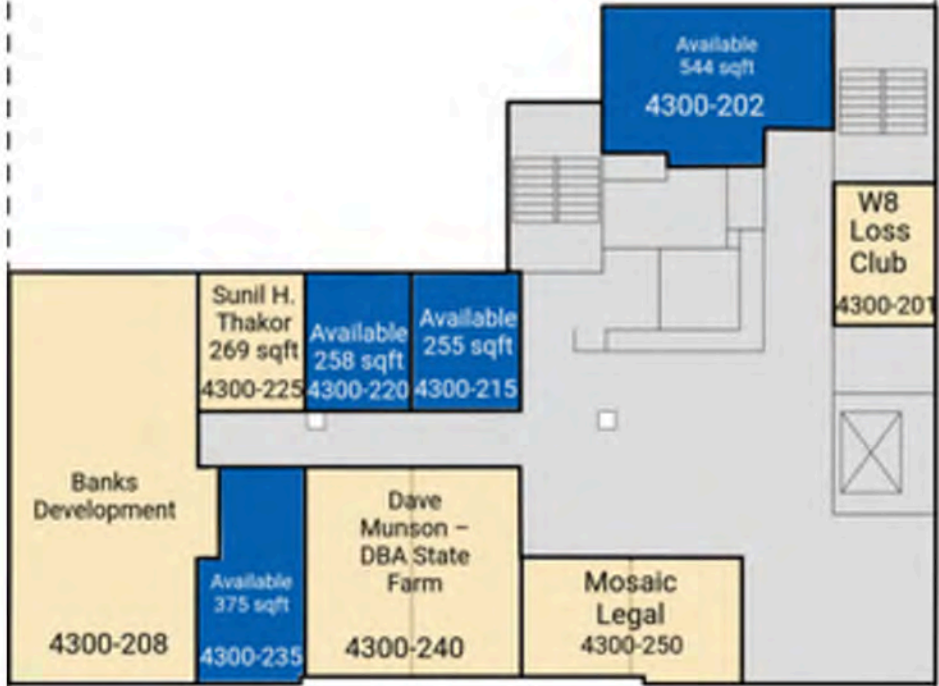
● Space Available



Office Site Plan

255 - 2,578 SF available

● Space Available



Tenant List

Space #	Sq. Ft.	Tenant
4300-100	1,123	Modern Settlement
4300-201	330	W8 Loss Club
4300-202	544	Available
4300-208	1,206	Banks Development
4300-215	255	Available

Space #	Sq. Ft.	Tenant
4300-220	258	Available
4300-225	269	Sunil H. Thakor
4300-235	375	Available
4300-240	715	Dave Munson – DBA State Farm
4300-250	455	Mosaic Legal

Space #	Sq. Ft.	Tenant
4300-305	3,545	Alcaper, LLC
4301	3,221	Small Door Veterinary
4302 LL	2,578	Available

The Property



Discover your next retail opportunity at
rappaportco.com



WASHINGTON, D.C. | MARYLAND | VIRGINIA

SPRING VALLEY VILLAGE | 4820 - 4872 MASSACHUSETTS AVENUE, WASHINGTON, DC

Bill Dickinson | bdickinson@rappaportco.com | 703.310.6983

Emily Whalen | ewhalen@rappaportco.com | 860.906.2413