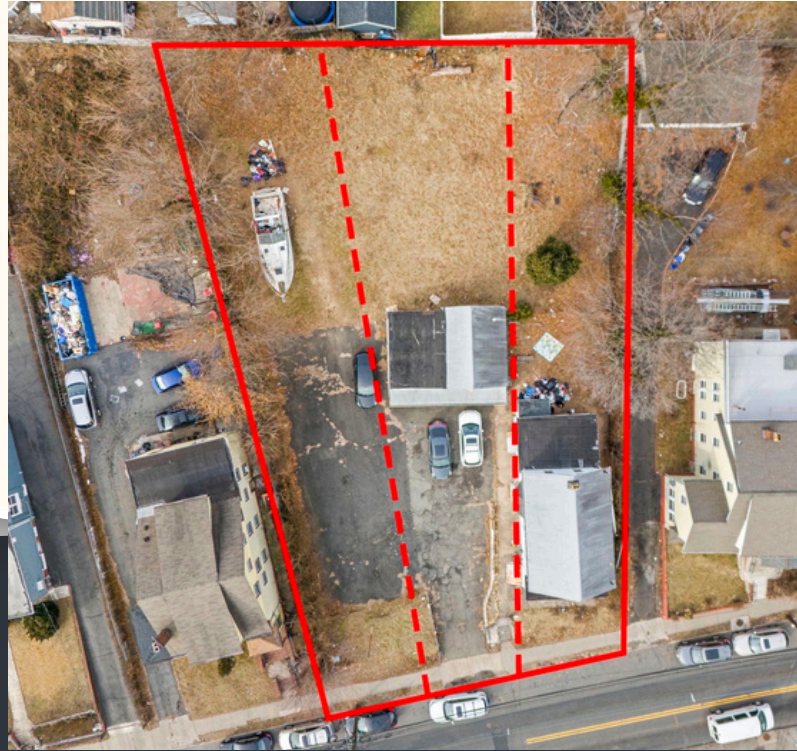
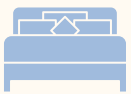


# Just Listed!

153-157 STUYVESANT AVE, NEWARK, NJ



## PROPERTY HIGHLIGHTS



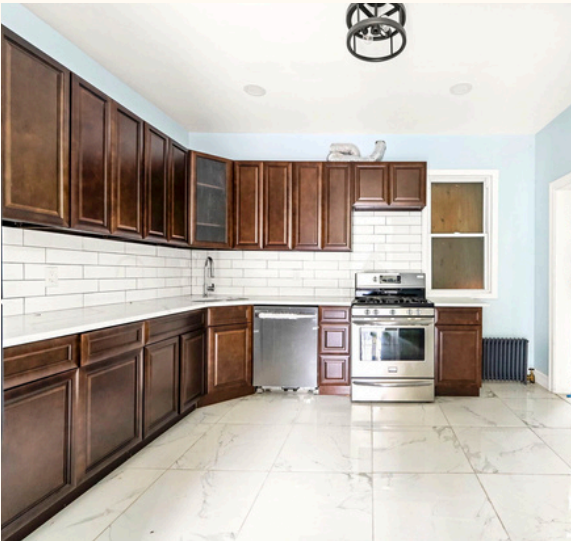
5 BEDROOMS



2 BATHROOMS



3 CAR GARAGE



ASKING \$899,000

## PROPERTY SUMMARY

ZONING	R-2 RESIDENTIAL 1-3 FAMILY (PER LOT)
LOT SIZE	81 X 170 & 120 X 170
LOT SQ FT	13,786 SQFT
LOT ACREAGE	0.3165 ACRES
LOT   BLOCK	63   4107
FRONTAGE	25'
POWER	200 AMPS- 240 VOLTS
TAXES	\$5,081



Scan to see more!



LAUREN SOSA- HERRERA

LSosaHerrera@KW.com

LSosaHerrera.KW.com

(551) 655-1904



# RECENT DEVELOPMENTS IN THE AREA HIGHLIGHTING PRECEDENTS FOR BUILDING BEYOND STANDARD APPROVED ZONES

## 71 - 75 Stuyvesant Ave, Newark, NJ



Each new 2-family home features a **3BR/3BTH (Unit 1)** and **3BR/2BTH (Unit 2)**, gourmet kitchens, luxury primary suites, and 2 attached garages.

**Lot size 25 x 100 each**

**Currently listed for \$939,000 each**

## 129 - 131 Stuyvesant Ave, Newark, NJ



This property features **4 units**, each with 2 bedrooms and 1 bath. It includes 8 bedrooms, 4 full bathrooms, and a driveway with 4 tandem parking spots.

**Lot Size 51 x 97**

## 133 - 139 Stuyvesant Ave, Newark, NJ



3 story apartment building with **23 units** and an approximate 13 spot attached parking lot.

**Lot Size 102 x 113**