



2460 EXECUTIVE DRIVE  
EAST TROY, WI 53120

### FEATURES

Small industrial condo units available for sale or lease in East Troy. Each unit features a drive-in door and gas heater, with the option to combine certain units for additional space. Ideal for storage, contractors, or even a personal workshop/man cave. Flexible sizes and uses make this a great opportunity to own or lease industrial space.

Drive in Doors: **1 - 12'x10' Per Unit**

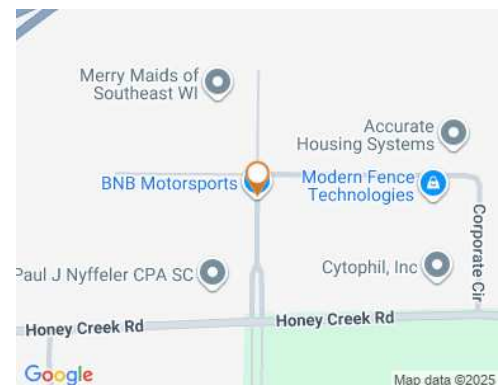
Year Built / Renovated: **2024**

Zoning: **LI - Light Industrial**

Heat: **Gas Heater**

Tax Key #: **See Attached**

Listing: **4828**



### INDUSTRIAL LEASE OR SALE

Total SF: **15,294**

Available SF: **6,352**

Min Contiguous SF: **1,273**

Max Contiguous SF: **3,809**

Sale Price: **\$199,000.00 - \$215,000.00**

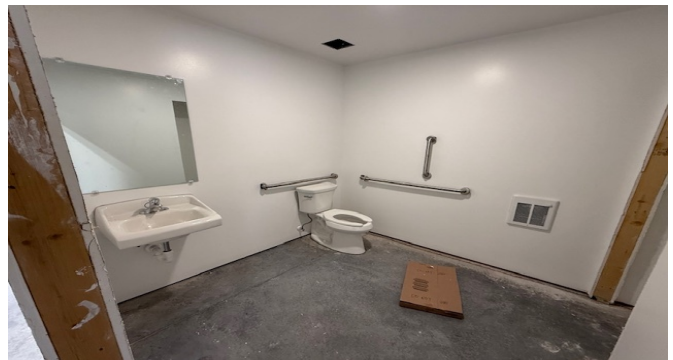
**Per Unit**

Lease Rate: **\$1,850.00 Monthly Per Unit**  
**NNN**

Colleen Geiger, Sales Agent  
262-695-8800  
cgeiger@judsonrealestate.com

Matthew Judson, President  
262-695-8800  
matt.judson@judsonrealestate.com

Judson & Associates, S.C.  
2831 N. Grandview Blvd, Suite 222  
Pewaukee, WI 53072

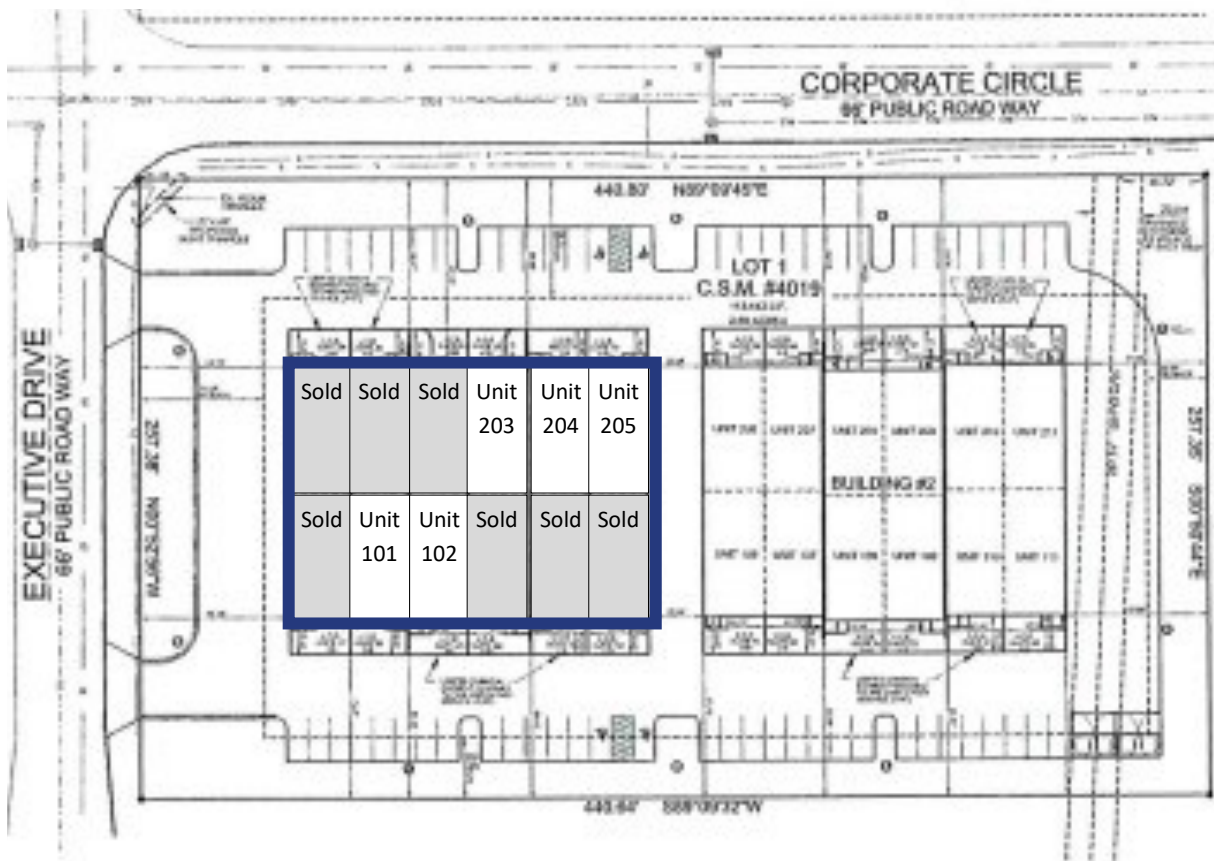


**Colleen Geiger, Sales Agent**  
262-695-8800  
cgeiger@judsonrealestate.com

**Matthew Judson, President**  
262-695-8800  
matt.judson@judsonrealestate.com

Judson & Associates, S.C.  
2831 N. Grandview Blvd, Suite 222  
Pewaukee, WI 53072

## 2460 Executive Drive, East Troy, WI



UNIT	SF	TAX KEY	FEATURES	PRICE
101	1,269 SF	RETCC00003D	One Bathroom	\$215,000
102	1,274 SF	RETCC00002C	—	\$199,000
203	1,273 SF	RETCC00002B	3 Phase Power	\$205,000
204	1,268 SF	RETCC00001A	3 Phase Power	\$215,000
205	1,268 SF	RETCC00001B	—	\$205,000

1 Prior to negotiating on your behalf the Broker must provide you the following disclosure statement:

2 **BROKER DISCLOSURE TO CUSTOMERS**

3 You are a customer of the broker. The broker is either an agent of another party in the transaction or a subagent of another broker  
4 who is the agent of another party in the transaction. The broker, or salesperson acting on behalf of the broker, may provide  
5 brokerage services to you. Whenever the broker is providing brokerage services to you, the broker owes you, the customer, the  
6 following duties:

7 ■ The duty to provide brokerage services to you fairly and honestly.

8 ■ The duty to exercise reasonable skill and care in providing brokerage services to you.

9 ■ The duty to provide you with accurate information about market conditions within a reasonable time if you request it, unless  
10 disclosure of the information is prohibited by law.

11 ■ The duty to disclose to you in writing certain material adverse facts about a property, unless disclosure of the information is  
12 prohibited by law (See Lines 47-55).

13 ■ The duty to protect your confidentiality. Unless the law requires it, the broker will not disclose your confidential information or the  
14 confidential information of other parties (See Lines 22-39).

15 ■ The duty to safeguard trust funds and other property the broker holds.

16 ■ The duty, when negotiating, to present contract proposals in an objective and unbiased manner and disclose the advantages and  
17 disadvantages of the proposals.

18 Please review this information carefully. A broker or salesperson can answer your questions about brokerage services, but if you  
19 need legal advice, tax advice, or a professional home inspection, contact an attorney, tax advisor, or home inspector.

20 This disclosure is required by section 452.135 of the Wisconsin statutes and is for information only. It is a plain-language summary of  
21 a broker's duties to a customer under section 452.133 (1) of the Wisconsin statutes.

22 **CONFIDENTIALITY NOTICE TO CUSTOMERS**

23 **BROKER WILL KEEP CONFIDENTIAL ANY INFORMATION GIVEN TO BROKER IN CONFIDENCE, OR ANY INFORMATION**  
24 **OBTAINED BY BROKER THAT HE OR SHE KNOWS A REASONABLE PERSON WOULD WANT TO BE KEPT CONFIDENTIAL,**  
25 **UNLESS THE INFORMATION MUST BE DISCLOSED BY LAW OR YOU AUTHORIZE THE BROKER TO DISCLOSE PARTICULAR**  
26 **INFORMATION. A BROKER SHALL CONTINUE TO KEEP THE INFORMATION CONFIDENTIAL AFTER BROKER IS NO LONGER**  
27 **PROVIDING BROKERAGE SERVICES TO YOU.**

28 **THE FOLLOWING INFORMATION IS REQUIRED TO BE DISCLOSED BY LAW:**

29 1. **MATERIAL ADVERSE FACTS, AS DEFINED IN SECTION 452.01 (5g) OF THE WISCONSIN STATUTES (SEE LINES 47-55),**

30 2. **ANY FACTS KNOWN BY THE BROKER THAT CONTRADICT ANY INFORMATION INCLUDED IN A WRITTEN INSPECTION**  
31 **REPORT ON THE PROPERTY OR REAL ESTATE THAT IS THE SUBJECT OF THE TRANSACTION.**

32 **TO ENSURE THAT THE BROKER IS AWARE OF WHAT SPECIFIC INFORMATION YOU CONSIDER CONFIDENTIAL, YOU MAY LIST**  
33 **THAT INFORMATION BELOW (SEE LINES 35-36). AT A LATER TIME, YOU MAY ALSO PROVIDE THE BROKER WITH OTHER**  
34 **INFORMATION YOU CONSIDER TO BE CONFIDENTIAL.**

35 **CONFIDENTIAL INFORMATION:**

36

37 **NONCONFIDENTIAL INFORMATION (The following information may be disclosed by Broker):**

38

39 **(INSERT INFORMATION YOU AUTHORIZE THE BROKER TO DISCLOSE SUCH AS FINANCIAL QUALIFICATION INFORMATION.)**

40 **CONSENT TO TELEPHONE SOLICITATION**

41 **I/We agree that the Broker and any affiliated settlement service providers (for example, a mortgage company or title company) may**  
42 **call our/my home or cell phone numbers regarding issues, goods and services related to the real estate transaction until I/We**  
43 **withdraw this consent in writing. List Home/Cell Numbers:**

44 **SEX OFFENDER REGISTRY**

45 **Notice: You may obtain information about the sex offender registry and persons registered with the registry by contacting the**  
46 **Wisconsin Department of Corrections on the Internet at: <http://offender.doc.state.wi.us/public/> or by phone at 877-234-0085.**

47 **DEFINITION OF MATERIAL ADVERSE FACTS**

48 **a "material adverse fact" is defined in Wis. Stat. § 452.01 (5g) as an adverse fact that a party indicates is of such significance, or that**  
49 **is generally recognized by a competent licensee as being of such significance to a reasonable party, that it affects or would affect**  
50 **the party's decision to enter into a contract or agreement concerning a transaction or affects or would affect the party's decision**  
51 **about the terms of such a contract or agreement. An "adverse fact" is defined in Wis. Stat. § 452.01 (1e) as a condition or occurrence**  
52 **that a competent licensee generally recognizes will significantly and adversely affect the value of the property, significantly reduce**  
53 **the structural integrity of improvements to real estate, or present a significant health risk to occupants of the property; or information**  
54 **that indicates that a party to a transaction is not able to or does not intend to meet his or her obligations under a contract or**  
55 **agreement made concerning the transaction.**

No representation is made as to the legal validity of any provision or the adequacy  
of any provision in any specific transaction.

Copyright 2006 by Wisconsin REALTORS<sup>®</sup> Association  
Drafted by Attorney Richard J. Staff

Judson & Associates SC  
2831 N Grandview Blvd, Suite 222, Pewaukee WI 53072  
Phone: (262) 695-8800  
Fax: (262) 695-8801