



Sandy Meyer
314-863-3700
SMeyer@stlcre.com

Sabina A Holtzman, CCIM
314-863-3700
SHoltzman@stlcre.com



RIVERPORT OFFICE CENTER

13640-13690 Riverport Dr. | St. Louis, MO 63043



[HOME](#)

[HIGHLIGHTS](#)

[AVAILABILITY](#)

[MAP](#)

[PHOTOS](#)

PROPERTY HIGHLIGHTS

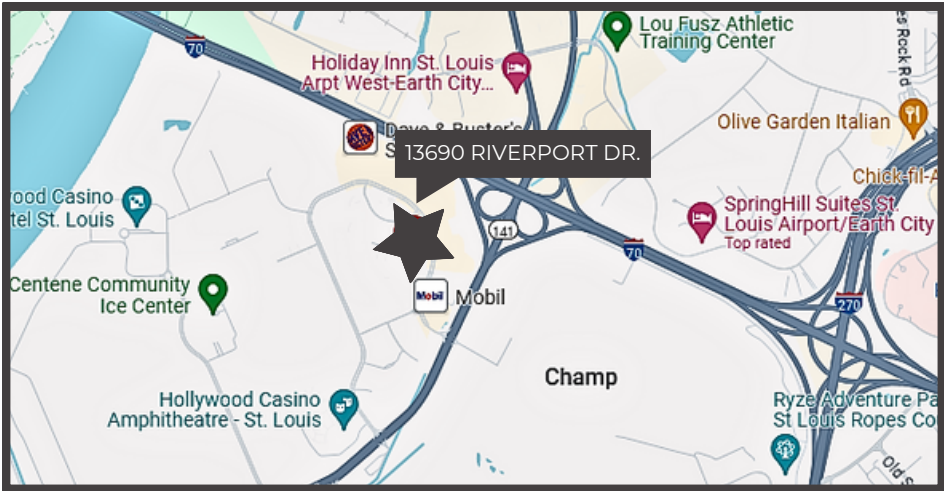
13690 Riverport Drive is a Class A office building with high-end finishes. The property is well located in the Riverport Business Park, and is centrally located in the St. Louis metropolitan area near the intersection of I-270 and I-70, providing access to the interstate highway system and the entire metropolitan area. Some FF&E available within the available spaces.

Amenities & Features

- Three-Story Atrium;
- Sofa Furniture, Fixtures, and Equipment available within select suites;
- Ample Parking;
- Common Area Breakroom;
- Area Amenities including nearby Hotels and Restaurants; and
- 2025 Asking Rates **from \$14.00/RSF** provided certain Lease Terms & Tenant Credit are met.

BUILDING INFORMATION

13690 RIVERPORT DRIVE AT-A-GLANCE	
Year Built	2001
Total Contiguous Available Space	65,680 SF
Divisible?	Yes
Floors	3
Parking Ratio	4.5:1,000



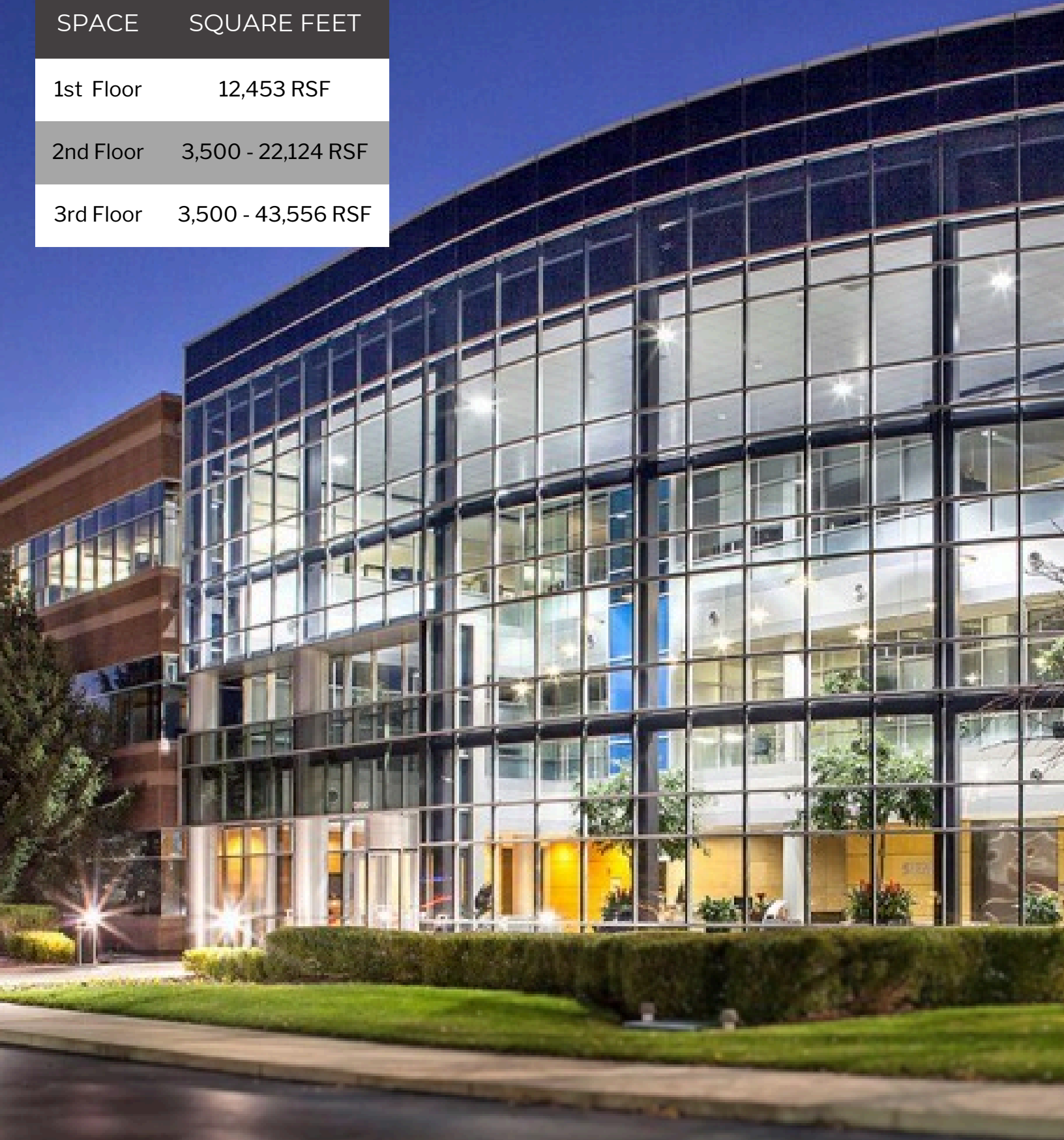
Information contained herein has been obtained from the owner of the property or from other sources & is subject to change without notice. The broker & owner do not guarantee the accuracy of this information. Broker is a member of ownership. Owners & broker make no representation as to the environmental or other conditions of the property & recommend that tenant or purchaser investigate fully.

SPACE AVAILABLE

SPACE	SQUARE FEET
1st Floor	12,453 RSF
2nd Floor	3,500 - 22,124 RSF
3rd Floor	3,500 - 43,556 RSF

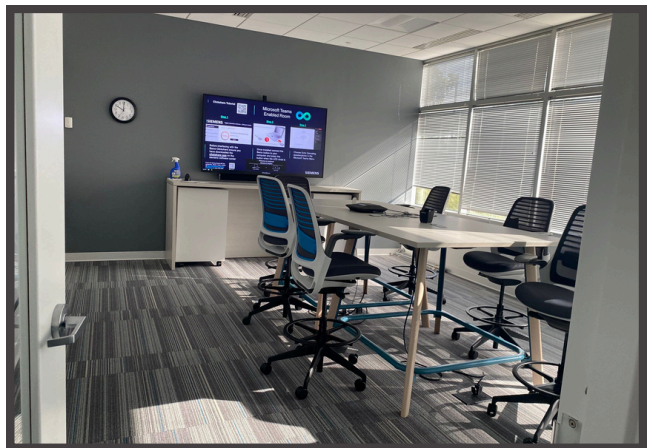
SANDY MEYER
314-863-3700
SMEYER@STLCRE.COM

SABINA A HOLTZMAN, CCIM
314-863-3700
SHoltzman@stlcre.com



1ST FLOOR

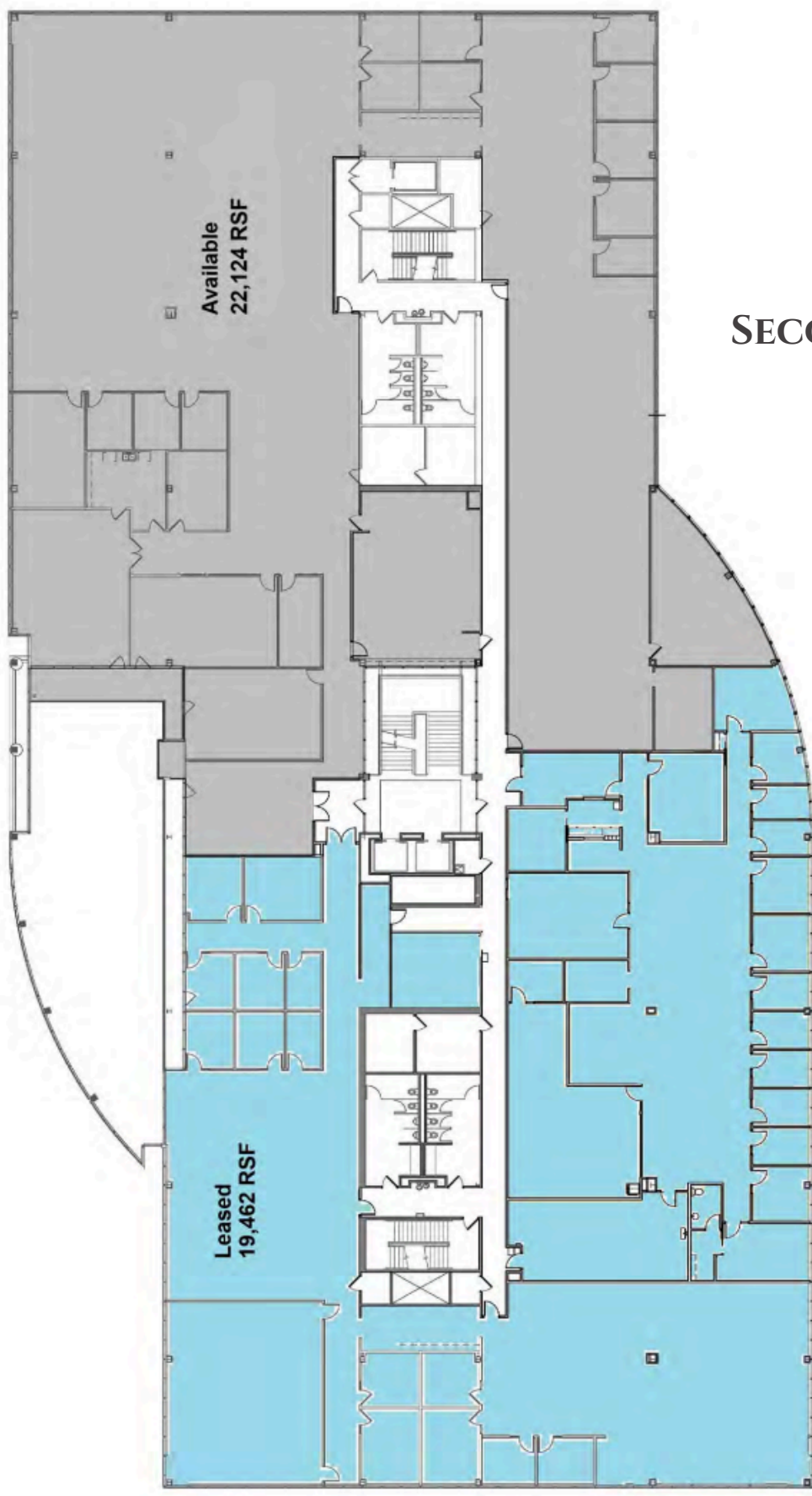
- 12,453 RSF (Loaded)
- 2 Private Offices
- 3 Conference Rooms
- Open Offices



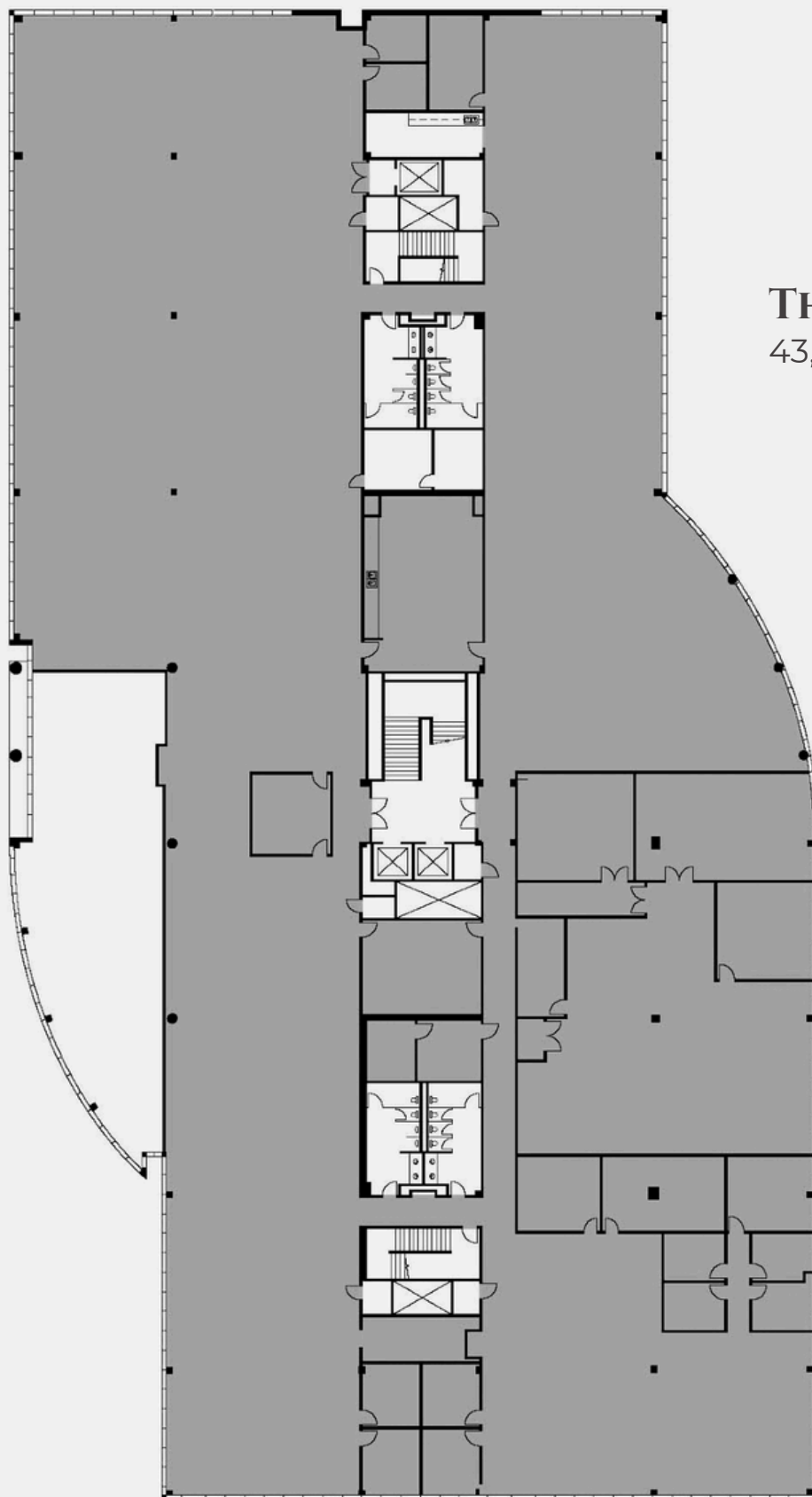
FIRST FLOOR

12,453 Square Feet

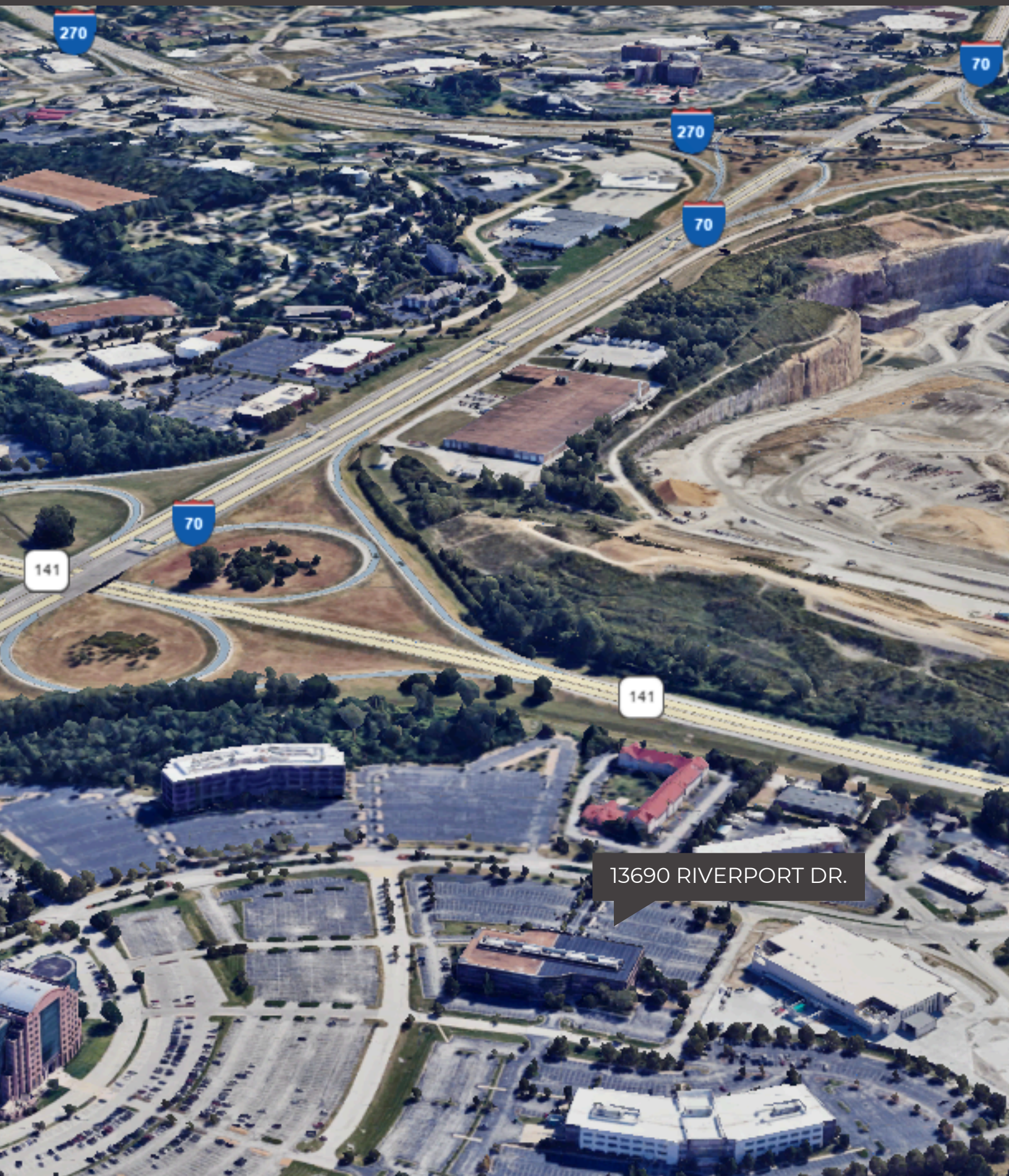




SECOND FLOOR



THIRD FLOOR
43,556 Square Feet



13690 RIVERPORT DR.

HOME

HIGHLIGHTS

AVAILABILITY

MAP

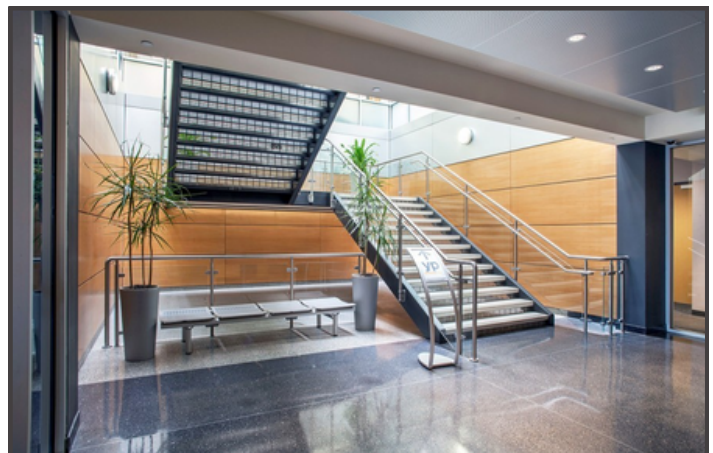
PHOTOS



Riverport Dr.



Interior Photos



Building Lobby

[HOME](#)

[HIGHLIGHTS](#)

[AVAILABILITY](#)

[MAP](#)

[PHOTOS](#)