



Office and Warehouse Buildings Available

**19605 E US 40 HIGHWAY
INDEPENDENCE, MISSOURI**

Property Highlights

- Two buildings totaling 10,000 (±) sf
- 2,500 sf office building
- 7,500 sf clear span warehouse building
- Two drive-in doors (14' and 12')
- 14' - 25' clear span
- Warehouse features excellent lighting and epoxy floor
- Sale price \$1,400,000
- Lease rate \$10.00/sf

For information, please contact:

Mark C. Long, CRE, SIOR, CCIM, LEED AP
President and Chief Executive Officer
t 816-512-1011
mlong@nzimmer.com

John F. Hassler, SIOR
Executive Managing Director
t 816-268-4208
jhassler@nzimmer.com

Seamus M. McLaughlin
Associate Director
t 816-268-4223
smclaughlin@nzimmer.com

1220 Washington Street, Suite 300
Kansas City, MO 64105

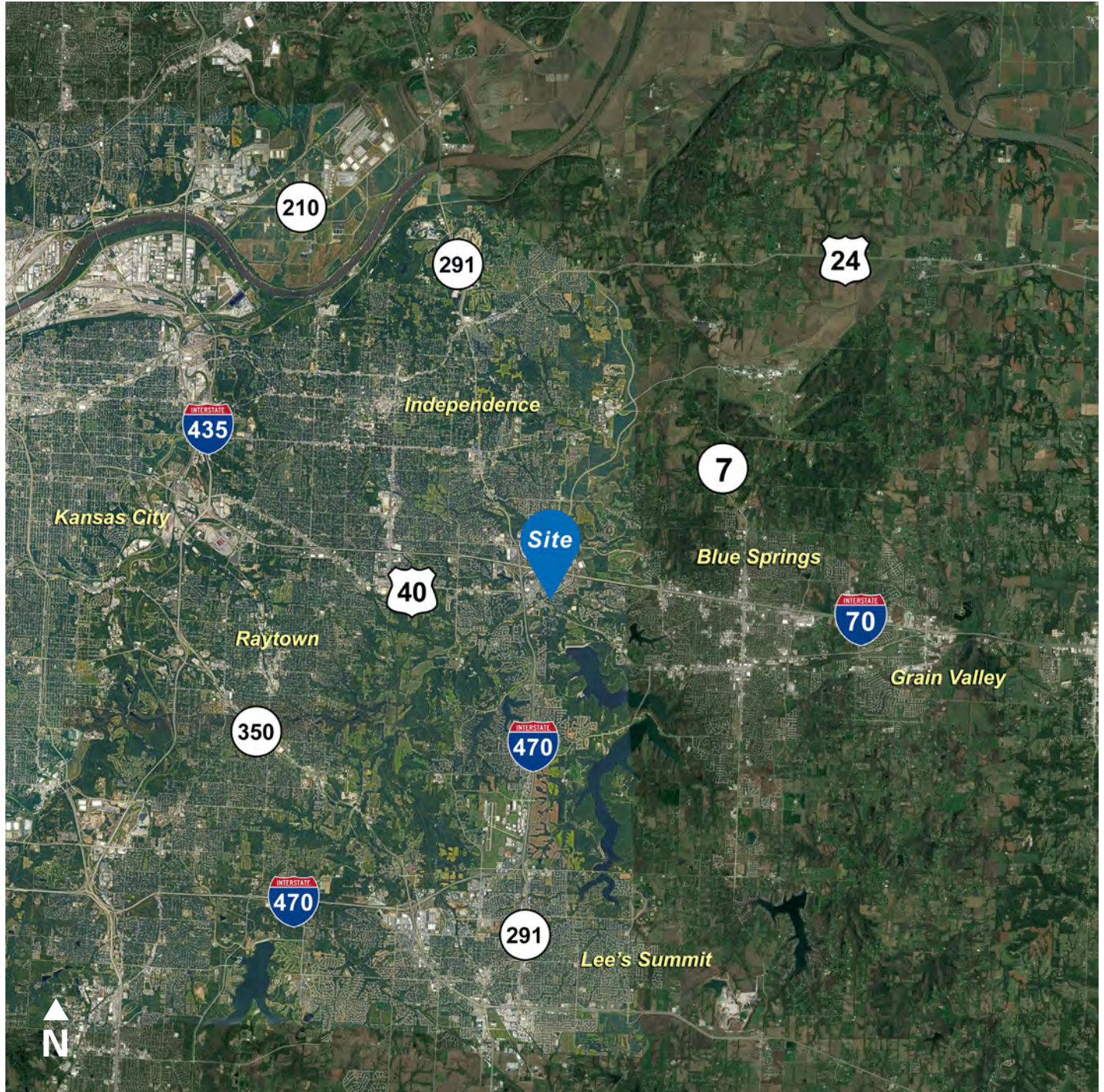
nrmkzimmer.com



NEWMARK
ZIMMER

The information contained herein has been obtained from sources deemed reliable but has not been verified and no guarantee, warranty or representation, either express or implied, is made with respect to such information. Terms of sale or lease and availability are subject to change or withdrawal without notice.

19605 E US 40 HIGHWAY, INDEPENDENCE, MISSOURI



CONTACT

Mark C. Long, CRE, SIOR, CCIM, LEED AP

President and Chief Executive Officer

t 816-512-1011

mlong@nzimmer.com

nmrkzimmer.com

John F. Hassler, SIOR

Executive Managing Director

t 816-268-4208

jhassler@nzimmer.com

Seamus M. McLaughlin

Associate Director

t 816-268-4223

smclaughlin@nzimmer.com

NEWMARK
ZIMMER

19605 E US 40 HIGHWAY, INDEPENDENCE, MISSOURI



CONTACT

Mark C. Long, CRE, SIOR, CCIM, LEED AP

President and Chief Executive Officer

t 816-512-1011

mlong@nzimmer.com

nmrkzimmer.com

John F. Hassler, SIOR

Executive Managing Director

t 816-268-4208

jhassler@nzimmer.com

Seamus M. McLaughlin

Associate Director

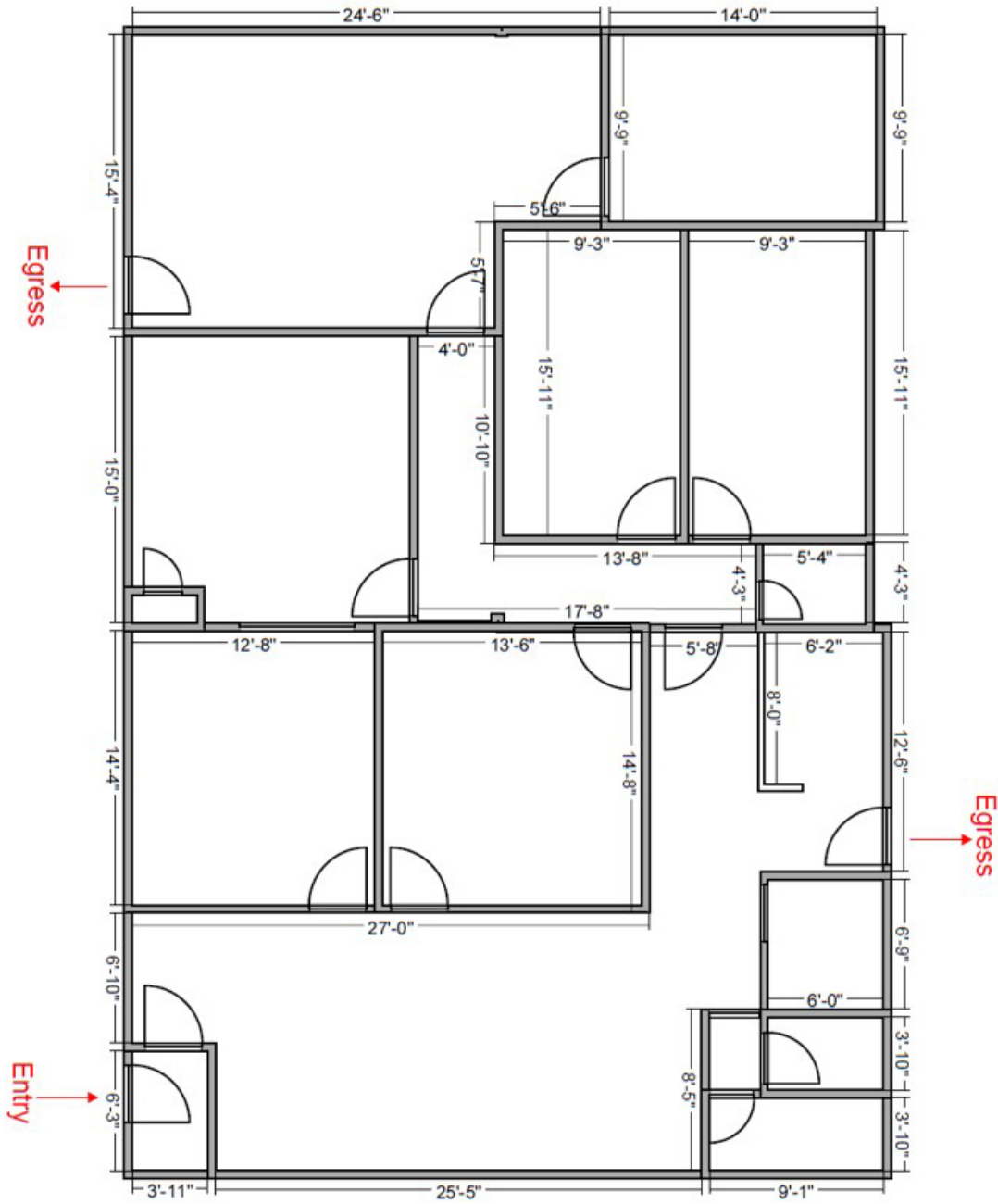
t 816-268-4223

smclaughlin@nzimmer.com

NEWMARK
ZIMMER

19605 E US 40 HIGHWAY, INDEPENDENCE, MISSOURI

Office Building Floor Plan



CONTACT

Mark C. Long, CRE, SIOR, CCIM, LEED AP
President and Chief Executive Officer
t 816-512-1011
mlong@nzimmer.com
nmrkzimmer.com

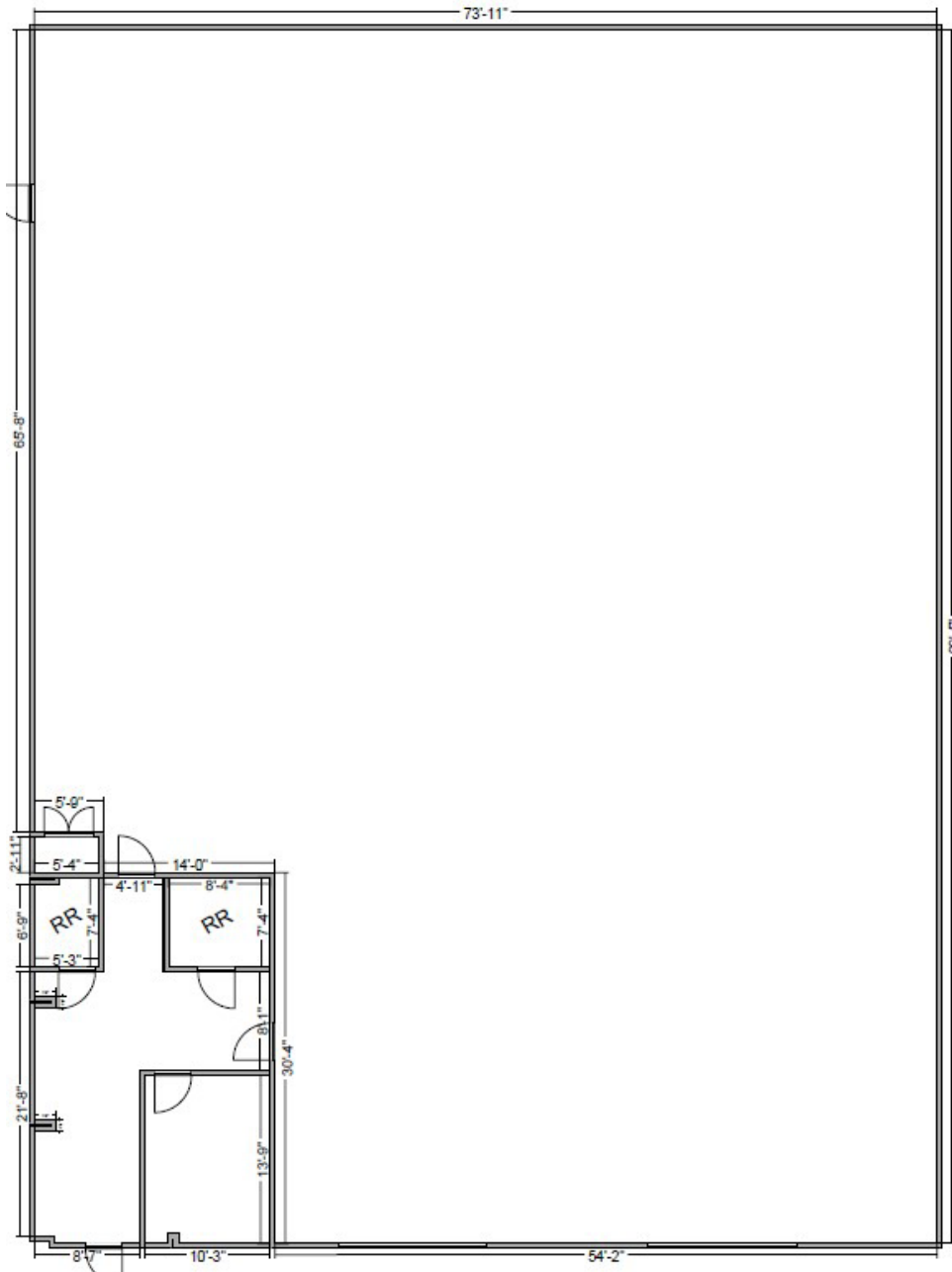
John F. Hassler, SIOR
Executive Managing Director
t 816-268-4208
jhassler@nzimmer.com

Seamus M. McLaughlin
Associate Director
t 816-268-4223
smclaughlin@nzimmer.com



19605 E US 40 HIGHWAY, INDEPENDENCE, MISSOURI

Warehouse Floor Plan



CONTACT

Mark C. Long, CRE, SIOR, CCIM, LEED AP

President and Chief Executive Officer

t 816-512-1011

mlong@nzimmer.com

nmrkzimmer.com

John F. Hassler, SIOR

Executive Managing Director

t 816-268-4208

jhassler@nzimmer.com

Seamus M. McLaughlin

Associate Director

t 816-268-4223

smclaughlin@nzimmer.com

NEWMARK
ZIMMER

19605 E US 40 HIGHWAY, INDEPENDENCE, MISSOURI



CONTACT

Mark C. Long, CRE, SIOR, CCIM, LEED AP

President and Chief Executive Officer

t 816-512-1011

mlong@nzimmer.com

nmrkzimmer.com

John F. Hassler, SIOR

Executive Managing Director

t 816-268-4208

jhassler@nzimmer.com

Seamus M. McLaughlin

Associate Director

t 816-268-4223

smclaughlin@nzimmer.com

NEWMARK
ZIMMER