

100

EAST 170TH STREET
BETWEEN WALTON AVENUE & WYTHE PLACE
MT EDEN/BRONX

RETAIL FOR LEASE



RETAIL FOR LEASE



PRIME MULTI-LEVEL RETAIL OPPORTUNITY



100

EAST 170TH STREET

BETWEEN WALTON AVENUE & WYTHE PLACE
MT EDEN/BRONX

SIZE:

Ground Floor	4,500 SF
Selling Lower Level	7,500 SF
Selling Second Floor	12,000 SF
Third Floor	12,000 SF (storage)

FRONTAGE: 45'

CEILING HEIGHT:

Ground Floor	14'-16'
Selling Lower Level	8'-14'
Selling Second Floor	11'-13'
Third Floor	11'-13'

POSSESSION: Immediate

TRANSPORTATION: B D 4

HIGHLIGHTS:

- High foot traffic area in dense residential neighborhood
- Formerly KIDSTOWN
- Space is divisible (see floor plans)
- Neighboring tenants include:
Chipotle, Snipes, Taco Bell, Chase Bank, McDonald's, Fabco Shoes, Dunkin', Xios, Jimmy Jazz, CityMD



100

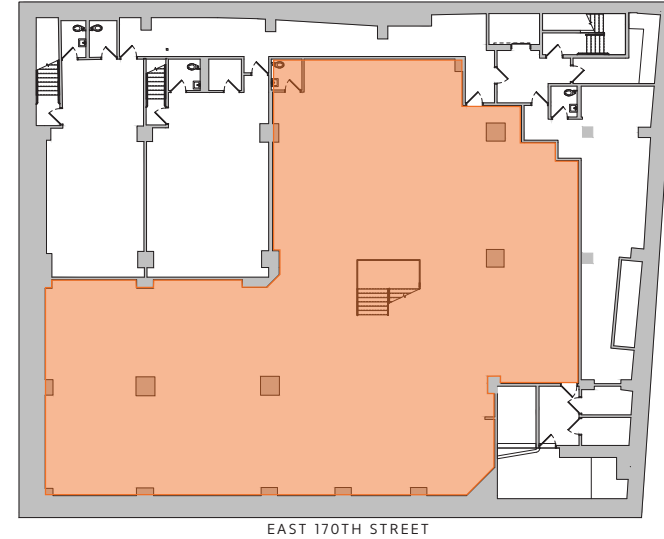
EAST 170TH STREET

FLOOR PLAN (DIVISION OPTION 1):
FULL SPACE - 36,000 SF

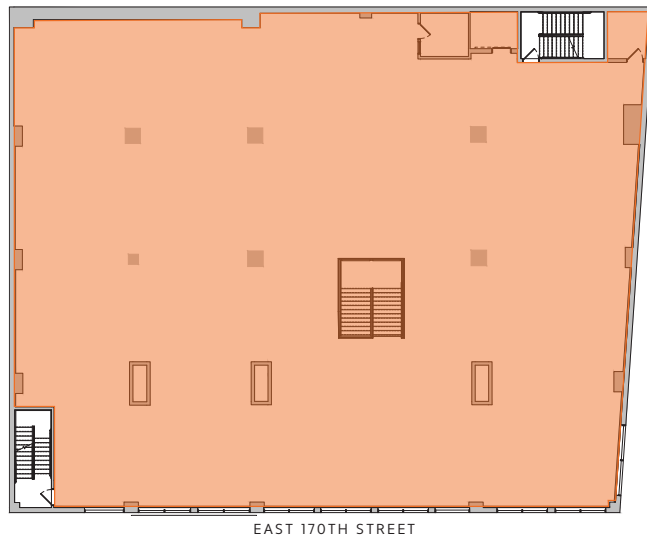
GROUND FLOOR - 4,500 SF



LOWER LEVEL - 7,500 SF



SECOND FLOOR - 12,000 SF



THIRD FLOOR - 12,000 SF (STORAGE)

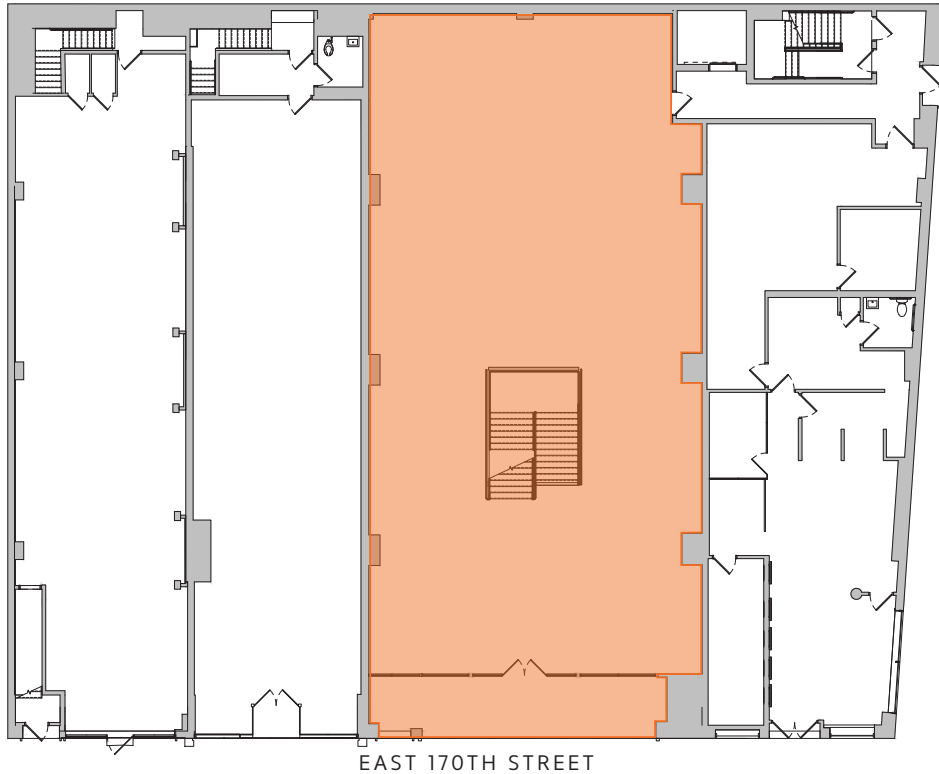


100

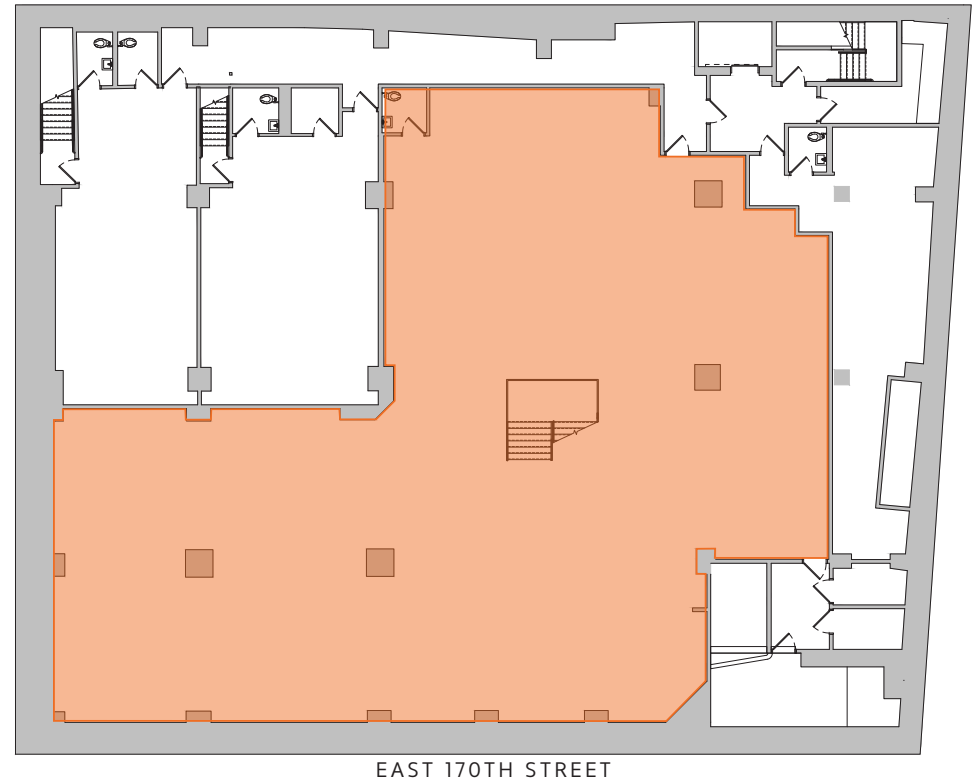
EAST 170TH STREET

FLOOR PLAN (DIVISION OPTION 2):
12,000 SF TOTAL

GROUND FLOOR - 4,500 SF



LOWER LEVEL - 7,500 SF



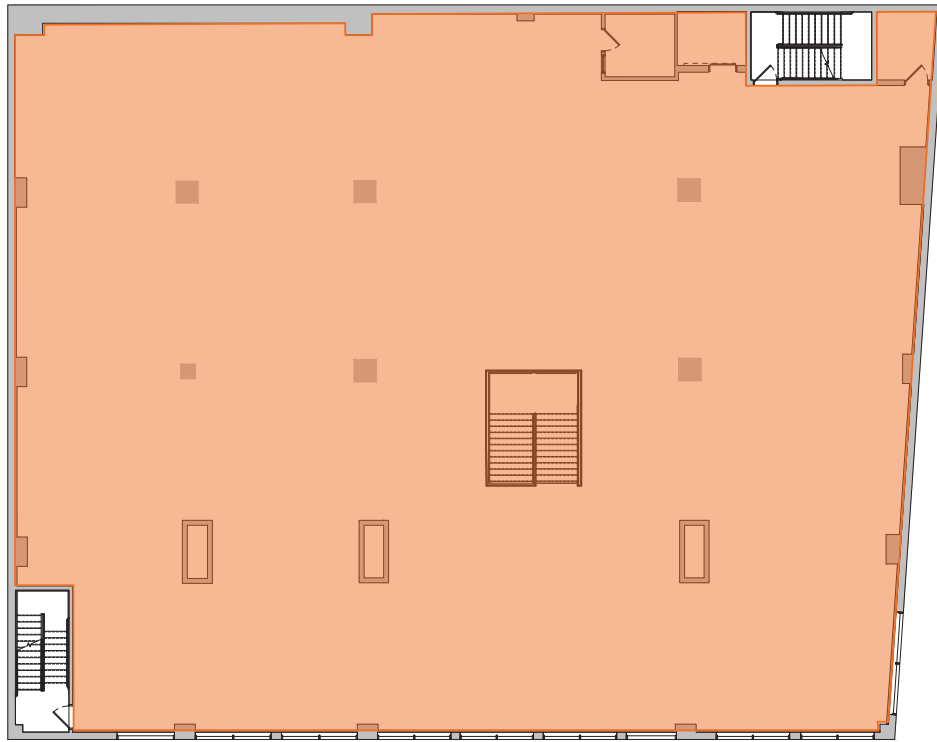
All information supplied in this marketing presentation and/or flyer is from sources deemed reliable and is furnished subject to errors, omissions, modifications, removal of listings from sale/lease and to any listing condition. Any square footage, dimensions, floor plans and/or technical data set forth are approximations and are subject to further elaboration/confirmation.

100

EAST 170TH STREET

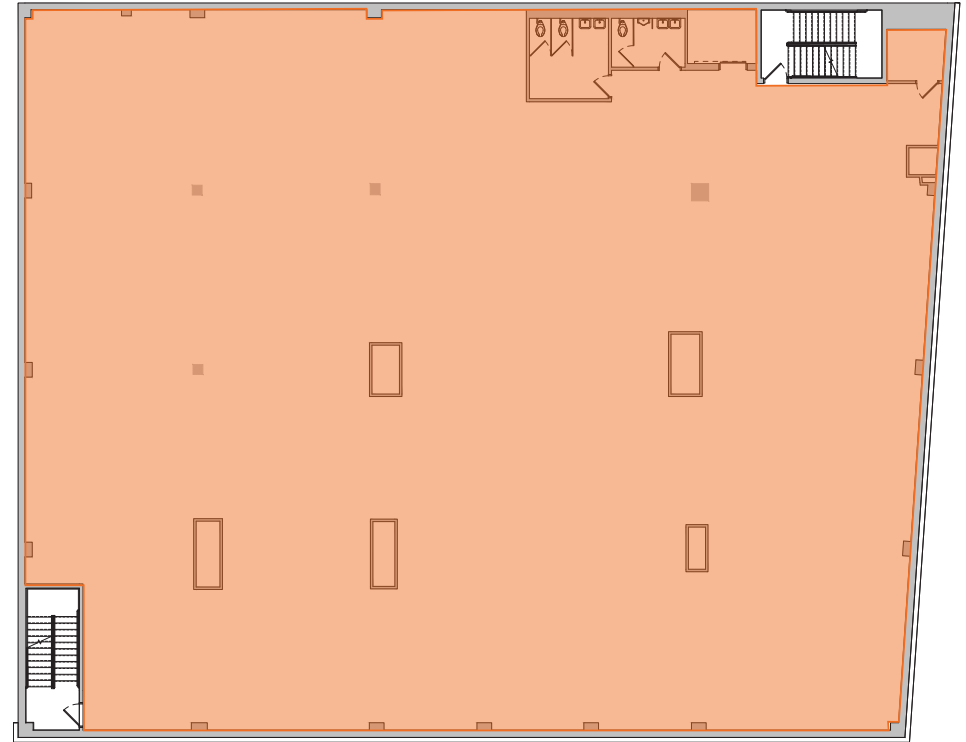
FLOOR PLAN (DIVISION OPTION 3):
24,000 SF TOTAL

SECOND FLOOR - 12,000 SF



EAST 170TH STREET

THIRD FLOOR - 12,000 SF (STORAGE)



EAST 170TH STREET



All information supplied in this marketing presentation and/or flyer is from sources deemed reliable and is furnished subject to errors, omissions, modifications, removal of listings from sale/lease and to any listing condition. Any square footage, dimensions, floor plans and/or technical data set forth are approximations and are subject to further elaboration/confirmation.

100

EAST 170TH STREET

BETWEEN WALTON AVENUE & WYTHE PLACE
MT EDEN/BRONX

FOR MORE INFORMATION,
PLEASE CONTACT:

SAMMY LEVY

347.579.9559 | SLevy@ksrny.com

FREDDY SOUID

917.968.0329 | FSoud@ksrny.com

JACK HAMADANI

718.415.0095 | JHamadani@ksrny.com

ALBERT MANOPLA

212.380.8369 | AManopla@ksrny.com

