

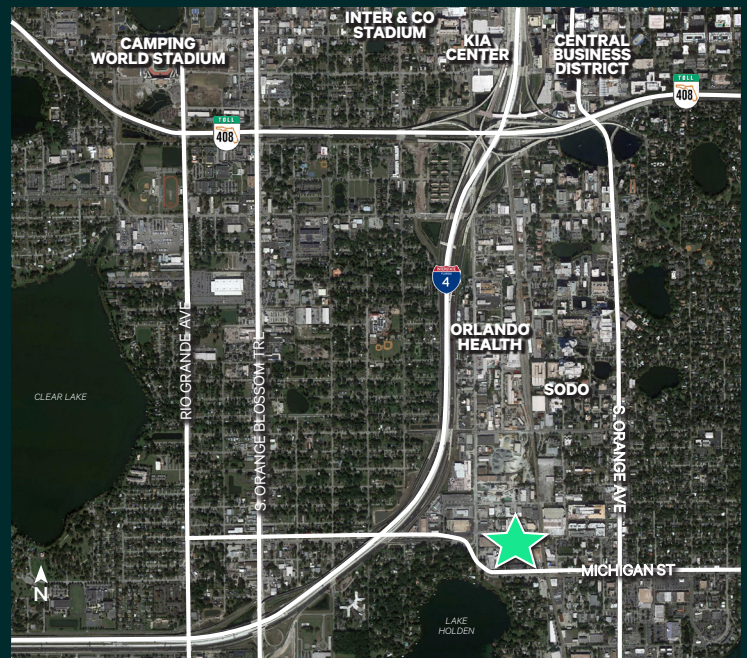
Up to 4,800± SF Available

379 West Michigan St
Orlando, FL 32806
www.cbre.com/orlando

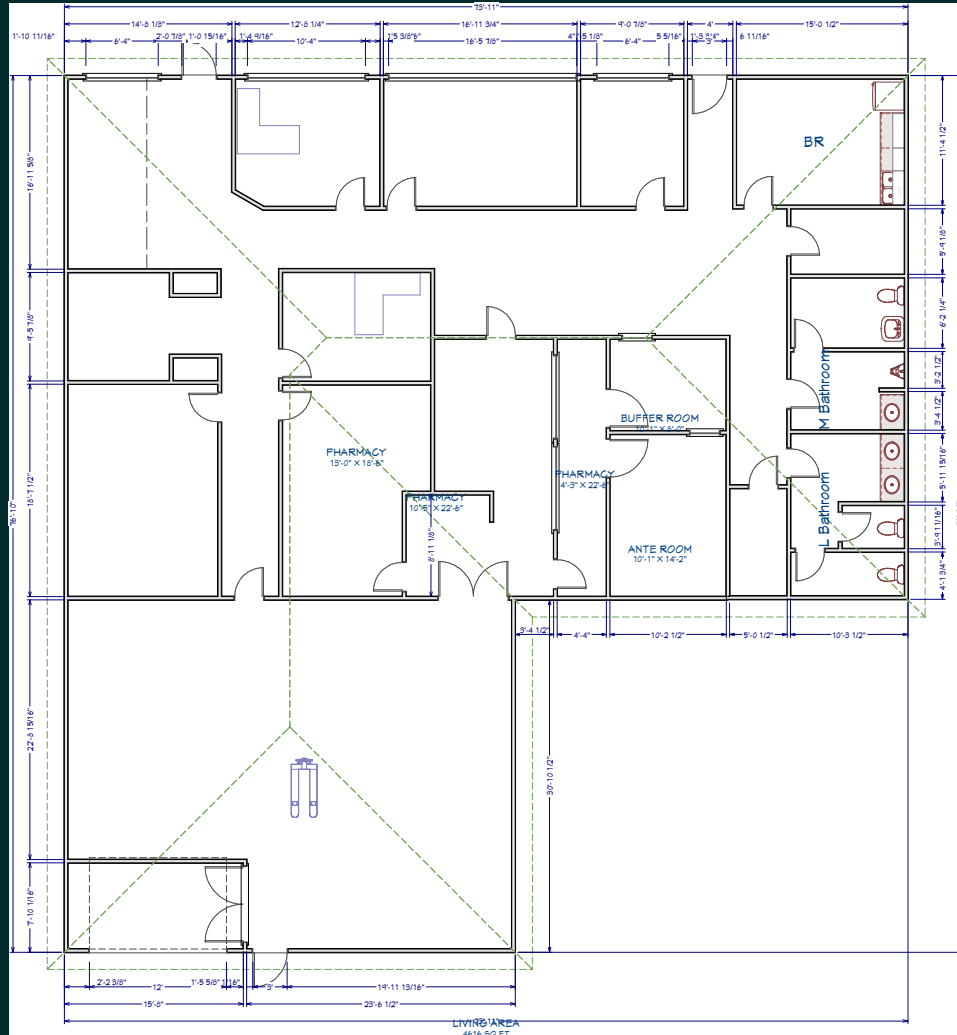


Property Details

- + Flex Industrial Space available for lease
 - Up to 4,800± SF
- + Available 12/1/25 or sooner
- + 3 perimeter offices
- + Conference room
- + Breakroom
- + Mix of interior offices and pharmacy space
- + Ample parking
- + Close proximity to South Orange Blossom Trl and S. Orange Ave
- + Small warehouse component fully air conditioned
- + Dock high availability
- + Conveniently located 0.47 miles east of Interstate 4 at the Michigan St. on-ramp connecting to State Road 408



Floor Plan | 4,800± SF



For leasing information
please contact:

Todd Davis, SIOR, CCIM

First Vice President

Advisory & Transaction Services

+1 407 404 5107

todd.davis1@cbre.com

CBRE