

BELLEWOOD OFFICE PARK

BELLEWOOD TWO
FOR LEASE



2025 112th Avenue NE | Bellevue, WA

Office Space Available For Lease in Bellewood Office Park, North of Downtown Bellevue, in the Prominent Hidden Valley Area of Suburban Bellevue.

EXCLUSIVELY LISTED BY:

Dan Krekel, CCIM

(425) 586-4655

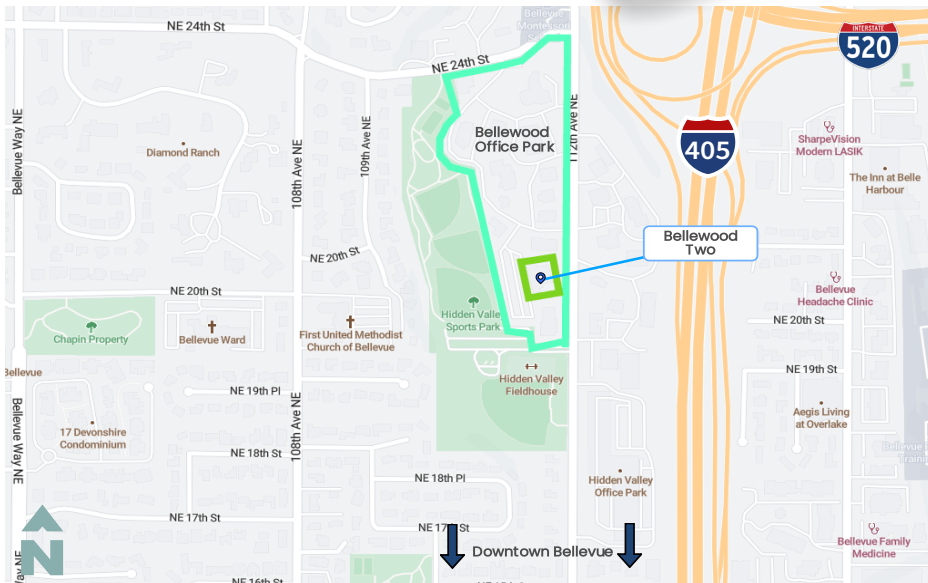
dkrekel@leibsohn.com



The information contained herein has been received from sources we deem reliable. While we have no reason to doubt its accuracy, we do not guarantee it. You are advised to independently verify all information.


BELLEWOOD OFFICE PARK

2025 112th Ave NE
Bellevue, WA 98004



SUITE	SIZE	LEASE RATE	AVAILABILITY
200	3,292 RSF	\$34.50/SF, Full Service	Immediately
300	2,411 RSF	\$37.50/SF, Full Service	Immediately
301	2,430 RSF	\$37.50/SF, Full Service	Immediately
300+301	4,841 RSF	\$36.00/SF, Full Service	Immediately

PROPERTY HIGHLIGHTS

- Newly updated common areas and restrooms
- Close to Downtown Bellevue, Kaiser Permanent and Overlake Medical Center
- Excellent Views of Hidden Valley Park
- Elevator in Building
- Free Parking | 5.0/1,000 RSF
- Easy Access to I-405, SR-520 & I-90
-  available to building tenants

BELLEWOOD TWO
FOR LEASE

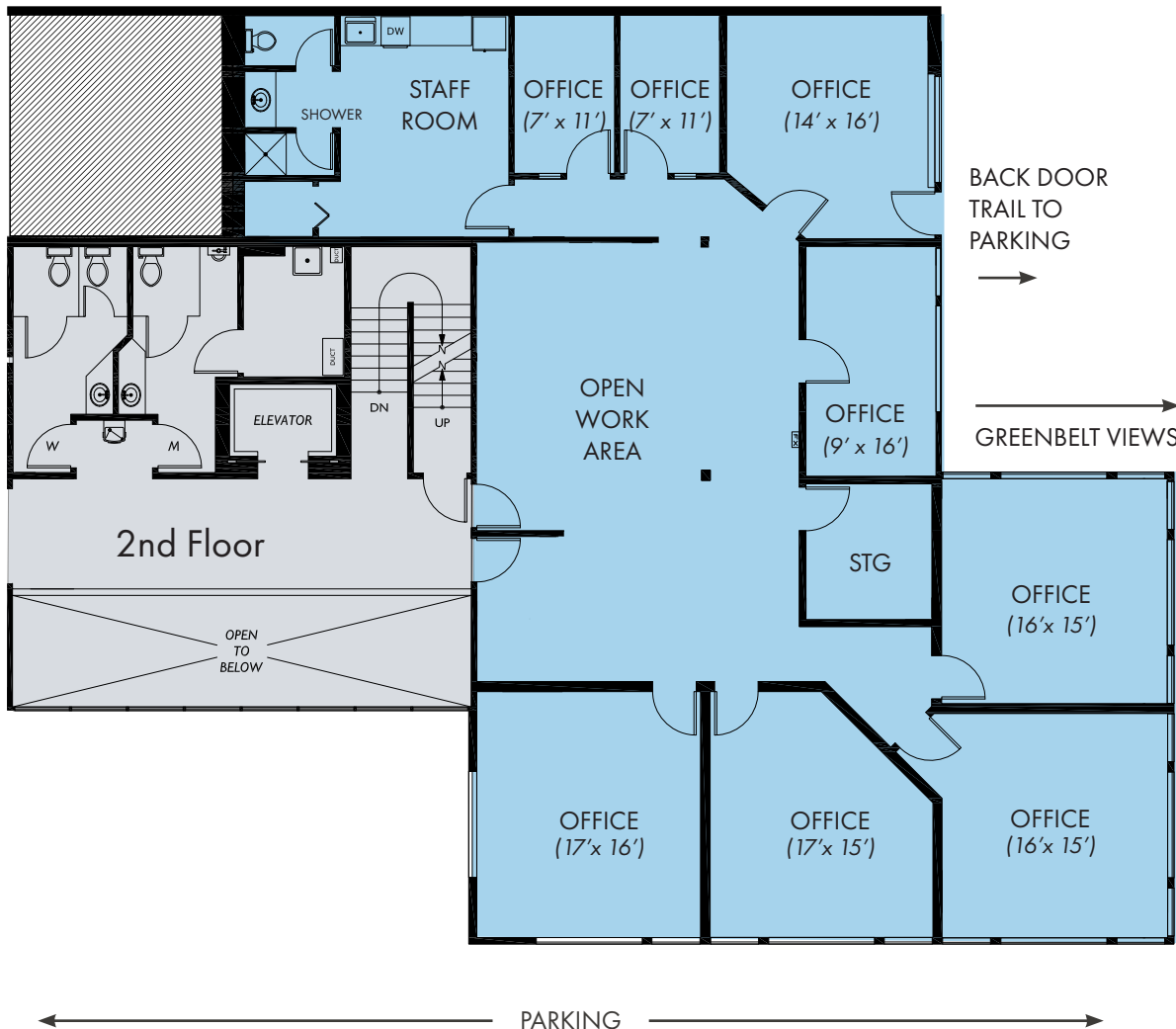
EXCLUSIVELY LISTED BY

**Leibsohn
& Company**

Dan Krekel, CCIM
(425) 586-4655
dkrekel@leibsohn.com

BELLEWOOD OFFICE PARK

2025 112th Ave NE
Bellevue, WA 98004



SUITE	SIZE	MONTHLY RATE	AVAILABLE
200	3,292 RSF	\$9,464.50, Full Service	Immediately

SUITE HIGHLIGHTS

- Great views of Hidden Valley Park and Greenbelt
- Back Door Access to Parking Lot Along Pathway
- Sound proofed private offices

OFFICE WITH PARK VIEW



EXCLUSIVELY LISTED BY

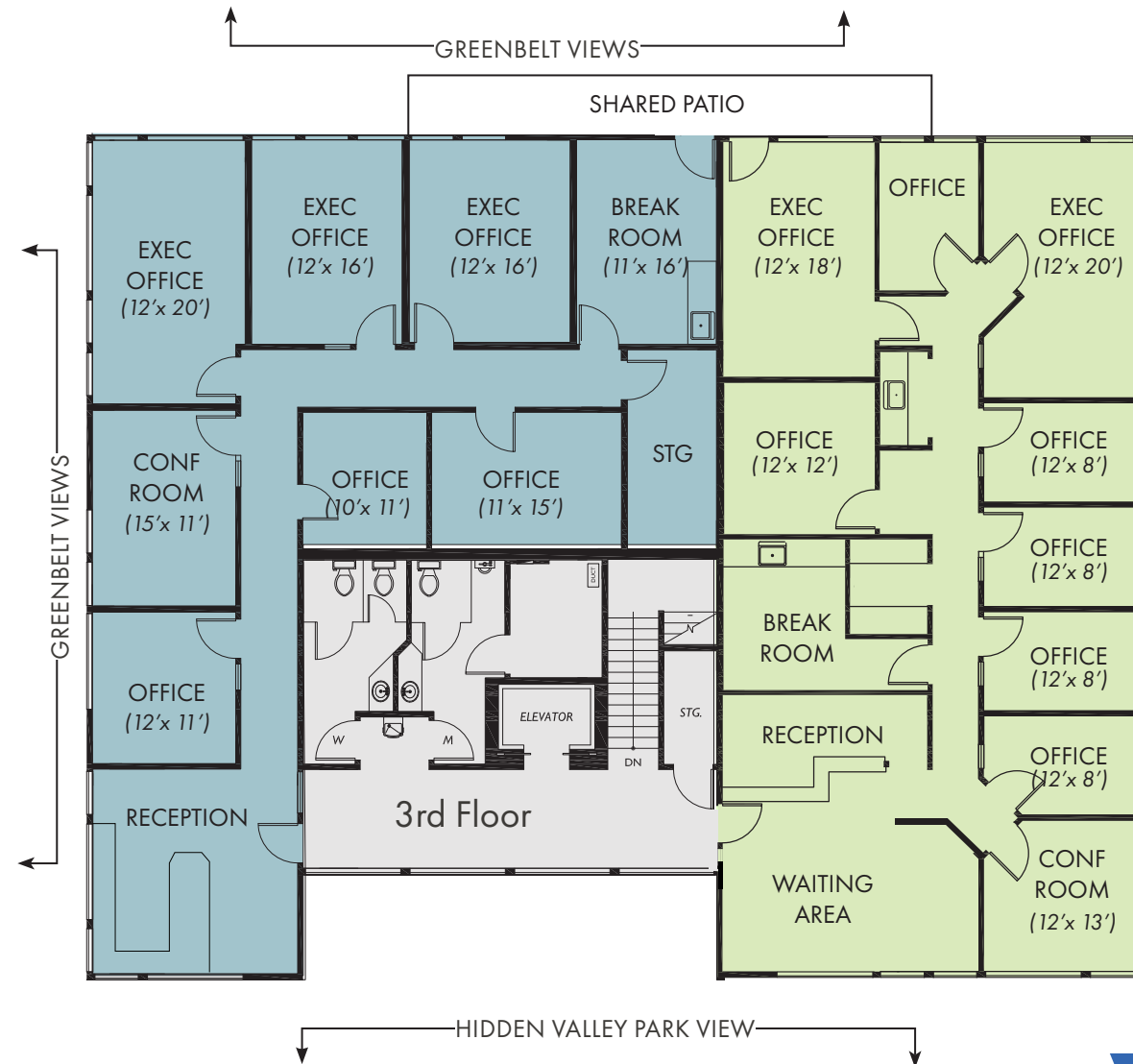


Dan Krekel, CCIM
(425) 586-4655
dkrekel@leibsohn.com

BELLEWOOD TWO FOR LEASE

BELLEWOOD OFFICE PARK

2025 112th Ave NE
Bellevue, WA 98004



SUITE	SIZE	MONTHLY RATE	AVAILABLE
300	2,411 RSF	\$7,534.38, Full Service	Immediately
301	2,430 RSF	\$7,593.75, Full Service	Immediately
300+301	4,841 RSF	\$14,523.00, Full Service	Immediately

SUITE 301 GREENBELT VIEWS



EXCLUSIVELY LISTED BY
Leibsohn & Company

Dan Krekel, CCIM
(425) 586-4655
dkrekel@leibsohn.com

BELLEWOOD TWO FOR LEASE

BELLEWOOD OFFICE PARK

2025 112th Ave NE
Bellevue, WA 98004



2ND FLOOR



BUILDING ENTRY



UPDATED COMMON AREAS



SUITE 300

EXCLUSIVELY LISTED BY
**Leibsohn
& Company**

Dan Krekel, CCIM
(425) 586-4655
dkrekel@leibsohn.com

BELLEWOOD TWO FOR LEASE