



OFFICE FOR LEASE

4832 Hwy 162
Hollywood, SC 29449

Kip Bowman | Principal | kipbowman@gmail.com
Sara Bodell | Associate | sbodell@cbcatlantic.com



COLDWELL BANKER
COMMERCIAL
ATLANTIC



ADDRESS

4832 Hwy 162
Hollywood, SC 29449



LEASE RATE

\$1,650 Gross Lease



BUILDING SIZE

1,000 SF



ZONING

Town of Hollywood Zoning:
General Commercial



COUNTY

Charleston County



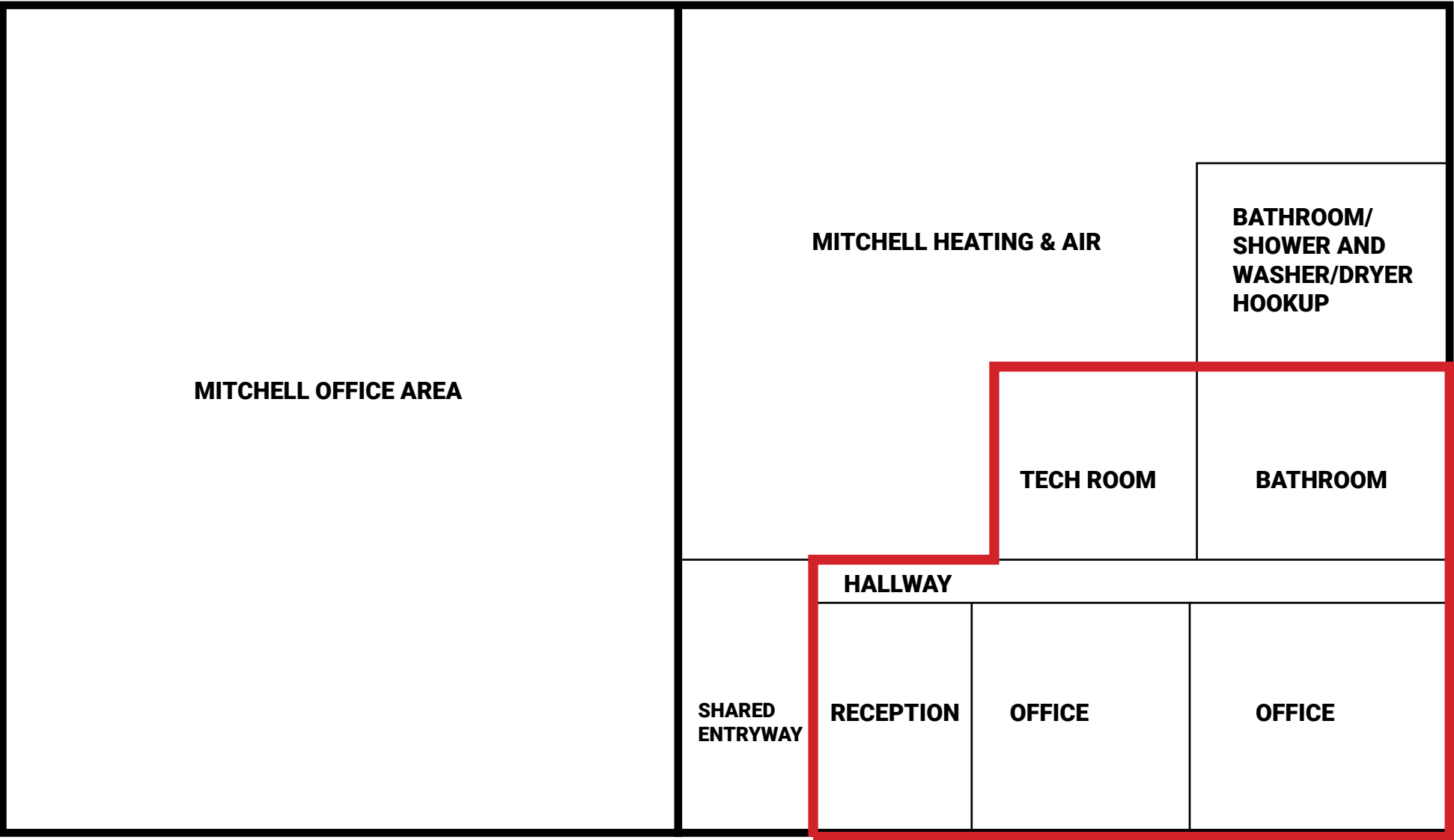
TAX ID

247-00-00-330

PROPERTY OVERVIEW

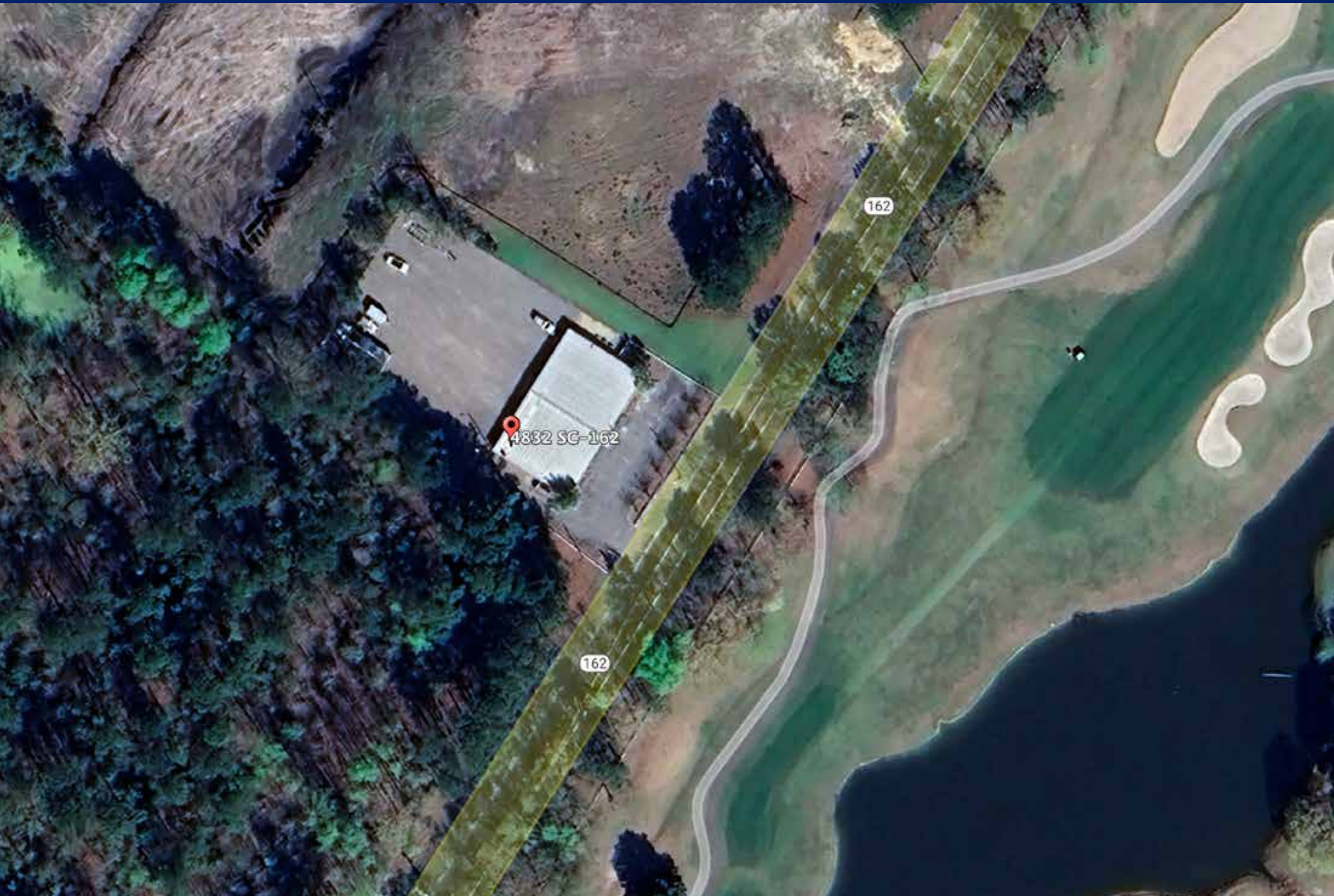
Office space for lease across from Stono Ferry. Lease includes ample parking and high visibility along Hwy 162 close to West Ashley. There are 2 large offices; 1 bathroom; conference room and/or receptionist/waiting room.

FLOOR PLAN



AVAILABLE 1,000 SF

AERIAL

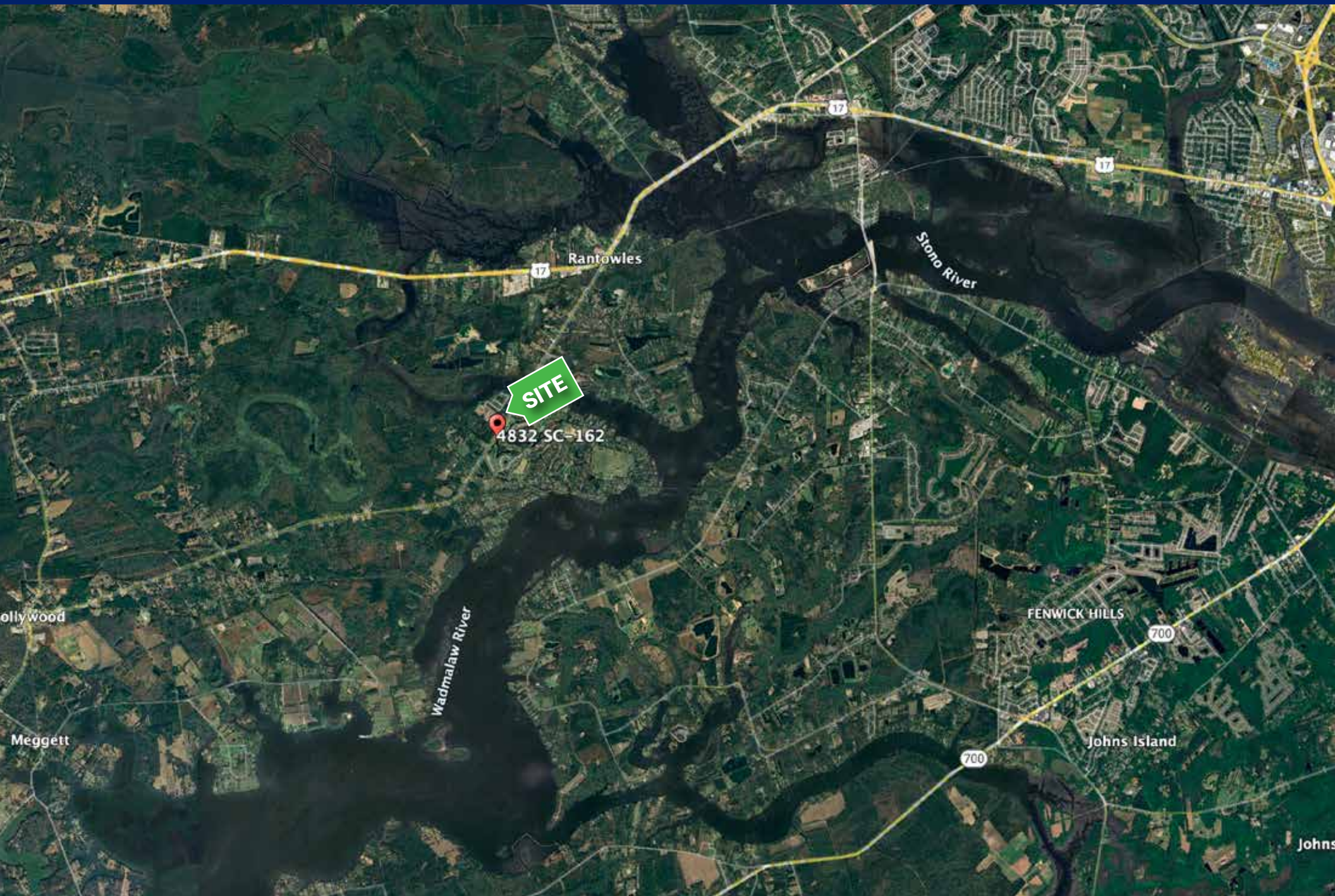


4832 SC-162

162

162

AREA MAP



CHARLESTON METRO AREA

The Charleston region's population is growing 3X faster than the U.S. average, to more than 849,000. A steady stream of well-educated young talent, who come for jobs – or create their own in our business-friendly community – are helping to boost that number.



POPULATION & DEMOGRAPHICS

849,000

Charleston Region Population

38.5

Median Age

40+

New people move to the region
each day

<https://charlestonregionaldata.com/profile-metro>
<https://www.crda.org/local-data/population-demographics/>



COLDWELL BANKER
COMMERCIAL
ATLANTIC

4832 Hwy 162 | Hollywood, SC 29449

OFFICE FOR LEASE IN HOLLYWOOD, SC



Kip Bowman
Principal
(C) 843.437.0074
kipbowman@gmail.com

Sara Bodell
Associate
(C) 864.903.2731
sbodell@cbscatlantic.com



COLDWELL BANKER
COMMERCIAL
ATLANTIC

3506 W Montague Ave Suite 200
North Charleston, SC 29418
843.744.9877
cbscatlantic.com | cbcretailatlantic.com

This information has been obtained from sources believed reliable but has not been verified for accuracy or completeness. Coldwell Banker Commercial Atlantic makes no guarantee, representation or warranty and accepts no responsibility or liability as to the accuracy, completeness, or reliability of the information contained herein. You should conduct a careful, independent investigation of the property and verify all information. Any reliance on this information is solely at your own risk.

The information contained herein should be considered confidential and remains the sole property of Coldwell Banker Commercial Atlantic at all times. Although every effort has been made to ensure accuracy, no liability will be accepted for any errors or omissions. Disclosure of any information contained herein is prohibited except with the express written permission of Coldwell Banker Commercial Atlantic.