



## PROPERTY FEATURES

- 1 Acre - 5 Acres Commercial / Light Industrial Lots for Sale
- Part of new King Soopers Anchored Center  
(Estimated Q4 2026 Opening)
- Fully Finished Lots to be Delivered Q1-2027
- Flexible Zoning Allows a Wide Range of Industrial & Commercial Uses, Including Outdoor Storage
- Excellent Access to Parker Road via Signalized Intersection
- Located in Expanding / Exclusive South Parker Market
- Strategic Front Range Location: Approximately 15 Minutes to the Denver Tech Center, 30 Minutes to Downtown Denver & 45 Minutes to D.I.A
- Residential & Multi-Family Uses Prohibited

## PROPERTY DETAILS

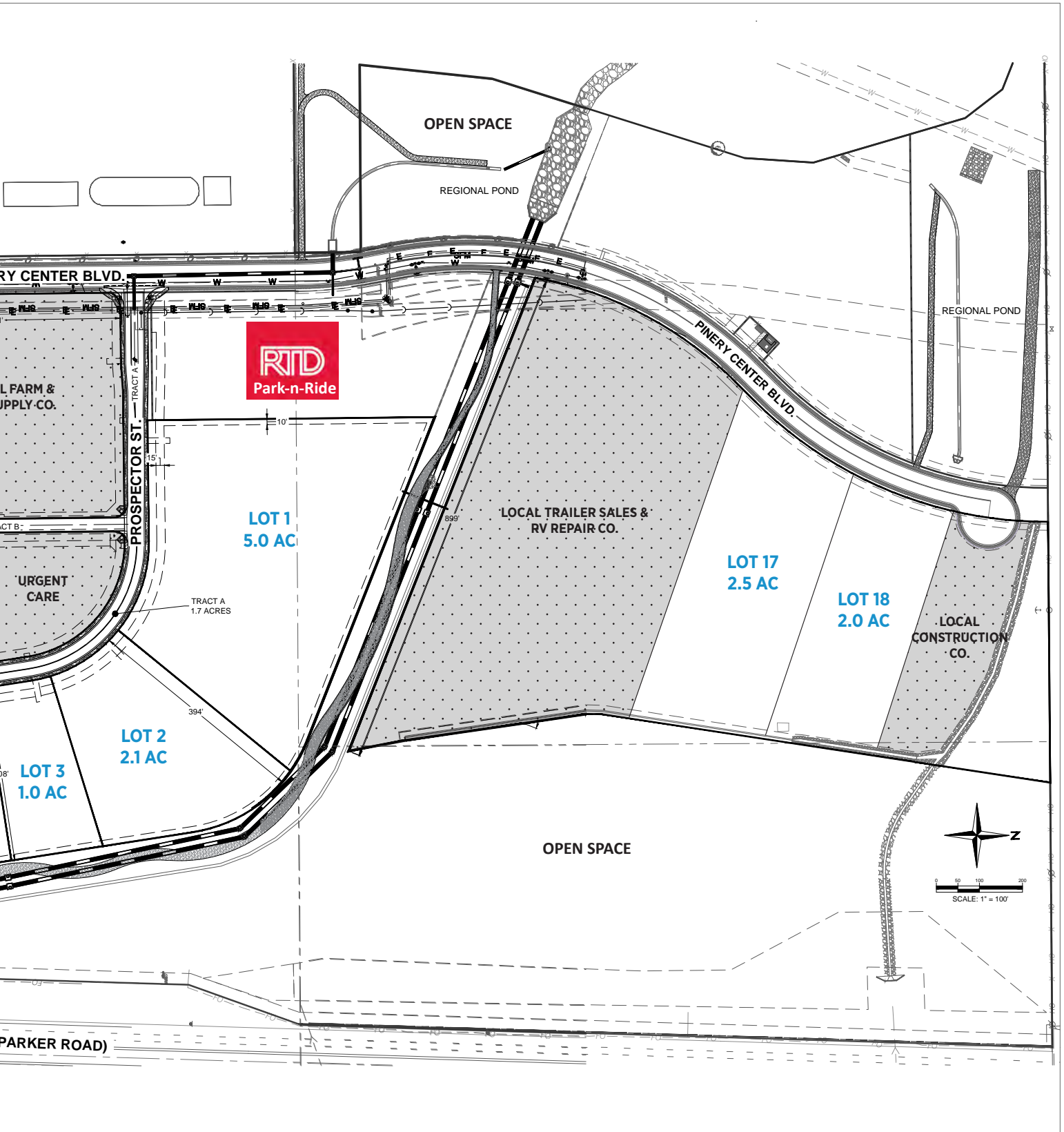
LOT INFORMATION	1 Acre - 5 Acres
PRICE	Contact Broker
ZONING	Planned Development Commercial / Light Industrial
GRADING	Level / Construction Ready (Regional Stormwater Drainage)
WATER / SAN	Pinery Water & Sanitation
GAS / ELECTRIC	Xcel Energy / CORE
CITY / COUNTY	Unincorp. Douglas County (Parker Mailing Address)
ACCESS	Multiple Access Points to Parker Road

# COMMERCIAL / LIGHT INDUSTRIAL LOTS FOR SALE

PARKER ROAD & NORTH PINERY PARKWAY, PARKER, CO

## LOT SUBDIVISION EXHIBIT





PINERY VILLAGE MASTER PLAN



REGIONAL RESIDENTIAL AERIAL

