

# 2480 Fruitville Rd

2480 FRUITVILLE RD SARASOTA, FL 34237



## PROPERTY DESCRIPTION

Fantastic office space located on desirable Fruitville Rd. near Downtown Sarasota! Frontage on Fruitville Rd. Storefront entrance into spacious reception/waiting area, multiple offices, open workspace and private restroom. Ample parking. Close proximity to Downtown Sarasota, and I-75.

## OFFERING SUMMARY

Lease Rate:	\$28.00 SF/yr (MG)
Number of Units:	12
Available SF:	750 SF
Lot Size:	31,029 SF
Building Size:	8,900 SF

DEMOGRAPHICS	0.3 MILES	0.5 MILES	1 MILE
Total Households	657	2,099	6,060
Total Population	1,293	4,378	13,791
Average HH Income	\$78,212	\$78,688	\$84,251



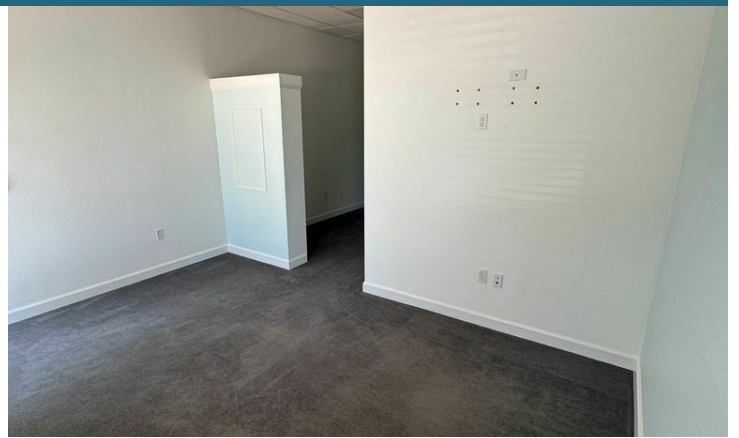
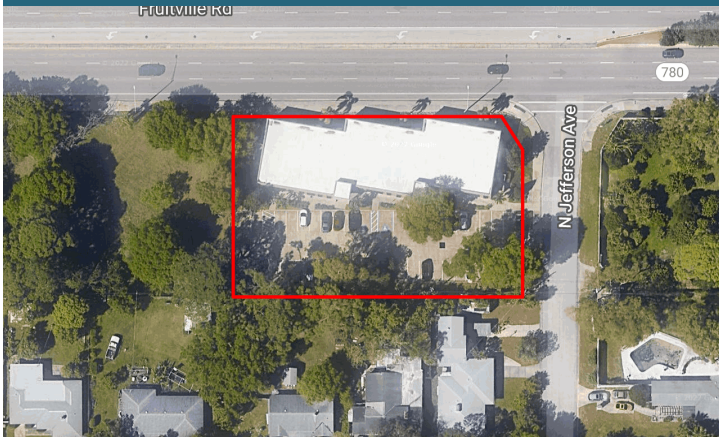
### DEREK ROBBINS

Broker Associate  
941.356.4906  
Derek@RobbinsCommercial.com



# 2480 Fruitville Rd

2480 FRUITVILLE RD SARASOTA, FL 34237



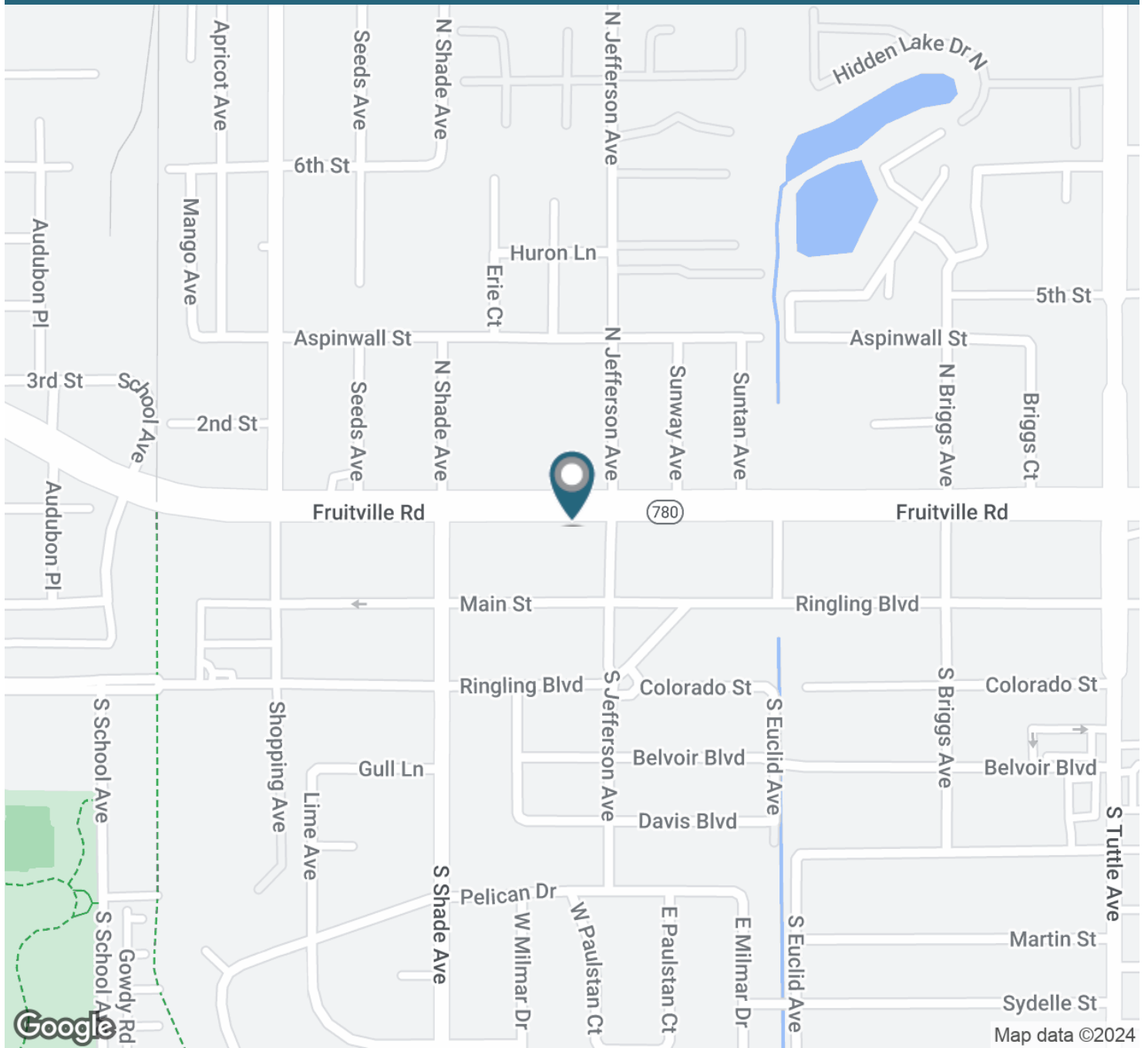
**DEREK ROBBINS**  
Broker Associate  
941.356.4906  
Derek@RobbinsCommercial.com





# 2480 Fruitville Rd

2480 FRUITVILLE RD SARASOTA, FL 34237

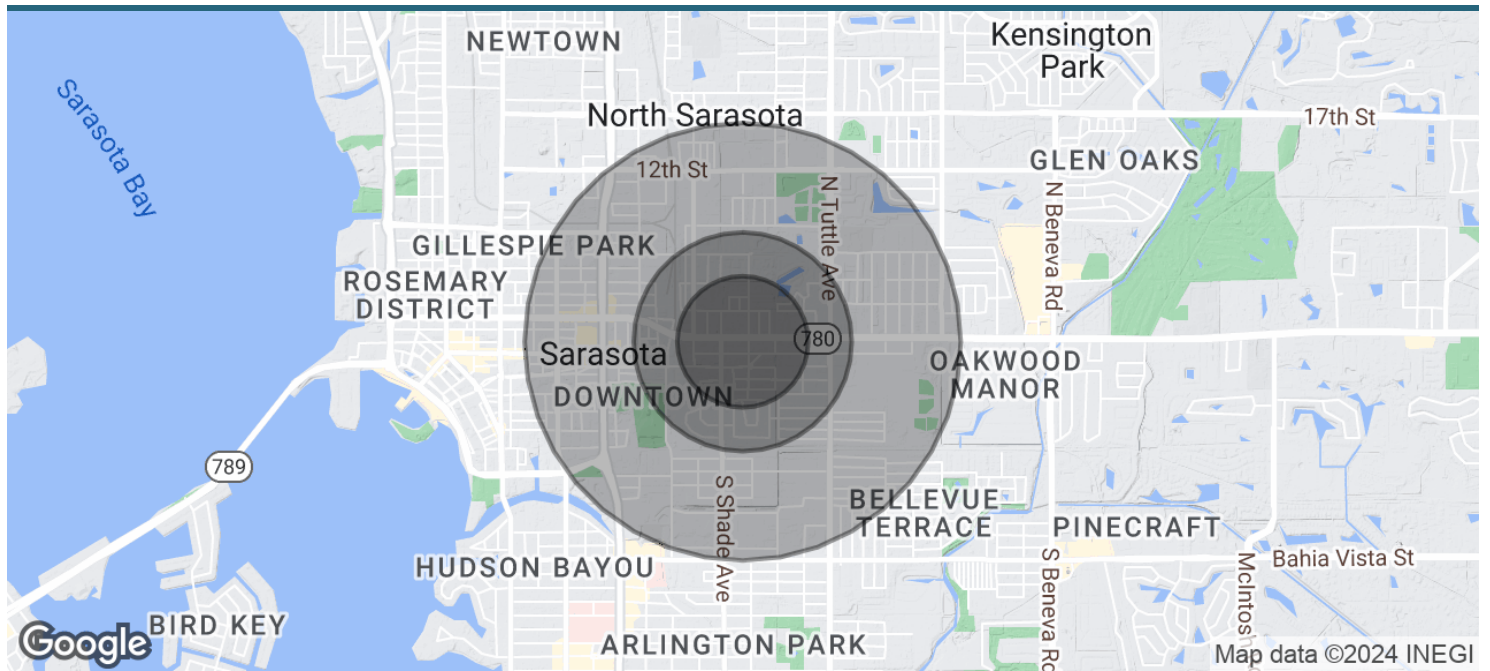


 **DEREK ROBBINS**  
 Broker Associate  
 941.356.4906  
 Derek@RobbinsCommercial.com



# 2480 Fruitville Rd


2480 FRUITVILLE RD SARASOTA, FL 34237



POPULATION	0.3 MILES	0.5 MILES	1 MILE
Total Population	1,293	4,378	13,791
Average Age	45	45	45
Average Age (Male)	44	43	43
Average Age (Female)	46	46	47

HOUSEHOLDS & INCOME	0.3 MILES	0.5 MILES	1 MILE
Total Households	657	2,099	6,060
# of Persons per HH	2	2.1	2.3
Average HH Income	\$78,212	\$78,688	\$84,251
Average House Value	\$396,376	\$487,973	\$522,564

Demographics data derived from AlphaMap



**DEREK ROBBINS**  
 Broker Associate  
 941.356.4906  
 Derek@RobbinsCommercial.com

