



Atlantic
RETAIL



1



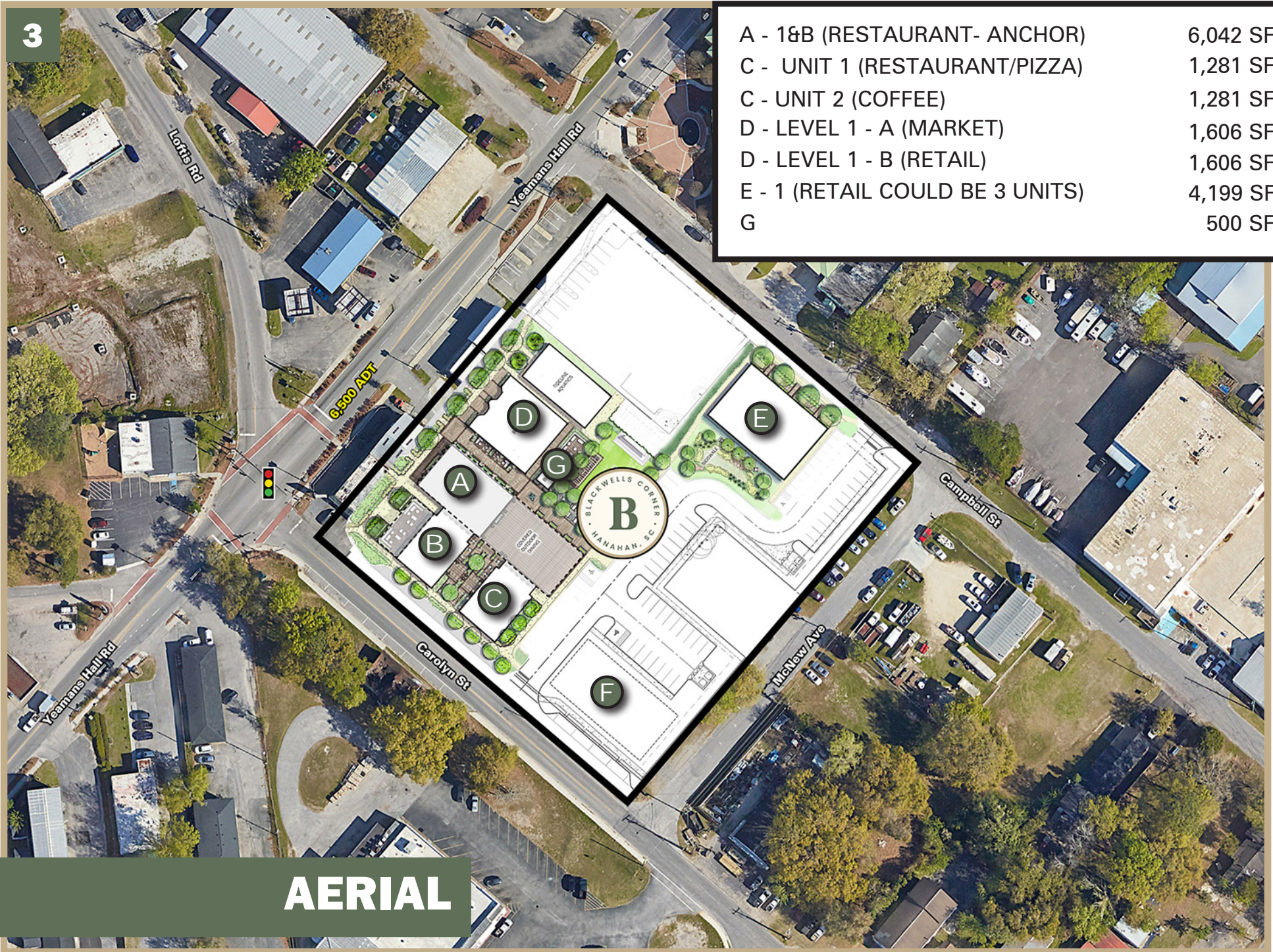
AERIAL



AERIAL

3

A - 1&B (RESTAURANT- ANCHOR)	6,042 SF
C - UNIT 1 (RESTAURANT/PIZZA)	1,281 SF
C - UNIT 2 (COFFEE)	1,281 SF
D - LEVEL 1 - A (MARKET)	1,606 SF
D - LEVEL 1 - B (RETAIL)	1,606 SF
E - 1 (RETAIL COULD BE 3 UNITS)	4,199 SF
G	500 SF



AERIAL



SITE PLAN

GREAT LOCATION - Centrally located in Hanahan, just minutes from Charleston, North Charleston, Park Circle and Goose Creek

BUILT-IN LOYALTY - A community-driven development means customers are ready to support businesses from day one

GROWING DEMAND - Rapid population growth fuels immediate opportunity for dining, shopping and services

PRIME VISIBILITY - Centrally located, Blackwells Corner will be the town's go-to gathering spot

SMART TENANT MIX - Thoughtful planning ensures complementary businesses thrive together

AMPLE PARKING - Convenient, accessible parking designed for shoppers and diners

LONG-TERM GROWTH - Designed for sustainability, this development is a lasting investment in Hanahan's future

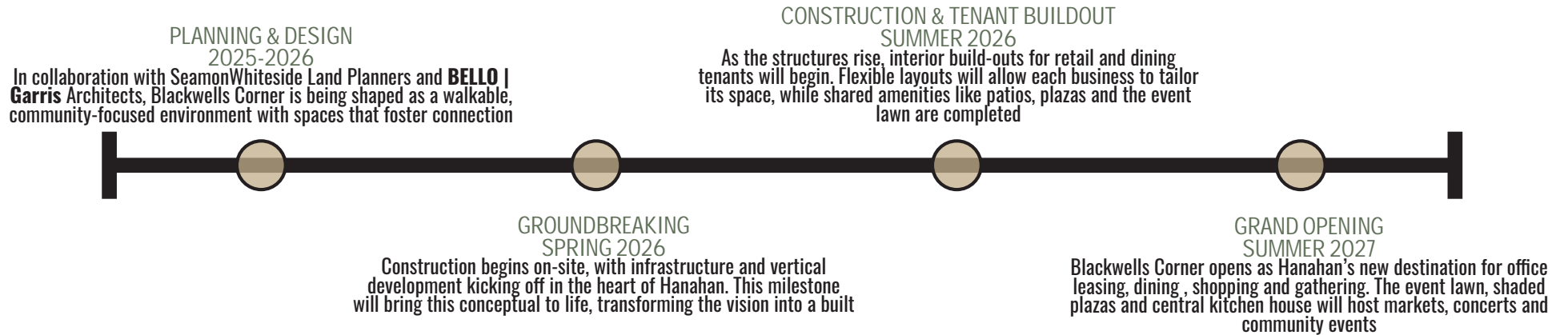


BLACKWELLS CORNER

Blackwells Corner is more than just buildings - it's a local hub. From shaded plazas and outdoor dining to family-friendly gathering spaces and modern leasable office suites, every detail is designed to serve neighbors, families, visitors and local businesses. This new anticipated development is committed to helping tenants thrive with ongoing support and visibility. From city-backed partnerships to on-site management, every resource is in place to ensure steady traffic and brand recognition for dining, retail and office tenants alike.

TIMELINE

FROM VISION TO REALITY

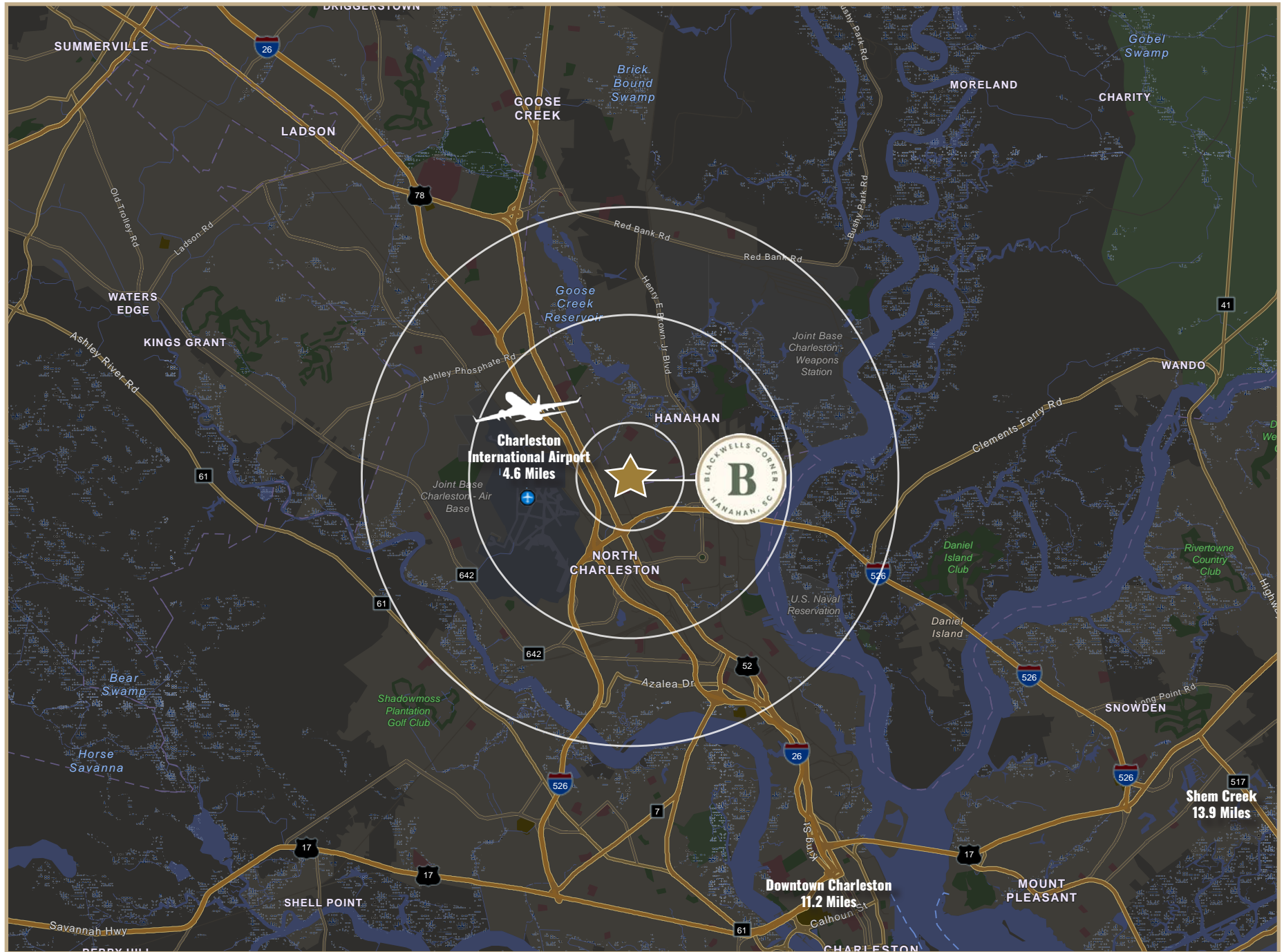






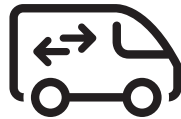






DEMOGRAPHICS

10k VPD
King St Ext



0.96%
Annual Growth Rate



380,000
Employee Population



1 MILE

3 MILES

5 MILES



Total Population

1,932

46,728

131,192



Total Households

738

20,908

61,168



Daytime Population

4,162

54,958

213,657



Median Household
Income

\$52,045

\$69,175

\$83,842



CHARLESTON
320 Wingo Way
Suite 200
Mt. Pleasant, SC
Phone: 843.735.2559



www.atlanticretail.com



[linkedin.com/company/atlantic-retail-properties](https://www.linkedin.com/company/atlantic-retail-properties)



[instagram.com/atlantic_retail](https://www.instagram.com/atlantic_retail)



JOSEPH PURZE

843.735.2559
JPURZE@ATLANTICRETAIL.COM



NED SPRATT

704.998.1891
NSPRATT@ATLANTICRETAIL.COM

CONTACT