



EXECUTIVE OFFICE FOR LEASE

6025 Erin Park Drive
Colorado Springs, CO 80918

PROPERTY SPECIFICATIONS

LOCATION: 6025 Erin Park Drive
Colorado Springs, CO 80918

SPACE AVAILABLE: SUITE C +/- 2,000 SF

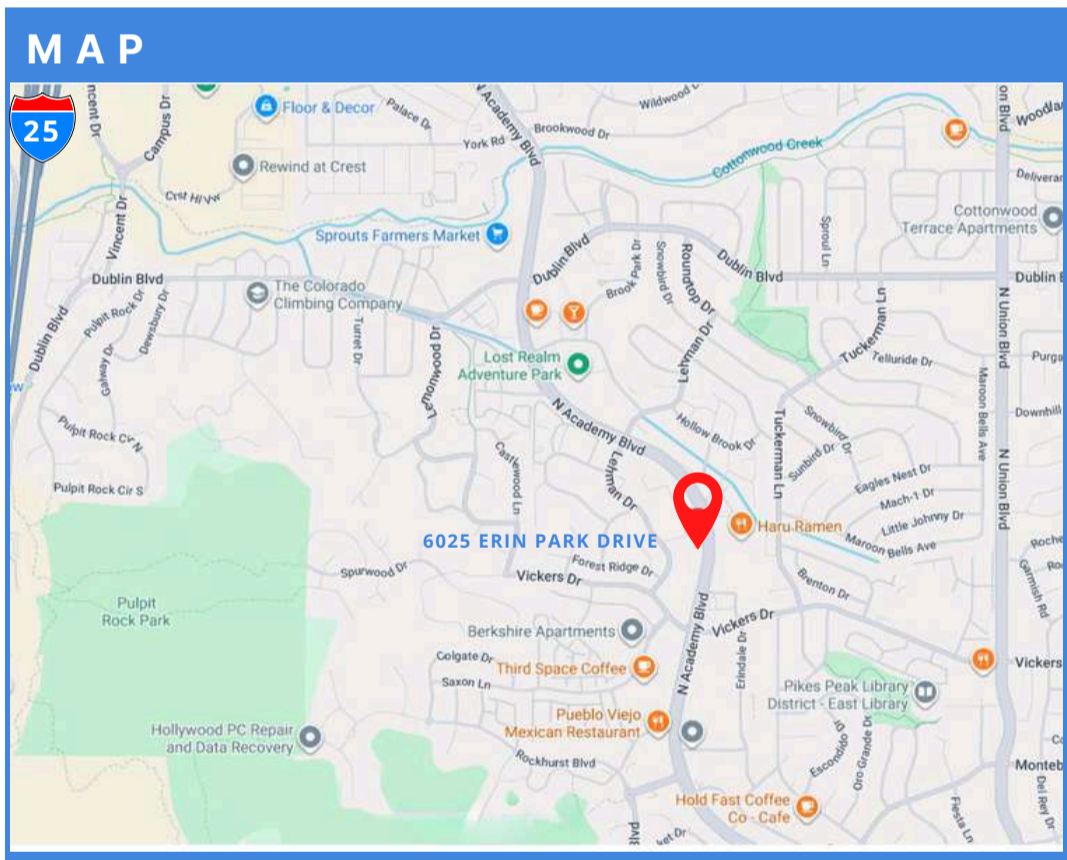
LEASE RATE: \$12 PSF + NNN
NNN \$6 PSF

SUITE COMPONENTS : Offices, Reception, Open office area, and private deck, full kitchen with dishwasher

ZONING: MX-N

ADDITIONAL INFORMATION:

- 44 Surface Parking Spaces
- 10' Ceiling Height
- Glass Office
- Common Area Bathrooms



JASON CASTRO
President



jason@peakcp.net
719.227.9987

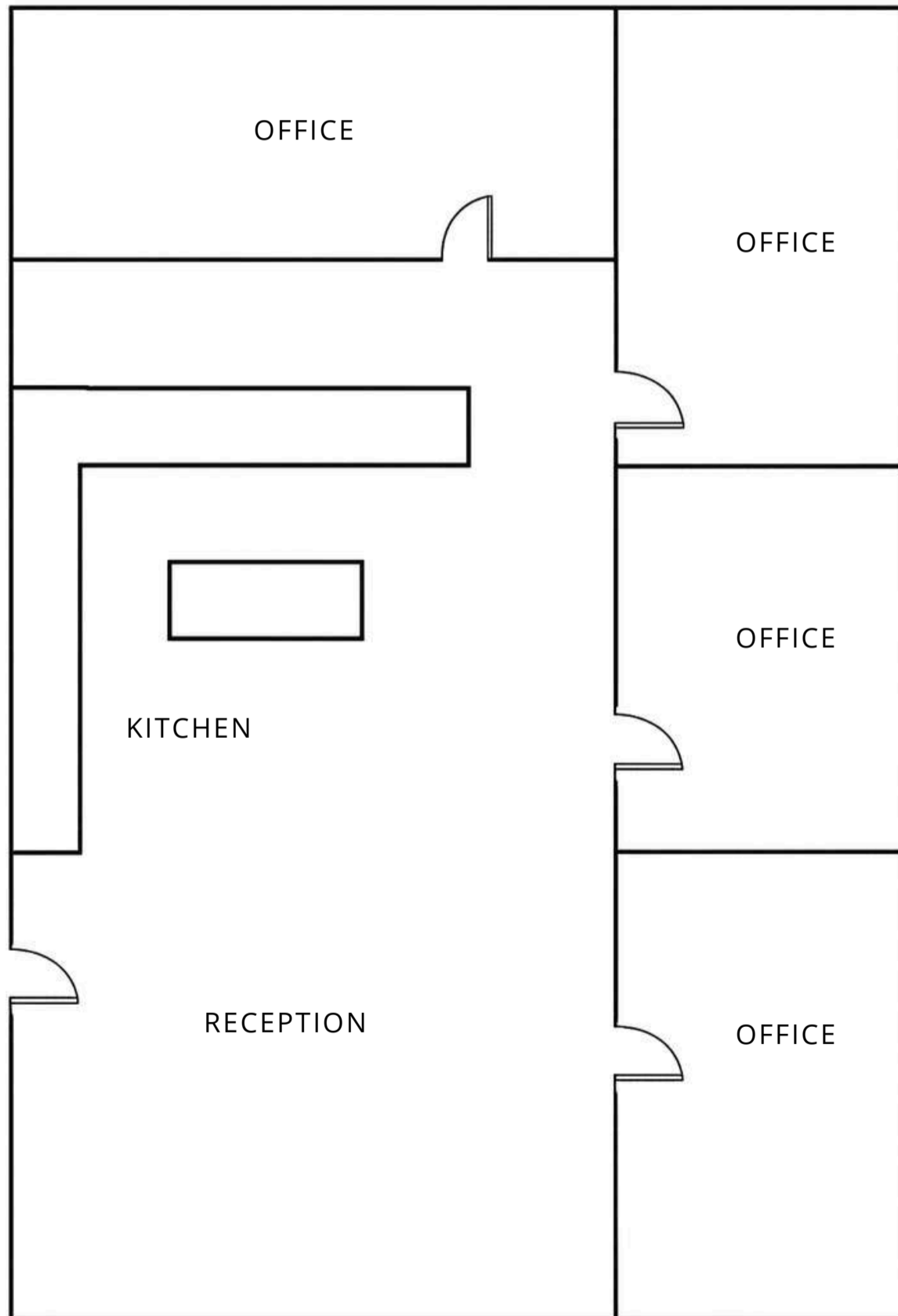
FOR LEASE

6025 Erin Park Drive
Colorado Springs, CO 80918

FLOOR PLAN

Suite C

+/- 2,000 SF



The particulars, details and visuals shown herein are intended to give a general idea of the property. As such, they are not to be relied upon as statements of fact.



2727 N. Cascade Avenue,
Suite 127, Colorado Springs, CO 80907

719.227.9987

www.peakcp.net

Peak Commercial Properties believes information contained herein, while not guaranteed, is from sources they believe reliable. Price, terms, and information are subject to change without notice.