

FOR SALE/LEASE

THE COURTYARD OFFICE PARK



28200-28336 FRANKLIN ROAD
SOUTHFIELD, MI 48034

PROPERTY HIGHLIGHTS:

- 509 to 6,630 SF of general office space available
- Dynamic "Class A" location due to its centralized proximity within the metro Detroit area
- Immediate access to all major medical centers, convention venues, educational facilities, lodging, dining and transportation
- Excellent linkages by way of I-96/I-696/M-5/M-10, Northwestern Hwy and Telegraph Rd
- Abundant parking at a ratio of 4.52 per 1,000 SF of rentable area
- Ownership option
- Individual buildings for sale

The information provided herein along with any attachment(s) was obtained from sources believed to be reliable, however, Friedman Real Estate makes no guarantees, warranties, or representations as to the completeness or accuracy of such information and legal counsel is advised. All information provided is subject to verification and no liability for reliance on such information or errors or omissions is assumed. The presentation of this property is submitted subject to errors, omissions, change of price or conditions, prior sale or lease, or withdrawal without notice. Copyright © 2023 Friedman Real Estate. All rights reserved.

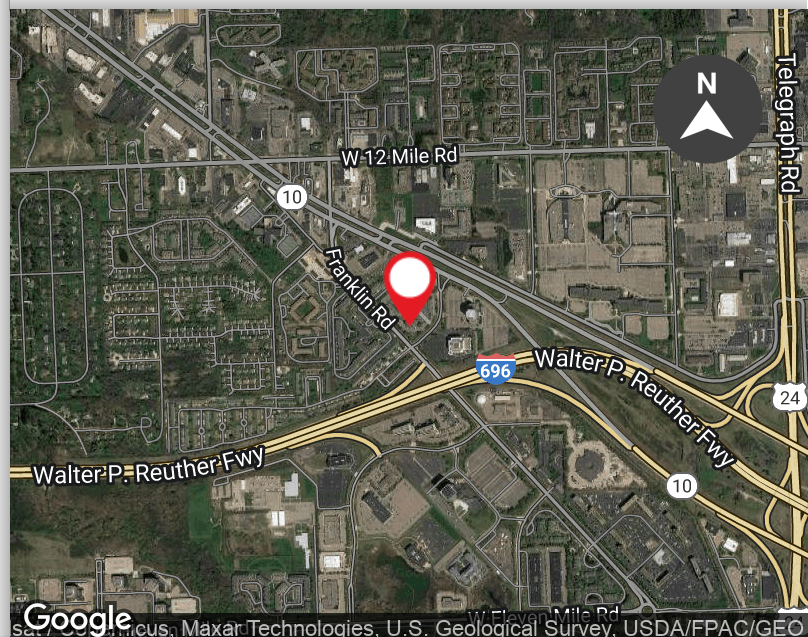
FOR MORE INFORMATION PLEASE CONTACT:

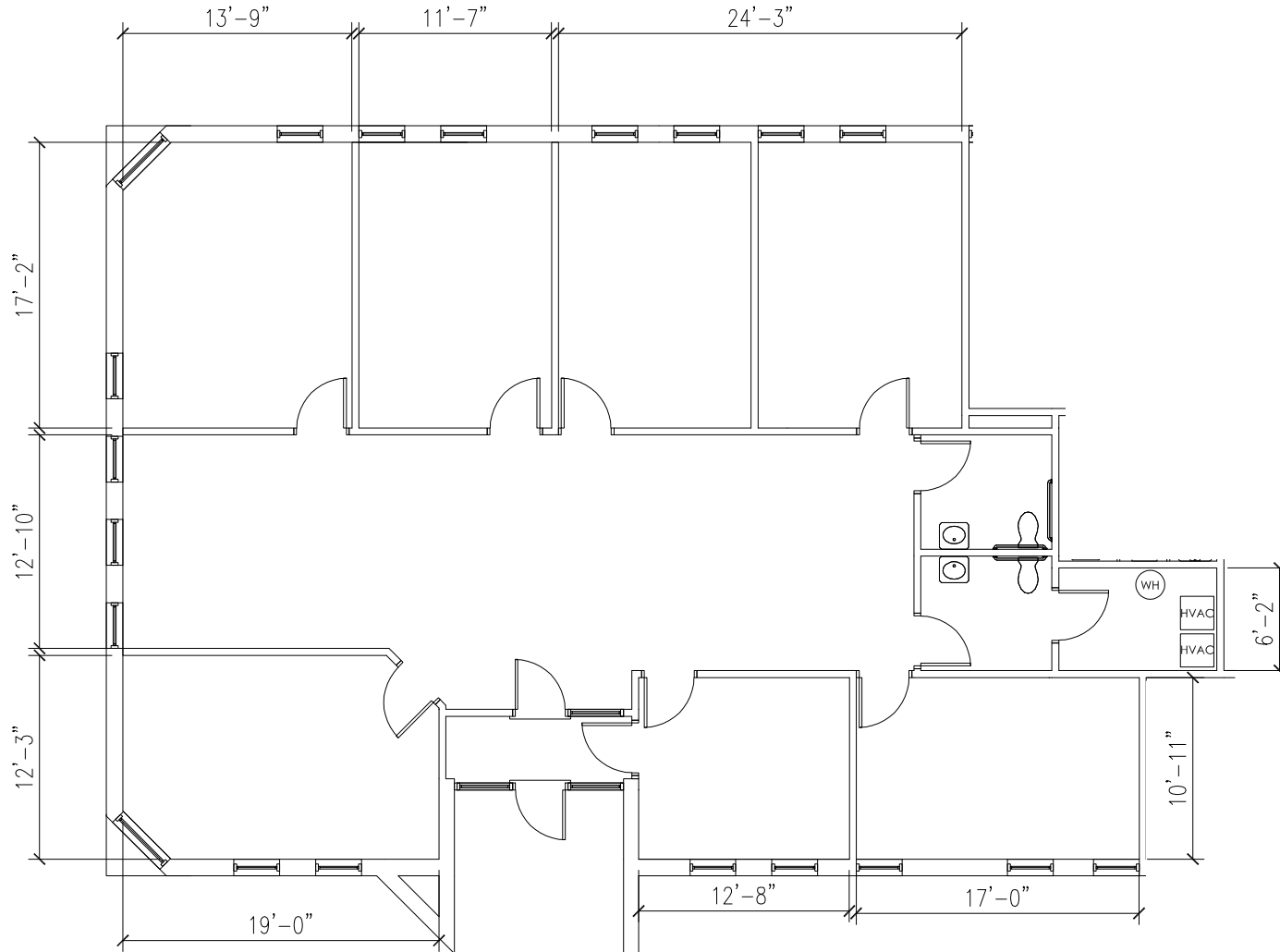


ROBERT MOON
robert.moon@freg.com

248.324.2000

eCODE 509





SCALE :
3/32"=1'-0"

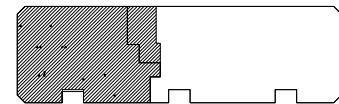


34975 W. Twelve Mile Road
Farmington Hills, MI 48331
Phone: 248.324.2030 Fax: 248.324.9238
Web: www.friedmanrealestate.com

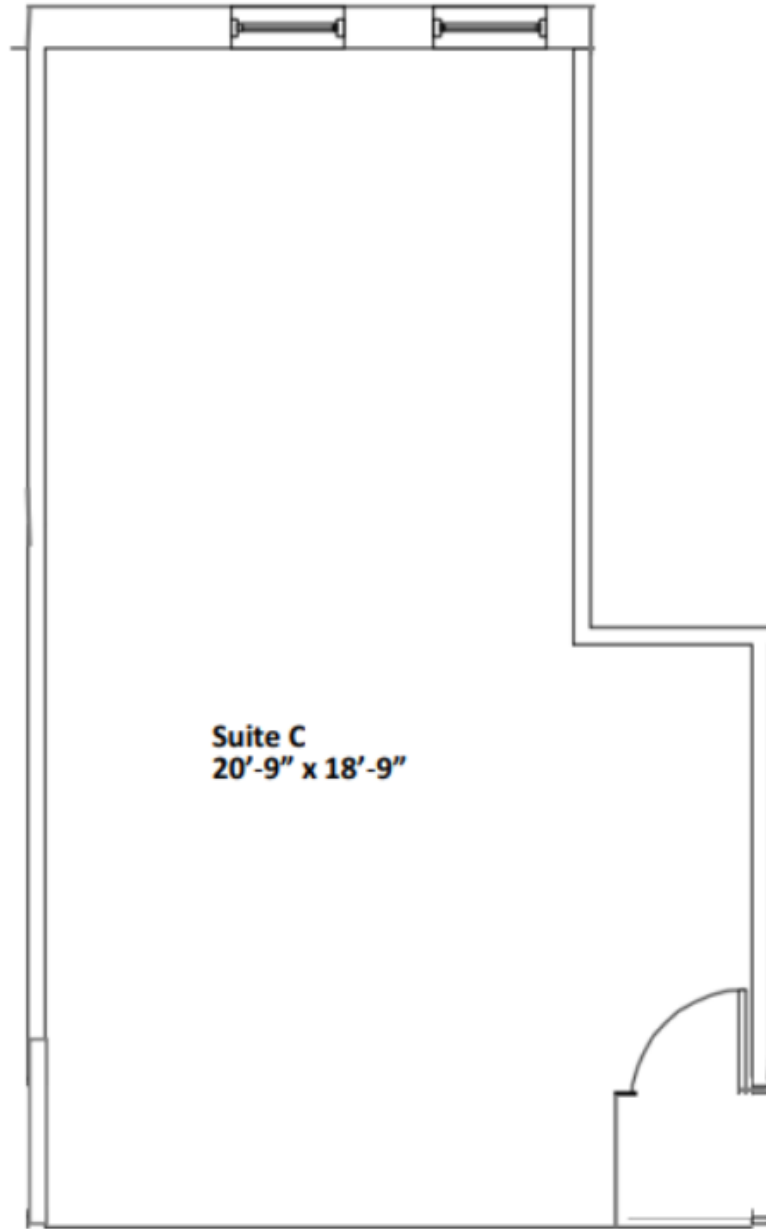
COURTYARD OFFICE PARK
28202 FRANKLIN
SOUTHFIELD, MI

#28202
2,526 SQFT
FOR DETAILS PLEASE CALL
248-324-2000

KEYPLAN



NORTH



DO NOT SCALE



34975 W. Twelve Mile Road
Farmington Hills, MI 48331
Phone: 248.324.2030 Fax: 248.324.9238
Web: www.friedmanrealestate.com

COURTYARD OFFICE PARK

28300 FRANKLIN
SOUTHFIELD, MI

SUITE C
509 TOTAL SF

FOR DETAILS PLEASE CALL
248-324-2000



NORTH