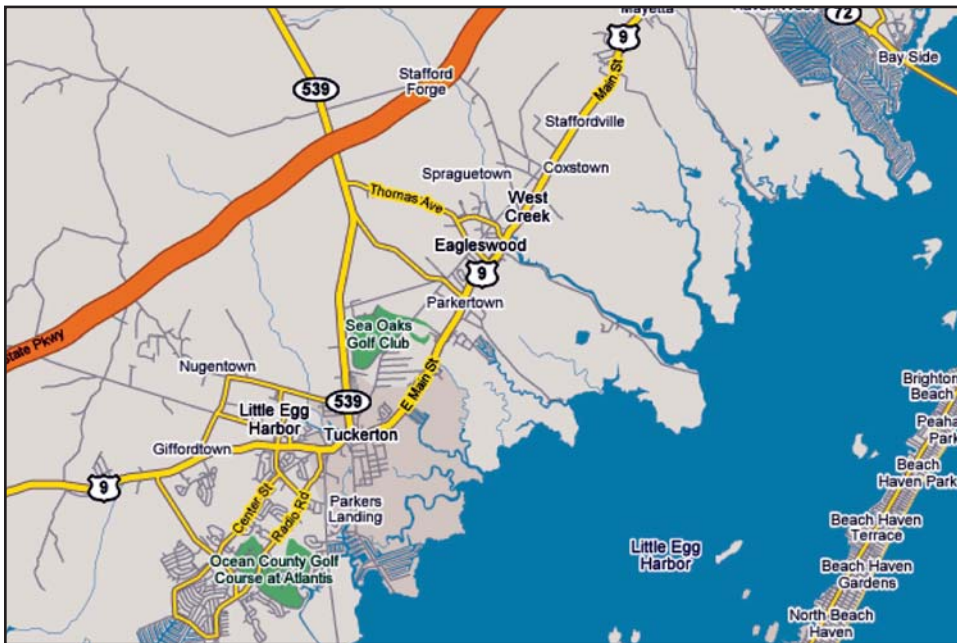
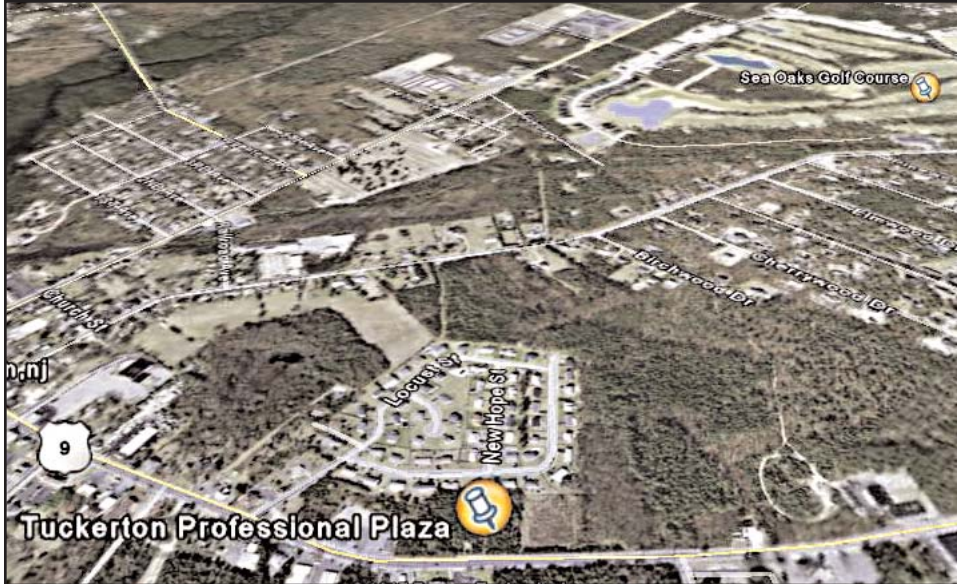


Ideally Located

Main Street – Route 9



Tuckerton Professional Plaza

Ocean County's Premier Office Park
Office Condominiums
From 1,500 SF to 6,000 SF



Contact: Richard Manners (732) 229-7758
richmanners@comcast.net

Features of the Tuckerton Professional Plaza

- > Two 6,000 square-foot buildings
- > Main Street – Route 9 location
- > Cultured stone and premium exterior siding

- > 9 Foot finished ceiling height
- > Extensive landscaping
- > Located in fast-growing southern Ocean County
- > Energy efficient construction
- > Generous window line
- > Municipal water and sewer
- > High-speed Internet available
- > 4+ per/1000 parking

