

**PROPERTY DESCRIPTION** - The subject property is well-located in the downtown core of Victoria located in the Jukebox development. This unit is one of 16 commercial units in this mixed-use development sitting on the south side of View Street opposite the proposed redevelopment of Harris Green by Starlight.

Highlights include:

- 523 sf ground floor unit
- Updated interior finishes throughout
- Retail with workspace
- Plumbing rough-ins for food preparation
- 2 piece washroom
- Access to common area amenities (gym, bike parking)
- Strata fees: \$310.00/month

**ZONING DESIGNATION** – R-48 – Harris Green District

Permitted uses include but are not limited to:

- Offices
- Retail store
- Personal services
- Financial institution

**LEGAL DESCRIPTION**– Strata Lot 10, Lots 1001, 1002, 1003, and 1004, Victoria City, Strata Plan EPS5860 – PID: 030-755-646

**SIZE**- 523 SF

**PRICE**- \$445,000.00

## Get more information

### Dave Bornhold

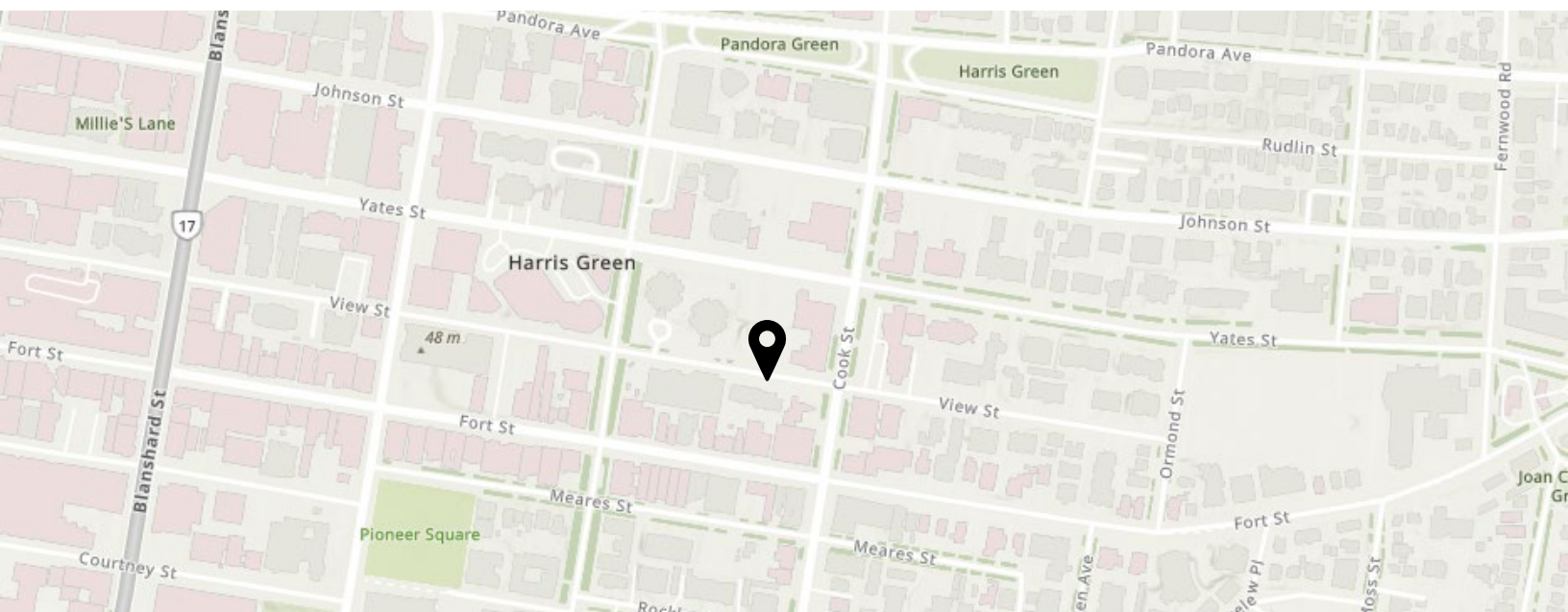
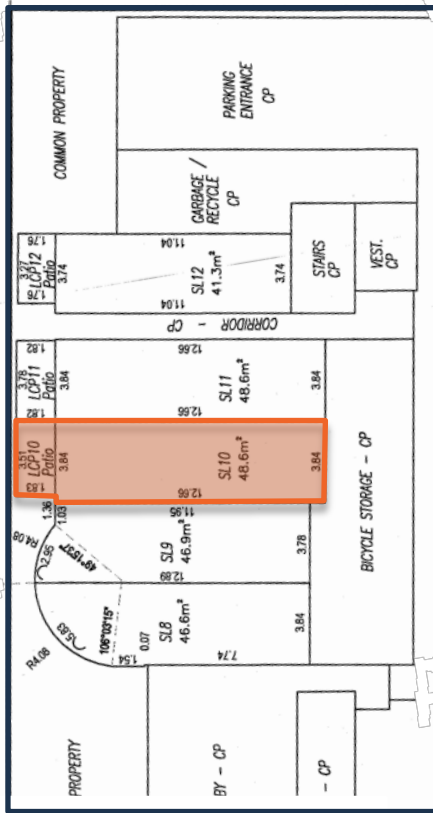
Personal Real Estate Corporation  
Senior Vice President  
Managing Broker  
D 250 382 3400  
C 250 686 2988  
dave.bornhold@avisonyoung.com

avisonyoung.com



# Strata Retail For Sale

Unit 103 – 1029 View Street  
Victoria, BC



## For further Information

**Dave Bornhold** Personal Real Estate Corporation  
Senior Vice President  
Managing Broker  
D 250 382 3400 C 250 686 2988  
dave.bornhold@avisonyoung.com

