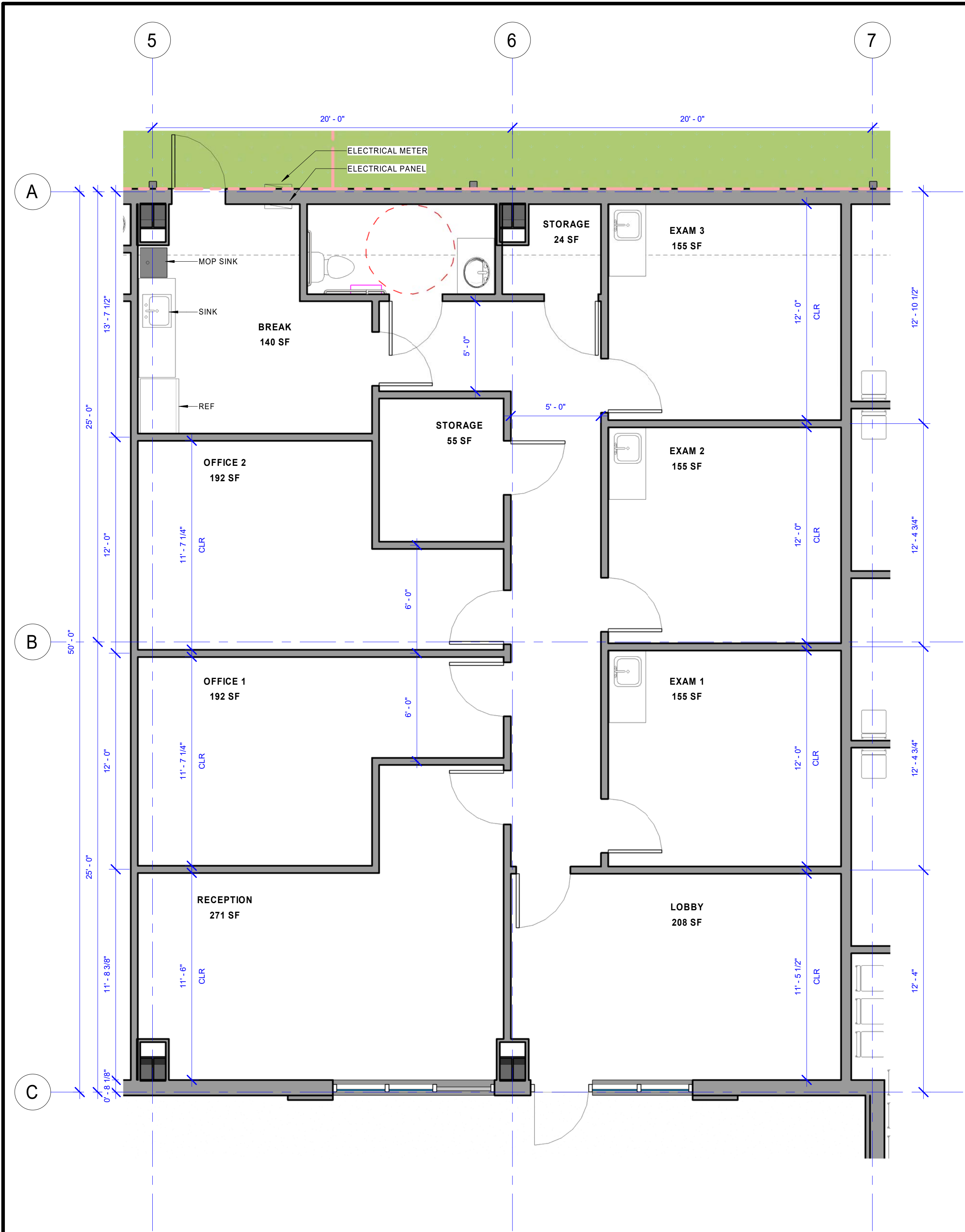
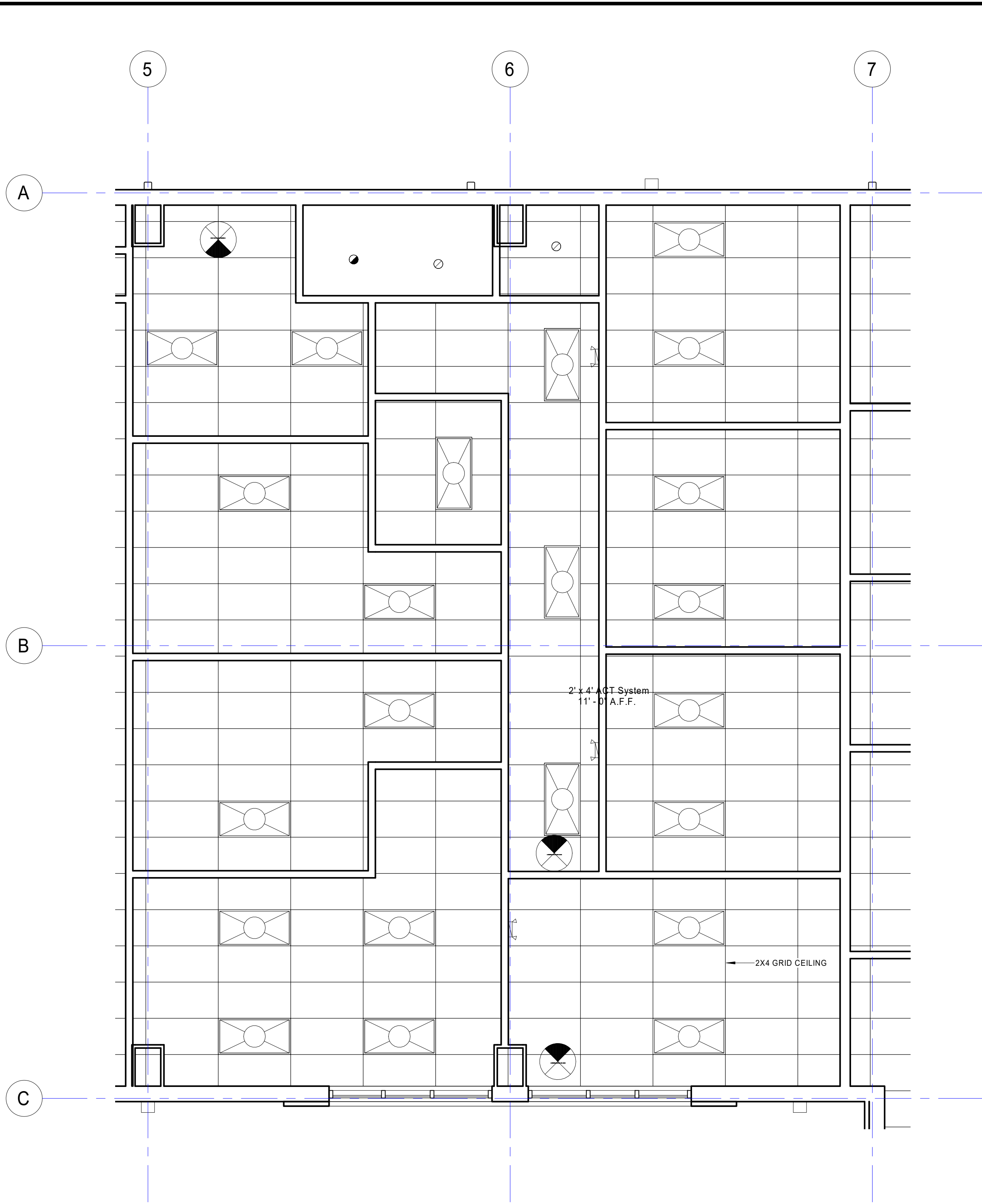


© 2023 JOHN SANFORD ARCHITECTS. ALL PLANS, SPECIFICATIONS, COMPUTER FILES AND OTHER DOCUMENTATION PREPARED BY JOHN SANFORD ARCHITECTS ARE CONSIDERED INSTRUMENTS OF SERVICE AND SHALL REMAIN THE PROPERTY OF JOHN SANFORD ARCHITECTS. JOHN SANFORD ARCHITECTS SHALL RETAIN ALL COMMON LAW, STATUTORY AND OTHER RESERVED RIGHTS, INCLUDING THE COPYRIGHT THEREIN. ANY REUSE, REPRODUCTION, RECREATION AND/OR REPRINTING WITHOUT WRITTEN PERMISSION IS PROHIBITED. ALL THIRD PARTY ALTERATIONS TO INSTRUMENTS OF SERVICE ISSUED BY JOHN SANFORD ARCHITECTS ARE PROHIBITED.



① SPACE C 1215 N. BIRCH  
1/4" = 1'-0"



② SPACE C1215 N. BIRCH RCP  
1/4" = 1'-0"

| Lighting Fixture Schedule  |       |                 |
|--|-------|-----------------|
| Type   | Image | Family and Type |
| Downlight - Recessed Can: 6" Incandescent - 120V                           |       | Count           |
| Emergency Wall Light: 120V   |       |                 |
| Exhaust Vent: Exhaust Vent   |       |                 |
| Exit Sign_Enlarged graphic: Exit Sign_Enlarged graphic                     |       |                 |
| LED Disc Light_Antimicrobial: LED ANTIMICROBIAL                            |       |                 |
| Lighting_Fixture-LSI -LED_Wall_Lights_TMWP: Not A Type - Load Type Catalog |       |                 |
| Troffer Light - 2x4 Parabolic: 2'x4'(2 Lamp) - 120V                        |       |                 |
| VANITY LIGHT: Not A Type - Load Type Catalog                               |       |                 |

THESE DRAWINGS ARE PRELIMINARY IN NATURE AND INTENDED FOR REVIEW AND PERMITTING. DRAWINGS ARE NOT TO BE USED FOR CONSTRUCTION WITHOUT ARCHITECTS' AND ENGINEER'S SIGNATURE AND THEIR DATE OF ISSUE FOR CONSTRUCTION.

JSA

ARCHITECTS

9728 E. 42nd St. SUITE 153  
TULSA, OK 74146  
918.640.6800  
JHNSANFORD@AOL.COM

Copyright 2022 John Sanford  
JOHN SANFORD,  
AIA, NCARB  
OKLAHOMA LICENSE # 2773

06.13.2023

NOT VALID FOR CONSTRUCTION UNLESS SIGNED IN THIS BLOCK

BA NORTH ROSE LOT 2\_2

1215 N BIRCH AVE  
BROKEN ARROW, OK

PERMIT NO: -----  
6/13/2023  
3:56:46 PM

| No. | Description | Date |
|-----|-------------|------|
|     |             |      |
|     |             |      |
|     |             |      |
|     |             |      |
|     |             |      |
|     |             |      |
|     |             |      |

SHEET

A412

TENANT C  
1215 N. BIRCH