

OFFICE SPACE IN THE HEART
OF SCOTT'S ADDITION



FOR LEASE

2939 W. Marshall Street
Richmond, VA 23230

Jimmy Appich

T +1 804 200 6420
jimmy.appich@jll.com

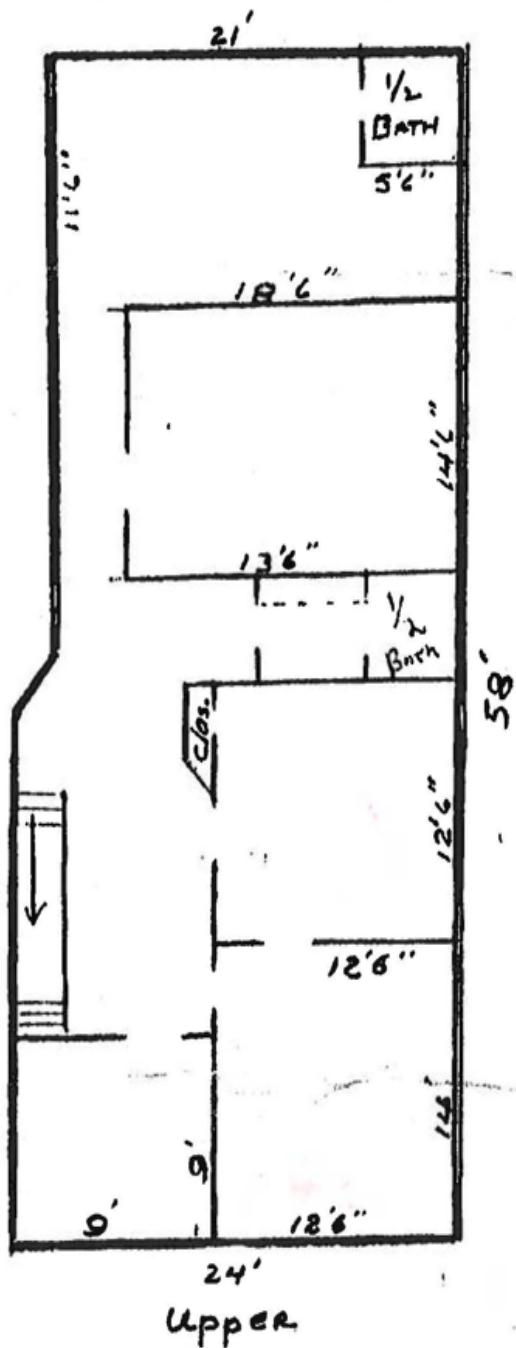


PROPERTY OVERVIEW

- > 1,400 SF office space
- > Available now
- > Located in the heart of Scott's Addition
- > Ideally positioned just one block from West Broad Street
- > Excellent access from I-195 / Downtown Expressway
- > Great walkability to restaurants, breweries, fitness facilities, and newly built loft apartments

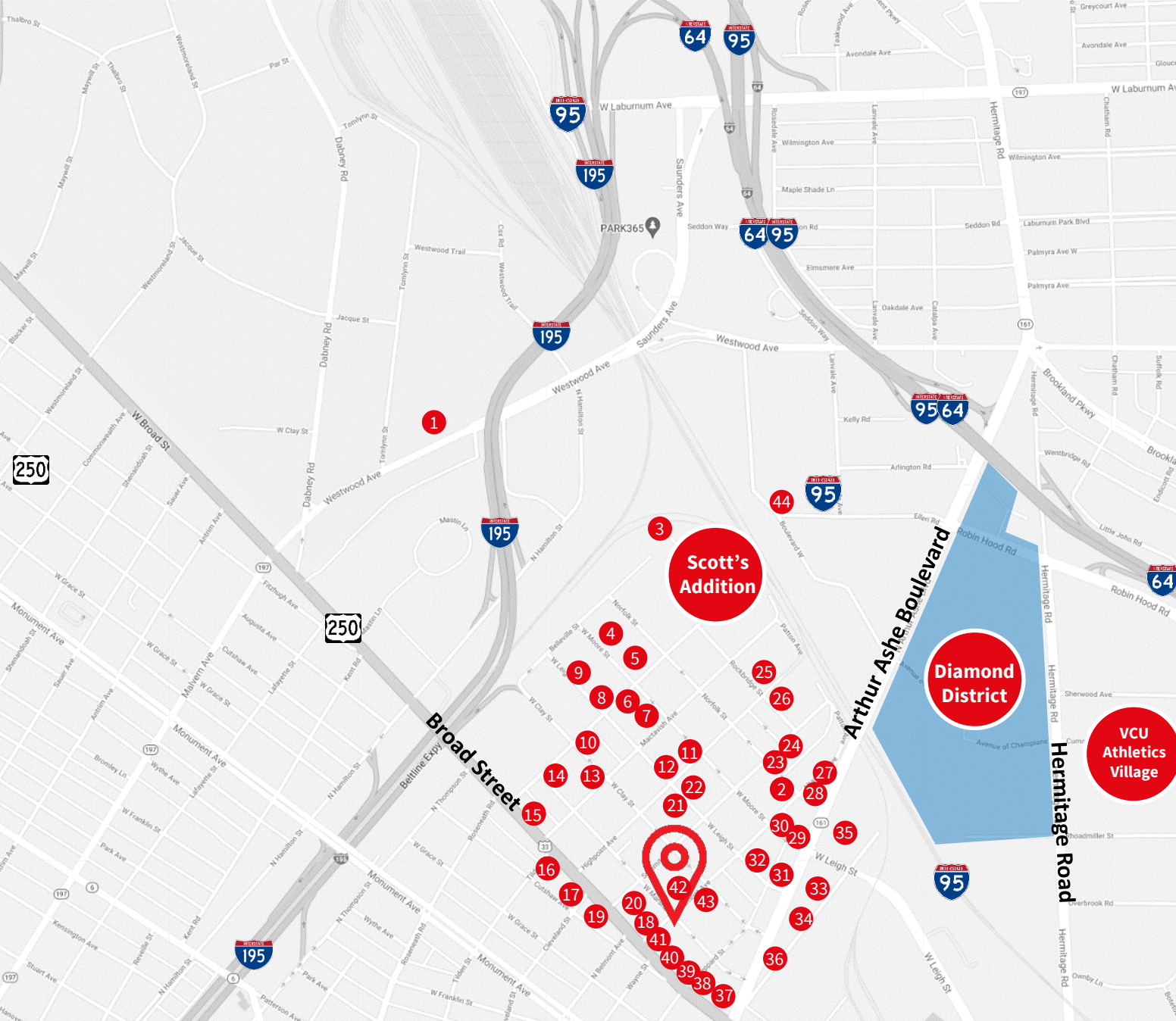


FLOOR PLAN



AMENITIES

1. Topgolf
2. Pinky's
3. Brambly Park Winery
4. Tang & Biscuit
5. The Dairy Bar
6. Stella's Grocery
7. Vasen Brewing Co.
8. Tazza Kitchen
9. Starr Hill Beer Hall
10. Wood & Iron
11. ZZQ Texas BBQ
12. Ardent Craft Ales
13. Slingshot Social
14. The Veil Brewing Co.
15. Don't Look Back
16. Lemon of India
17. McLeans
18. Cabo Fish Taco
19. Blanchard's Coffee
20. Supper
21. Circuit Arcade Bar
22. Strangeways Brewing
23. Isley Brewing Co
24. Lamplighter Coffee
25. Brenner Pass
26. Hive Salon
27. Potbelly Sandwich
28. Gelati Celesti
29. Boulevard Burger & Brew
30. Moore Street Café
31. Fat Dragon
32. Buskey Cider
33. Buz and Ned's BBQ
34. Starbucks
35. Bowtie Cinema
36. En Su Boca
37. Peter Chang's
38. The Hof Garden
39. Bingo
40. Kismet Modern Indian
41. Three Notch'd Brewing
42. Recluse Coffee Bar
43. Longoven
44. Ruff Canine Club



Jimmy Appich

T +1 804 200 6420
jimmy.appich@jll.com

Although information has been obtained from sources deemed reliable, JLL does not make any guarantees, warranties or representations, express or implied, as to the completeness or accuracy as to the information contained herein. Any projections, opinions, assumptions or estimates used are for example only. There may be differences between projected and actual results, and those differences may be material. JLL does not accept any liability for any loss or damage suffered by any party resulting from reliance on this information. If the recipient of this information has signed a confidentiality agreement with JLL regarding this matter, this information is subject to the terms of that agreement. ©2022. Jones Lang LaSalle IP, Inc. All rights reserved.

