

# RETAIL SPACE FOR LEASE

 8407 Main Street,  
Ellicott City, MD 21043

- Total Space Available: 1,700 SF
- Property Type: Retail
- Property Subtype: Storefront Retail/Office

## PROPERTY OVERVIEW


Ellicott City is renowned for its high quality of life, featuring top-rated schools, parks, and a vibrant cultural scene. The property is within walking distance to a variety of restaurants and shops, making it an attractive spot for both employees and customers. With a median household income of approximately \$157,891 and a highly educated population, the area promises a robust customer base and a talented workforce. 8407 Main St stands out with its strategic location, modern amenities, and the rich cultural tapestry of Ellicott City. This property is not just a place of business; it's a gateway to growth and success in a thriving community.

## KEY HIGHLIGHTS

- Modern office building with a huge variety of amenities
- Less than 1 minute from B & O Ellicott City Station Museum
- Lots of windows overlooking Main Street with ample parking
- Second-floor walk-up offices
- Walk to restaurants and unique shops
- Call 410-707-7054 for a tour



**DONALD REUWER**

 410-707-7054

 dreuwer@ldandd.com

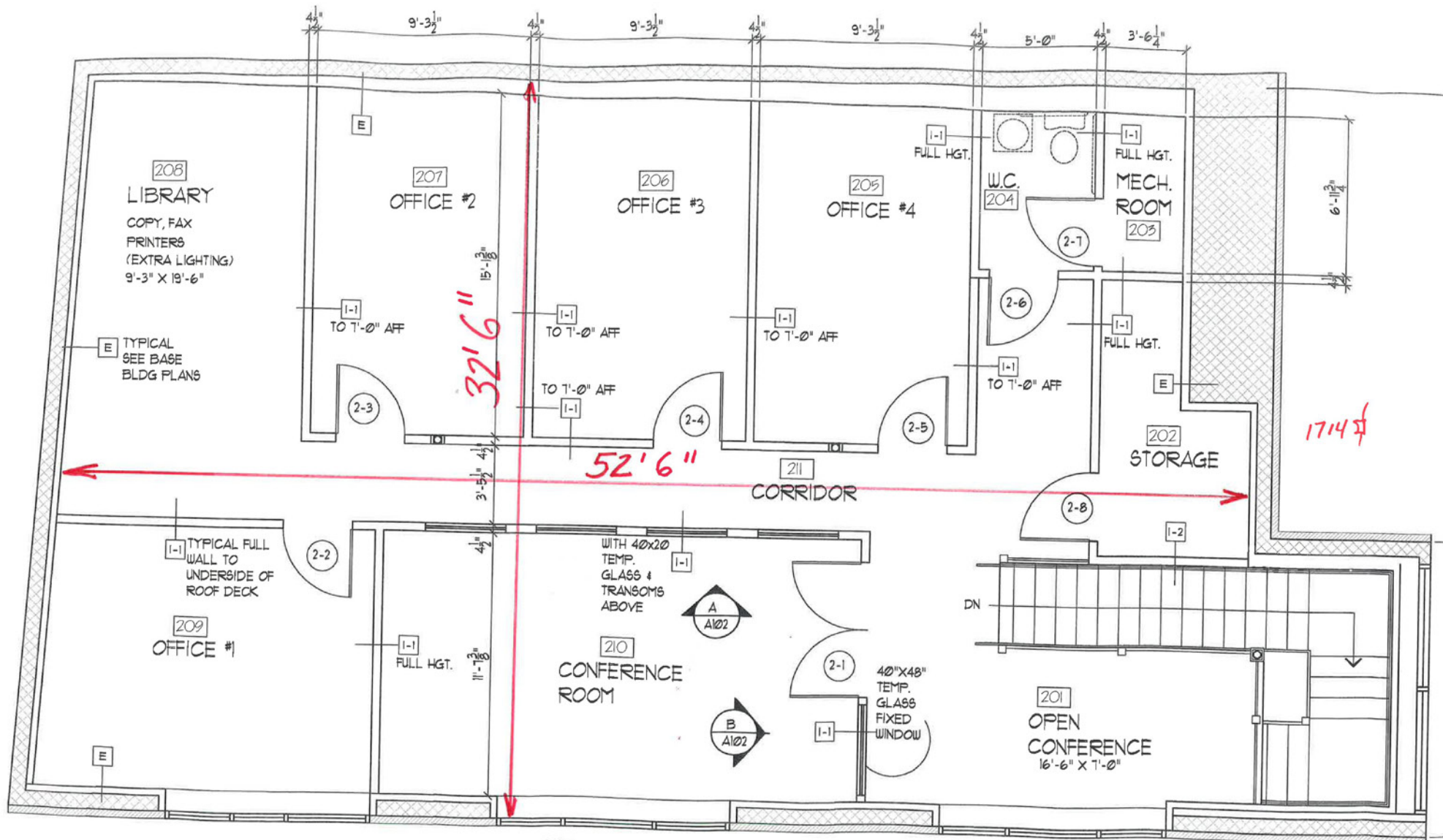


*All information is from sources deemed reliable and is submitted subject to errors, omissions, change of price, terms, prior sales and withdrawals.*

# RETAIL SPACE FOR LEASE

8407 Main Street,  
Ellicott City, MD 21043

## FLOOR PLAN



# RETAIL SPACE FOR LEASE

 **8407 Main Street,  
Ellicott City, MD 21043**

## MIDRANGE AERIAL



*All information is from sources deemed reliable and is submitted subject to errors, omissions, change of price, terms, prior sales and withdrawals.*