

FOR LEASE HIGH BAY WAREHOUSE

Corporate Landing Pkwy Virginia Beach, VA



CONSTRUCTION BEGINS: MAY 2026

ABOUT PROPERTY

- 50,000 SF - 100,320 SF (Subdividable)
- Office - Build-to-Suit
- ESFR Fire Suppression
- 28' Clear Ceiling Height
- 4 Dock Doors with Dock Levelers
- 3 Grade-Level Doors
- 3,000 amps, 480 volt, 3-phase electrical service
- Building Dimension - 209' x 480'
- 30' x 69' Column Spacing
- 205 parking spaces
- 6" Reinforced Concrete Slab
- Foreign Trade Zone Eligibility
- Dominion Energy Certified Data Center Park
- Conditional I-L (Light Industrial) Zoning
- Rental Rate: Call Agent



For more information:

BOBBY BEASLEY, III, SIOR

757.640.8241

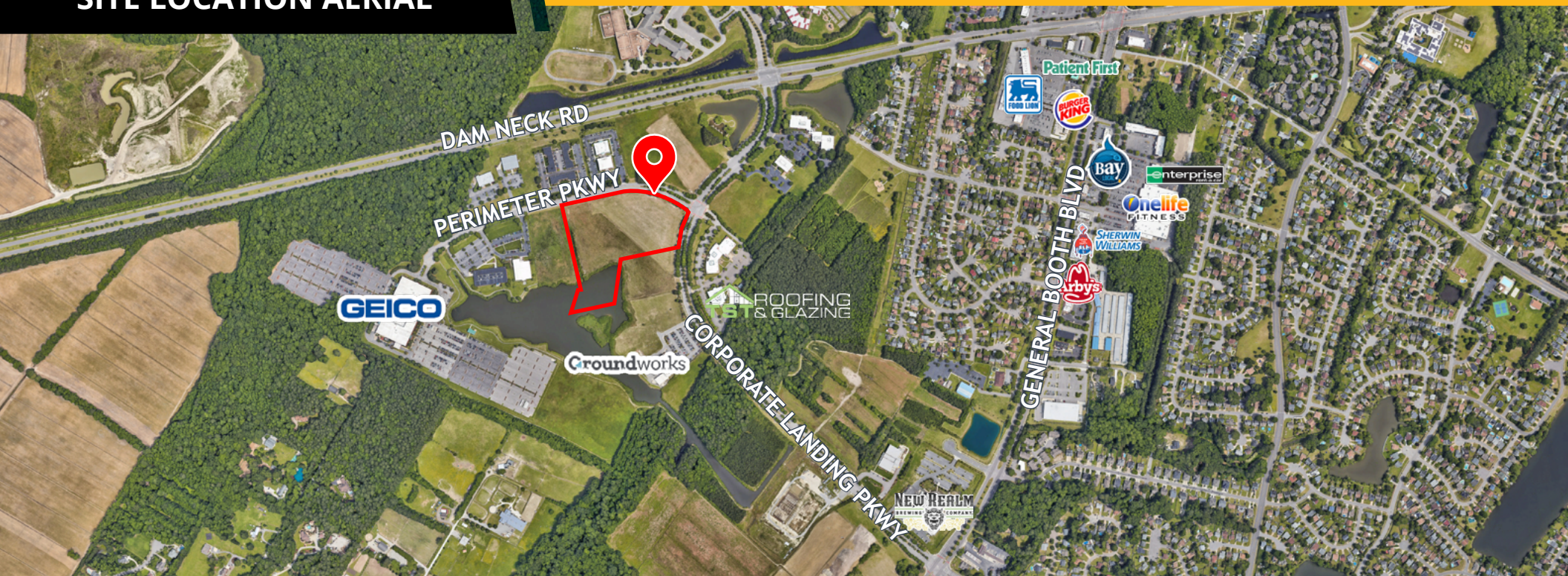
BobbyBeasley3@HarveyLindsay.com

HARVEY LINDSAY
COMMERCIAL REAL ESTATE

www.harveylindsay.com

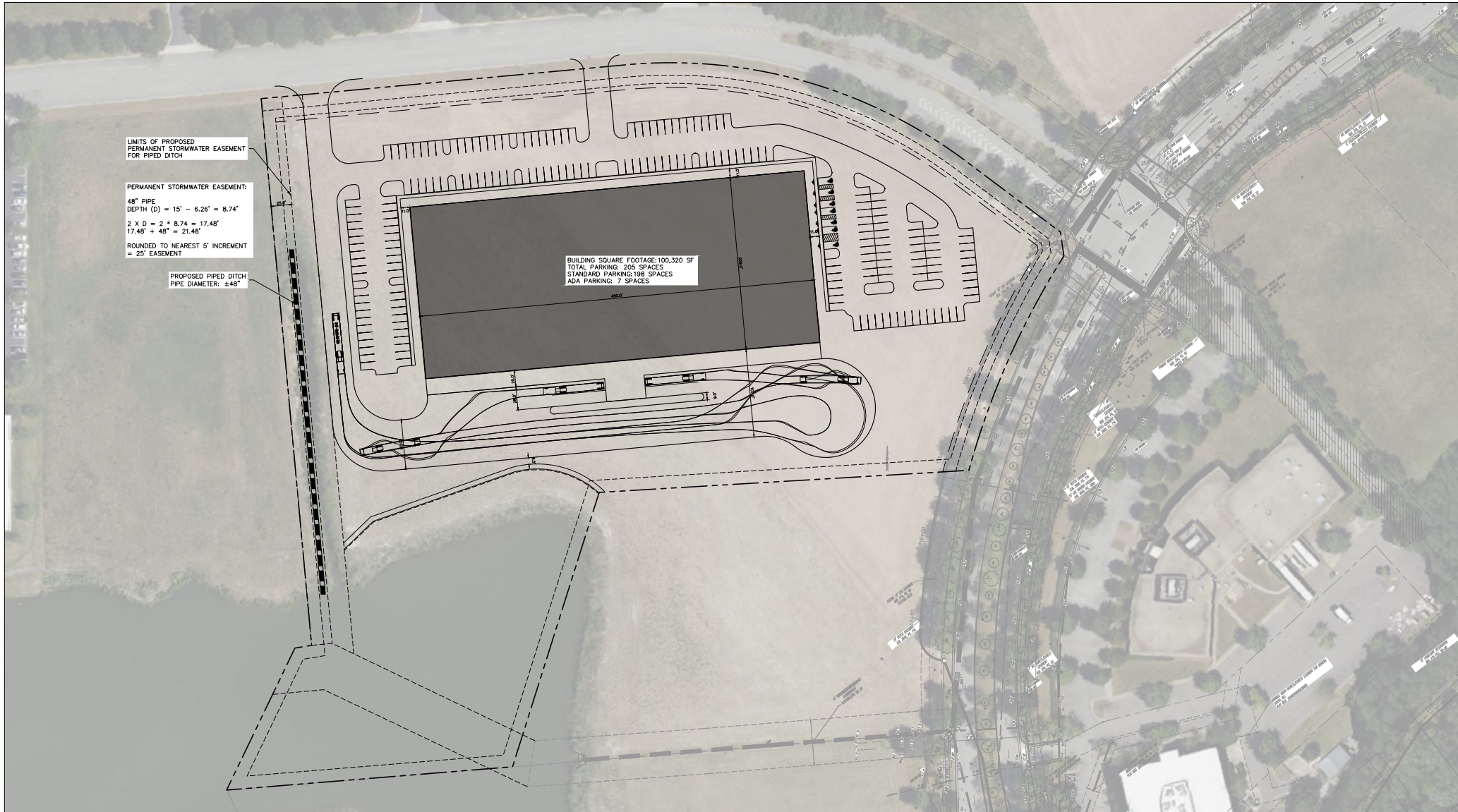
SITE LOCATION AERIAL

HIGH BAY WAREHOUSE | Corporate Landing Pkwy, Virginia Beach, VA



The information contained herein has been obtained from sources believed to be reliable but is not warranted. We cannot be responsible for errors, omissions, withdrawal, or prior lease or sale.

HARVEY LINDSAY
COMMERCIAL REAL ESTATE





For more information:
BOBBY BEASLEY, III, SIOR
757.640.8241
BobbyBeasley3@HarveyLindsay.com

825 Dilligence Drive • Suite 114
Newport News, Virginia 23666
757-873-2020
www.HarveyLindsay.com

HARVEY LINDSAY
COMMERCIAL REAL ESTATE