

FOR SALE

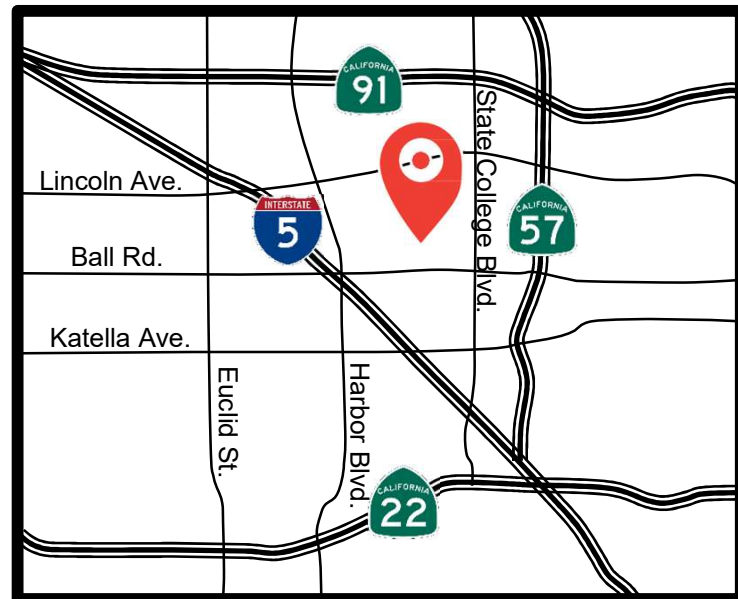
± 7,110 SF FREE STANDING INDUSTRIAL BUILDING



920-922 E. ARLEE PLACE ANAHEIM, CA 92805

Property Overview

- Building Divides into Two (2) Separate Addresses
- Two (2) Ground Level Loading Doors
- ± 16' Clear Height
- Power Distributed
- Private Fenced Yards with Secure Gate
- Upgraded Office and Restrooms
- Excellent Freeway Access 57, 5, 91, 22 Fwys
- Call to Schedule a Building Tour

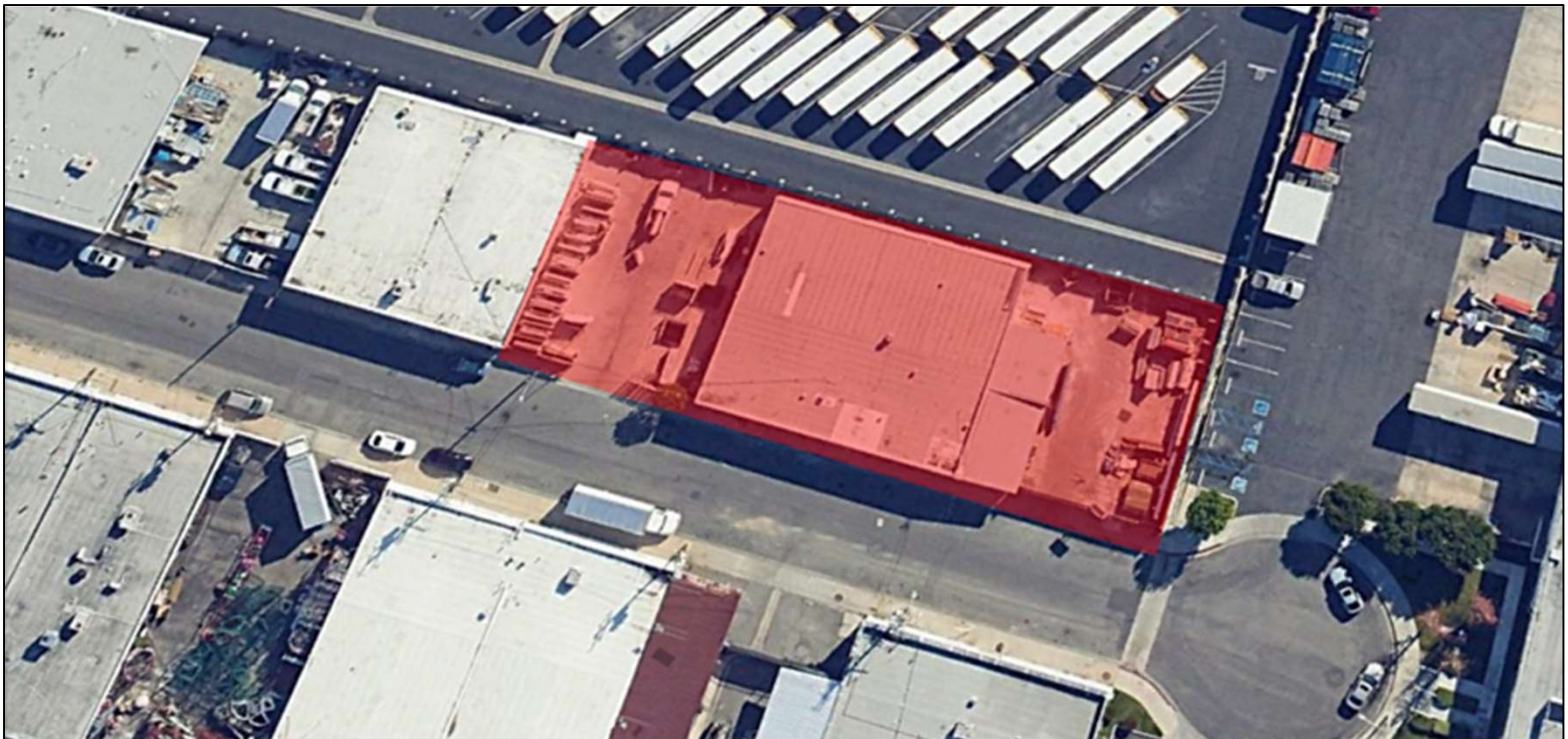


**Map Not to Scale*

The information contained herein has not been verified by real estate brokers. Although we have no reason to doubt its accuracy we do not guarantee it. Buyers and tenant should verify information independently.

AERIAL VIEW

920-922 E. ARLEE PLACE | ANAHEIM, CA 92805



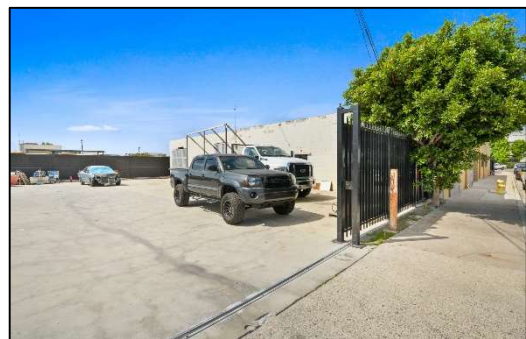
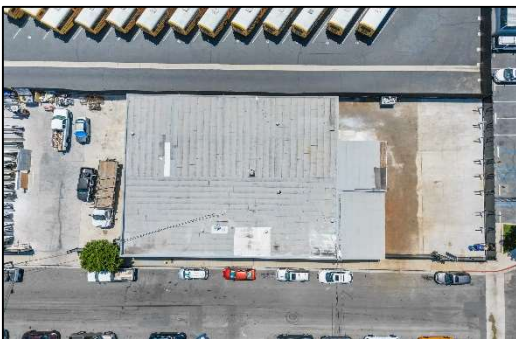
**Ashwill
Associates**
COMMERCIAL REAL ESTATE
Corp DRE#01291393

STEVEN CRANE
Executive Vice President
(714) 856-2923
CA DRE Lic# 00844752
SteveC@ashwillassociates.com

GARY MARTINEZ, CCIM, SIOR
Senior Vice President
(714) 905-9383
CA DRE Lic# 01318932
gary@ashwillassociates.com

PROPERTY PHOTOS

920-922 E. ARLEE PLACE | ANAHEIM, CA 92805



**Ashwill
Associates**
COMMERCIAL REAL ESTATE
Corp DRE#01291393

STEVEN CRANE
Executive Vice President
(714) 856-2923
CA DRE Lic# 00844752
SteveC@ashwillassociates.com

GARY MARTINEZ, CCIM, SIOR
Senior Vice President
(714) 905-9383
CA DRE Lic# 01318932
gary@ashwillassociates.com

PROPERTY PHOTOS

920-922 E. ARLEE PLACE | ANAHEIM, CA 92805



Corp DRE#01291393

STEVEN CRANE
Executive Vice President
(714) 856-2923
CA DRE Lic# 00844752
SteveC@ashwillassociates.com

GARY MARTINEZ, CCIM, SIOR
Senior Vice President
(714) 905-9383
CA DRE Lic# 01318932
gary@ashwillassociates.com