

TOK

COMMERCIAL

JEFFERSON BLDG

OFFICE SPACE / 915 W JEFFERSON ST, BOISE, ID 83702

**PRIME DOWNTOWN
OFFICE LOCATION**

PAT SHALZ, SIOR

208.947.0834

pat@tokcommercial.com

AL MARINO, SIOR

208.947.0811

al@tokcommercial.com

LANCE HENDRICKS

208.957.5623

lance@tokcommercial.com

HIGHLIGHTS

- Prime Downtown Boise location!
- Great art deco space.
- Fiber to the building.
- Two dedicated parking stalls.
- Walking distance to the core of downtown retail & restaurants.

DETAILS

SPACE:	RSF:	RATE:
1st Floor	2,397 SF	Contact Agent
2nd Floor	2,107 SF	Contact Agent

SUBMARKET	Downtown	PARKING	2 Stalls + Street
BLDG TYPE	Office/Retail	LEASE RATE	Contact Agent
BLDG SIZE	8,276 SF	LEASE TYPE	NNN

CONTACT

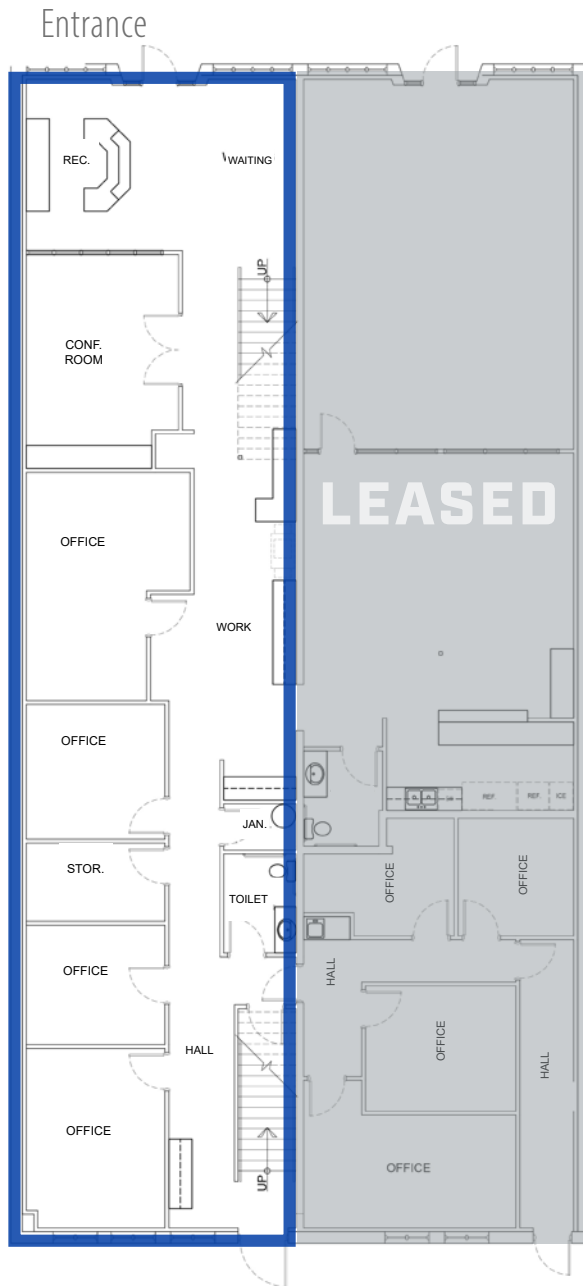


UPDATED: 11.20.2025
THIS PROPERTY IS EXCLUSIVELY MARKETING BY TOK BOISE LLC DBA TOK COMMERCIAL.



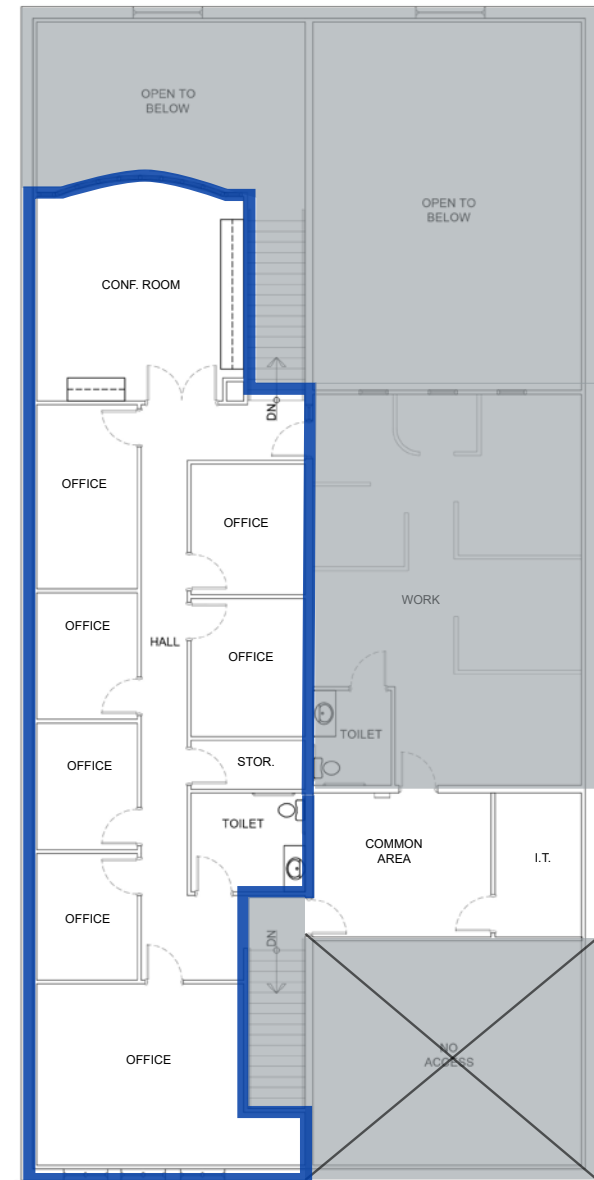
TOKCOMMERCIAL.COM

FIRST FLOOR



APPROX. 2,397 SF

SECOND FLOOR



APPROX. 2,107 SF





9TH STREET

915
JEFFERSON

10TH STREET

JEFFERSON ST



DOWNTOWN PARKING!



SITE