

FOR LEASE

2,000-7,160 SF

The Design Center Retail/Office Space

2127 S Hwy 97, Redmond, OR 97756



CLASS A BUILDING ON HIGHWAY 97



Russell Huntamer, CCIM | Jay Lyons, SIOR, CCIM
Eli Harrison, Broker

600 SW Columbia St., Ste. 6100 | Bend, OR 97702

541.383.2444 | www.CompassCommercial.com

COMPASS
COMMERCIAL

REAL ESTATE
SERVICES

FOR LEASE

\$1.75-\$2.25/SF/MO. NNN

The Design Center Retail/Office Space

AVAILABLE SPACES

Suite 110: 2,000 SF - 7,160 SF

Lease Rate: \$1.75-\$2.25/SF/Mo.

CAMs: Est. at \$0.45/SF/Mo.

PROPERTY DETAILS

Bldg. Size: 39,464 SF

Lot Size: 1.93 Acres

Year Built: 2008

Zoning: Strip Service Commerical (C1)

Onsite 64 spaces in front

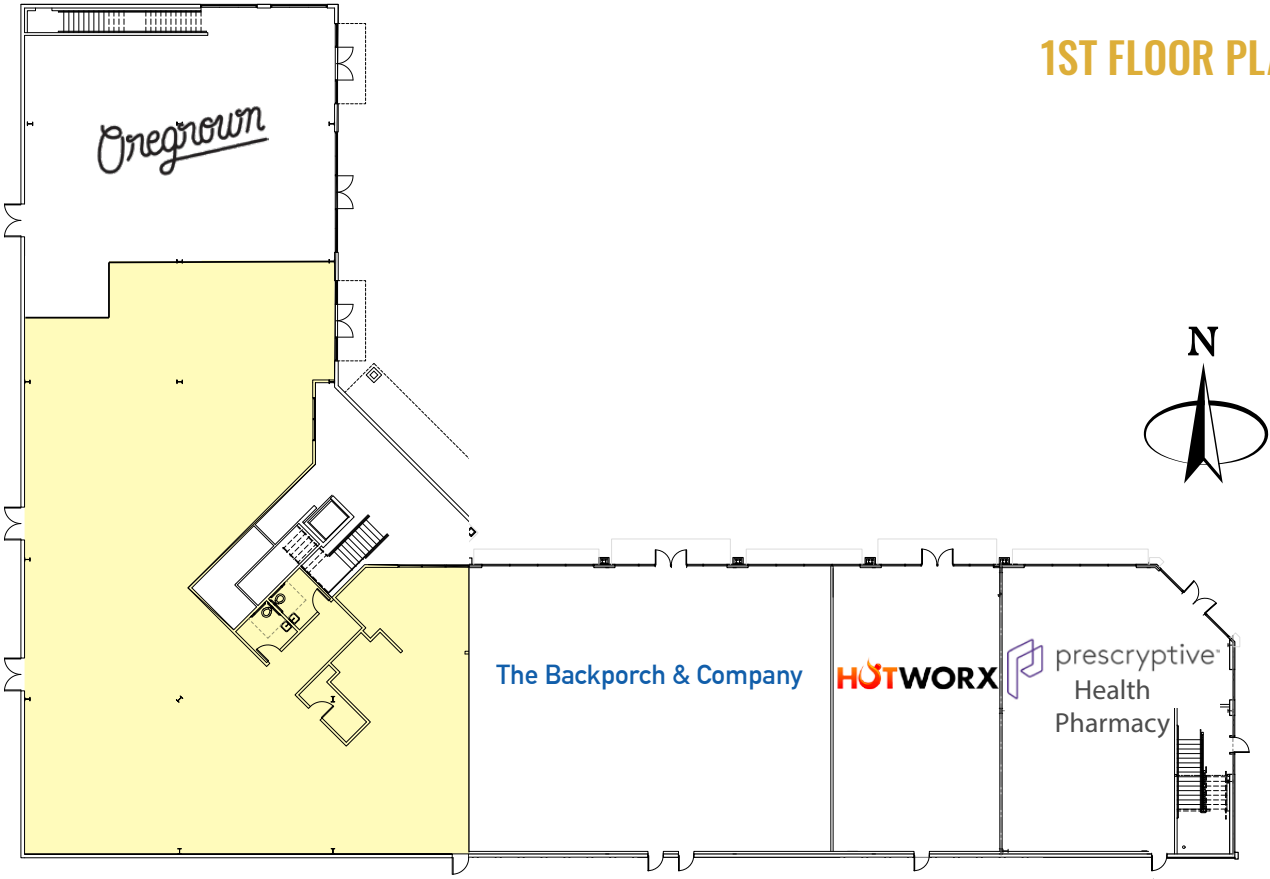
Parking: 30 spaces in rear

HIGHLIGHTS

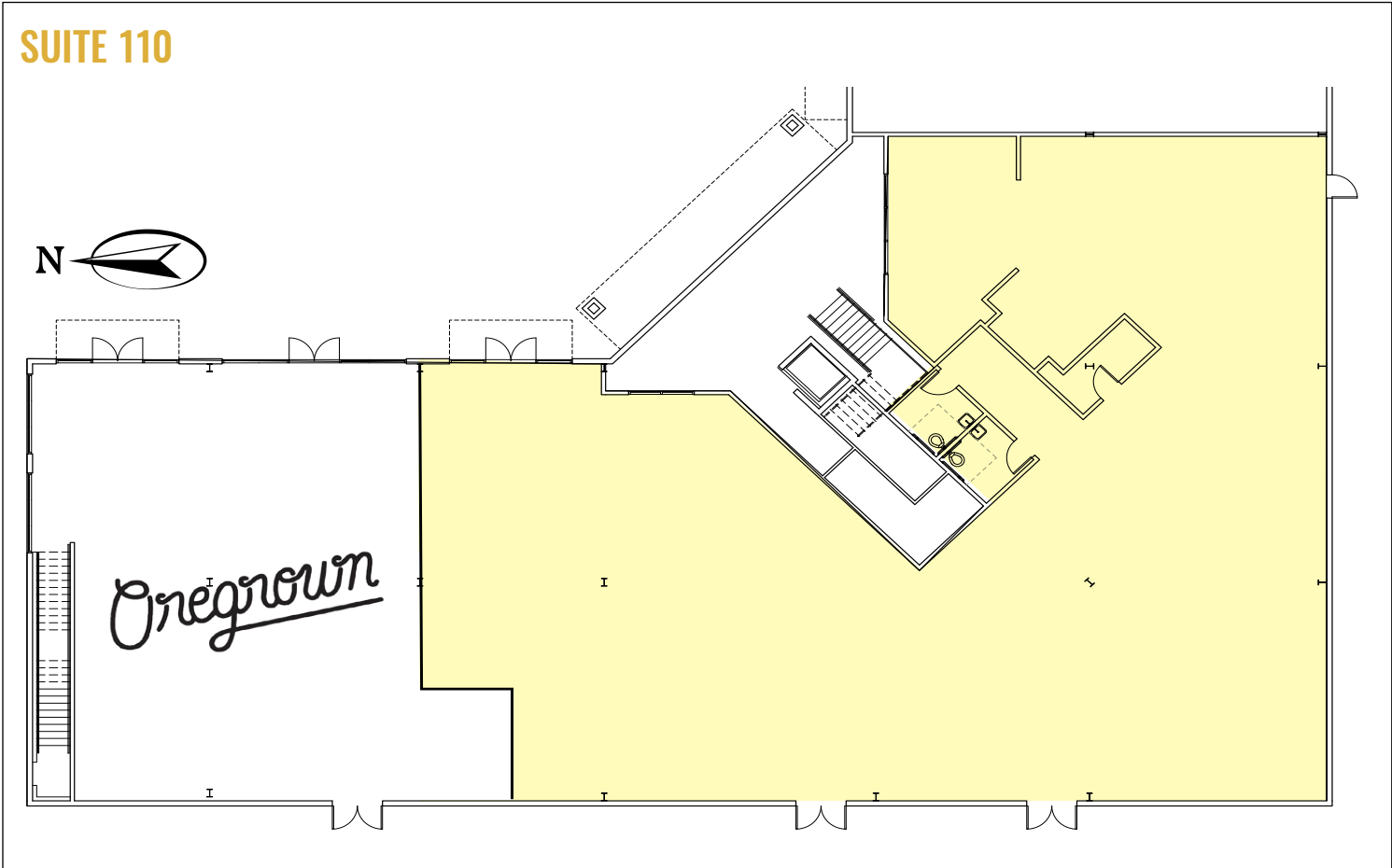
- Class A retail/office/medical building
- Excellent access and exposure on Highway 97
- Monument and facade signage
- Great retail and office mixed-use synergy
- Traffic counts exceeding 33,600 (2023 ODOT)
- Other tenants in building include Prescriptive Health and Pharmacy, The Backporch and Company, Blue Sky Family Dentistry, Best Care Administrative Offices, Oregrown, and Hotworx



1ST FLOOR PLAN

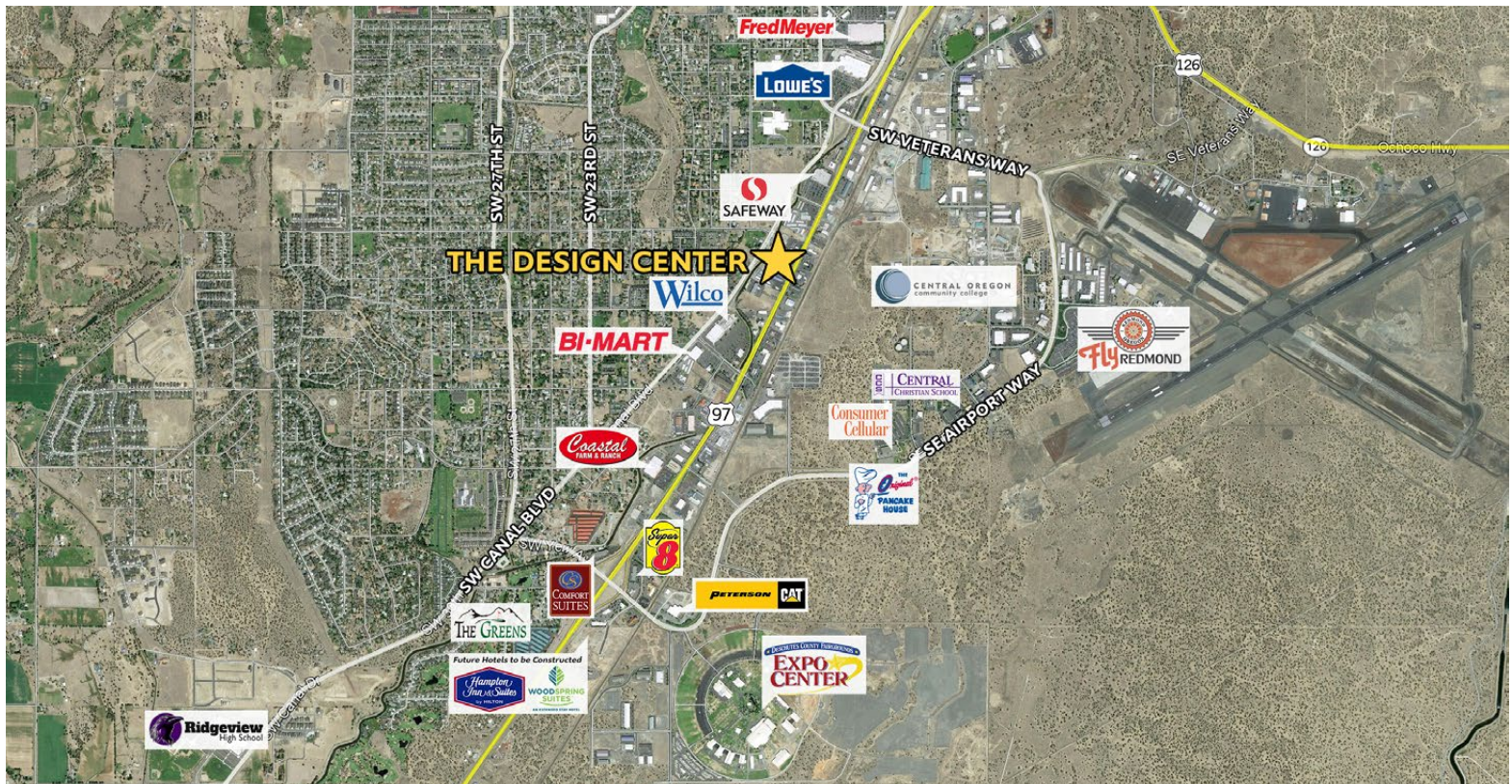


SUITE 110



FOR LEASE

The Design Center | 2127 S Hwy 97, Redmond, OR 97756



Brokers are licensed in the state of Oregon. This information has been furnished from sources we deem reliable, but for which we assume no liability. This is an exclusive listing. The information contained herein is given in confidence with the understanding that all negotiations pertaining to this property be handled through Compass Commercial Real Estate Services. All measurements are approximate.



Russell Huntamer, CCIM
Partner, Principal Broker
Cell 541.419.2634
rh@compasscommercial.com



Jay Lyons, SIOR, CCIM
Partner, Principal Broker
Cell 541.410.6519
jlyons@compasscommercial.com



Eli Harrison
Broker
Cell 541.977.2890
eharrison@compasscommercial.com

COMPASS
COMMERCIAL
REAL ESTATE
SERVICES