

**FOR**  
Sale

**HIGH**  
EXPOSURE

# Solano Business Park

Corner of Courage Drive & North Watney Way

**FAIRFIELD**  
CALIFORNIA

NORTH

**SITE**

**SITE**  
**FEATURES**

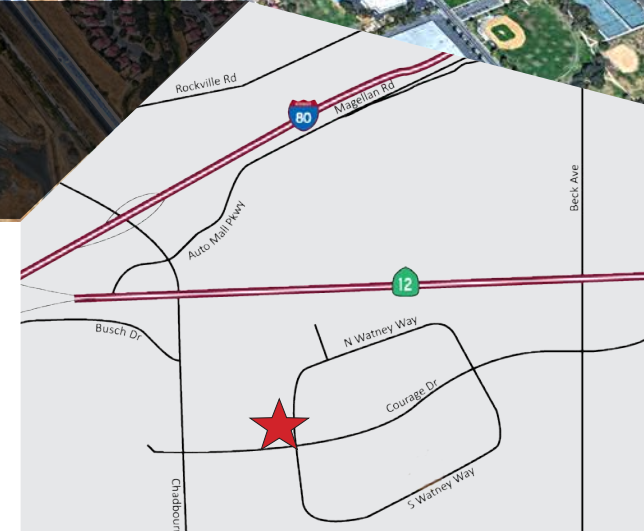
±3.0 Acres  
APN: 0028-761-050  
Zoning: Com. / Light Industrial (LI) City of Fairfield  
Utilities to site, along Courage Drive and N. Watney Way  
Ready to Build Site

**COMMENTS** *This high exposure land parcel is located at the entrance of the prestigious Solano Business Park in Fairfield.*

**NEWMARK**

**FOR MORE**  
**INFORMATION**  
**PLEASE CONTACT**

Graden Travis | 925.974.0104  
graden.travis@nrmk.com  
CA Re Lic. # 00871716





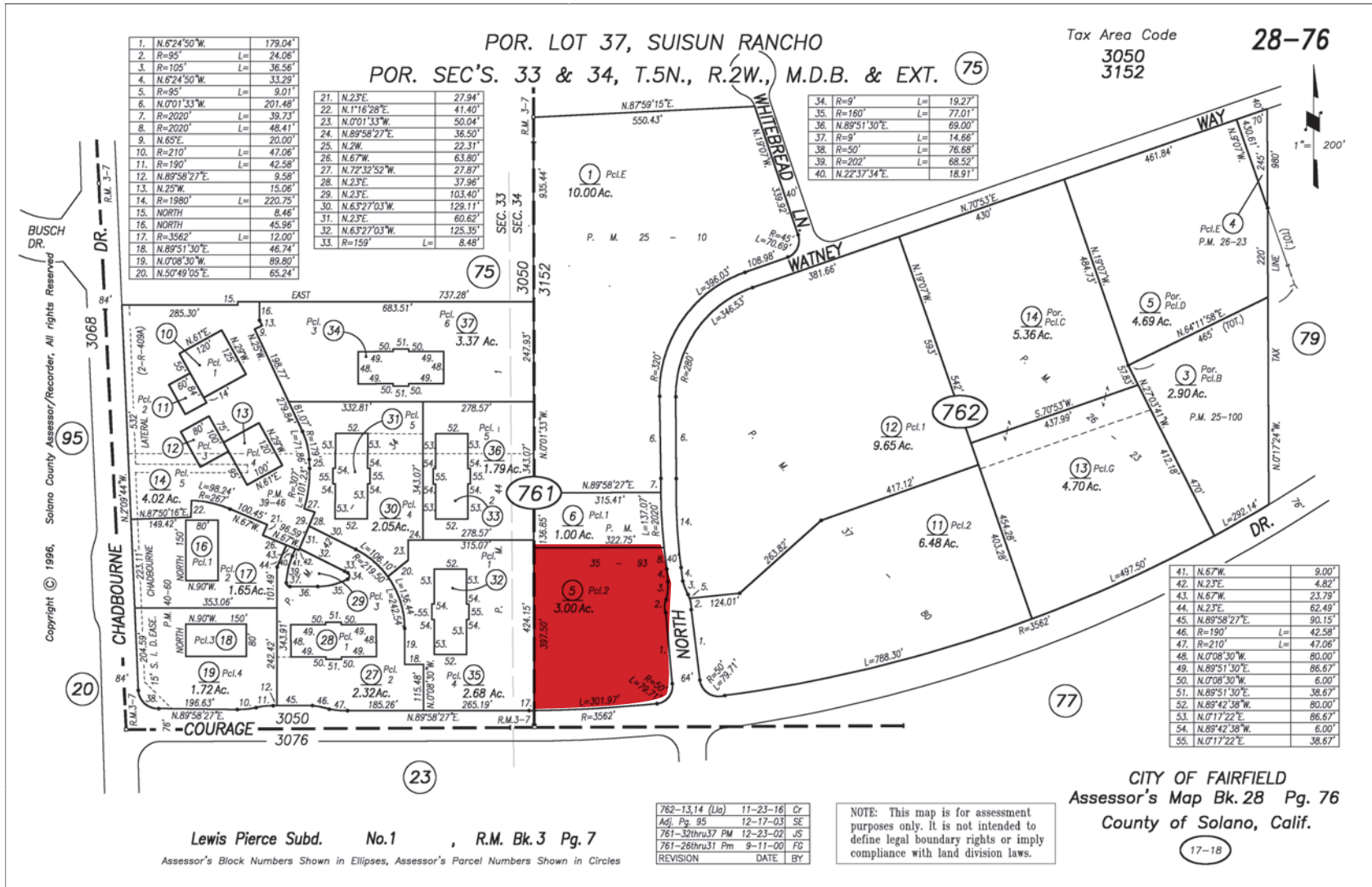
# FOR Sale

## HIGH EXPOSURE

# Solano Business Park

Corner of Courage Drive & North Watney Way

## FAIRFIELD CALIFORNIA



# NEWMARK

**FOR MORE  
INFORMATION  
PLEASE CONTACT**

**Graden Travis | 925.974.0104**  
**graden.travis@nrmk.com**  
**CA Re Lic. # 00871716**

The distributor of this communication is performing acts for which a real estate license is required. The information contained herein has been obtained from sources deemed reliable but has not been verified and no guarantee, warranty or representation, either express or implied, is made with respect to such information. Terms of sale or lease and availability are subject to change or withdrawal without notice. 21-0798