

# FOR SALE

56.95 ACRES LAND - SHOP & HOUSE

**14140** | Salem Church Rd.  
KING GEORGE, VA 22485



## SPECIFICATIONS

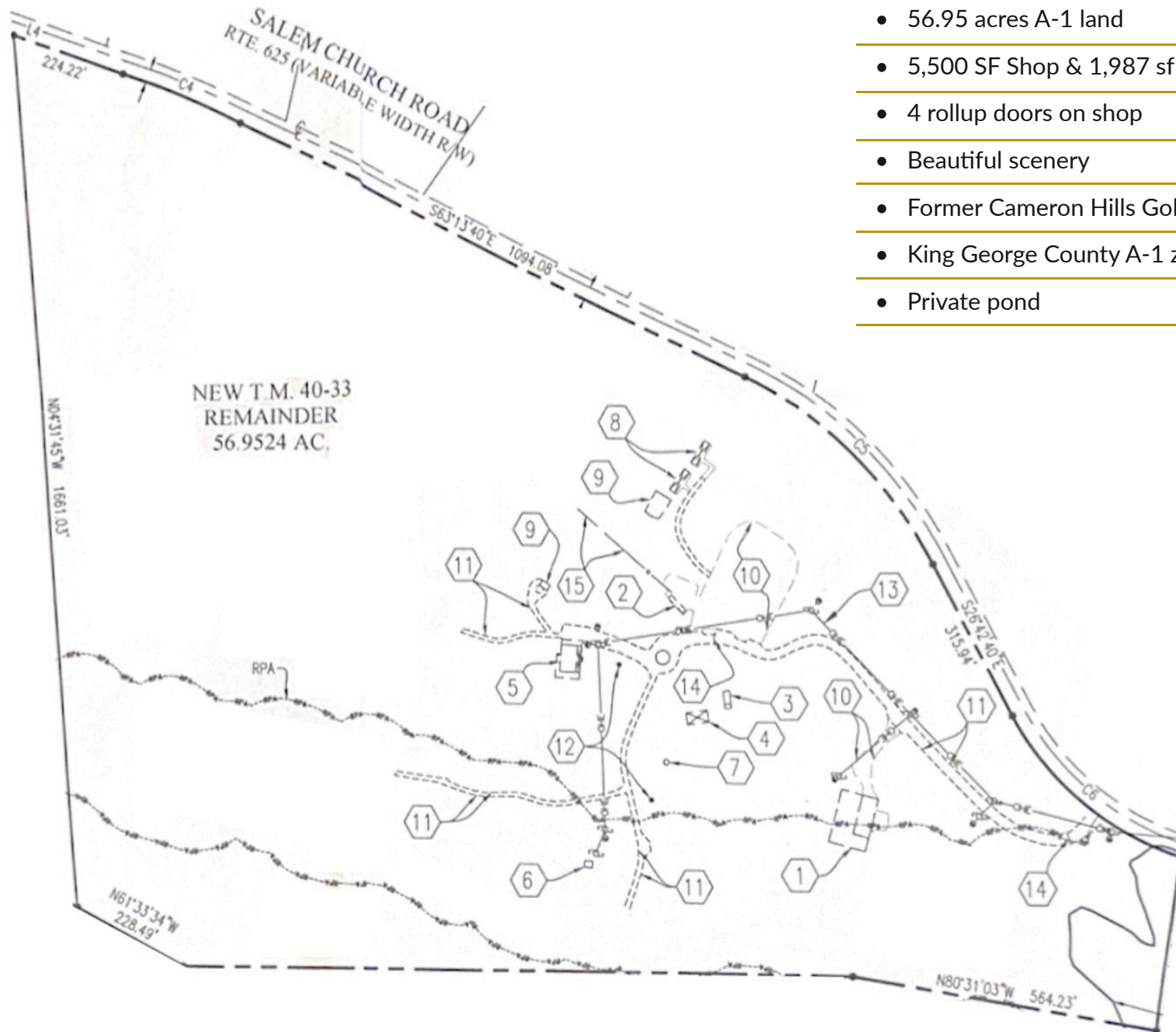
|            |                                 |
|------------|---------------------------------|
| Size:      | 56.95 Acres                     |
| Pricing:   | \$750,000                       |
| Zoning:    | A-1                             |
| Buildings: | 5,500 SF Shop<br>1,987 SF House |



# PLAT MAP



J R A



- 56.95 acres A-1 land
- 5,500 SF Shop & 1,987 sf house
- 4 rollup doors on shop
- Beautiful scenery
- Former Cameron Hills Golf Course
- King George County A-1 zoning
- Private pond

# PARCEL VIEW



J R A





# HOUSE PHOTOS



J R A





# LAND PHOTOS



J R A





# SHOP PHOTOS



J R A

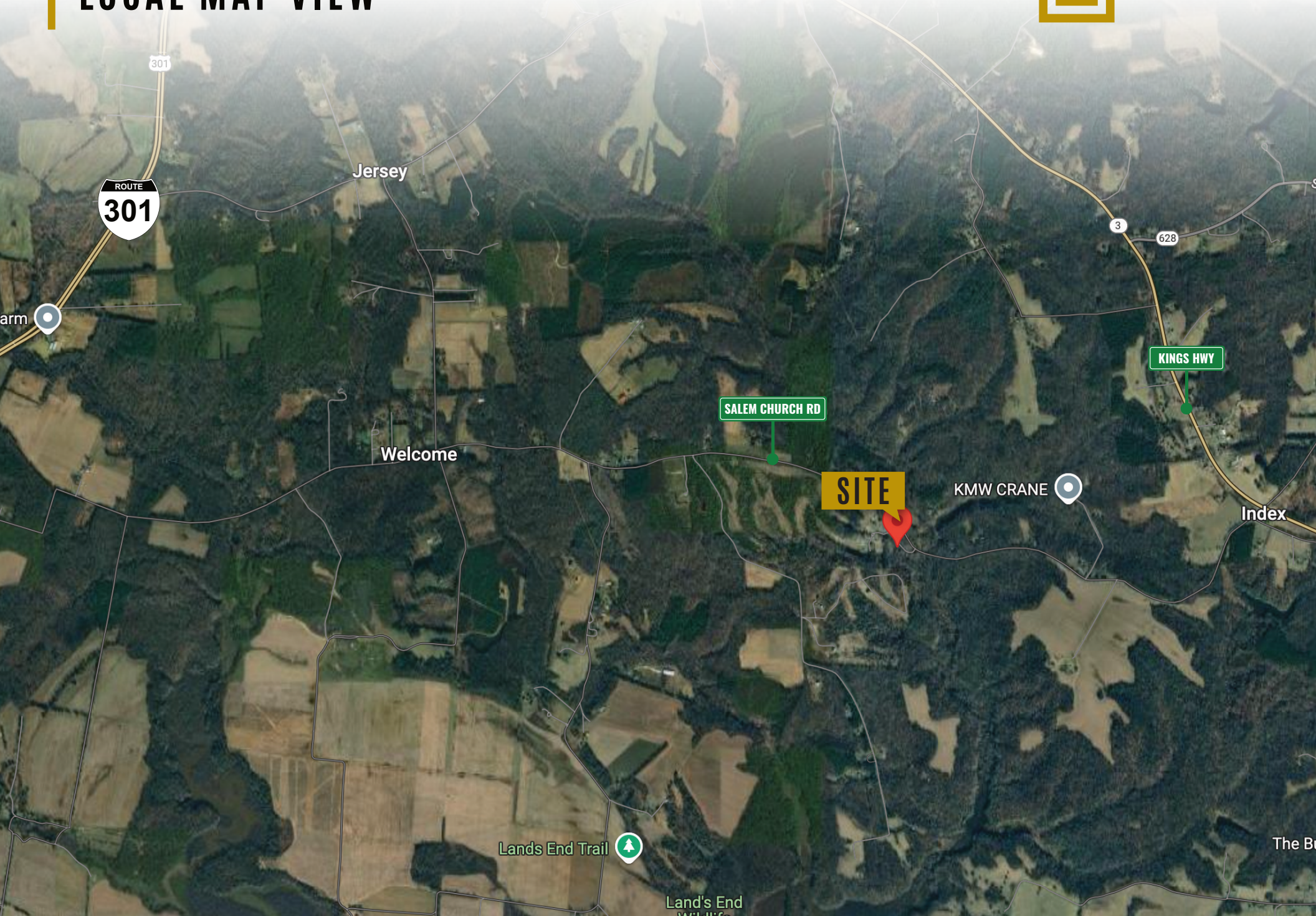




# LOCAL MAP VIEW



J R A



ROUTE  
**301**

Jersey

Welcome

SALEM CHURCH RD

**SITE**

KMW CRANE

KINGS HWY

Index

Lands End Trail

Land's End



FOR MORE INFORMATION PLEASE CONTACT:



**Heather Hagerman**

📞 540-429-2429 (Cell)

📞 540-372-7675 (Office )

✉ hagerman@johnsonrealtyadvisors.com



**Fitzhugh Johnson III**

📞 540-623-4565 (Cell)

📞 540-372-7675 (Office )

✉ fjohnson3@johnsonrealtyadvisors.com



**Andrew Hall**

📞 540-656-3515 (Cell)

📞 540-372-7675 (Office )

✉ Andrew@johnsonrealtyadvisors.com



JOHNSON

REALTY

ADVISORS

All information contained herein was made based upon information furnished to us by the owner or from sources we believe are reliable. While we do not doubt its accuracy, we have not verified it and we do not make any guarantee, warranty or representation about it. The property offered is subject to prior sale, lease, change of price or withdrawal from the market without notice.