

1440 – 1446 MICHIGAN AVE.  
DETROIT, MICHIGAN

RETAIL FOR LEASE  
2,450 Square Feet Available



**SIGNATURE  
ASSOCIATES**  
KNOW SIGNATURE | KNOW RESULTS

**HEART OF CORKTOWN**



## PROPERTY FEATURES

- 2,450 square feet available
- Excellent basement unit in the heart of Corktown
- Recently updated
- Infrastructure in place for speakeasy-style bar
- Contact Broker for Lease Rate



For more information, please contact:

**JOE STACK**  
(248) 359 0615  
jstack@signatureassociates.com

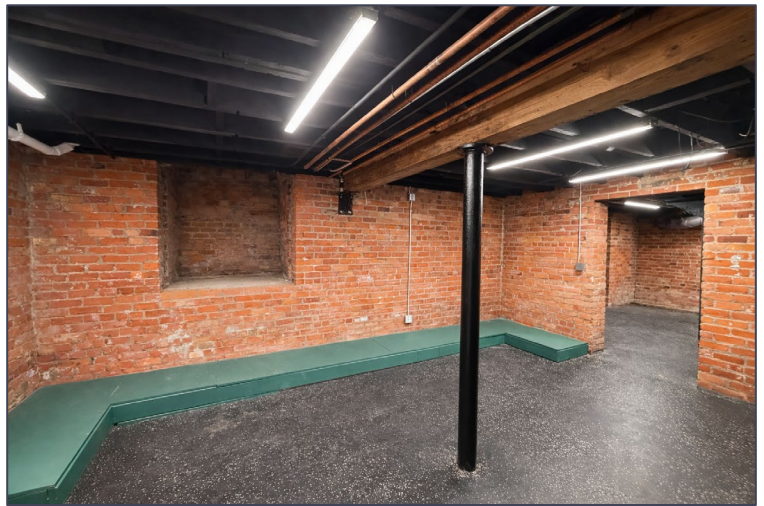
**SIGNATURE ASSOCIATES**  
One Towne Square, Suite 1200  
Southfield, MI 48076  
www.signatureassociates.com



# 1440 – 1446 Michigan Avenue – Detroit, Michigan

Retail For Lease

2,450  
Square Feet  
AVAILABLE



For more information, please contact:

**JOE STACK**  
(248) 359 0615  
jstack@signatureassociates.com

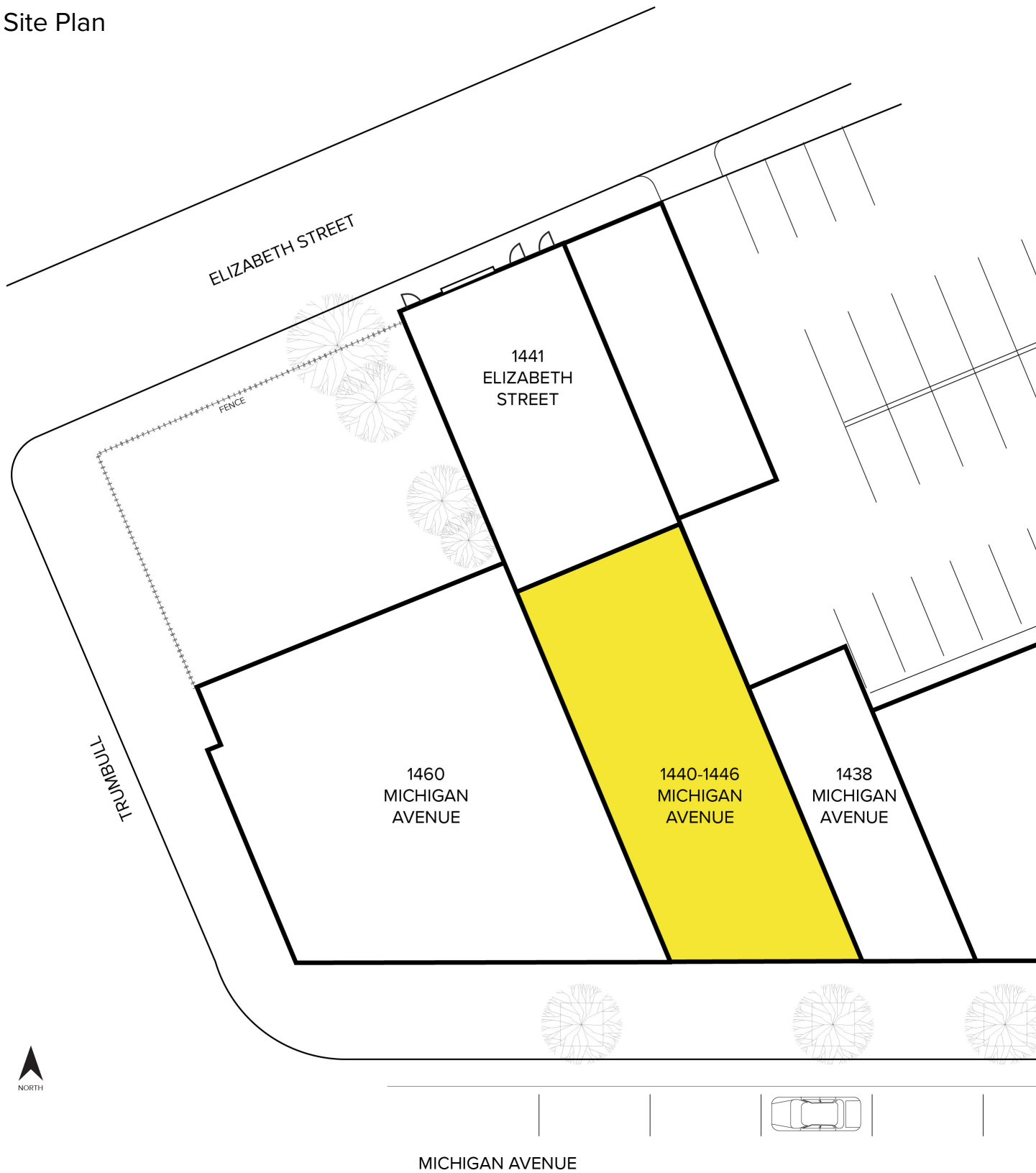
**SIGNATURE ASSOCIATES**  
One Towne Square, Suite 1200  
Southfield, MI 48076  
www.signatureassociates.com

# 1440 – 1446 Michigan Avenue – Detroit, Michigan

Retail For Lease

2,450  
Square Feet  
AVAILABLE

## Site Plan



For more information, please contact:

**JOE STACK**  
(248) 359 0615  
jstack@signatureassociates.com

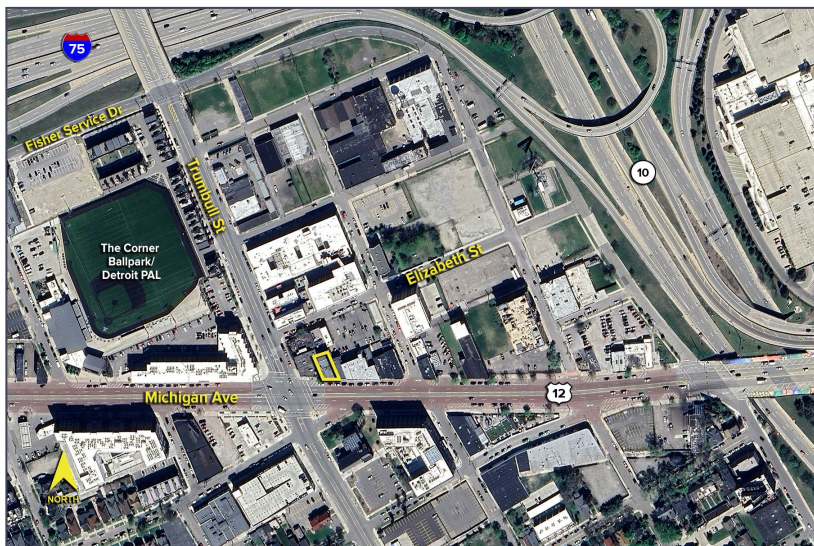
**SIGNATURE ASSOCIATES**  
One Towne Square, Suite 1200  
Southfield, MI 48076  
www.signatureassociates.com



# 1440 – 1446 Michigan Avenue – Detroit, Michigan

## Retail For Lease

2,450  
Square Feet  
AVAILABLE



### DEMOGRAPHICS

	POPULATION	MED. HH INCOME
1 MILE	14,598	\$55,663
3 MILE	90,916	\$48,418
5 MILE	237,560	\$44,811

### TRAFFIC COUNTS (TWO-WAY)

11,235	Michigan Ave. E of Trumbull St.
12,288	Michigan Ave. W of Trumbull St.
7,363	Trumbull St. N of Michigan Ave.
4,980	Trumbull St. S of Michigan Ave.



For more information, please contact:

**JOE STACK**  
(248) 359 0615  
jstack@signatureassociates.com

**SIGNATURE ASSOCIATES**  
One Towne Square, Suite 1200  
Southfield, MI 48076  
www.signatureassociates.com