



MPT
MERRILL P.
THOMAS
Co., Inc
COMMERCIAL REAL ESTATE

FOR LEASE

5600 Commerce Blvd E, Mobile, AL

Move-in Ready! 49,000 SF Office/Showroom/Warehouse
Located in the Mobile Commerce Park off of Rangeline Rd!



John M Delchamps
 Associate Broker
 John@mptco.com
 Cell: 251-604-0615
 Off: 251-476-0808

3662 Dauphin Street
 Suite E
 Mobile, AL 36608
MPTCO.COM

The information given herewith is obtained from sources the agent considers reliable, however, agent is not responsible for misstatements of facts, errors, or omissions. Purchaser must satisfy self of accuracy of any statement or projection. All figures are approximate.

Property Description

**49,000 SF Office/Showroom/Warehouse,
 Move-in Ready!**

Optimal Characteristics:

- * 14,420 +/- SF office space (2 floors)
- * 34,580 SF of warehouse space of which +- 3,000 SF is air conditioned
- * Eight restrooms, 2 in warehouse and 6 in office area (2 upstairs and 4 downstairs)
- * One (1) 10'x10' ground level door and one (1) 10'x10' dock high door (well)
- * One interior roll-up door
- * 18' - 20' Eave Height
- * Large conference and breakroom/kitchen
- * Zoning B 5
- * Volts 480

At A Glance



Size - Total - 49,000 SF
 Office - 14,420 SF
 Warehouse - 34,580 SF



Lease - \$7.50 PSF
 + Taxes & Insurance

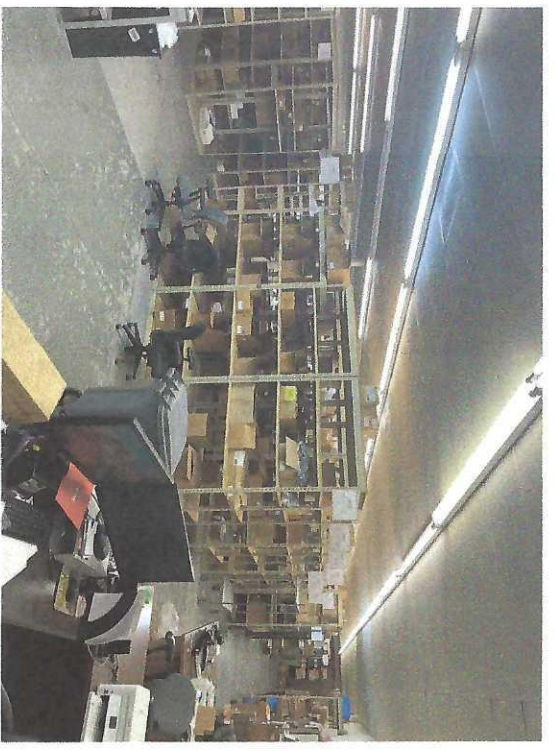
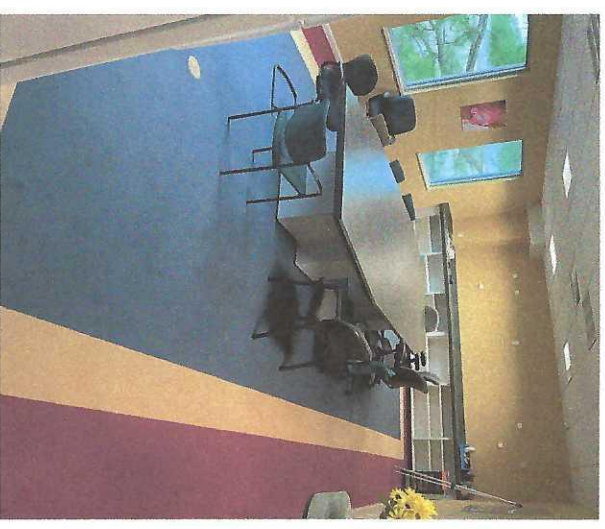
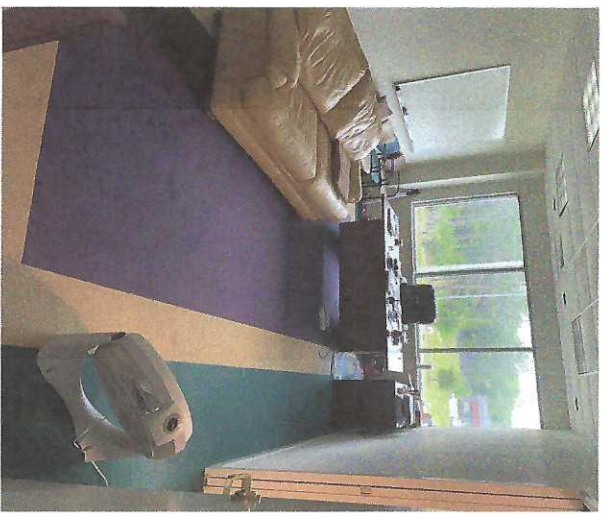


Parking - Private, Ample
 Off-Street Parking



Floor Plan - See Floor Plan
 on page 5

Interior



Exterior



Floor Plans

